



22 & 28 S. Wabash
CHICAGO, ILLINOIS

Sullivan Center Restaurant Spaces Available

West block of Wabash between
Madison and Monroe

**FOR MORE INFORMATION,
PLEASE CONTACT**

ANTHONY CAMPAGNI
ac@canvasrealestate.com
847.651.8669

ELAN RASANSKY
elan@canvasrealestate.com
414.380.1555

JOHN BASSI
jbassi@canvasrealestate.com
708.822.4583



DEMOGRAPHICS



93.3k+
Total Population
1 Mile

14.9k+ 3.42k+
0.5 Miles 0.25 Miles



\$184k+
Average HH Income
1 Mile

\$202k+ \$250k+
0.5 Miles 0.25 Miles



524k+
Daytime Population
1 Mile

258k+ 62.2k+
0.5 Miles 0.25 Miles



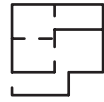
CHICAGO LOOP

- Second generation restaurant spaces
- The Sullivan Center, a one million square foot retail and office complex located in the heart of the Center Loop District in Downtown Chicago, is one of the city's iconic structures and home to a number of retail and global office users
- One block south of new CTA Washington/Wabash station, 10,000 riders daily
- One block west of Millennium Park, Chicago's most popular tourist attraction with 25 million visitors per year
- Surrounding neighbors include Vans, 32 South State - Jordan Store, Fairgrounds Craft Coffee and Tea, Nordstrom Rack, Target, Shake Shack, and Goddess and the Baker
- Surrounding hotels include Chicago Athletic Association and Palmer House a Hilton Hotel

CANVAS

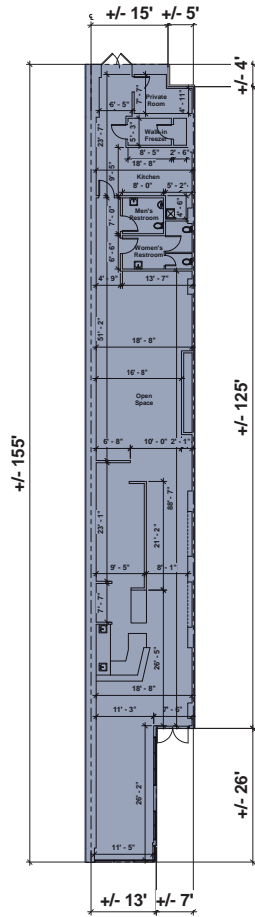
FLOOR PLAN

22 SOUTH WABASH AVENUE



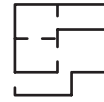
2,889 sqft

Ground Level



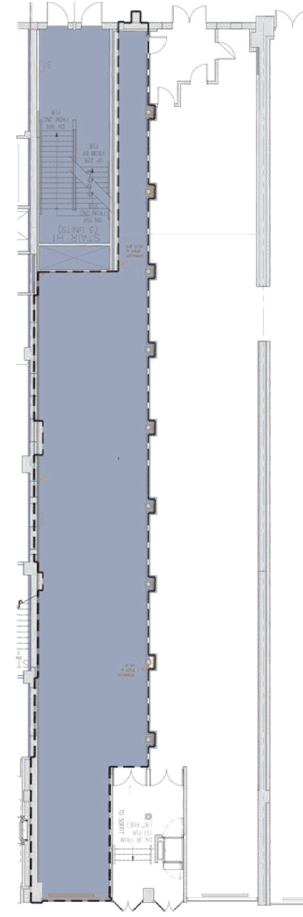
SOUTH WABASH AVENUE

28 SOUTH WABASH AVENUE



2,413 sqft

Ground Level

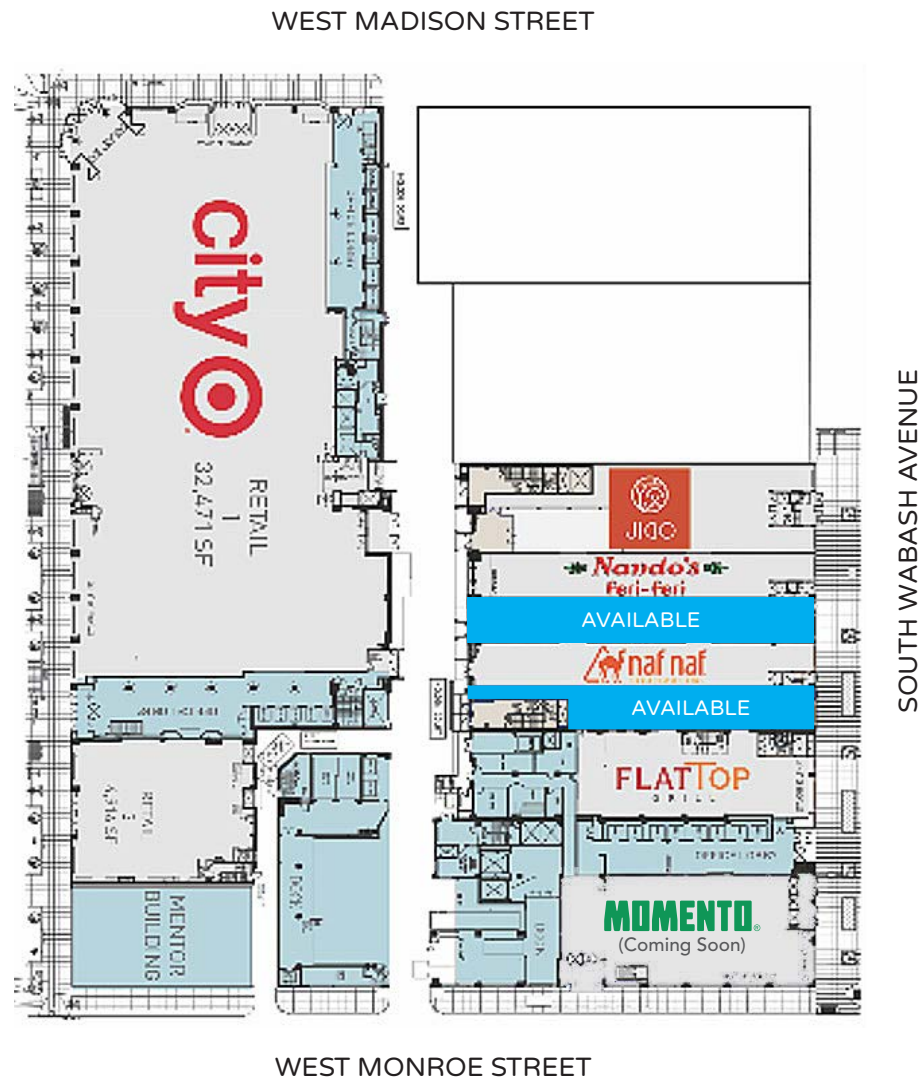


SOUTH WABASH AVENUE

CANVAS



SITE PLAN



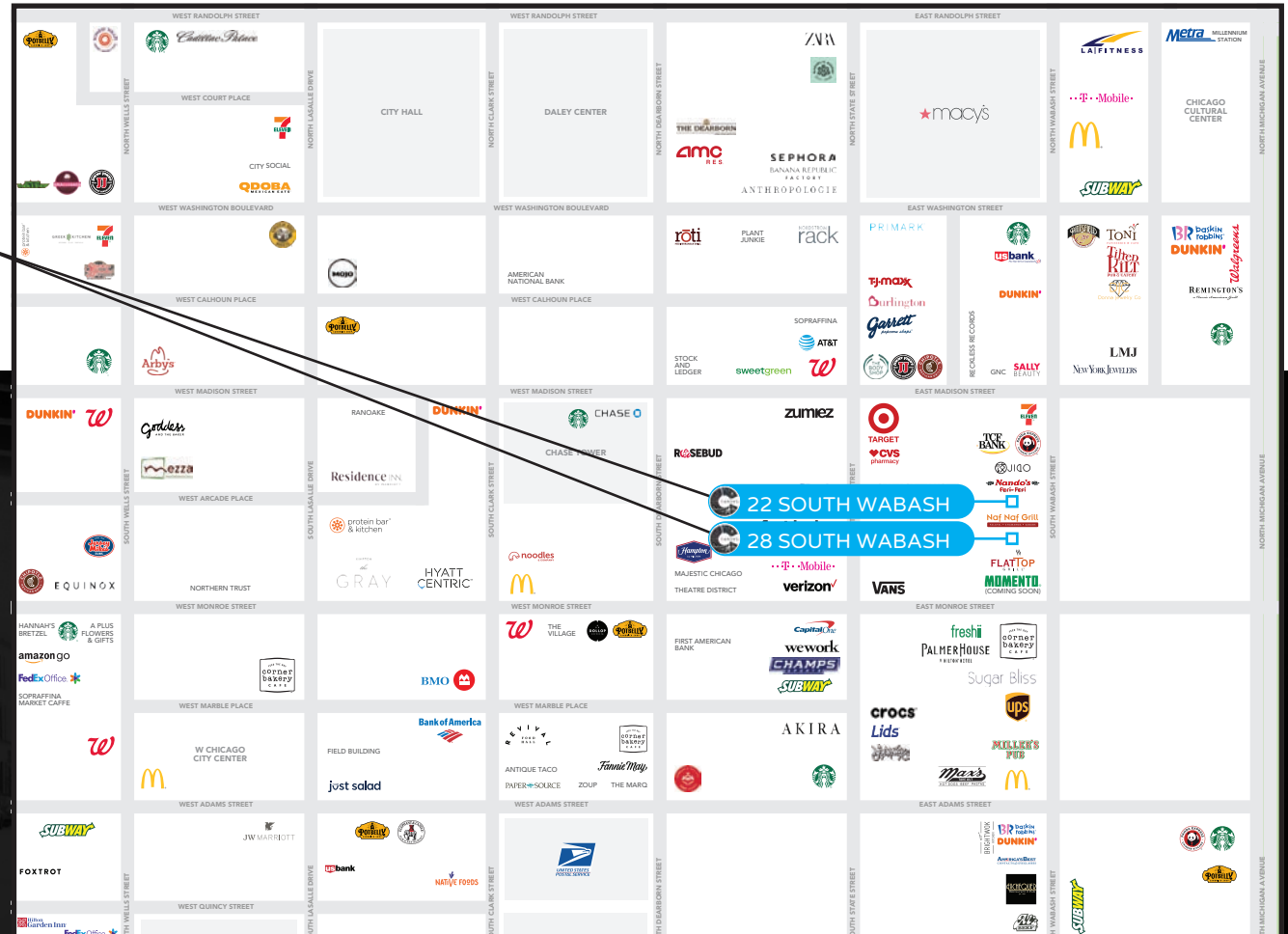
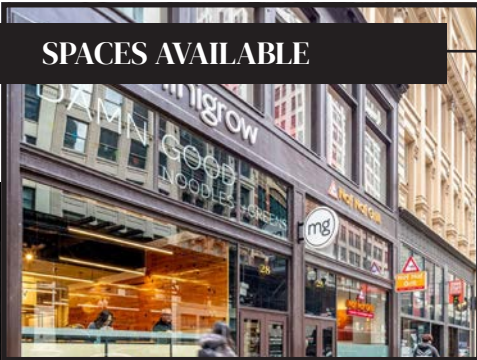
CANVAS



STREET MAP

22 & 28 S. Wabash
CHICAGO, ILLINOIS

SPACES AVAILABLE



FOR MORE INFORMATION,
PLEASE CONTACT

ANTHONY CAMPAGNI

ac@canvasrealestate.com

847.651.8669

ELAN RASANSKY

elan@canvasrealestate.com

414.380.1555

JOHN BASSI

jbassi@canvasrealestate.com

708.822.4583



CANVAS