



444 N. LaSalle Drive
CHICAGO, ILLINOIS

Retail Space Available

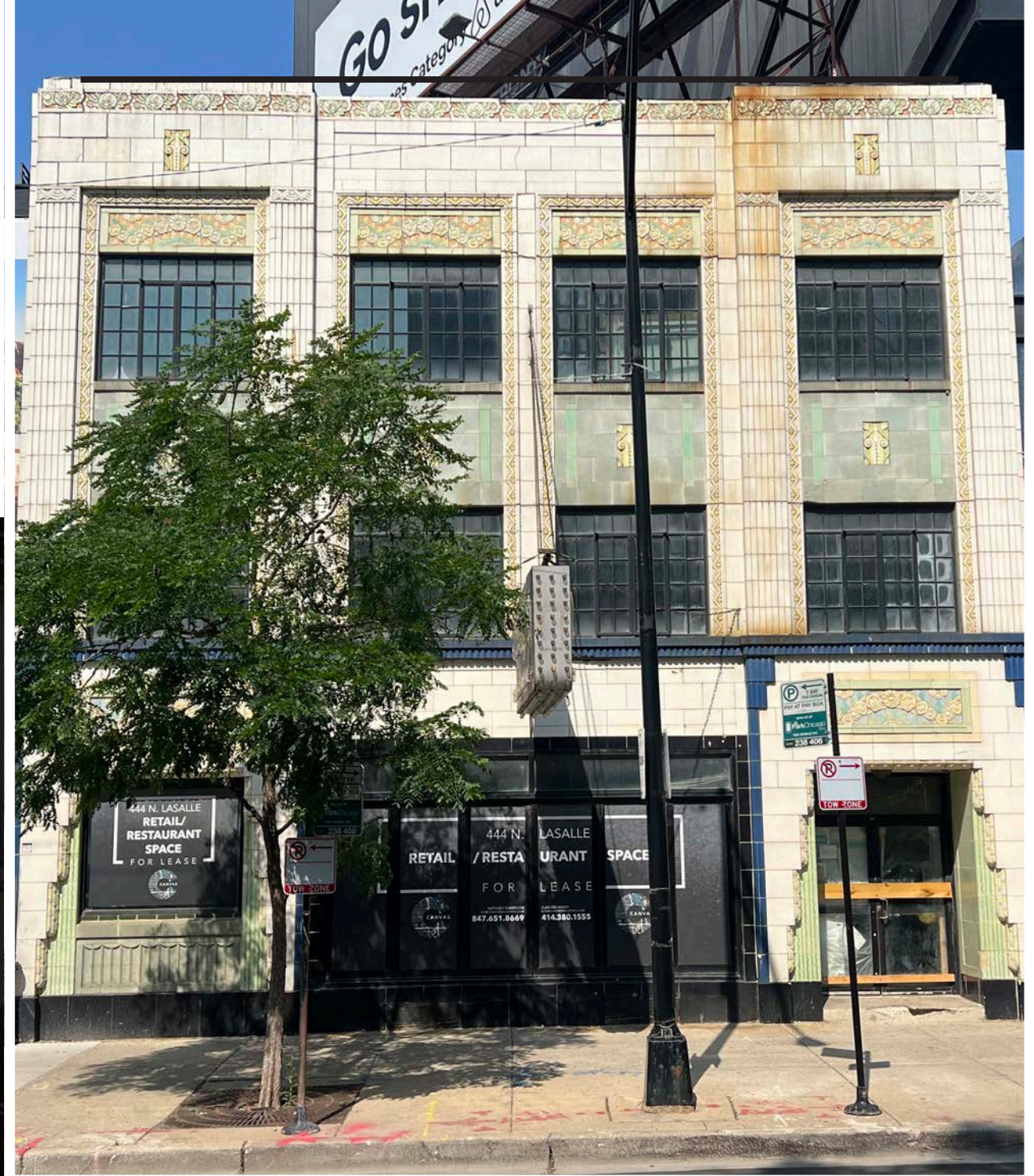
Southwest corner of
LaSalle & Illinois

**FOR MORE INFORMATION,
PLEASE CONTACT**

ANTHONY CAMPAGNI
ac@canvasrealestate.com
847.651.8669

ELAN RASANSKY
elan@canvasrealestate.com
414.380.1555

KATE WYANT
kwyant@canvasrealestate.com
630.730.5239



DEMOGRAPHICS



125k+

Total Population
1 Mile

34k+
0.5 Miles

8.3k+
0.25 Miles



\$183k+

Average HH Income
1 Mile

193k+
0.5 Miles

202k+
0.25 Miles

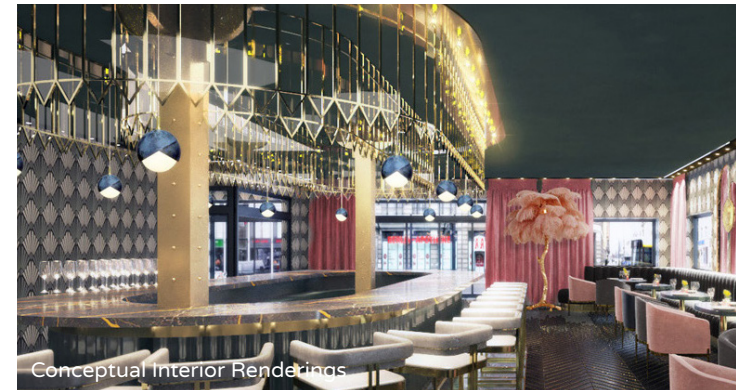


567k+

Daytime Population
1 Mile

159k+
0.5 Miles

31.2k+
0.25 Miles



Conceptual Interior Renderings



Conceptual Interior Renderings



Conceptual Interior Renderings

RIVER NORTH

- Single-tenant restaurant building in the heart of River North, with excellent exposure on LaSalle (20,000 VPD) along with considerable pedestrian traffic
- 2 blocks from CTA “L” train at Merchandise Mart (Purple, Brown Lines and 4 blocks from Clark & Lake (Blue, Green, Orange, Brown, Pink Lines)
- Neighborhood tenants include SUNDA, Joy District, Hubbard Inn, Foxtrot, Lou Malnati’s, Solita Tacos & Margaritas and The Hawksmoor (coming soon)

CANVAS

FLOOR PLANS

SPACE AVAILABLE

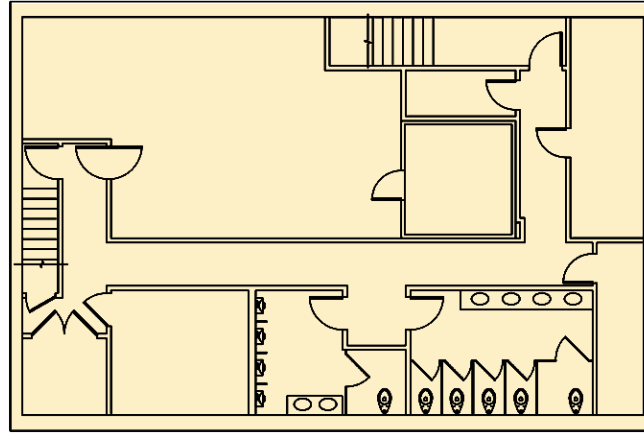
 **2,400 sqft**
Basement

 **2,400 sqft**
Ground Level

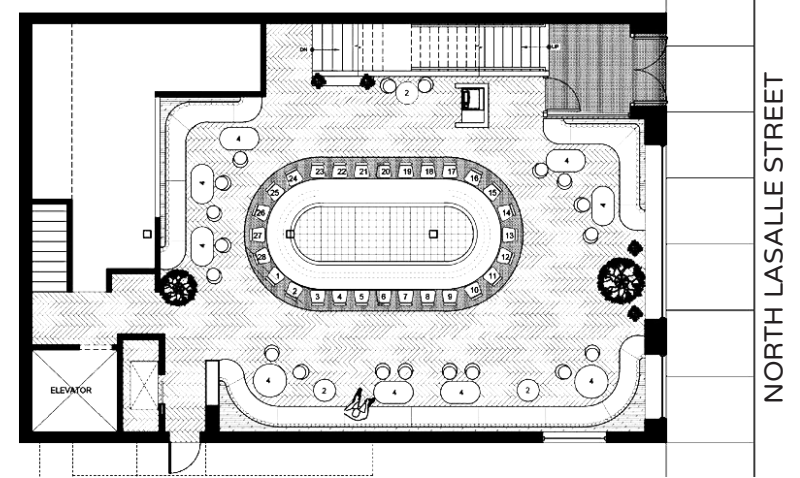
 **2,400 sqft**
Second Level

 **2,400 sqft**
Third Level

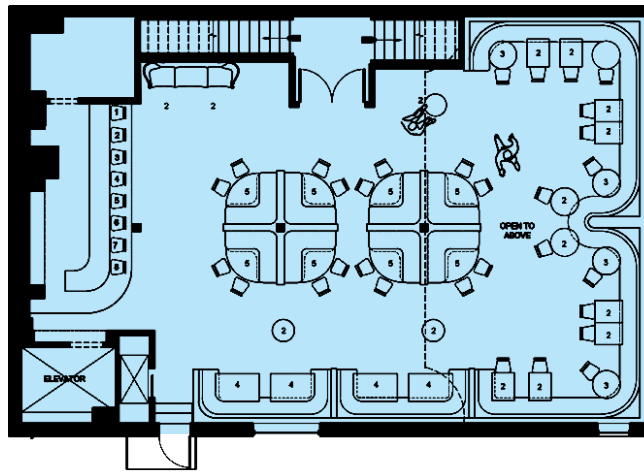
 **9,600 sqft**
Total



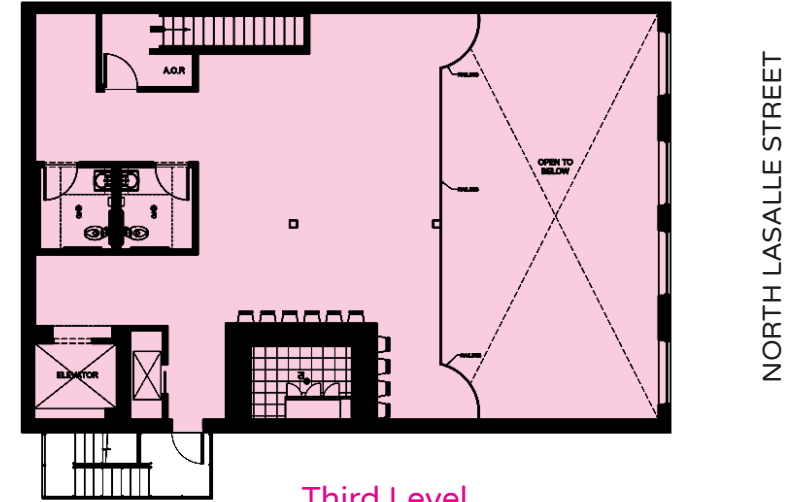
Basement



Ground Level



Second Level



Third Level

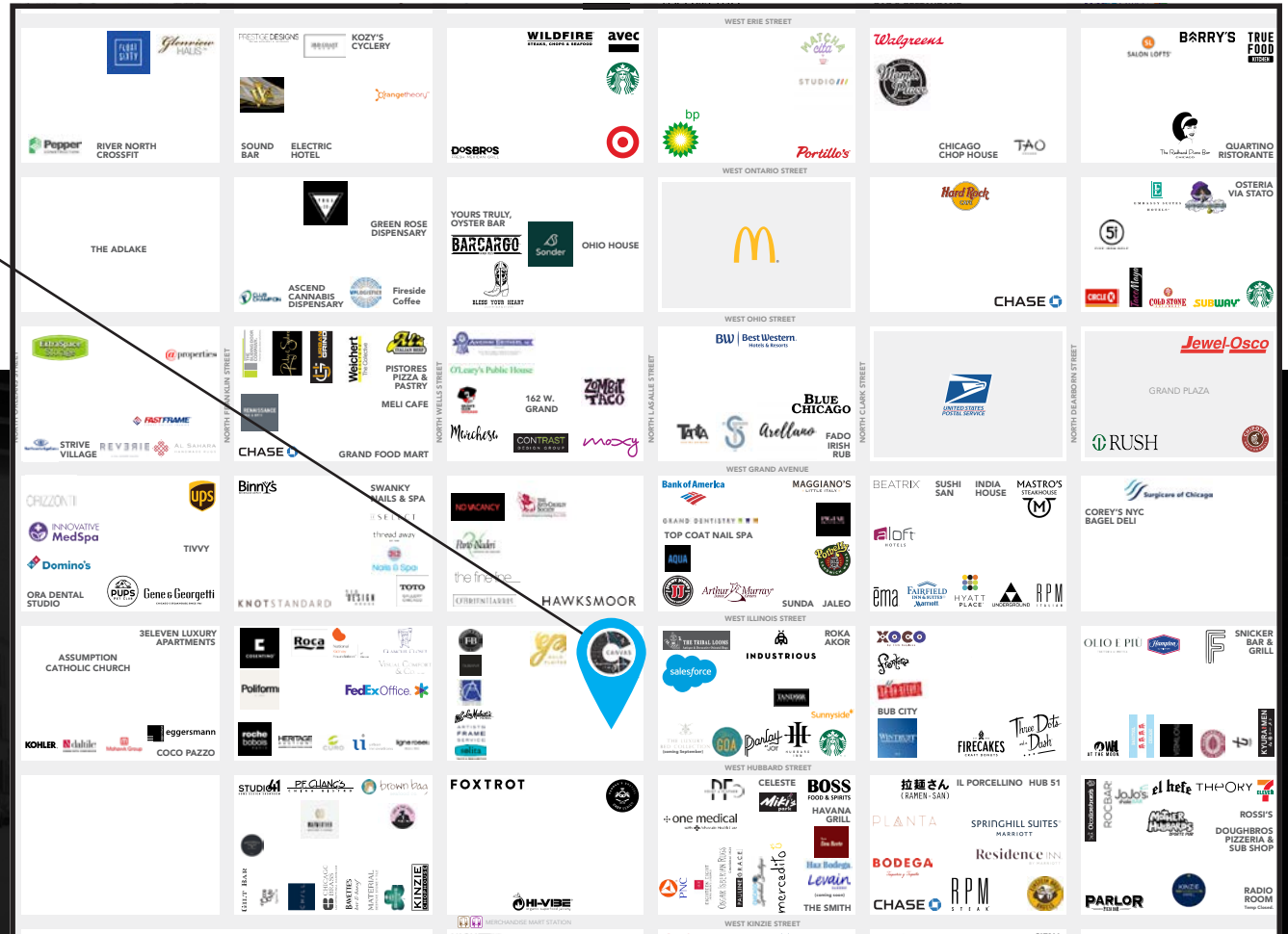
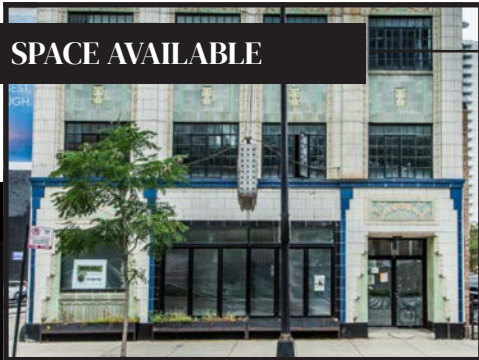
CANVAS



STREET MAP

444 N. LaSalle Drive
CHICAGO, ILLINOIS

SPACE AVAILABLE



FOR MORE INFORMATION,
PLEASE CONTACT

ANTHONY CAMPAGNI
ac@canvasrealestate.com
847.651.8669

ELAN RASANSKY
elan@canvasrealestate.com
414.380.1555

KATE WYANT
kwyant@canvasrealestate.com
630.730.5239



CANVAS