



5050 N. Broadway
CHICAGO, ILLINOIS

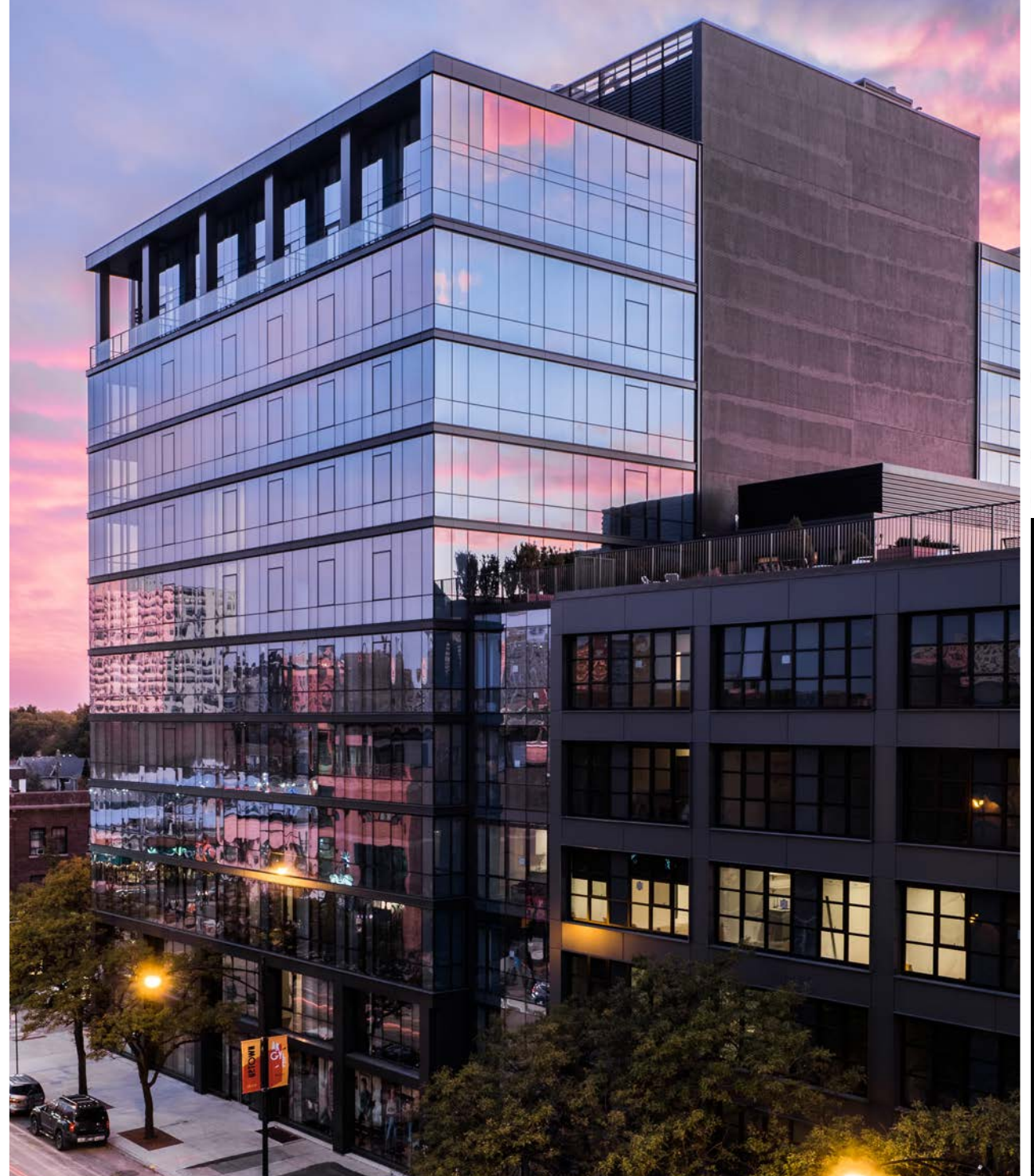
Retail Space for Lease

Northwest corner of
Winnemac and Broadway

**FOR MORE INFORMATION,
PLEASE CONTACT**

ANDREW BECKER
abecker@canvasrealestate.com
312.231.26009

KATE WYANT
kwyant@canvasrealestate.com
630.730.5239



DEMOGRAPHICS



79.4k+

Total Population
1 Mile

27.5k+ 5.87k+
0.5 Miles 0.25 Miles



\$107k+

Average HH Income
1 Mile

\$97.1k+ \$97.4k+
0.5 Miles 0.25 Miles



57.9k+

Daytime Population
1 Mile

19.1k+ 4.17k+
0.5 Miles 0.25 Miles



UPTOWN

- 5050 N. Broadway is located in between Lawrence and Foster in the heart of Chicago's Uptown neighborhood.
- Uptown is a highly sought after destination for entertainment and leisure with the Aragon Ballroom, Riviera Theatre, Montrose Beach and area retail.
- The location benefits from strong vehicular and pedestrian activity on Broadway.
- The project is one of the most substantial developments in the entire neighborhood with over 350 units.
- Substantial frontage and modern storefront design present a great retail opportunity.

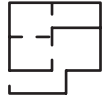
NEIGHBORING TENANTS

Swedish Medical Group, American Montessori Academy, Chipotle, Starbucks, Sun Wah BBQ, Tank Noodle, Fat Cat, Riviera Theatre, Aragon Ballroom, First Ascent Climbing & Fitness.

CANVAS

FLOOR PLAN

SPACE AVAILABLE



4,292 sqft

Retail A



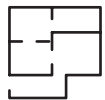
3,413 sqft

Retail B
(A+B can be combined)



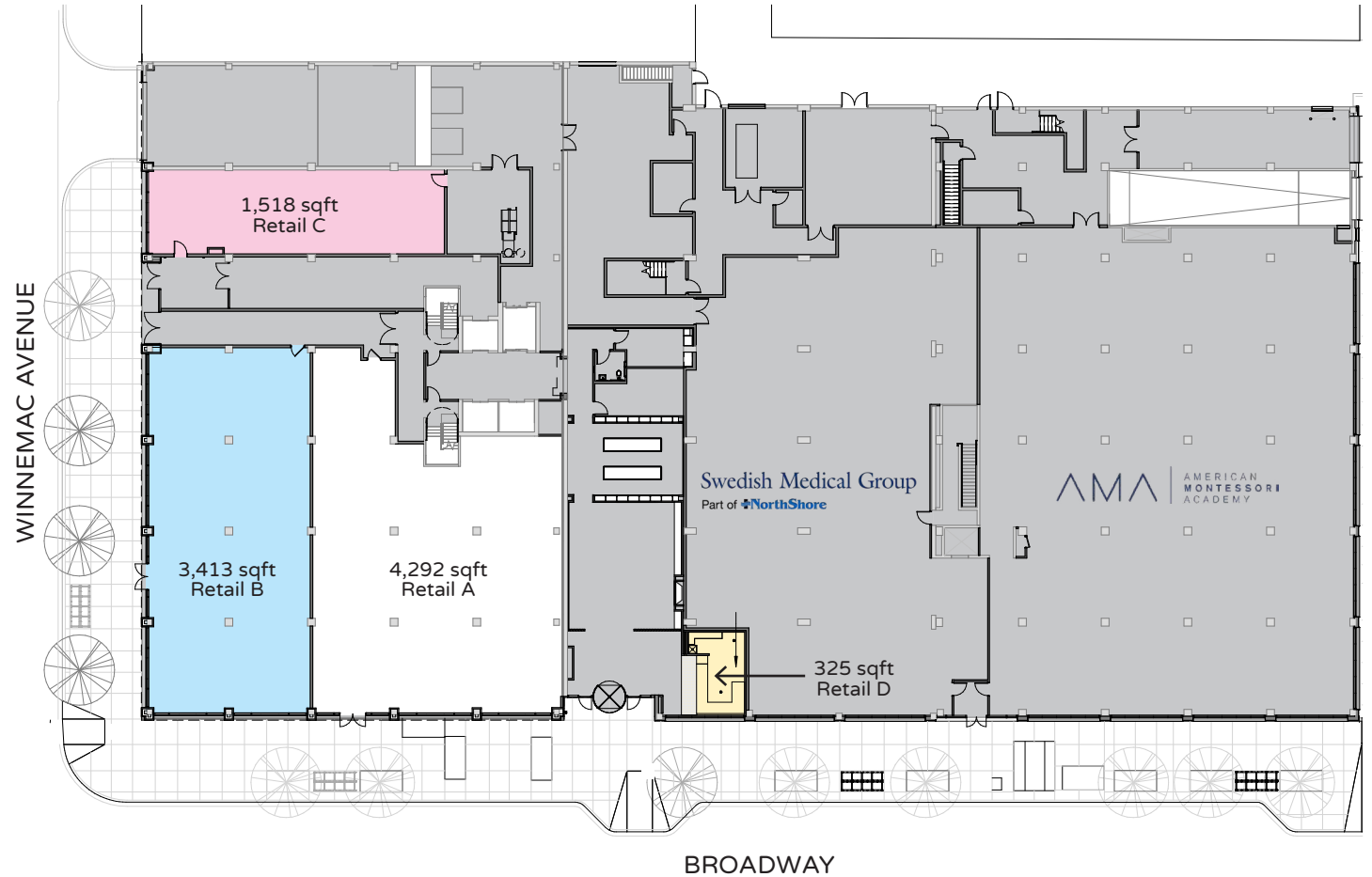
1,518 sqft

Retail C



325 sqft

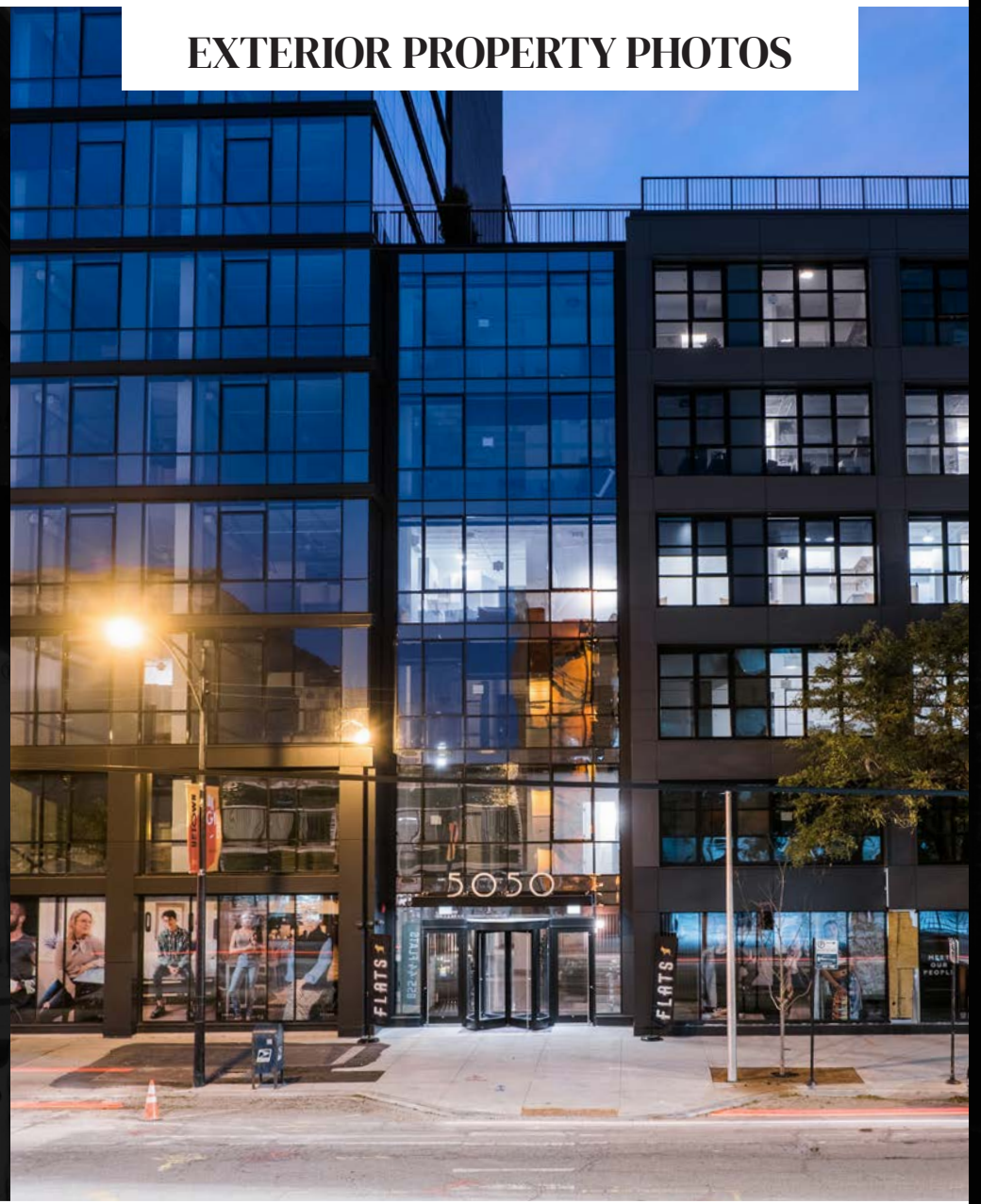
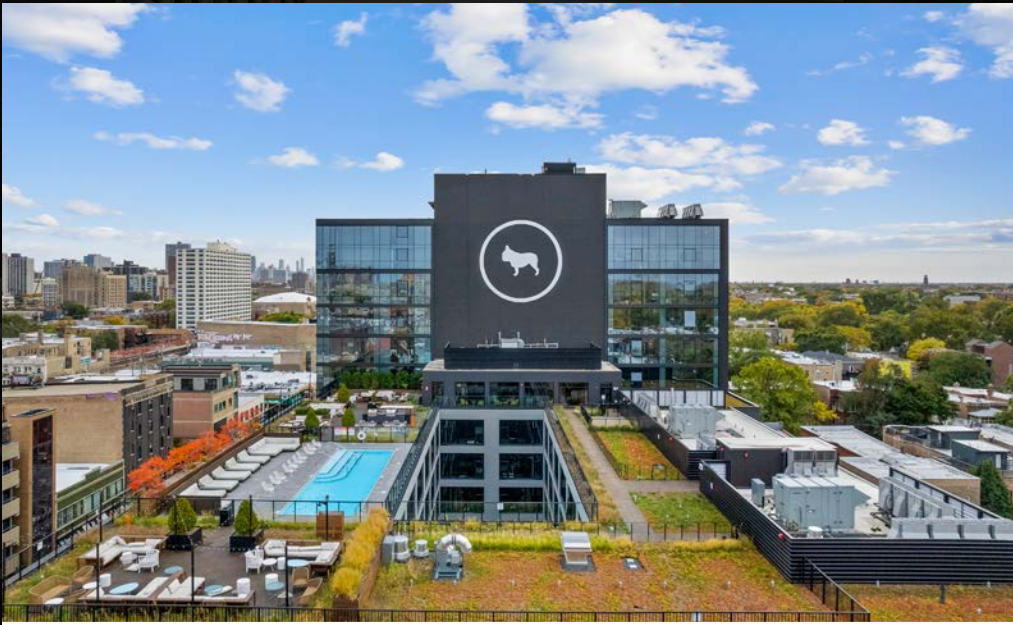
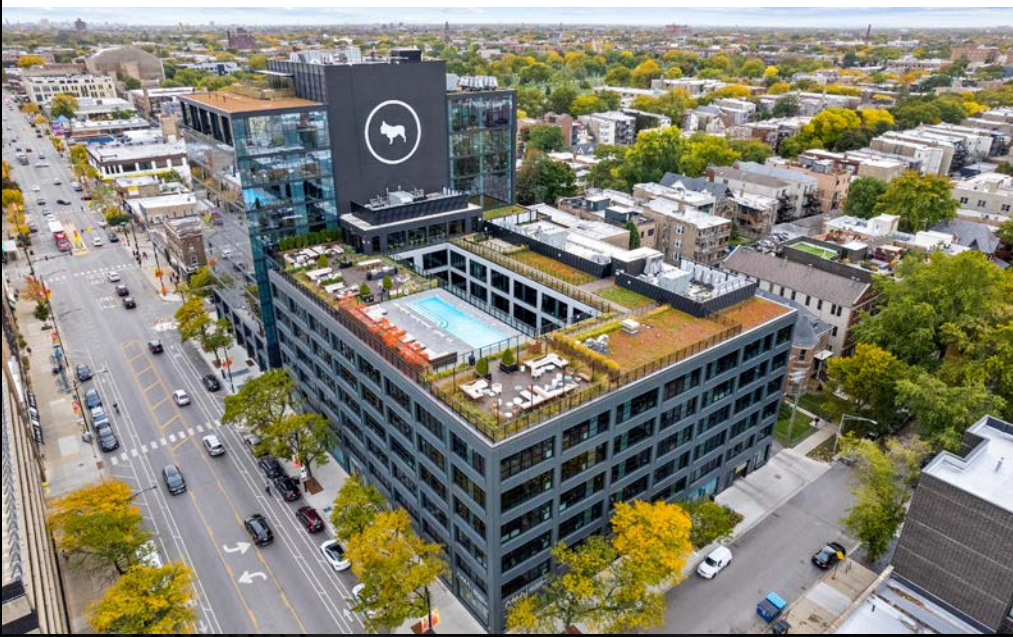
Retail D
("Build-out ready,
MEP run and ready
for connection,
Direct lobby access)



CANVAS



EXTERIOR PROPERTY PHOTOS

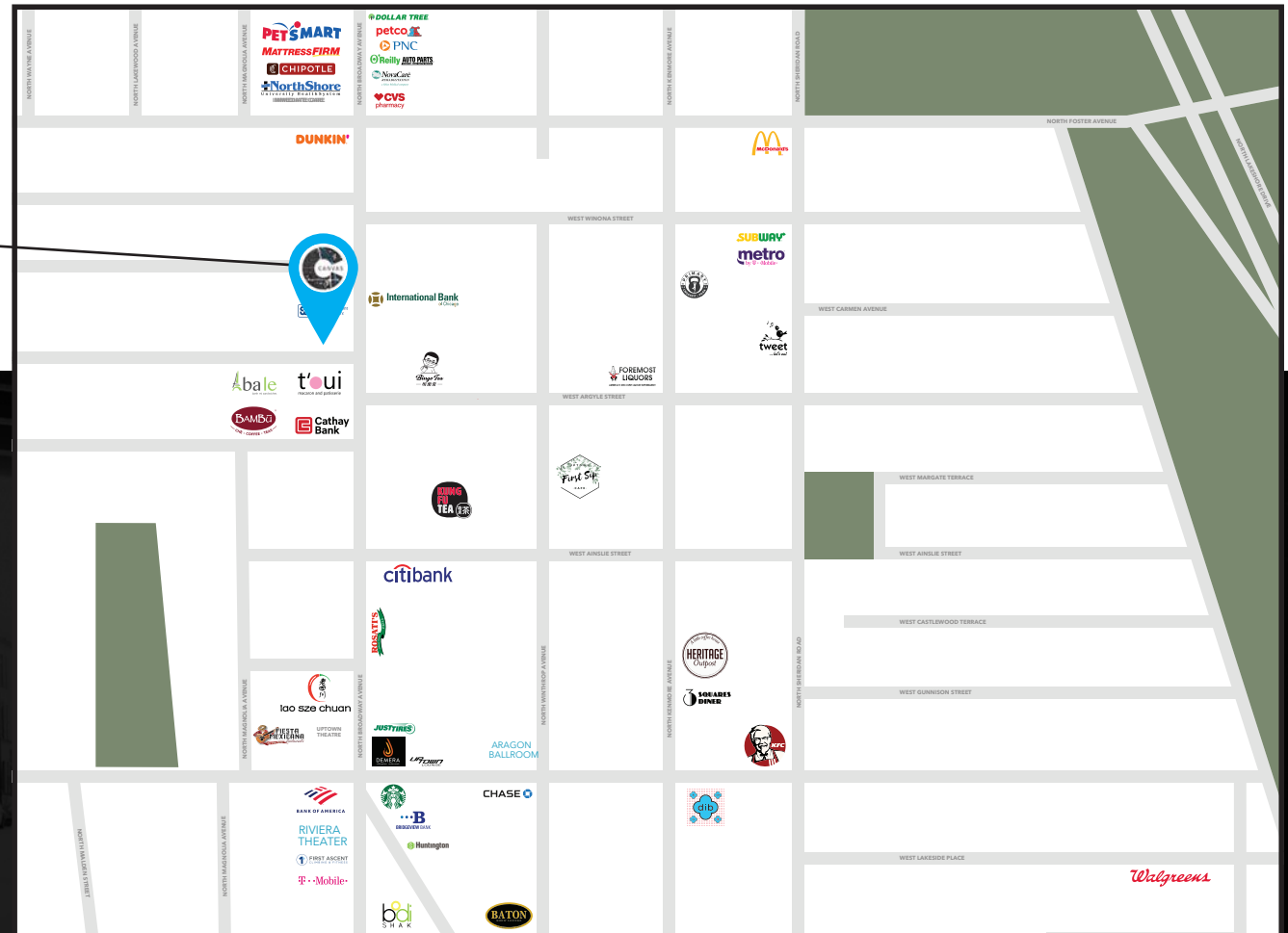
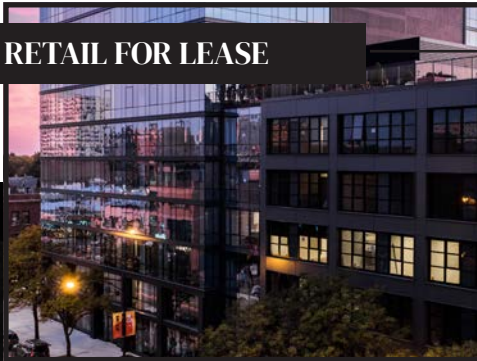


CANVAS

STREET MAP

5050 N. Broadway Street
CHICAGO, ILLINOIS

RETAIL FOR LEASE



FOR MORE INFORMATION,
PLEASE CONTACT

ANDREW BECKER
abecker@canvasrealestate.com
312.231.26009

KATE WYANT
kwyant@canvasrealestate.com
630.730.5239



CANVAS