




900 N. RUSH

NORTHWEST CORNER OF RUSH & DELAWARE





**PREMIER 4,196 SF
GROUND FLOOR
OPPORTUNITY AT THE
NORTHWEST
CORNER OF RUSH
AND DELAWARE**

95 FT
OF FRONTAGE
ALONG RUSH

18 FT
OF FRONTAGE
ALONG DELAWARE

113 FT
OF WRAPAROUND
FRONTAGE

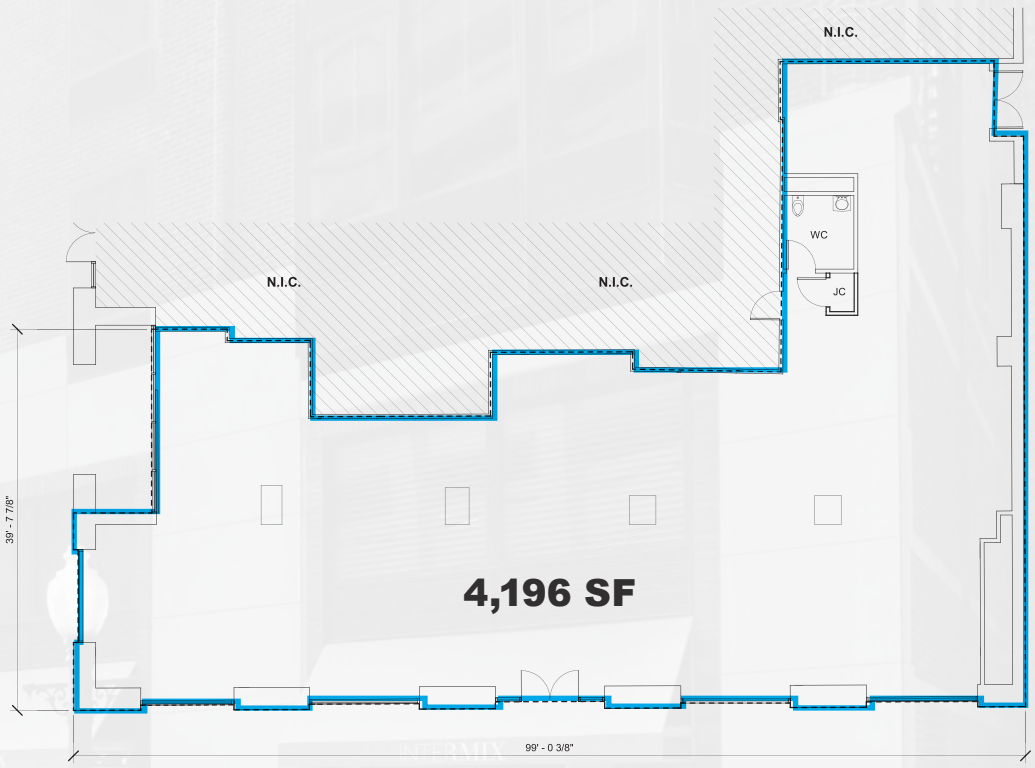
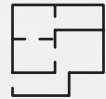
SINGLE TENANT PLAN

GROUND FLOOR

SPACE AVAILABLE

4,196 sqft

Ground Floor



MULTI TENANT PLAN

DEMISED SCENARIO



SPACE AVAILABLE

866 sqft

TENANT A - DEAL PENDING



1,270 sqft

TENANT B - DEAL PENDING



1,974 sqft

TENANT C



**900 NORTH RUSH IS LOCATED
IN CHICAGO'S PREMIER
DESTINATION FOR LUXURY LIVING,
SHOPPING, DINING AND ENTERTAINMENT
IN THE PRESTIGIOUS GOLD COAST
NEIGHBORHOOD WITHIN FOUR BLOCKS
OF +6,000 KEYS AND 35 HOTELS,
INCLUDING THE FOUR SEASONS, THE
WALDORF ASTORIA, THE VICEROY, THE
RITZ CARLTON AND THE PENINSULA.**

+54M

VISITORS TO
CHICAGO IN 2018

+10B

RETAIL SALES IN 2018 ON
MAG MILE AND GOLD COAST

+30B

RETAIL SALES IN 2018
WITHIN A HALF-MILE RADIUS

+300M

ANNUAL RESTAURANT SALES
WITHIN A 3-BLOCK RADIUS

STREET MAP

EAST OAK STREET

Logos and brands located between East Oak Street and East Walton Street:

- citibank
- Cartier
- BALENCIAGA
- milk + honey
- HERMÈS PARIS
- LAFAYETTE 148 NEW YORK
- Poullade
- SUITSUPPLY
- GIORGIO ARMANI
- OLIVER PEOPLES
- CELINE
- BRUNELLO CUCINELLI
- VERSACE
- Dior
- AMIRI
- patagonia
- Sprinkles
- Reformation
- KSABI
- BRANDY MELVILLE
- Wilson
- eskandar
- SWISS ATELIER JEWELLERS
- DOC B's FRESH KITCHEN
- WALGREENS
- Madewell
- Glossier
- lululemon
- athletica
- BOTTEGA VENETA
- BRAVCO
- TORY BURCH
- LALIQUE
- L LA
- GEORGE GREENE
- LOEWE
- HARRY WINSTON
- Le Colonial
- MONCLER
- Van Cleef & Arpels
- CHANEL
- A-K-R-I-S-
- Paul Stuart
- RAZNY
- RICHARD MILLE
- TODS
- MORGENTHAL FREDERICKS

EAST WALTON STREET

Logos and brands located between East Walton Street and East Delaware Place:

- INDOCHINO
- ADALINA
- LENSCRAFTERS
- @properties
- CHASE
- IWC SCHAFFHAUSEN
- MARGEAUX
- VERONICA BEARD
- ARITZIA
- 900 N. RUSH
- TESLA
- bloomingdales
- MARIO TRICOCI
- EQUINOX
- GUCCI
- MONTBLANC
- 900 NORTH MICHIGAN SHOPS
- MARCUS
- SIDNEY GARBER
- FOUR SEASONS
- MaxMara
- WALDORF ASTORIA HOTEL & RESIDENCES
- SAINT LAURENT
- PANERA
- TALBOT
- USE & THE JUICE

EAST DELAWARE PLACE

Logos and brands located between East Delaware Place and East Chestnut Street:

- CHICAGO SINAI CONGREGATION
- PIZANO'S PIZZA & PASTA
- BIG SUBBERS
- PUPS
- CIRCLE K
- STARBUCKS
- CONTESSA BOTTEGA rag & bone
- POTASH
- TEMPO CAFE
- SOFITEL LUXURY HOTELS
- jenis
- PETER MILLAR
- PNC
- RIVIAN
- THE WHITEHALL HOTEL
- Chicago's True Independent Boutique Hotel
- FOUR+H presbyterian church
- Selina

EAST CHESTNUT STREET

The Drake
REAL CHICAGO

Logos and brands located between North State Street and North Michigan Avenue:

- INDOCHINO
- ADALINA
- LENSCRAFTERS
- @properties
- CHASE
- IWC SCHAFFHAUSEN
- MARGEAUX
- VERONICA BEARD
- ARITZIA
- 900 N. RUSH
- TESLA
- bloomingdales
- MARIO TRICOCI
- EQUINOX
- GUCCI
- MONTBLANC
- 900 NORTH MICHIGAN SHOPS
- MARCUS
- SIDNEY GARBER
- FOUR SEASONS
- MaxMara
- WALDORF ASTORIA HOTEL & RESIDENCES
- SAINT LAURENT
- PANERA
- TALBOT
- USE & THE JUICE

NORTH MICHIGAN AVENUE

Logos and brands located between North State Street and North Michigan Avenue:

- INDOCHINO
- ADALINA
- LENSCRAFTERS
- @properties
- CHASE
- IWC SCHAFFHAUSEN
- MARGEAUX
- VERONICA BEARD
- ARITZIA
- 900 N. RUSH
- TESLA
- bloomingdales
- MARIO TRICOCI
- EQUINOX
- GUCCI
- MONTBLANC
- 900 NORTH MICHIGAN SHOPS
- MARCUS
- SIDNEY GARBER
- FOUR SEASONS
- MaxMara
- WALDORF ASTORIA HOTEL & RESIDENCES
- SAINT LAURENT
- PANERA
- TALBOT
- USE & THE JUICE

NORTH STATE STREET

WILLIAM B. OGDEN PUBLIC SCHOOL

Logos and brands located between North State Street and North Michigan Avenue:

- INDOCHINO
- ADALINA
- LENSCRAFTERS
- @properties
- CHASE
- IWC SCHAFFHAUSEN
- MARGEAUX
- VERONICA BEARD
- ARITZIA
- 900 N. RUSH
- TESLA
- bloomingdales
- MARIO TRICOCI
- EQUINOX
- GUCCI
- MONTBLANC
- 900 NORTH MICHIGAN SHOPS
- MARCUS
- SIDNEY GARBER
- FOUR SEASONS
- MaxMara
- WALDORF ASTORIA HOTEL & RESIDENCES
- SAINT LAURENT
- PANERA
- TALBOT
- USE & THE JUICE

Logos and brands located between North State Street and North Michigan Avenue:

- CHICAGO SINAI CONGREGATION
- PIZANO'S PIZZA & PASTA
- BIG SUBBERS
- PUPS
- CIRCLE K
- STARBUCKS
- CONTESSA BOTTEGA rag & bone
- POTASH
- TEMPO CAFE
- SOFITEL LUXURY HOTELS
- jenis
- PETER MILLAR
- PNC
- RIVIAN
- THE WHITEHALL HOTEL
- Chicago's True Independent Boutique Hotel
- FOUR+H presbyterian church
- Selina

NORTH WABASH AVENUE

Logos and brands located between North State Street and North Michigan Avenue:

- CHICAGO SINAI CONGREGATION
- PIZANO'S PIZZA & PASTA
- BIG SUBBERS
- PUPS
- CIRCLE K
- STARBUCKS
- CONTESSA BOTTEGA rag & bone
- POTASH
- TEMPO CAFE
- SOFITEL LUXURY HOTELS
- jenis
- PETER MILLAR
- PNC
- RIVIAN
- THE WHITEHALL HOTEL
- Chicago's True Independent Boutique Hotel
- FOUR+H presbyterian church
- Selina

Logos and brands located between North State Street and North Michigan Avenue:

- CHICAGO SINAI CONGREGATION
- PIZANO'S PIZZA & PASTA
- BIG SUBBERS
- PUPS
- CIRCLE K
- STARBUCKS
- CONTESSA BOTTEGA rag & bone
- POTASH
- TEMPO CAFE
- SOFITEL LUXURY HOTELS
- jenis
- PETER MILLAR
- PNC
- RIVIAN
- THE WHITEHALL HOTEL
- Chicago's True Independent Boutique Hotel
- FOUR+H presbyterian church
- Selina

Logos and brands located between North State Street and North Michigan Avenue:

- CHICAGO SINAI CONGREGATION
- PIZANO'S PIZZA & PASTA
- BIG SUBBERS
- PUPS
- CIRCLE K
- STARBUCKS
- CONTESSA BOTTEGA rag & bone
- POTASH
- TEMPO CAFE
- SOFITEL LUXURY HOTELS
- jenis
- PETER MILLAR
- PNC
- RIVIAN
- THE WHITEHALL HOTEL
- Chicago's True Independent Boutique Hotel
- FOUR+H presbyterian church
- Selina

Logos and brands located between North State Street and North Michigan Avenue:

- CHICAGO SINAI CONGREGATION
- PIZANO'S PIZZA & PASTA
- BIG SUBBERS
- PUPS
- CIRCLE K
- STARBUCKS
- CONTESSA BOTTEGA rag & bone
- POTASH
- TEMPO CAFE
- SOFITEL LUXURY HOTELS
- jenis
- PETER MILLAR
- PNC
- RIVIAN
- THE WHITEHALL HOTEL
- Chicago's True Independent Boutique Hotel
- FOUR+H presbyterian church
- Selina

Logos and brands located between North State Street and North Michigan Avenue:

- CHICAGO SINAI CONGREGATION
- PIZANO'S PIZZA & PASTA
- BIG SUBBERS
- PUPS
- CIRCLE K
- STARBUCKS
- CONTESSA BOTTEGA rag & bone
- POTASH
- TEMPO CAFE
- SOFITEL LUXURY HOTELS
- jenis
- PETER MILLAR
- PNC
- RIVIAN
- THE WHITEHALL HOTEL
- Chicago's True Independent Boutique Hotel
- FOUR+H presbyterian church
- Selina

Logos and brands located between North State Street and North Michigan Avenue:

- CHICAGO SINAI CONGREGATION
- PIZANO'S PIZZA & PASTA
- BIG SUBBERS
- PUPS
- CIRCLE K
- STARBUCKS
- CONTESSA BOTTEGA rag & bone
- POTASH
- TEMPO CAFE
- SOFITEL LUXURY HOTELS
- jenis
- PETER MILLAR
- PNC
- RIVIAN
- THE WHITEHALL HOTEL
- Chicago's True Independent Boutique Hotel
- FOUR+H presbyterian church
- Selina



ANTHONY CAMPAGNI
AC@CANVASREALESTATE.COM
847-651-8669

ELAN RASANSKY
ELAN@CANVASREALESTATE.COM
414-380-1555

