



# 1419 N. Wells Street CHICAGO, ILLINOIS

**Retail/Restaurant Space Available**  
East block of Wells between Schiller and North

FOR MORE INFORMATION,  
PLEASE CONTACT

ANTHONY CAMPAGNI  
ac@canvasrealestate.com  
847.651.8669

ELAN RASANSKY  
elan@canvasrealestate.com  
414.380.1555



## DEMOGRAPHICS



**86.3k+**

Total Population  
1 Mile

35.6k+  
0.5 Miles

11.4k+  
0.25 Miles



**\$175k+**

Average HH Income  
1 Mile

\$167k+  
0.5 Miles

\$180k+  
0.25 Miles



**95.9k+**

Daytime Population  
1 Mile

25.9k+  
0.5 Miles

7.89k+  
0.25 Miles



### OLD TOWN

- Approximately 4,000 sf of ground floor retail space available for lease
- Located in the heart of Old Town, immediately adjacent to The Scout (Coming Soon) and within the same property as Jeni's Splendid Ice Creams.
- Multiple outdoor patio seating opportunities are available

### NEIGHBORING RETAILERS

Old Jerusalem Restaurant, Orso's Italian Restaurant, Small Cheval, Café Sushi, Crumbl Cookies, Dom's Kitchen & Market and many more.



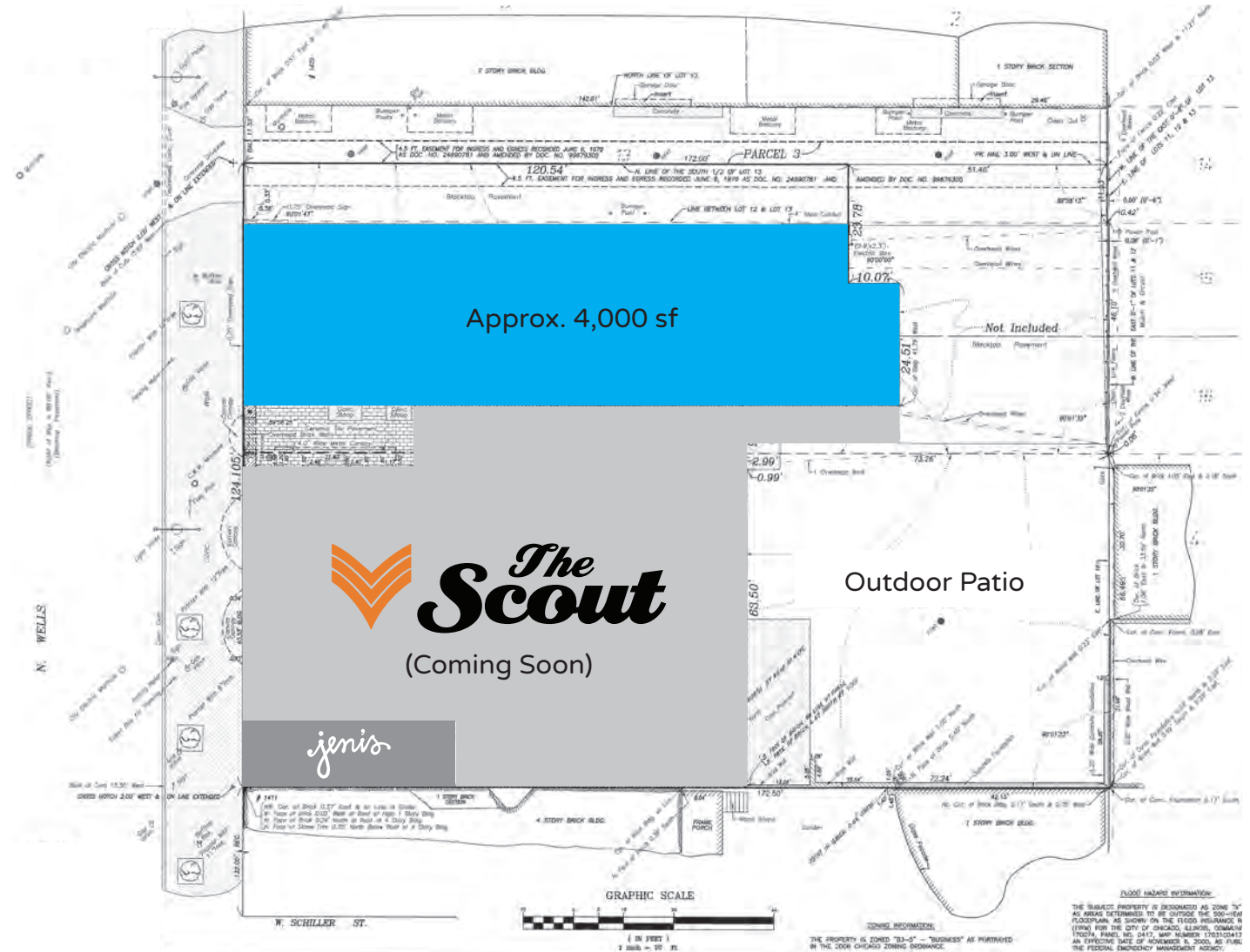
CANVAS

# SITE LAYOUT

SPACE AVAILABLE



4,000<sup>sf</sup>



CANVAS

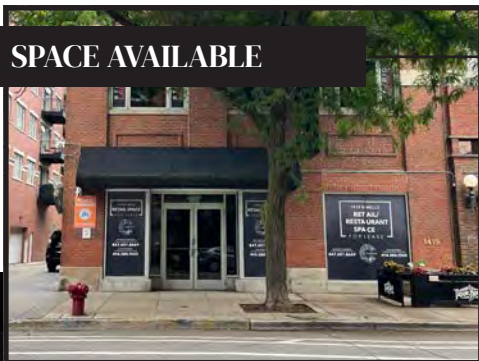




# STREET MAP

**1419 N. Wells Street**  
CHICAGO, ILLINOIS

## SPACE AVAILABLE



**FOR MORE INFORMATION,  
PLEASE CONTACT**

**ANTHONY CAMPAGNI**  
ac@canvasrealestate.com  
847.651.8669

**ELAN RASANSKY**  
 elan@canvasrealestate.com  
 414.380.1555

# CANVAS

