

SULLIVAN CENTER
RESTAURANT SPACE(S) AVAILABLE

18 & 28 S. Wabash Ave.
THE LOOP - CHICAGO



CANVAS

THE LOOP

Located at the West block of Wabash
between Madison and Monroe

HIGHLIGHTS

- Second generation restaurant spaces
- The Sullivan Center, a one million square foot retail and office complex located in the heart of the Center Loop District in Downtown Chicago, is one of the city's iconic structures and home to a number of retail and global office users
- One block south of new CTA Washington/Wabash station, 10,000 riders daily
- One block west of Millennium Park, Chicago's most popular tourist attraction with 25 million visitors per year
- Surrounding neighbors include Vans, 32 South State - Jordan Store, Fairgrounds Craft Coffee and Tea, Nordstrom Rack, Target, Shake Shack, and Goddess and the Baker
- Surrounding hotels include Chicago Athletic Association and Palmer House a Hilton Hotel

NEIGHBORHOOD RETAILERS

Naf Naf Grill
FALAFEL • SHAWARMA • KABABS

MOMENTO

Nando's
Peri-Peri



FLATTOP
GRILL

Goddess
AND THE BAKER

Huntington



DEMOGRAPHICS



93.3k+

Total Population
1 Mile



\$184k+

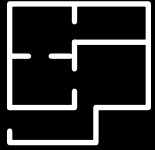
Average HH Income
1 Mile



524k+

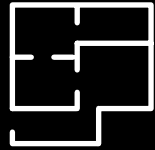
Daytime Population
1 Mile

SPACE AVAILABLE



4,054 sf

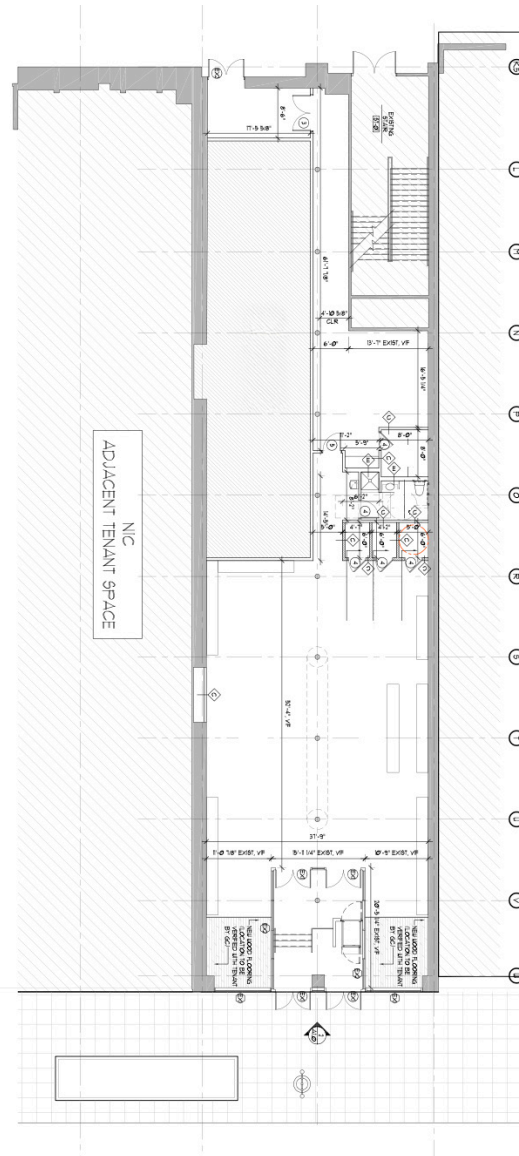
18 S. Wabash - Ground Level



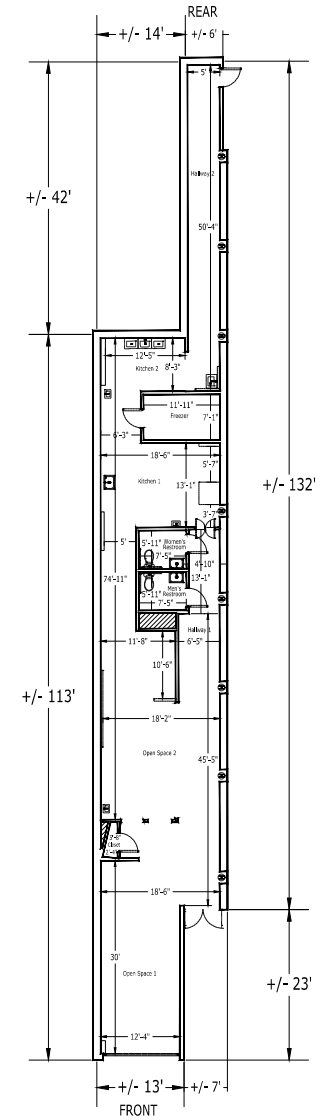
2,413 sf

28 S. Wabash - Ground Level

FLOOR PLAN



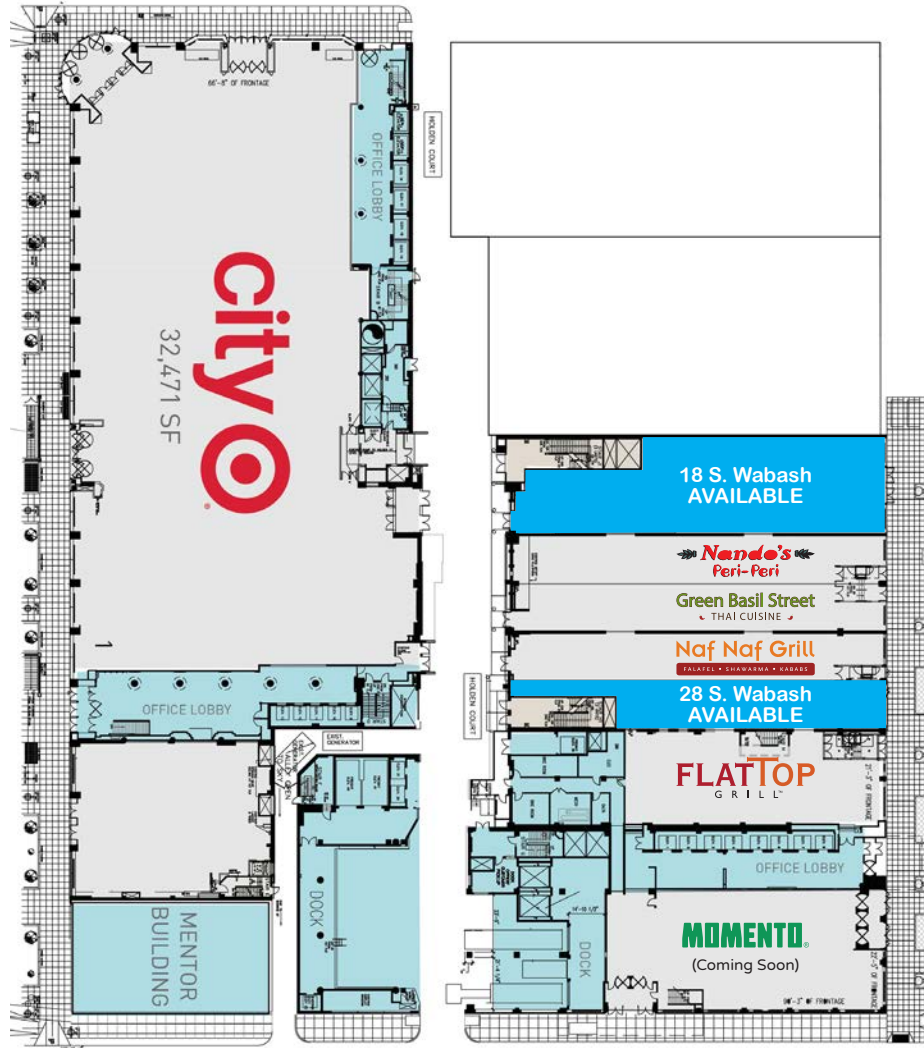
18 S. Wabash Avenue
SOUTH WABASH AVENUE



28 S. Wabash Avenue
SOUTH WABASH AVENUE

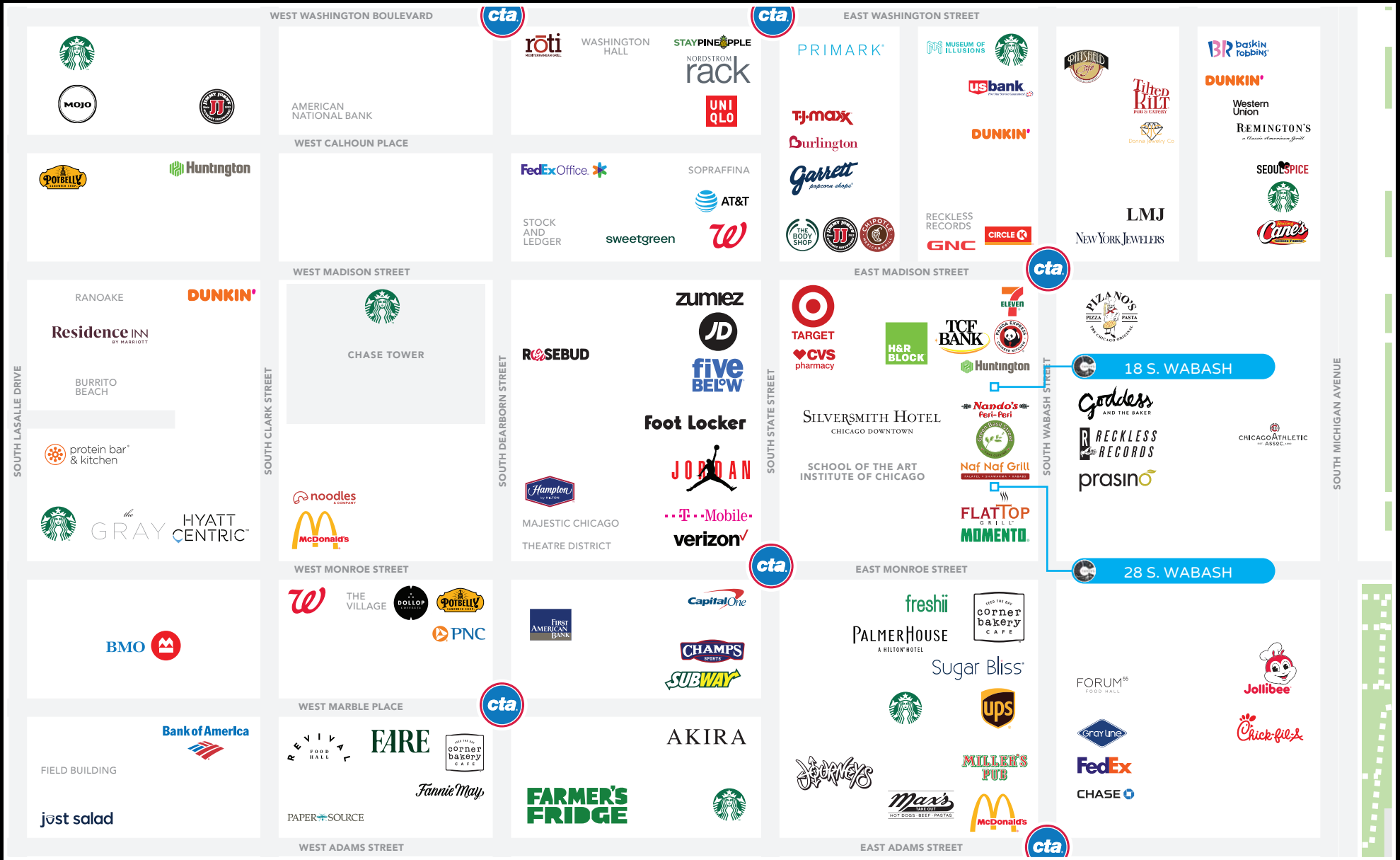
SITE PLAN

WEST MADISON STREET



WEST MONROE STREET

SOUTH WABASH AVENUE



FOR MORE INFORMATION, PLEASE CONTACT

ANTHONY CAMPAGNI
 ac@canvasrealestate.com
 847.651.8669

ELAN RASANSKY
 elan@canvasrealestate.com
 414.380.1555

QUINN THOMAS
 qthomas@canvasrealestate.com
 847.651.5589

CANVAS

2211 North Elston Avenue,
 Suite 307, Chicago
 www.canvasrealestate.com