



## 1960 N. Clybourn CHICAGO, ILLINOIS

### Retail/Medical Space Available

Northwest corner of  
Clybourn and Clifton

FOR MORE INFORMATION,  
PLEASE CONTACT

**ANDREW BECKER**  
abecker@canvasrealestate.com  
312.231.2600

**MICHAEL WEXLER**  
mwexler@canvasrealestate.com  
773.426.1759

**JOHN BASSI**  
jbassi@canvasrealestate.com  
708.822.4583



## DEMOGRAPHICS



**55.5k+**

Total Population  
1 Mile

9.65k+      2.19k+  
0.5 Miles    0.25 Miles



**\$218k+**

Average HH Income  
1 Mile

259k+      257k+  
0.5 Miles    0.25 Miles



**55.7k+**

Daytime Population  
1 Mile

12.6k+      3.57k+  
0.5 Miles    0.25 Miles



### LINCOLN PARK

- The subject property is located on a prime block along Clybourn Avenue in Chicago's coveted Lincoln Park neighborhood.
- Clybourn Avenue is the dominant retail corridor for many national tenants and the preferred shopping destination for several north-side neighborhoods.
- Lincoln Yards, a 50+ acre redevelopment of former industrial land is immediately adjacent to the site. The site will add millions of square feet of office, residential and retail to an already vibrant corridor.
- The two story, heavy timber and brick building features 16' ceiling heights with opportunities for retail and office space.

### NEIGHBORING RETAILERS

Arhaus, Blue Dot, Protein Bar, Petco, Protein Bar, Walter E. Smithe, Moosejaw, Jayson Home, HomeGoods, Natuzzi, Trader Joe's, Steinway, Binny's Beverage Depot

CANVAS

# FLOOR PLANS

SPACE AVAILABLE



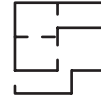
**1,557 sqft**

Ground Level



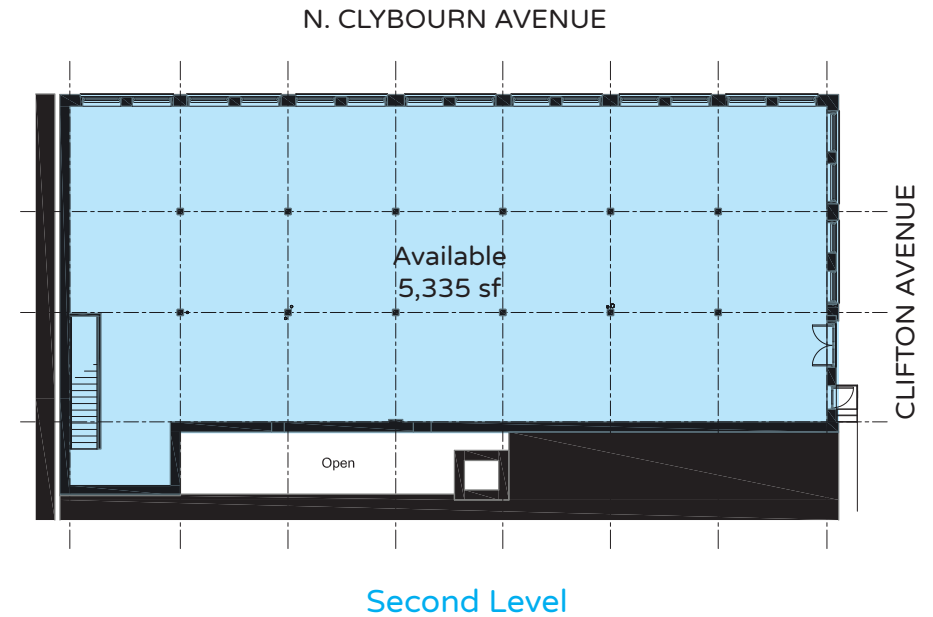
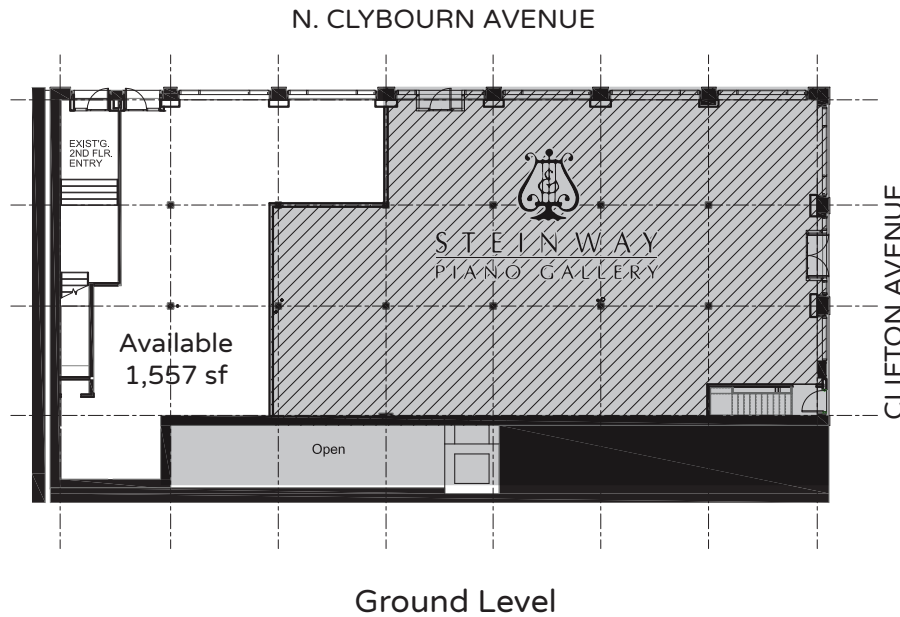
**5,335 sqft**

Second Level



**6,892 sqft**

Total



CANVAS



# STREET MAP

1960 N. Clybourn Avenue  
CHICAGO, ILLINOIS

SPACE AVAILABLE



FOR MORE INFORMATION,  
PLEASE CONTACT

ANDREW BECKER

abecker@canvasrealestate.com

312.231.2600

MICHAEL WEXLER

mwexler@canvasrealestate.com

773.426.1759

JOHN BASSI

jbassi@canvasrealestate.com

708.822.4583

# CANVAS

