



1970 N. Clybourn

CHICAGO, ILLINOIS

Retail/Medical Space Available
Along Clybourn Corridor south of Cortland

FOR MORE INFORMATION, PLEASE CONTACT

ANDREW BECKER • 312.231.2600
abecker@canvasrealestate.com

MICHAEL WEXLER • 773.426.1759
mwexler@canvasrealestate.com

JOHN BASSI • 708.822.4583
jbassi@canvasrealestate.com

DEMOGRAPHICS



55.5k+

Total Population
1 Mile

9.65k+ 2.19k+
0.5 Miles 0.25 Miles



\$218k+

Average HH Income
1 Mile

\$259k+ \$257k+
0.5 Miles 0.25 Miles



55.7k+

Daytime Population
1 Mile

12.6k+ 3.57k+
0.5 Miles 0.25 Miles



LINCOLN PARK

- The subject property is located on a prime block along Clybourn Avenue in Chicago's coveted Lincoln Park neighborhood.
- Clybourn Avenue is the dominant retail corridor for many national tenants and the preferred shopping destination for several north-side neighborhoods.
- Lincoln Yards, a 50+ acre redevelopment of former industrial land is immediately adjacent to the site. The site will add millions of square feet office, residential and retail to an already vibrant corridor.
- The single story, +/- 8,500 square foot building comes with an adjacent and dedicated surface parking lot with approximately 25 spaces.
- The property is ideal for a variety of uses including grocery, restaurant, furniture, convenience, medical and other.

NEIGHBORING RETAILERS

Arhaus, Blue Dot, Protein Bar, Petco, Protein Bar, Walter E. Smithe, Moosejaw, Jayson Home, HomeGoods, Natuzzi, Trader Joe's, Steinway, Binny's Beverage Depot

CANVAS

FLOOR PLAN

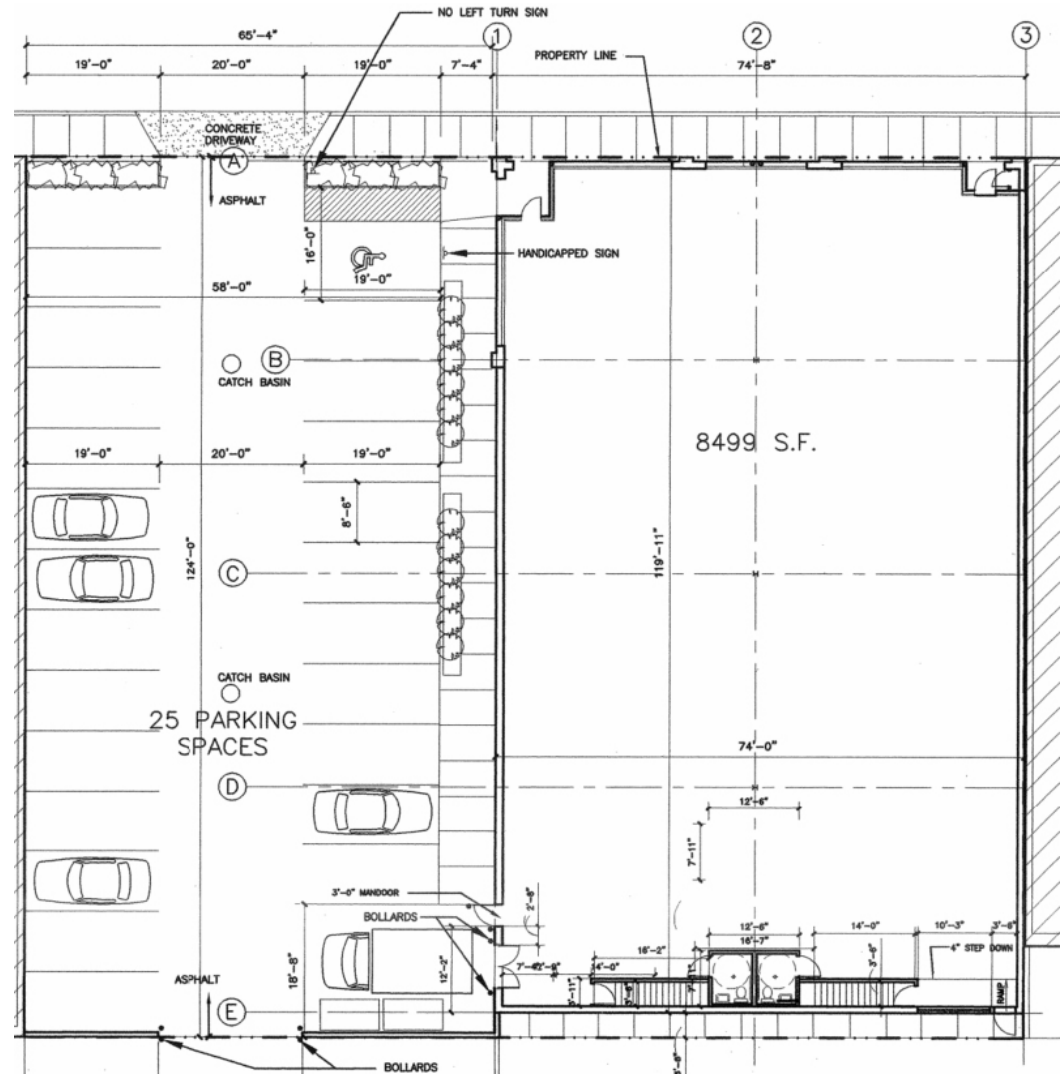
SPACE AVAILABLE



8,500 sqft

Ground Level

NORTH CLYBOURN AVENUE

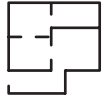


CANVAS



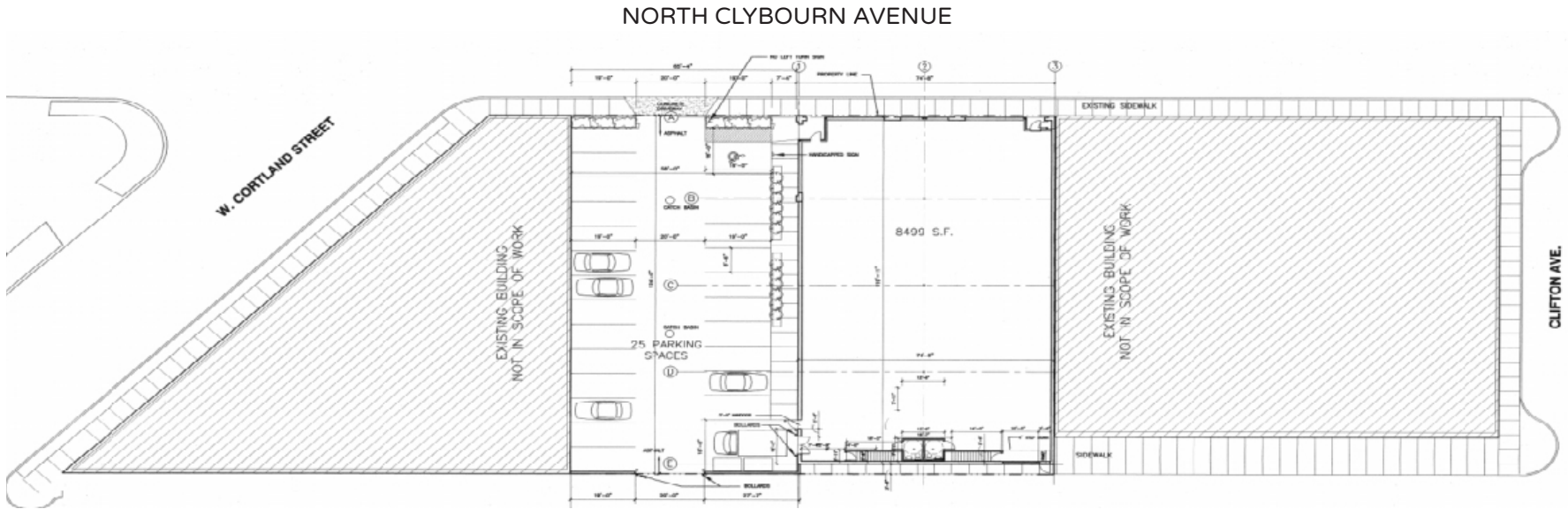
FLOOR PLAN

SPACE AVAILABLE



8,500 sqft

Ground Level



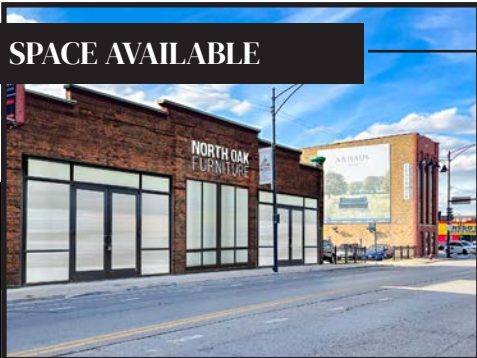
CANVAS



STREET MAP

1970 N. Clybourn Avenue
CHICAGO, ILLINOIS

SPACE AVAILABLE



FOR MORE INFORMATION,
PLEASE CONTACT

ANDREW BECKER

abecker@canvasrealestate.com

312.231.2600

MICHAEL WEXLER

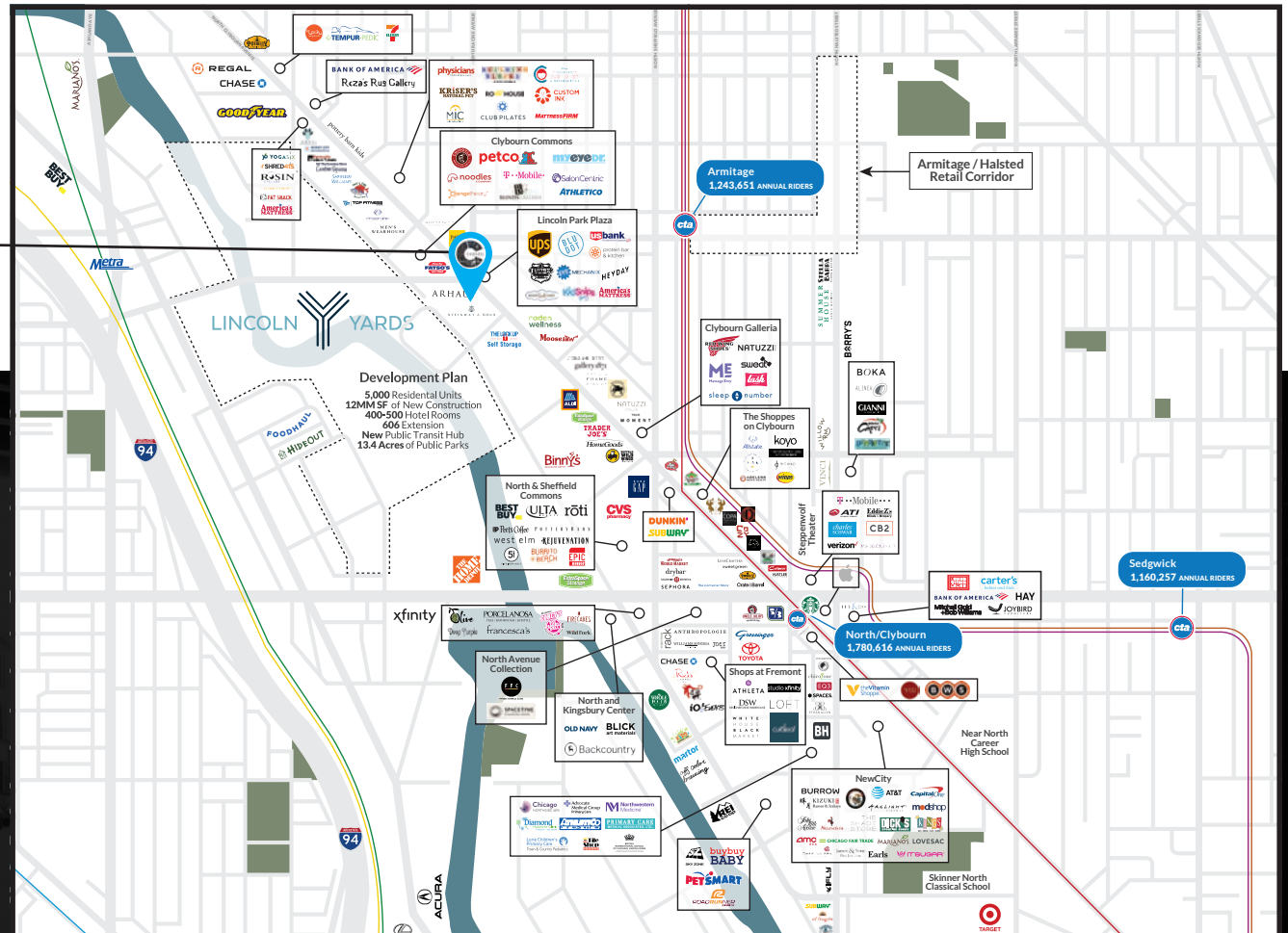
mwexler@canvasrealestate.com

773.426.1759

JOHN BASSI

jbassi@canvasrealestate.com

708.822.4583



CANVAS