



330 S. Wells Street

CHICAGO, ILLINOIS

Retail Space Available
Northwest corner of Wells and Van Buren

FOR MORE INFORMATION, PLEASE CONTACT
ANTHONY CAMPAGNI • 847.651.8669
ac@canvasrealestate.com

ELAN RASANSKY • 414.380.1555
elan@canvasrealestate.com

KATE WYANT • 630.730.5239
kwyant@canvasrealestate.com

DEMOGRAPHICS



80k+

Total Population
1 Mile

19k+
0.5 Miles

2.2k+
0.25 Miles



\$178k+

Average HH Income
1 Mile

\$165k+
0.5 Miles

\$140k+
0.25 Miles



486k+

Daytime Population
1 Mile

263k+
0.5 Miles

75.1k+
0.25 Miles



THE LOOP

- Ground floor corner retail space located at the northwest corner of Wells and Van Buren.
- Steps away from Chicago's historic Financial District.
- Walking distance from CTA Brown, Purple, Orange and Pink lines.
- Building includes 130 new residential rental units.

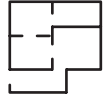
NEIGHBORING RETAILERS

Odoba, Greek Kitchen, Dunkin Donuts, Panda Express, FedEx Office, and Giordano's

CANVAS

FLOOR PLANS

SINGLE TENANT - OPTION A



5,225 sqft

Tenant A

FRONTAGE



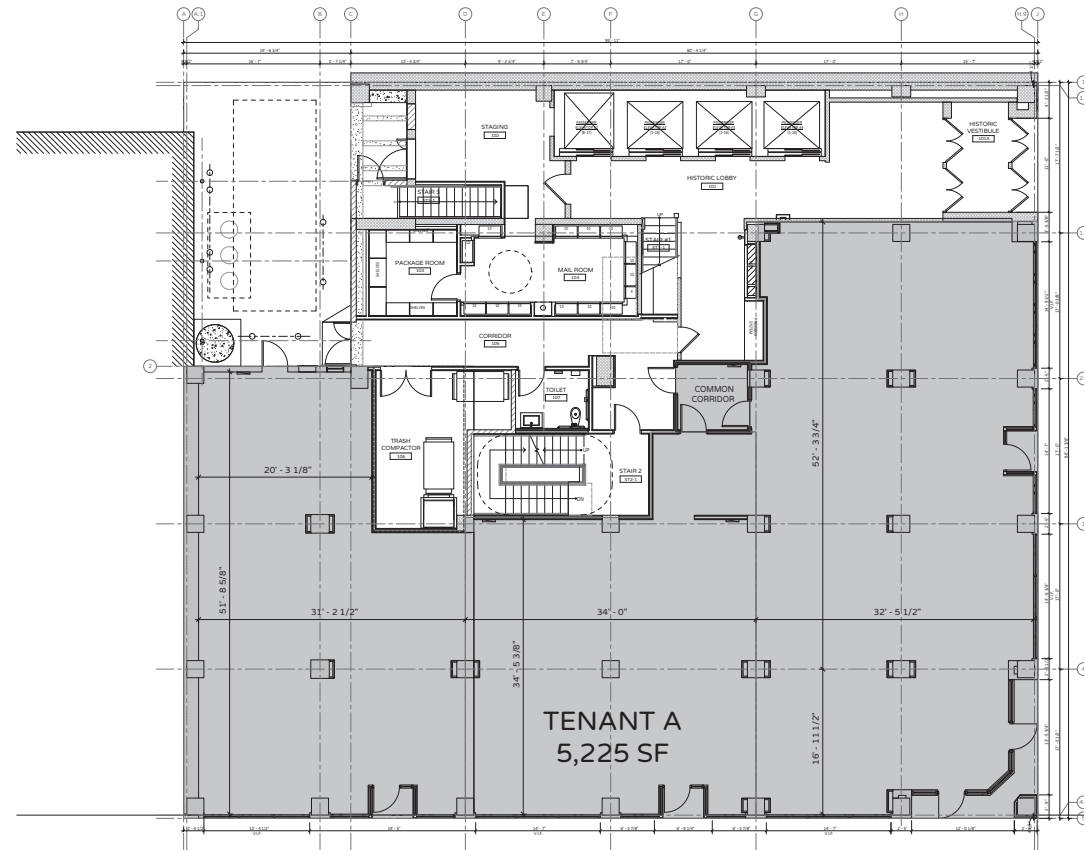
68 ft

S. Wells Street



97 ft

W. Van Buren Street



W. VAN BUREN STREET

S. WELLS STREET

CANVAS



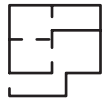
FLOOR PLANS

MULTI TENANT - OPTION B



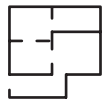
1,536 sqft

Tenant A



1,346 sqft

Tenant B



2,343 sqft

Tenant C

FRONTAGE



31 ft

Tenant A on W. Van Buren Street



34 ft

Tenant B on W. Van Buren Street



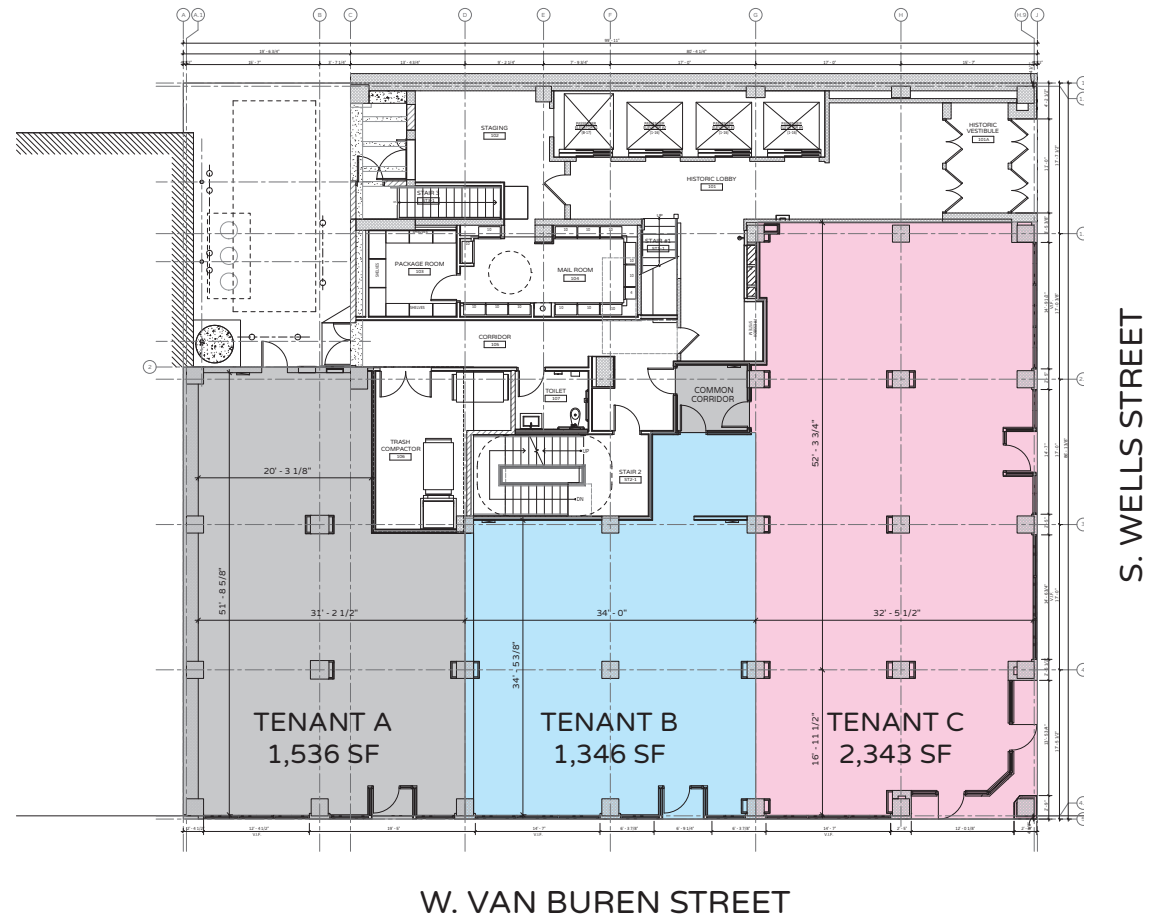
32 ft

Tenant C on W. Van Buren Street



68 ft

Tenant C on S. Wells Street



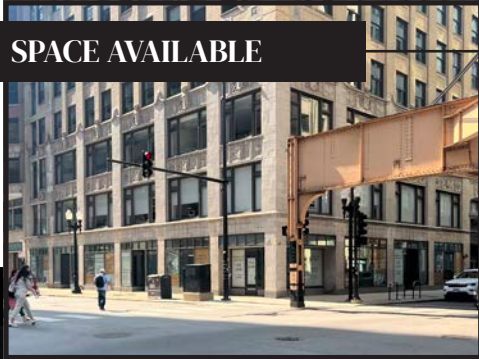
CANVAS



STREET MAP

330 S. Wells Street
CHICAGO, ILLINOIS

SPACE AVAILABLE



FOR MORE INFORMATION,
PLEASE CONTACT

ANTHONY CAMPAGNI
ac@canvasrealestate.com
847.651.8669

ELAN RASANSKY
elan@canvasrealestate.com
414.380.1555

KATE WYANT
kwyant@canvasrealestate.com
630.730.5239

CANVAS

