



444 N. LaSalle Drive
CHICAGO, ILLINOIS

Retail Space Available

Southwest corner of
LaSalle & Illinois

**FOR MORE INFORMATION,
PLEASE CONTACT**

ANTHONY CAMPAGNI
ac@canvasrealestate.com
847.651.8669

ELAN RASANSKY
elan@canvasrealestate.com
414.380.1555

QUINN THOMAS
qthomas@canvasrealestate.com
847.651.5589



DEMOGRAPHICS



125k+

Total Population
1 Mile

34k+
0.5 Miles

8.3k+
0.25 Miles



\$183k+

Average HH Income
1 Mile

193k+
0.5 Miles

202k+
0.25 Miles

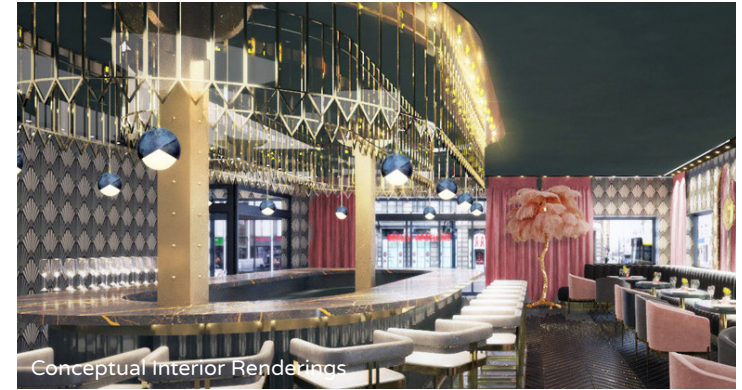


567k+

Daytime Population
1 Mile

159k+
0.5 Miles

31.2k+
0.25 Miles



Conceptual Interior Renderings



Conceptual Interior Renderings



Conceptual Interior Renderings

RIVER NORTH

- Single-tenant restaurant building in the heart of River North, with excellent exposure on LaSalle (20,000 VPD) along with considerable pedestrian traffic
- 2 blocks from CTA “L” train at Merchandise Mart (Purple, Brown Lines and 4 blocks from Clark & Lake (Blue, Green, Orange, Brown, Pink Lines)

NEIGHBORING TENANTS

SUNDA, Joy District, Hubbard Inn, Foxtrot, Lou Malnati’s, and The Hawksmoor (coming soon)

CANVAS

FLOOR PLANS

SPACE AVAILABLE

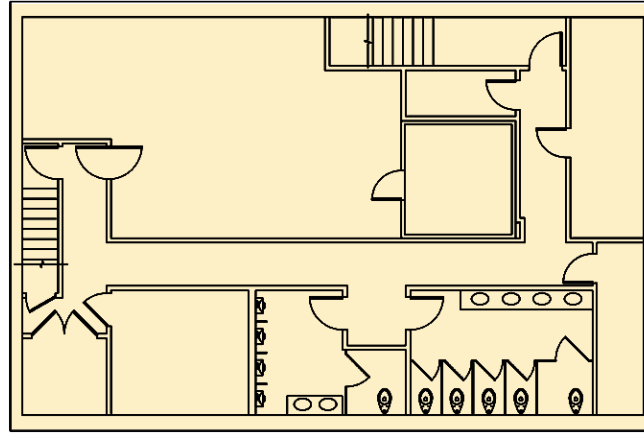
 **2,400 sqft**
Basement

 **2,400 sqft**
Ground Level

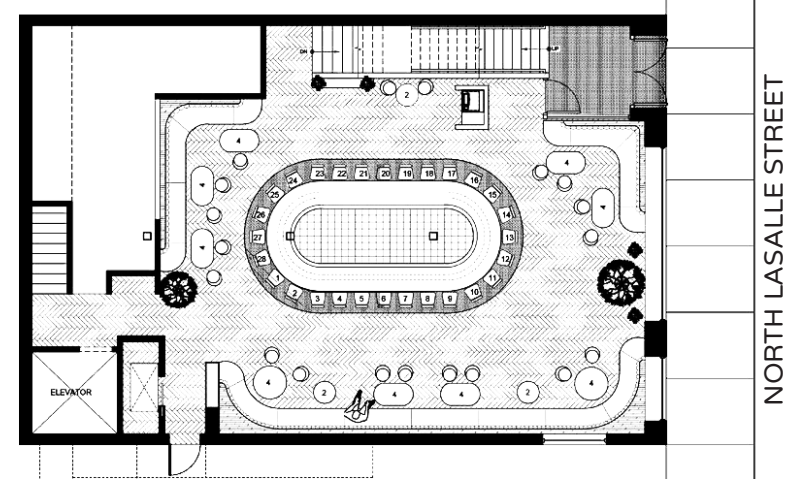
 **2,400 sqft**
Second Level

 **2,400 sqft**
Third Level

 **9,600 sqft**
Total

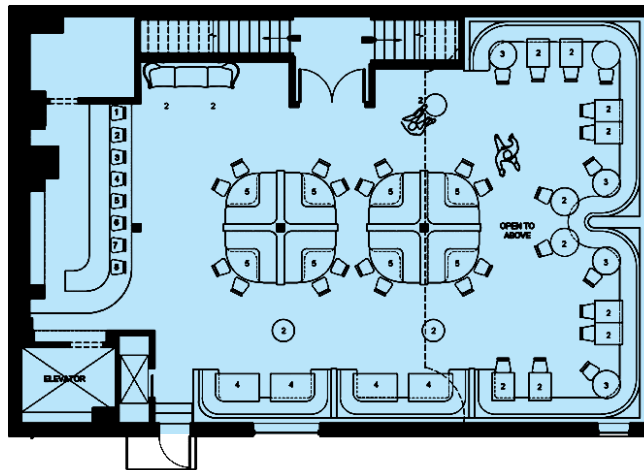


Basement

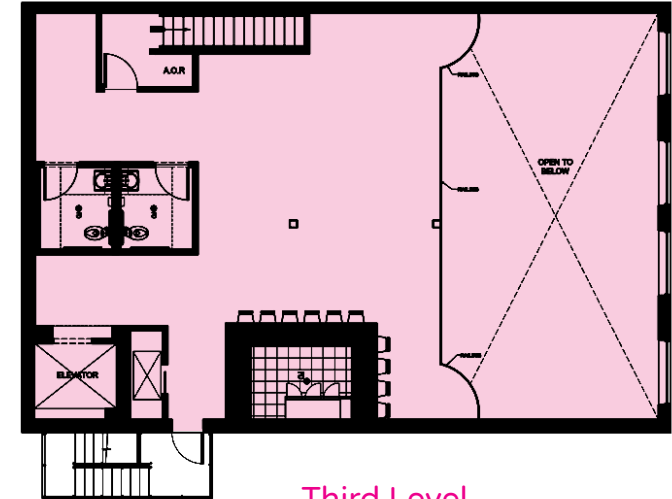


Ground Level

NORTH LASALLE STREET



Second Level



Third Level

NORTH LASALLE STREET

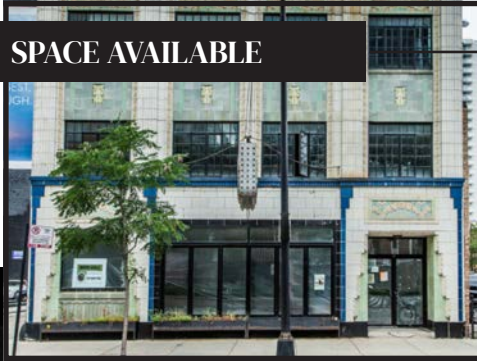
CANVAS



STREET MAP

444 N. LaSalle Drive
CHICAGO, ILLINOIS

SPACE AVAILABLE



FOR MORE INFORMATION,
PLEASE CONTACT

ANTHONY CAMPAGNI

ac@canvasrealestate.com

847.651.8669

ELAN RASANSKY

elan@canvasrealestate.com

414.380.1555

QUINN THOMAS

qthomas@canvasrealestate.com

847.651.5589

CANVAS

