

535 N. St. Clair Street

CHICAGO, ILLINOIS

Retail/Restaurant Space For Lease
Northeast corner of Grand and St. Clair

FOR MORE INFORMATION,
PLEASE CONTACT

ANTHONY CAMPAGNI
ac@canvasrealestate.com
847.651.8669

ELAN RASANSKY
elan@canvasrealestate.com
414.380.1555

DEMOGRAPHICS



102k+

Total Population
1 Mile

47.1k+ 10.4k+
0.5 Miles 0.25 Miles



\$186k+

Average HH Income
1 Mile

\$185k+ \$163k+
0.5 Miles 0.25 Miles



426k+

Daytime Population
1 Mile

155k+ 39.9k+
0.5 Miles 0.25 Miles

STREETERVILLE

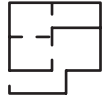
- 535 N. St. Clair is a new construction mixed-use development, designed by Norr. The property consisting of 248 luxury residential units, 44,983 SF of office space, 8,467 SF of ground floor retail space, (divisible), with 15' ceiling heights and 3 levels of parking.
- Located at the northeast corner of St. Clair and Grand Avenue just east of Michigan Avenue in Streeterville.
- Streeterville is a densely developed residential, commercial and entertainment neighborhood that is located between two of Chicago's top tourist destinations, The Magnificent Mile (22 Million visitors per year) and Navy Pier (9 Million visitors per year).
- The submarket is home to Northwestern Memorial Hospital and the School of Medicine (+7,000 employees), as well as Ann & Robert H. Lurie Children's Hospital (+4,000 employees), which continue to drive a strong daytime population.



CANVAS

FLOOR PLAN

SPACE AVAILABLE



8,467 sqft

Ground Level
Divisible

FRONTAGE



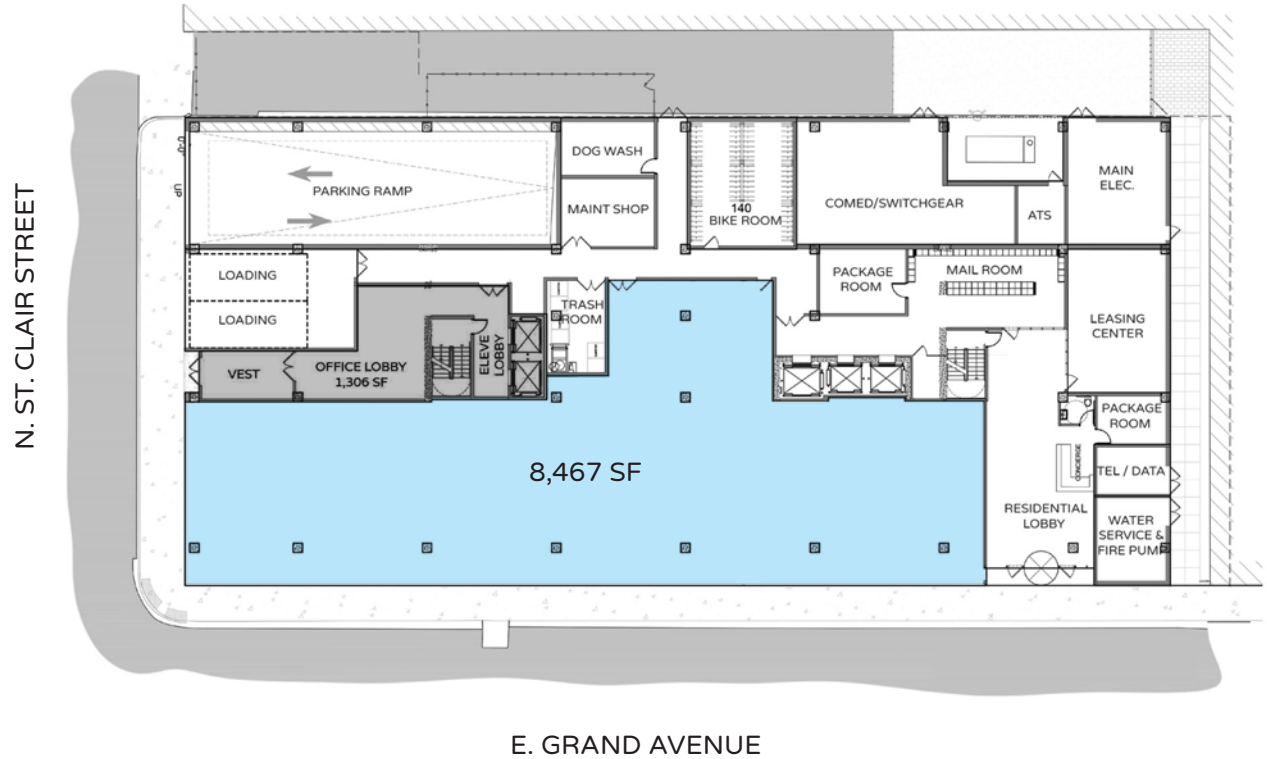
173'11"

on E. Grand Avenue



39'2"

on St. Clair Street



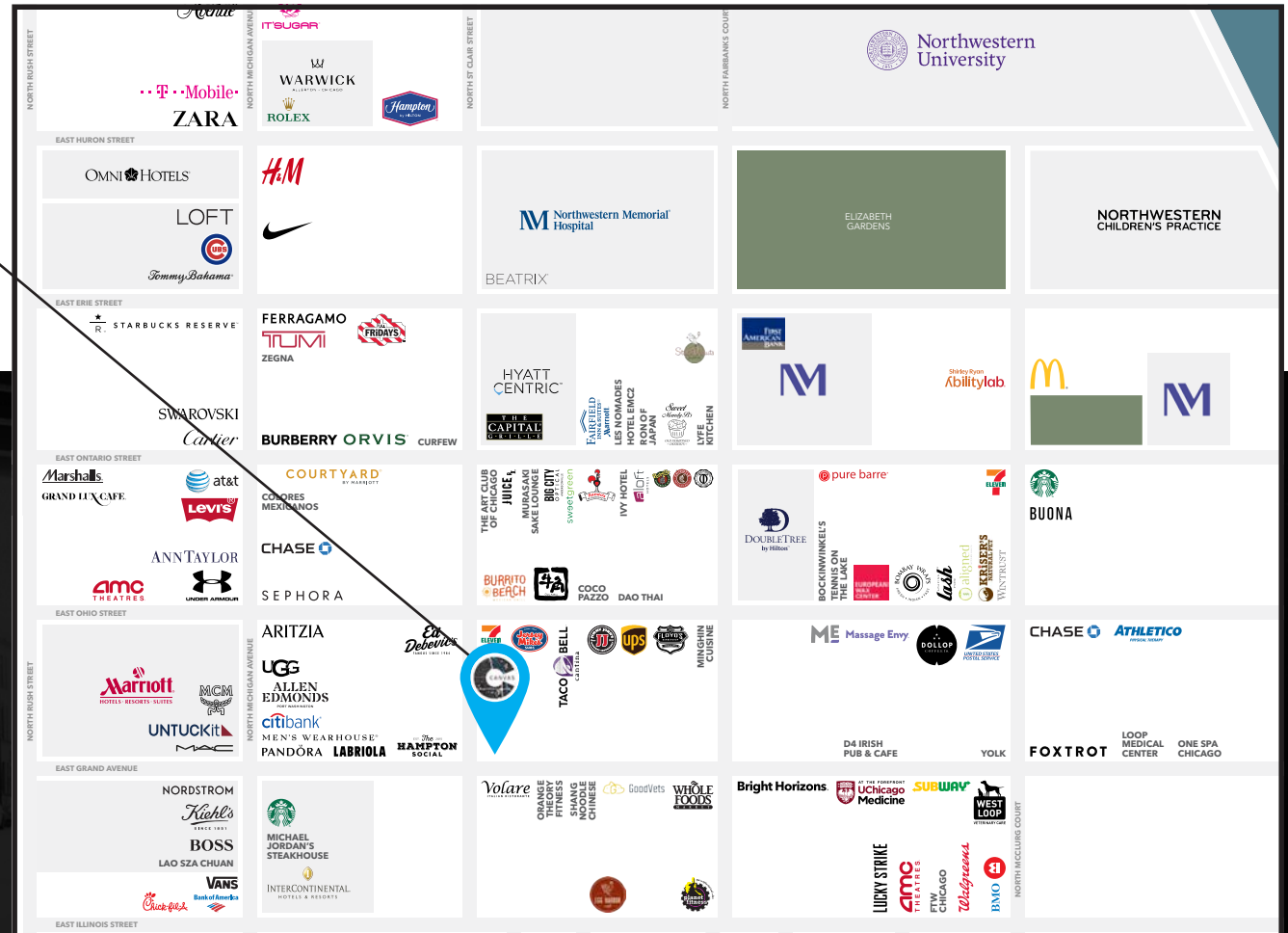
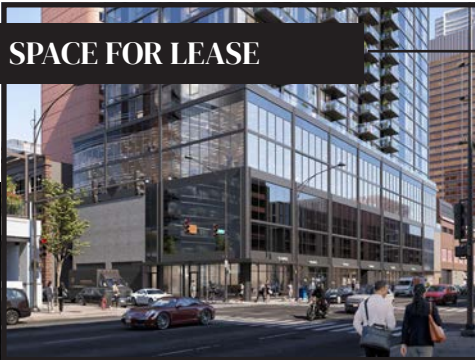
CANVAS



STREET MAP

535 N. St. Clair Street
CHICAGO, ILLINOIS

SPACE FOR LEASE



FOR MORE INFORMATION,
PLEASE CONTACT

ANTHONY CAMPAGNI

ac@canvasrealestate.com

847.651.8669

ELAN RASANSKY

elan@canvasrealestate.com

414.380.1555



CANVAS