



**MICHELANI**

Magnificent Mile / Chicago, IL



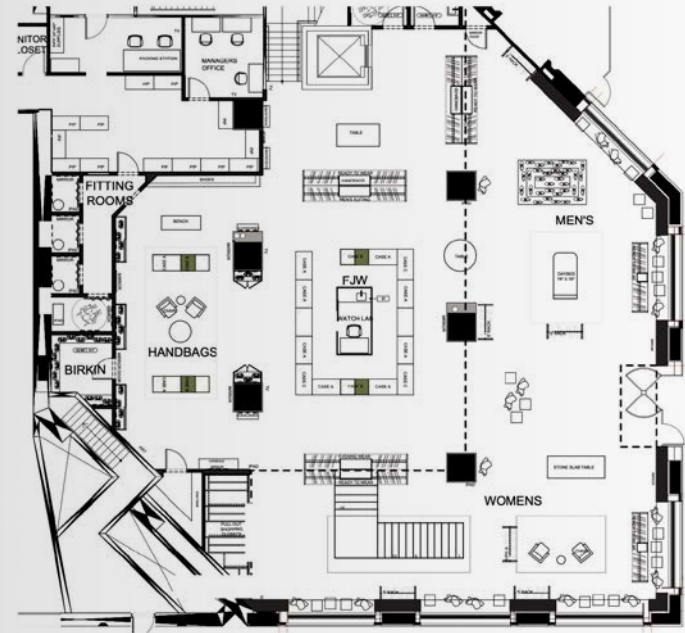
# **Claim one of the '4 Dynamic Corners' along Chicago's Magnificent Mile**

Find your place in the Magnificent Mile, the epicenter of Chicago retail, fashion and lifestyle. From retailers such as Louis Vuitton, Gucci, Zara, H&M, and Neiman Marcus, to hotels like The Drake, and Four Seasons, there are brands here for everyone.

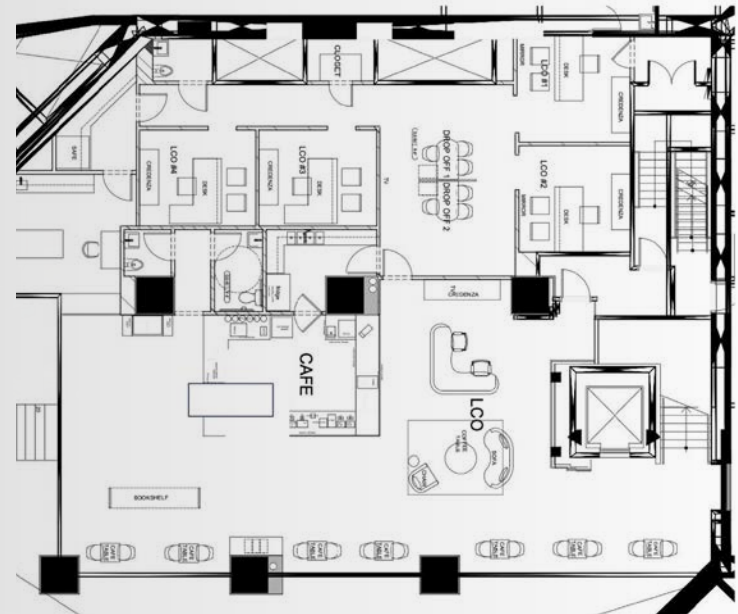




## First 7,660 SF



## Mezzanine 4,068 SF



# Area Demographics

Within 1 Mile

145K+

Average Household Income

116K+

Total Population

72K+

Total Households

## Neighboring Tenants

Gucci | Louis Vuitton | Chanel | Omega |  
 Marshall Pierce & Co. | Richard Mille |  
 Vacheron Constantin | BVLGARI |  
 Razny Jewelers



The Drake  
REAL CHICAGO

LV  
BREITLING  
DAVID YURMAN  
BVLGARI  
VACHERON CONSTANTIN  
OMEGA  
WESTIN

THE NORTH FACE  
BENIHANA  
jamba  
JOHN HANCOCK CENTER  
Starbucks  
The Cheesecake Factory

American Girl  
Auntie Anne's  
WOW BAO  
FOREVER 21  
WATER TOWER PLACE  
THE RITZ-CARLTON

HISTORIC WATER TOWER

WATER WORK VISITOR CENTER





**For more information,  
please contact**

**Anthony Campagni**

ac@canvasrealestate.com  
847.651.8669

**Elan Dasansky**

elan@canvasrealestate.com  
414.380.1555

**Jeremy Ezra**

jeremy.ezra@newmark.com  
212.351.9351