

# LAKEVIEW CONNECTION

LAST SPACE REMAINING  
JOIN AN EXCITING  
TENANT LINEUP



# PROPERTY HIGHLIGHTS

Exciting new commercial development situated in the vibrant Lakeview with prime Ground Floor retail space facing Belmont Avenue set for immediate occupancy.

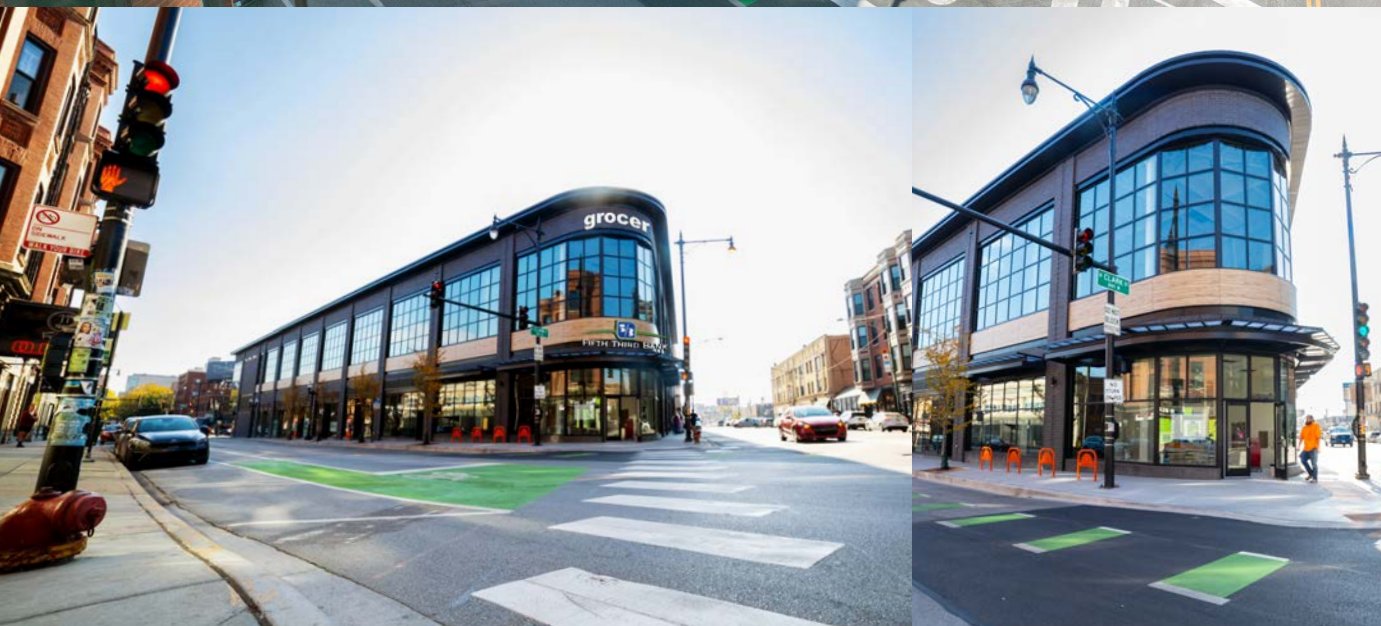
Future tenant will join Fifth Third Bank, a prominent national grocer and a national veterinary clinic.

Prominent grocer will occupy entire second level and a portion of the ground floor at the southwest corner of Halsted & Belmont.

Conveniently located steps away from the bustling Belmont "L" Super Station, serving over 4 million riders annually.

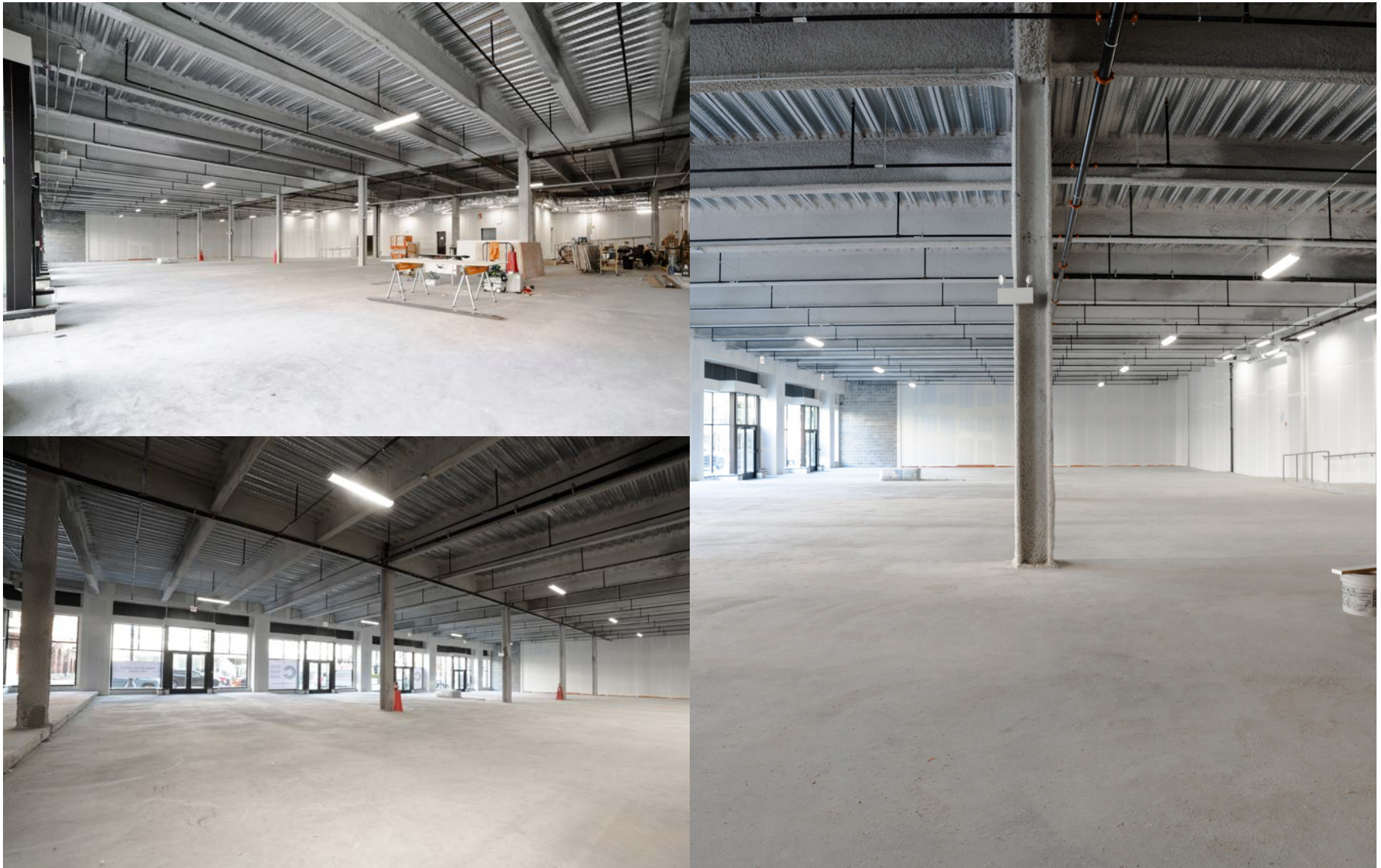
Within easy walking distance of Wrigley Field, attracting 2.2 million visitors each year.

Nearby tenants include Target, Walgreens, Michael's, Binny's, Chase, DSW, Marshalls, Petco, Advocate Illinois Masonic, Starbucks, Chipotle, Potbelly, Giordano's, Blaze Pizza, Taco Bell, Ann Sather and more.



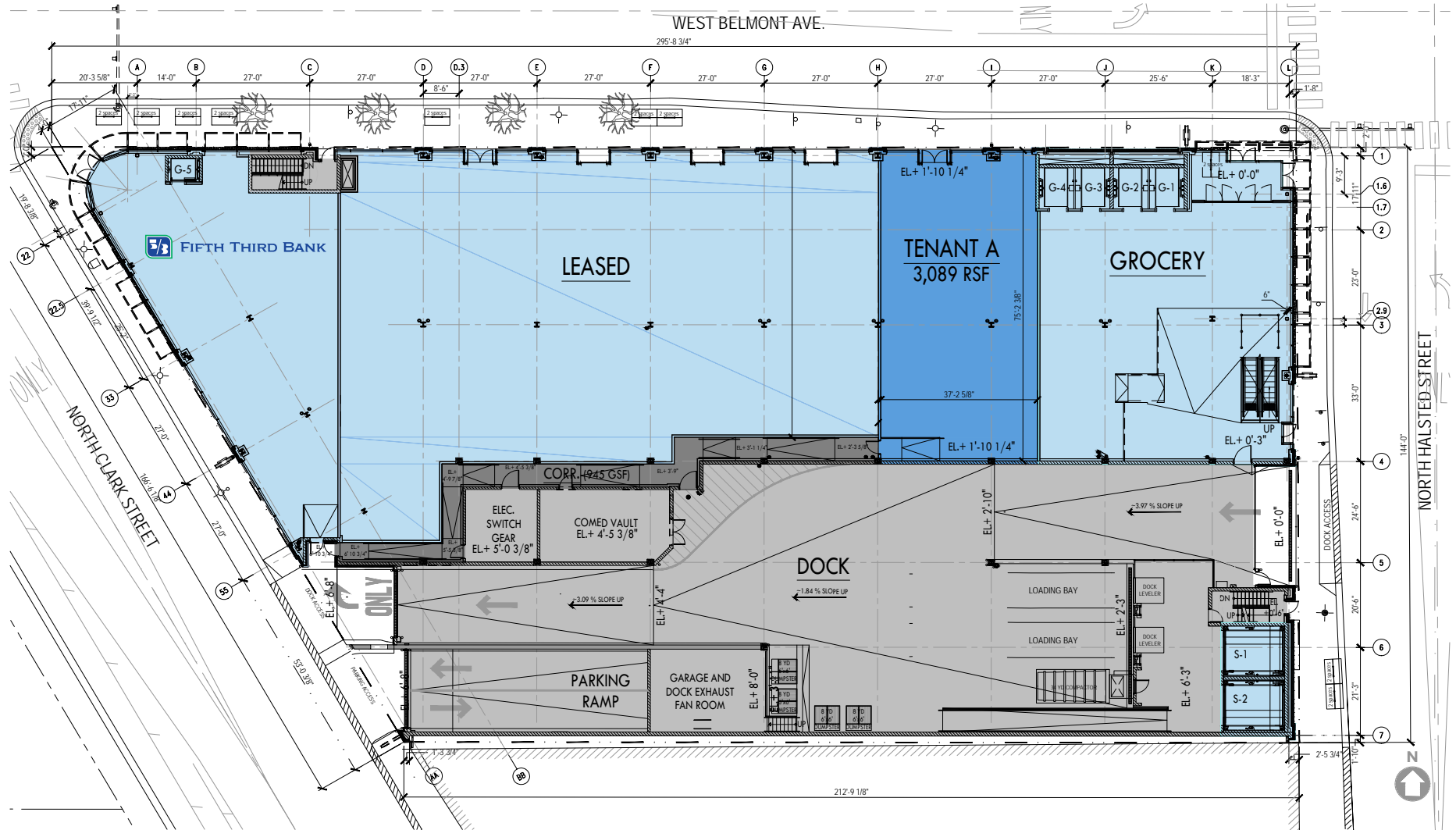
# INTERIOR PICTURES

SPACE AVAILABLE: 3,089 SF TENANT A  
FRONTAGE: 37'2" ON WEST BELMONT AVENUE



# GROUND FLOOR

SPACE AVAILABLE: 3,089 SF TENANT A  
FRONTAGE: 37'2" ON WEST BELMONT AVENUE





# DEMOGRAPHICS

WITHIN 1 MILE



AVG. HOUSEHOLD INCOME  
\$158,852



TOTAL POPULATION  
104,798



DAYTIME POPULATION  
78,072

# LAKEVIEW CONNECTION



## CONTACTS

ANTHONY CAMPAGNI  
ac@canvasrealestate.com  
847-651-8669

ANDREW BECKER  
abecker@canvasrealestate.com  
312-231-2600

ELAN RASANSKY  
elan@canvasrealestate.com  
414-380-1555

CANVAS