

PREMIER SECOND LEVEL
RUSH STREET RETAIL

1009 N. Rush St.
GOLD COAST - CHICAGO



CANVAS

GOLD COAST

Located at the East block of Rush
between Bellevue and Oak

HIGHLIGHTS

- Highly coveted Rush Street retail space in Chicago's Gold Coast.
- The second level provides a unique opportunity in an extremely high demand retail trade area.
- The second floor features 2,673 square feet of space.
- Surrounded by luxury and contemporary retailers and the highest volume restaurants in the city.

NEIGHBORHOOD RETAILERS

alice + olivia



ARC'TERYX



BALENCIAGA

Cartier

Dior

GIBSONS
RESTAURANT GROUP

HERMÈS
PARIS

lululemon
athletica

Madewell

PRADA

VERSACE

VUORI

DEMOGRAPHICS



108k+

Total Population
1 Mile



\$180k+

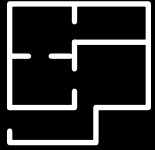
Average HH Income
1 Mile



189k+

Daytime Population
1 Mile

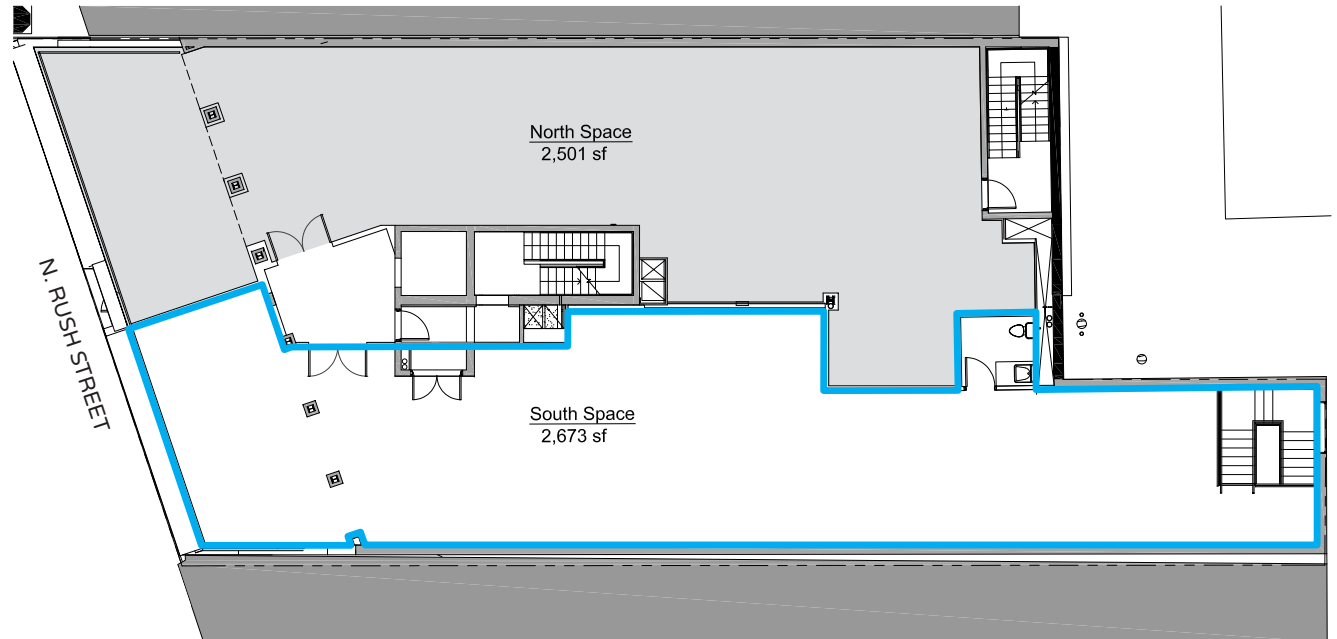
SPACE AVAILABLE



2,673 sf

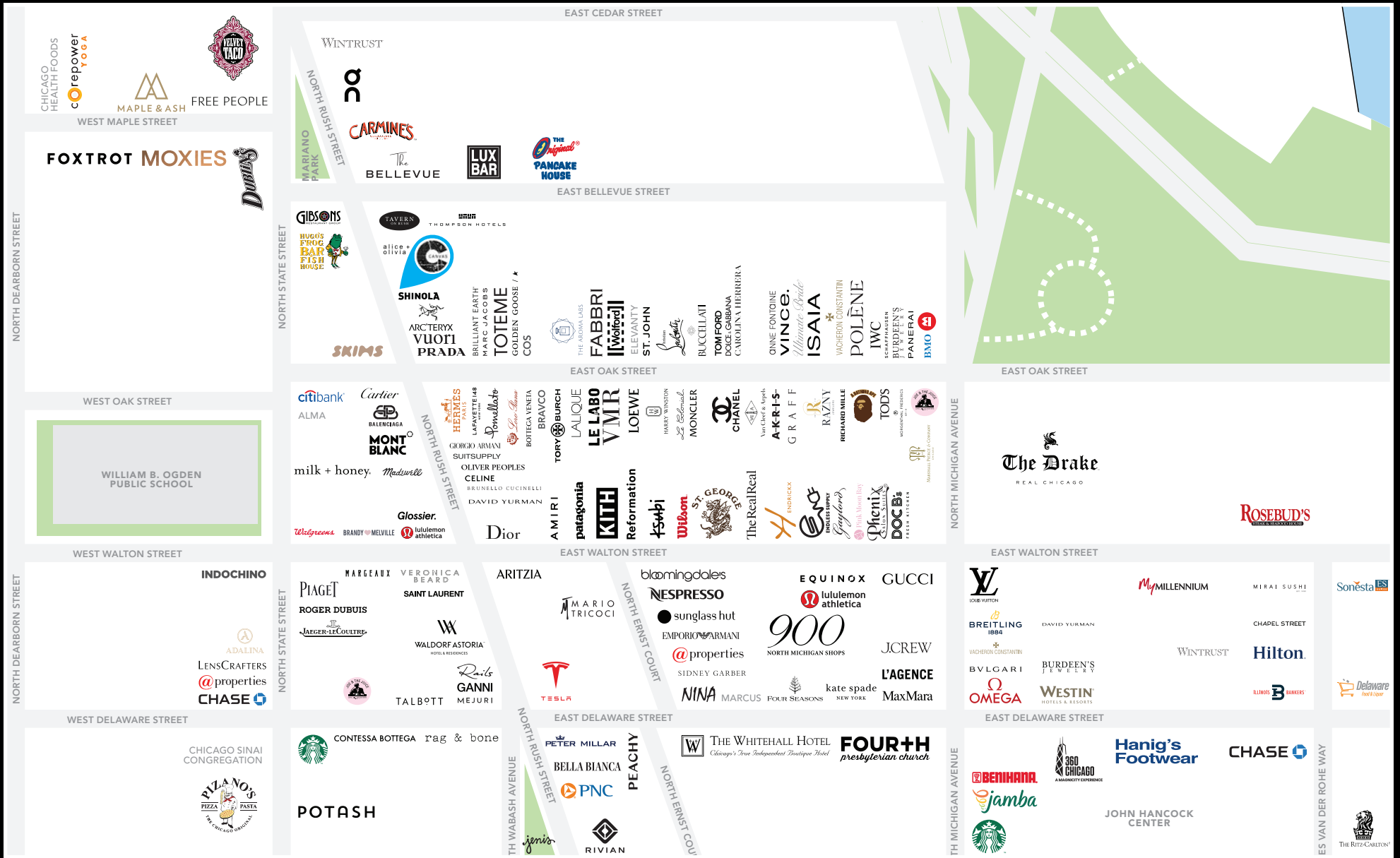
Second Level

SECOND LEVEL PLAN





CANVAS



FOR MORE INFORMATION, PLEASE CONTACT

ANDREW BECKER
 abecker@canvasrealestate.com
 312.231.2600

MICHAEL WEXLER
 mwexler@canvasrealestate.com
 773.426.1759

JOHN BASSI
 jbassi@canvasrealestate.com
 708.822.4583

2211 North Elston Avenue,
 Suite 307, Chicago
 www.canvasrealestate.com

CANVAS