



**1133 W. Fulton Market**  
CHICAGO, ILLINOIS

## Retail Space Available

South block of Fulton between  
May and Racine

**FOR MORE INFORMATION,  
PLEASE CONTACT**

**JOHN BASSI**

[jbassi@canvasrealestate.com](mailto:jbassi@canvasrealestate.com)  
708.822.4583

**ANDREW BECKER**

[abecker@canvasrealestate.com](mailto:abecker@canvasrealestate.com)  
312.231.2600

**MICHAEL WEXLER**

[mwexler@canvasrealestate.com](mailto:mwexler@canvasrealestate.com)  
773.426.1759



## DEMOGRAPHICS



**64.4k+**

Total Population  
1 Mile

14.6k+  
0.5 Miles

1.13k+  
0.25 Miles



**\$185k+**

Average HH Income  
1 Mile

\$196k+  
0.5 Miles

\$197k+  
0.25 Miles



**141k+**

Daytime Population  
1 Mile

26.7k+  
0.5 Miles

8.82k+  
0.25 Miles

### FULTON MARKET

- Canvas Real Estate is pleased to present a phenomenal retail/ restaurant leasing opportunity in Chicago's exciting Fulton Market neighborhood. 1133 W. Fulton is one of the last remaining vintage brick and timber Fulton Market buildings.
- The space totals approximately 10,000 sf spread over four +/- 2,500 sf bays. The spaces can be combined.
- With a new sidewalk and ADA accessible ramp, the retail spaces present a unique opportunity for a large outdoor area fronting both Fulton and May.
- The office space is fully leased to Kimberly-Clark.

### NEIGHBORING RETAILERS

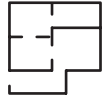
Patagonia, Fjall Raven, Sancere Hospitality, Herman Miller, Eleven Eleven, Ricardo Osteria, Estereo, Swift & Sons, Aviary, Next, Roister



CANVAS

# FLOOR PLAN

## SPACE AVAILABLE

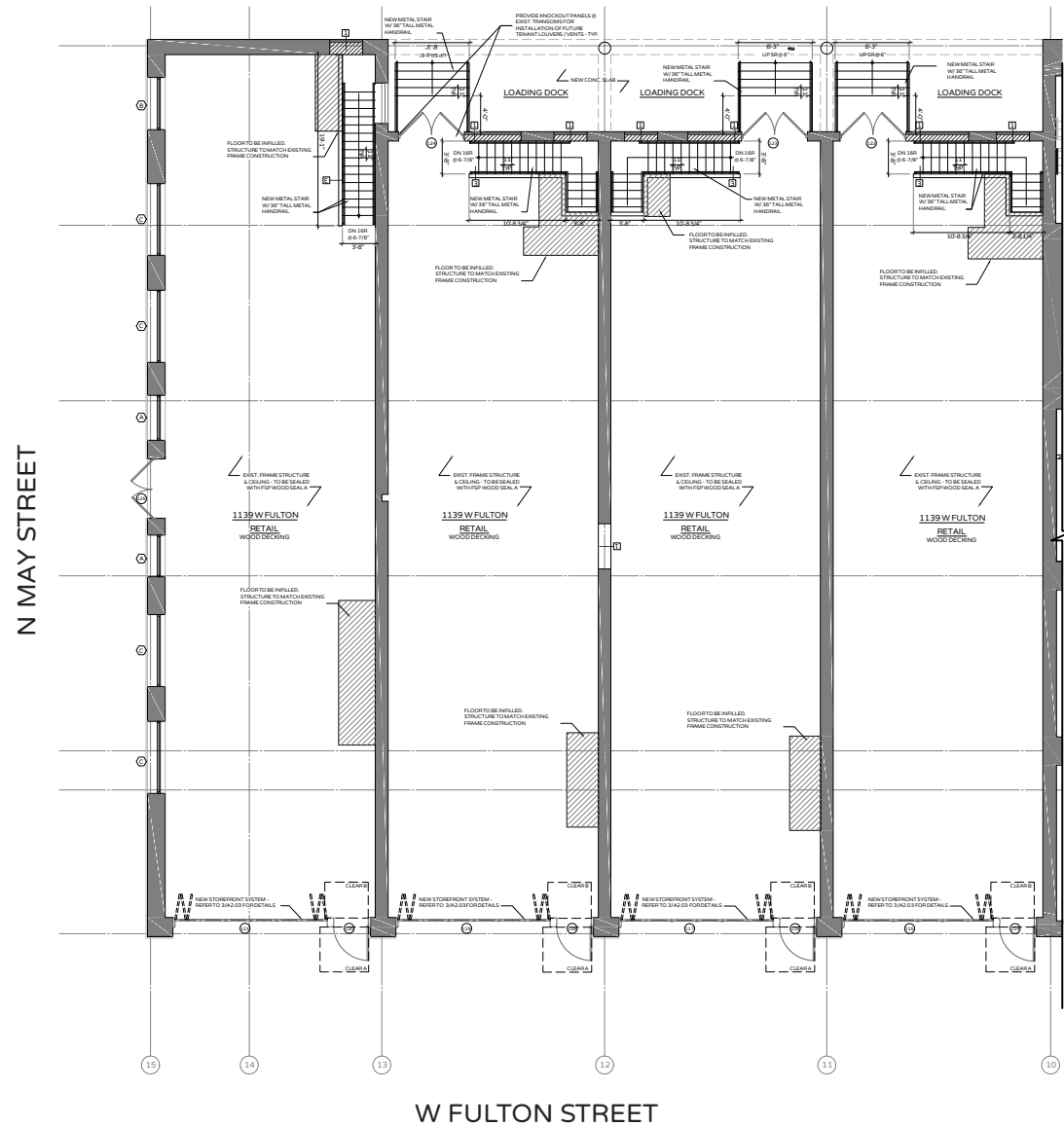


+/- **10,000 sqft**

Each existing bay is approximately 2,500 SQFT

Building is structurally sound and can combine multiple or all bays if desired.

## Ground Level



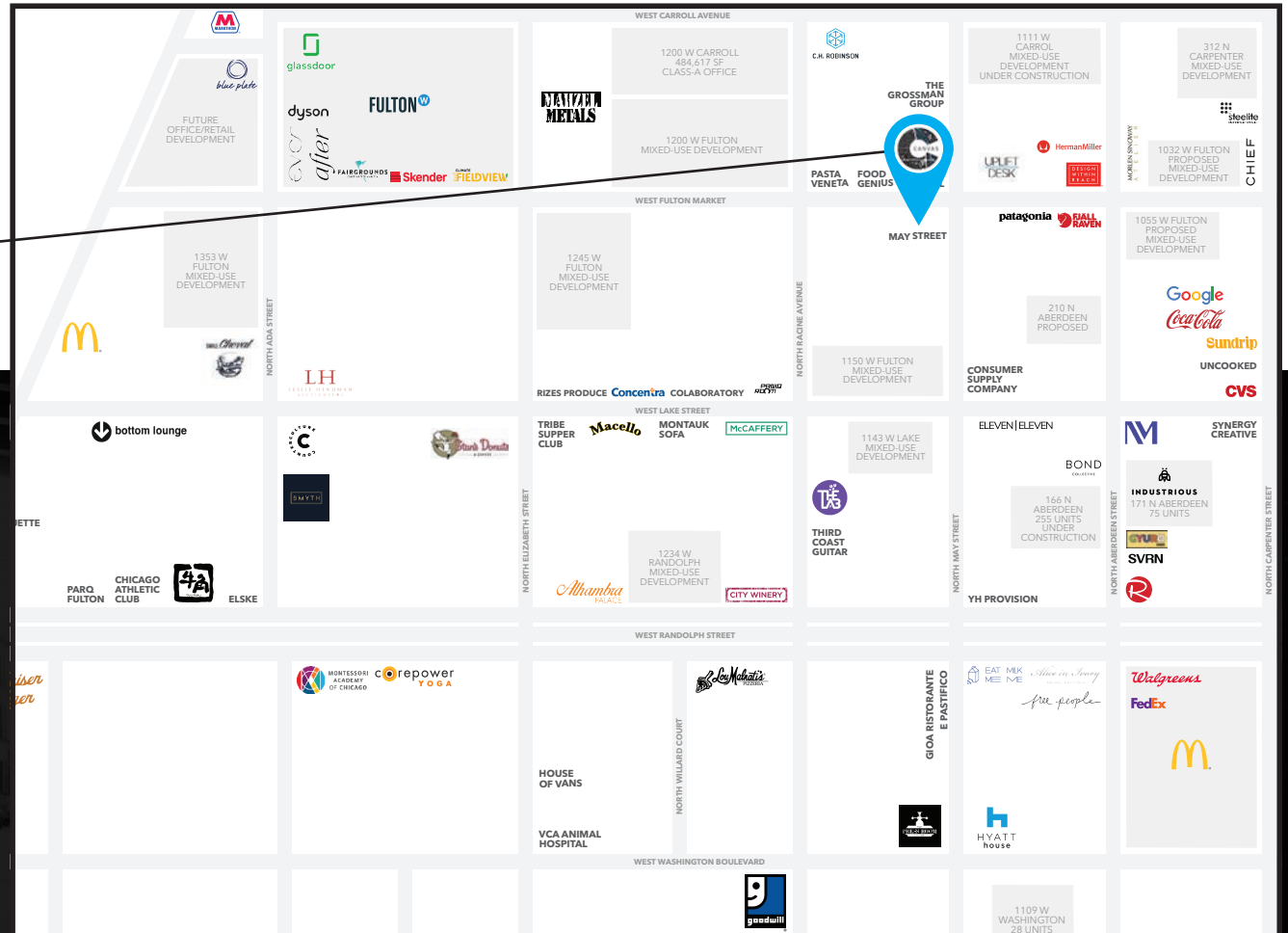
# CANVAS



# STREET MAP

**1133 W. Fulton Market**  
CHICAGO, ILLINOIS

**SPACE AVAILABLE**



**FOR MORE INFORMATION,  
PLEASE CONTACT**

**JOHN BASSI**

[jbassi@canvasrealestate.com](mailto:jbassi@canvasrealestate.com)

708.822.4583

**ANDREW BECKER**

[abecker@canvasrealestate.com](mailto:abecker@canvasrealestate.com)

312.231.2600

**MICHAEL WEXLER**

[mwexler@canvasrealestate.com](mailto:mwexler@canvasrealestate.com)

773.426.1759



**CANVAS**