

Your Sign Here



**330 N. Clark Street**  
CHICAGO, ILLINOIS

**Retail/Showroom/Restaurant Space Available**  
South block of Carroll between LaSalle & Clark

FOR MORE INFORMATION,  
PLEASE CONTACT

ANTHONY CAMPAGNI  
ac@canvasrealestate.com  
847.651.8669

ELAN RASANSKY  
elan@canvasrealestate.com  
414.380.1555

## DEMOGRAPHICS



**118k+**

Total Population  
1 Mile

29.9k+      5.29k+  
0.5 Miles    0.25 Miles



**\$186k+**

Average HH Income  
1 Mile

\$199k+      \$184k+  
0.5 Miles    0.25 Miles



**574k+**

Daytime Population  
1 Mile

238k+      67.7k+  
0.5 Miles    0.25 Miles



## RIVER NORTH

Introducing Monarch Collective, a comprehensive space of like-minded designers, artists, purveyors and entrepreneurs.

Monarch Collective is an expansive 15,000 SF space located on the ground floor of the historic Reid Murdoch building in the heart of Chicago's preeminent River North neighborhood. The sprawling space, anchored by the Golden Triangle, offers flexible move-in ready conditions for a variety of proprietors in food & beverage, furnishings, jewelry, textiles, fashion, and more, all under one roof in an eclectic retail setting. The Monarch name, a nod to Monarch Food distributed from the Reid Murdoch & Co. throughout the 1900s, is deeply rooted in River North history, adding to the allure of Monarch Collective. Each curated space with the Collective taps into the unparalleled exposure, culture, and energy that only River North and downtown Chicago offer.

Reid Murdoch serves as a testament to adaptive reuse, offering functional modern spaces for office and retail tenants, while advancing the vision of the Riverfront. The building seven's floors of office space with retail tenants on the first floor, capped by the building's distinctive, four-sided clock tower. The multi-level river walk provides a scenic public passageway, outdoor dining, events, and a water taxi stop. The building is a designated Chicago landmark and is listed on the National Register of Historic Places.

# FLOOR PLAN

## SPACE AVAILABLE

Approx.

**15,351 sqft**

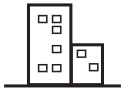
Ground Level



## FRONTAGE

**81'10"**

on N. Clark Street



**172'3"**

on W. Carroll Avenue



## CEILING HEIGHT

**15'-3"**

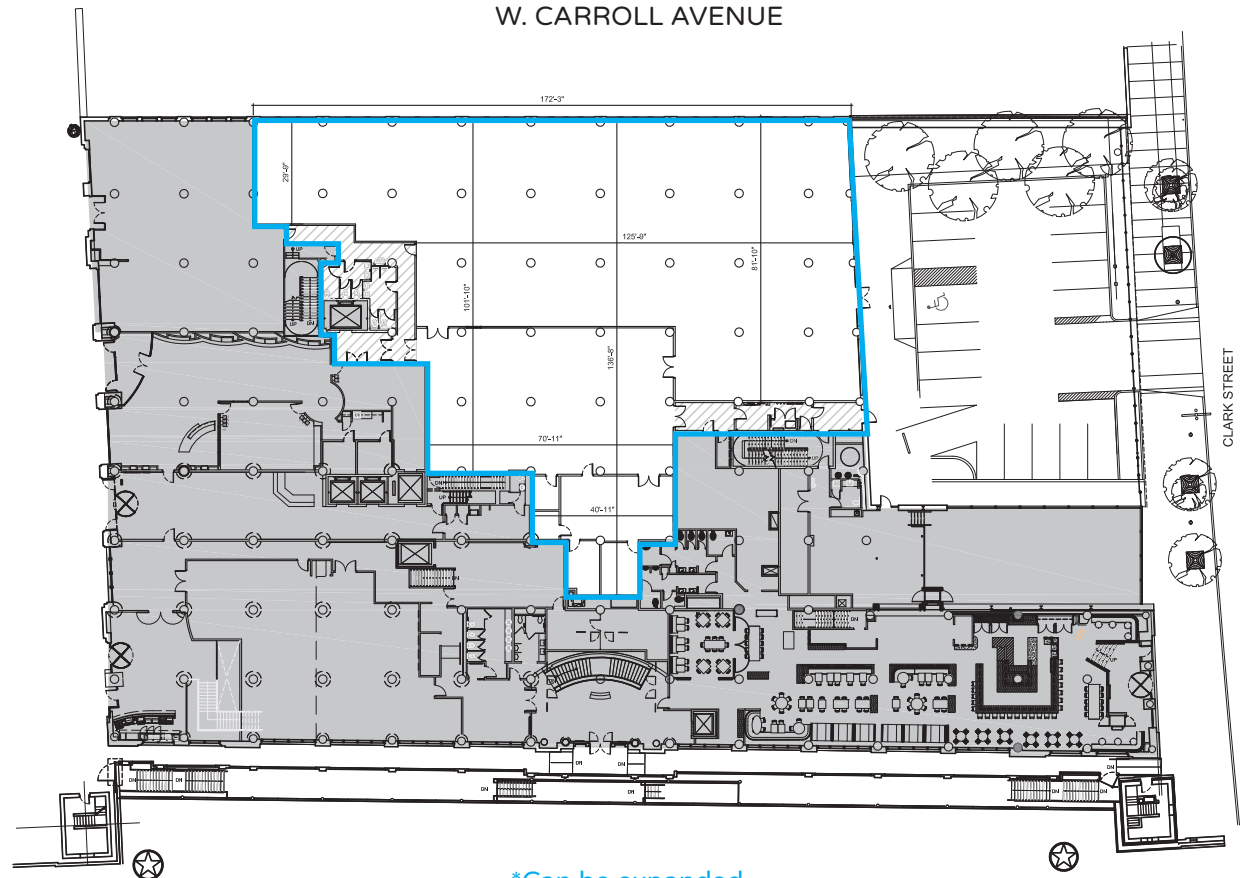
Ground Level



## PARKING SPACE

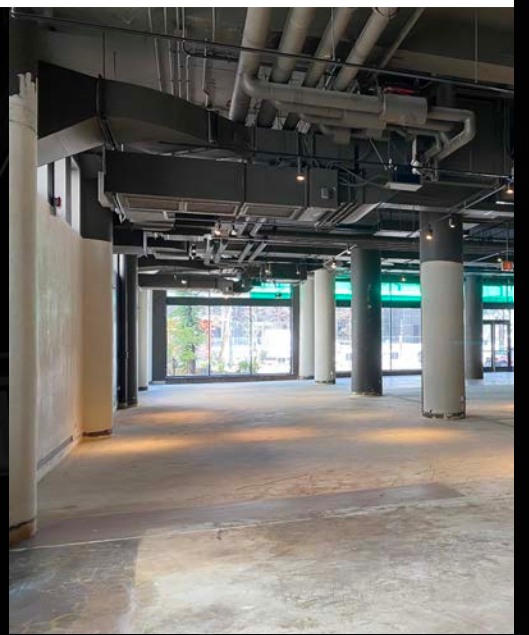
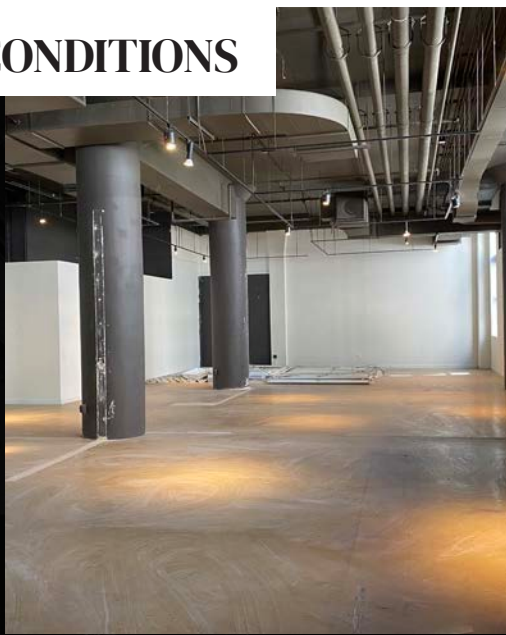
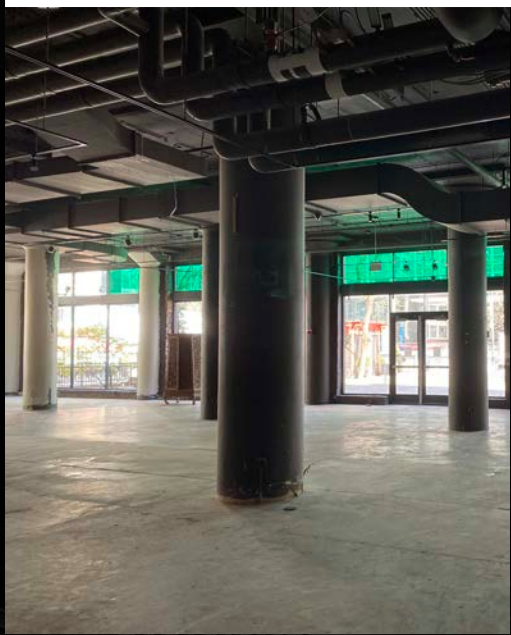
**18**

Dedicated Surface



\*Can be expanded  
for up to 19,007 SF

EXISTING CONDITIONS

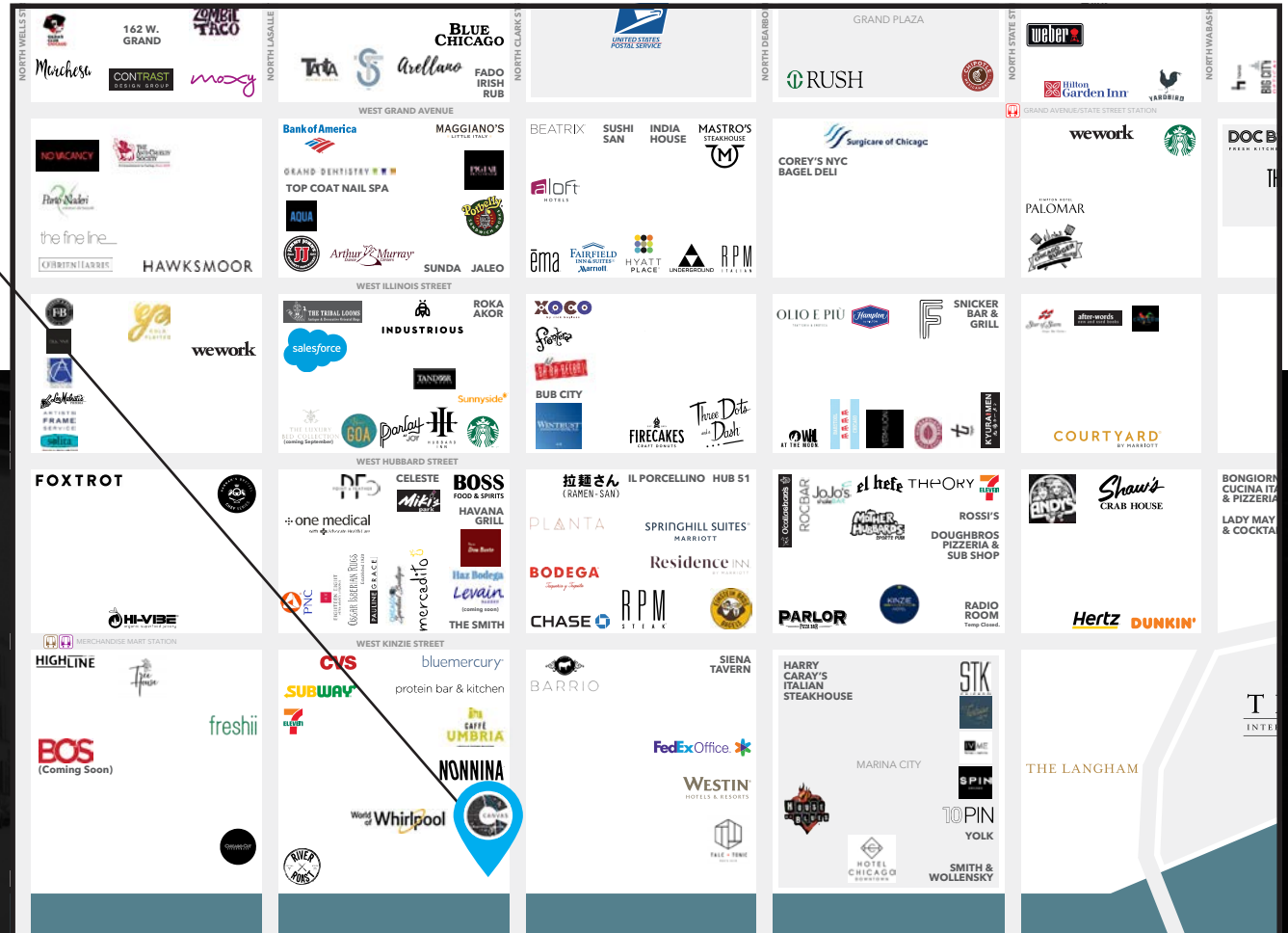


CANVAS

# STREET MAP

330 N. Clark Street  
CHICAGO, ILLINOIS

SPACE AVAILABLE



FOR MORE INFORMATION,  
PLEASE CONTACT

ANTHONY CAMPAGNI  
ac@canvasrealestate.com  
847.651.8669

ELAN RASANSKY  
elan@canvasrealestate.com  
414.380.1555

