



Bally's
NOW OPEN



601-23 N. State Street
CHICAGO, ILLINOIS

Retail Space Available

East block of State between Ohio and Ontario

FOR MORE INFORMATION,
PLEASE CONTACT

ANTHONY CAMPAGNI
ac@canvasrealestate.com
847.651.8669

ELAN RASANSKY
elan@canvasrealestate.com
414.380.1555

DEMOGRAPHICS



120k+

Total Population
1 Mile

41.3k+ 10.7k+
0.5 Miles 0.25 Miles



\$185k+

Average HH Income
1 Mile

\$176k+ \$179k+
0.5 Miles 0.25 Miles



472k+

Daytime Population
1 Mile

141k+ 28.3k+
0.5 Miles 0.25 Miles



RIVER NORTH

The Retail at Tree Studios is ideally situated on the east block between East Ohio and East Ontario Streets in Chicago's thriving River North neighborhood.

The Queen Anne-style landmark property is part of the rich history of the Tree Studios and Annexes, originally established as an art colony in 1894. Today, it is a distinctive retail and office destination.

The Tree Studios Building and Annexes, with its outstanding visibility and robust foot traffic, is located in the heart of River North, capturing the pulse of the neighborhood.

The area is characterized by an abundance of high-volume restaurants and prominent retailers, and has experienced tremendous growth over the last decade due to an expanded residential population and increased tourism.

The neighborhood is home to the country's top-grossing Nordstrom, Eataly's new 65,000-square-foot Chicago flagship, the first-to-market Shake Shack, and a number of the city's premier hotels and favorite dining options.

Recently opened Bally's Chicago is home to Chicago's first casino and consists of approximately 130,000sf.

CANVAS

SITE PLANS

Space Attributes

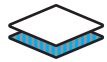
- 14 ft. vaulted ceilings
- Hardwood floors
- Great natural light

619 N. State



1,040 sqft

Ground Level



551 sqft

Concourse Level



Total

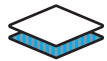
1,591 sqft

611 N. State



1,120 sqft

Ground Level



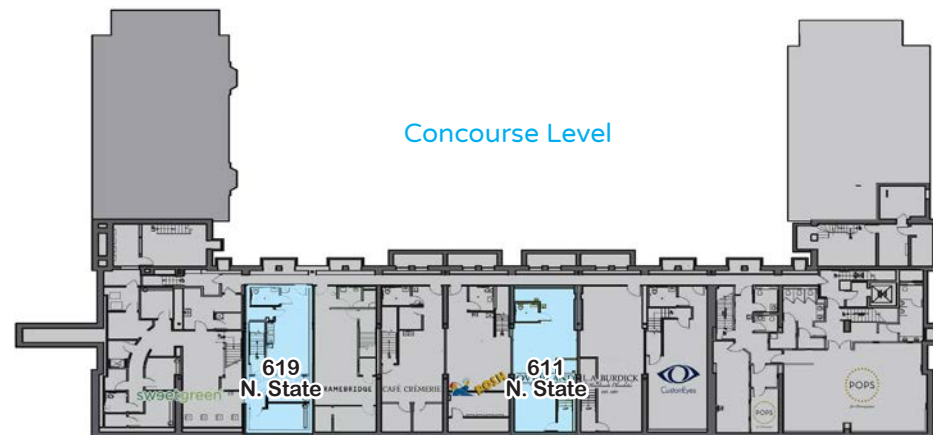
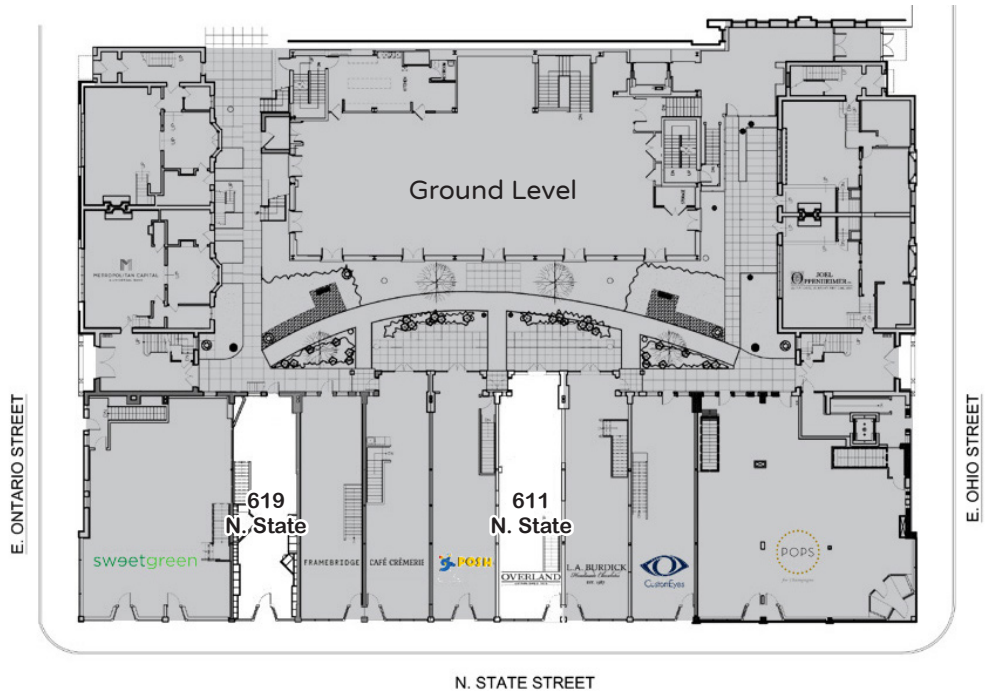
933 sqft

Concourse Level



Total

2,053 sqft



CANVAS



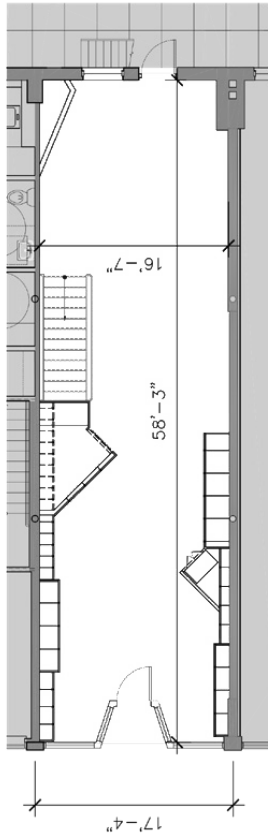
FLOOR PLANS

619 N. State



1,040 sqft

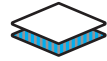
Ground Level



FRONTAGE

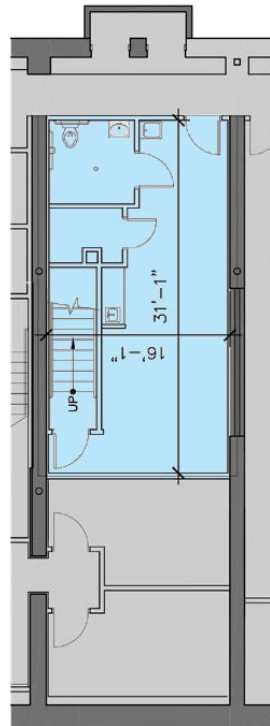
17'-4"

on N. State Street



551 sqft

Concourse Level

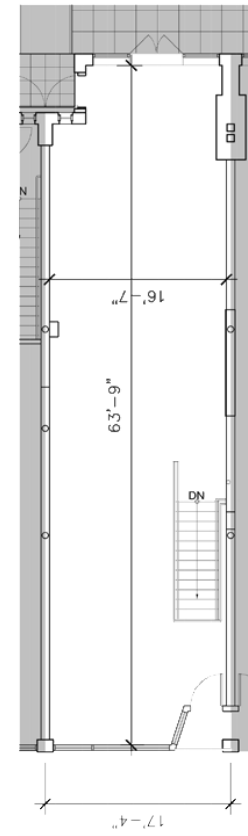


611 N. State



1,120 sqft

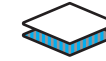
Ground Level



FRONTAGE

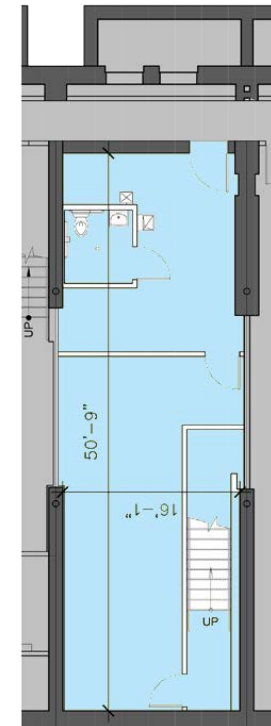
17'-4"

on N. State Street



933 sqft

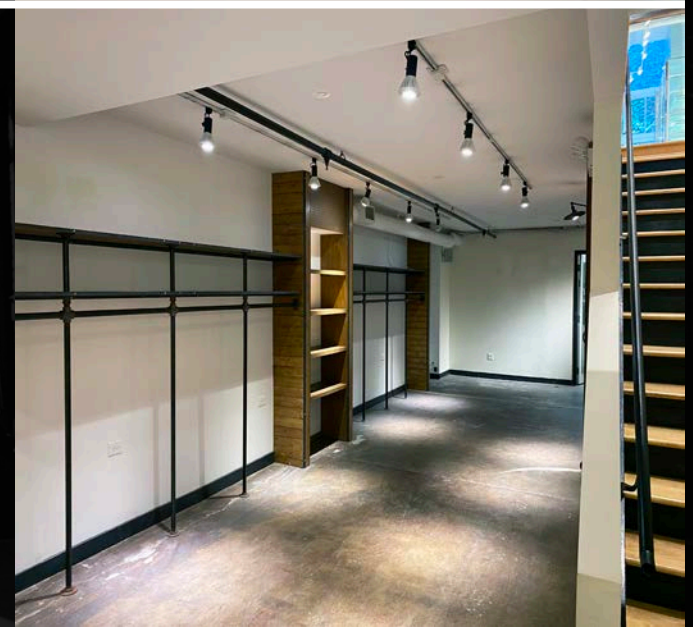
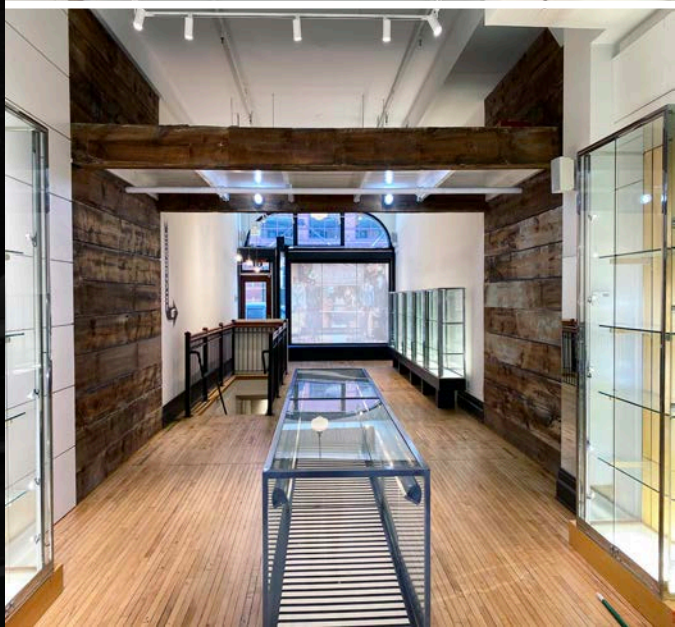
Concourse Level



619 N. State



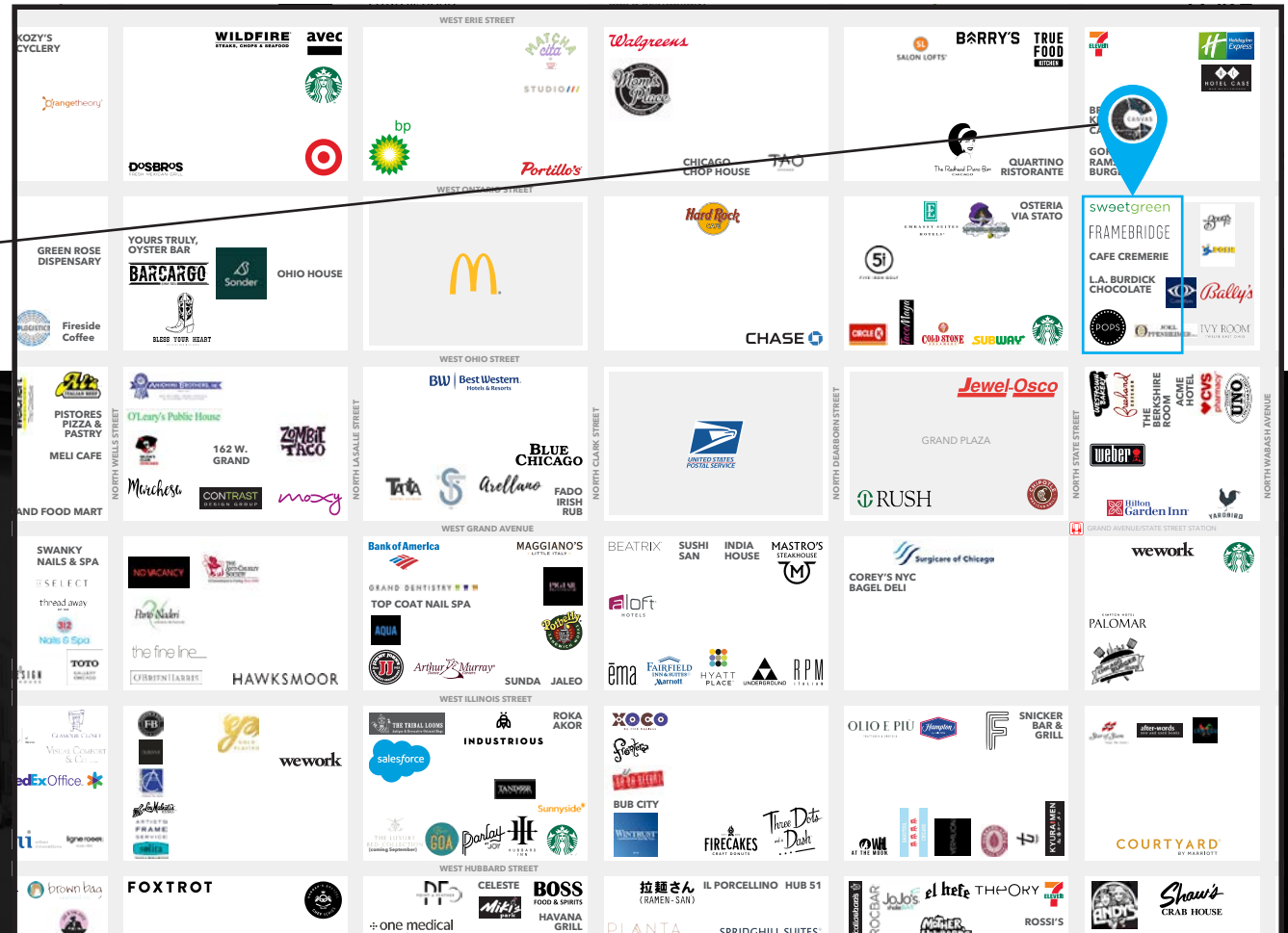
611 N. State



STREET MAP

601-23 N. State Street
CHICAGO, ILLINOIS

SPACE AVAILABLE



FOR MORE INFORMATION,
PLEASE CONTACT

ANTHONY CAMPAGNI
ac@canvasrealestate.com
847.651.8669

ELAN RASANSKY
elan@canvasrealestate.com
414.380.1555



CANVAS