



NEC Touhy & Linder Avenue

SKOKIE, ILLINOIS

Retail and Ground Lease Opportunities Available For Lease
 Northeast corner of Touhy & Linder

FOR MORE INFORMATION,
 PLEASE CONTACT

ANTHONY CAMPAGNI
 ac@canvasrealestate.com
 847.651.8669

ELAN RASANSKY
 elan@canvasrealestate.com
 414.380.1555

DEMOGRAPHICS



701k+

Total Population
5 Miles

176k+
3 Miles

14.5k+
1 Mile



\$106k+

Average HH Income
5 Miles

\$108k+
3 Miles

\$129k+
1 Mile



297k+

Daytime Population
5 Miles

109k+
3 Miles

8.5k+
1 Mile

SKOKIE

- This property is strategically located at the NEC of Touhy Avenue (39,000 ADT) and Linder Avenue in Skokie, IL.
- This property enjoys great visibility to Touhy Avenue and is easily accessible via a lighted signalized curb cut.
- This site sits in the shadow of nearly 1 million square feet of retail space and enjoys synergy with tenants such as Walmart, Best Buy, Barnes and Noble, AMC Theaters, Buffalo Wild Wings, Chipotle, Chili's and Panera.

NEIGHBORING TENANTS

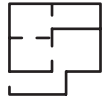
Barnes & Noble, Best Buy, Chase Bank, Chick-fil-a, Chili's Grill & Bar, McDonald's, Outback Steakhouse, Panera, ULTA, Walgreens, Walmart and many more!



CANVAS

SITE PLAN

SPACE AVAILABLE



48,000 sqft

Rear Pad



In Lease

Space 1



In Lease

Space 2



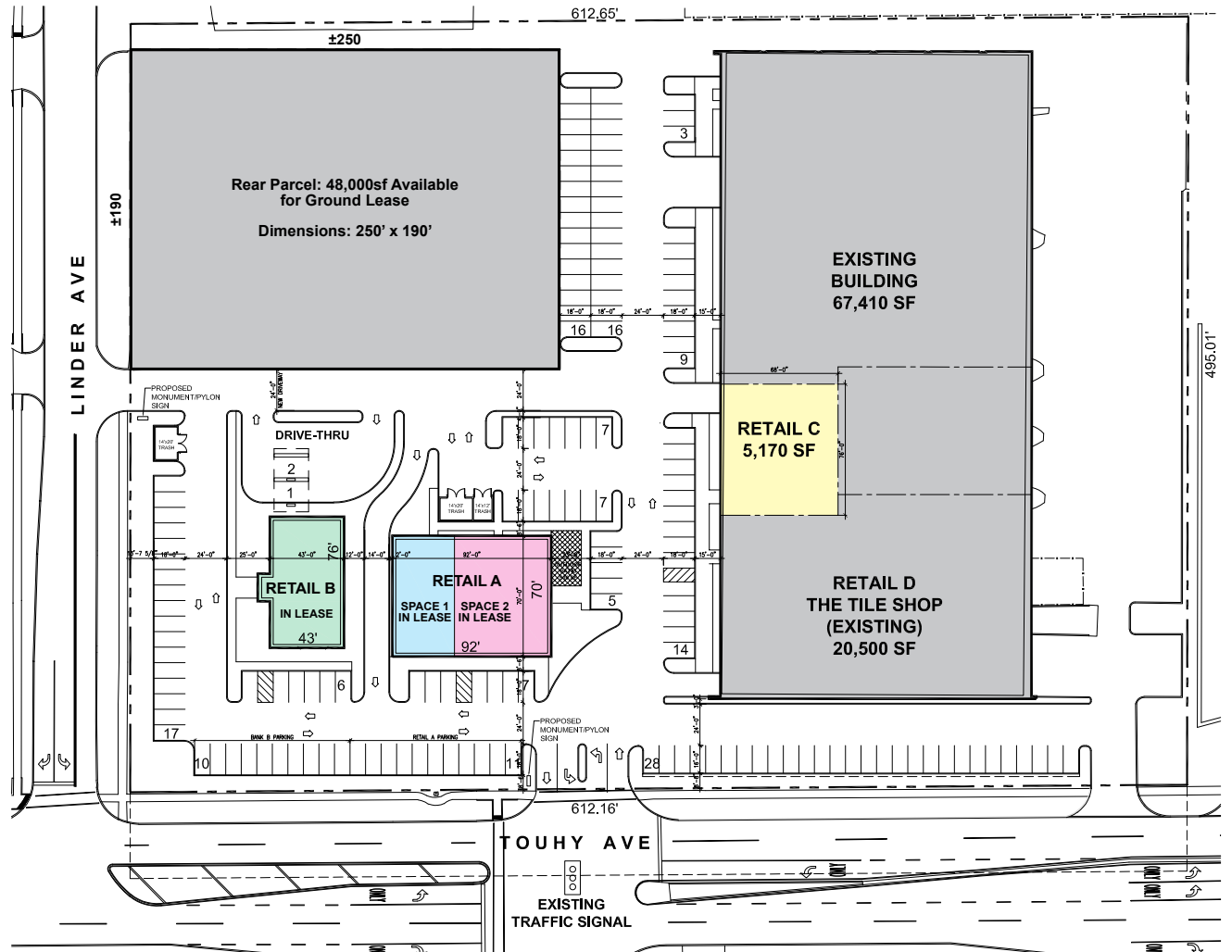
In Lease

Retail B



5,170 sqft

Retail C



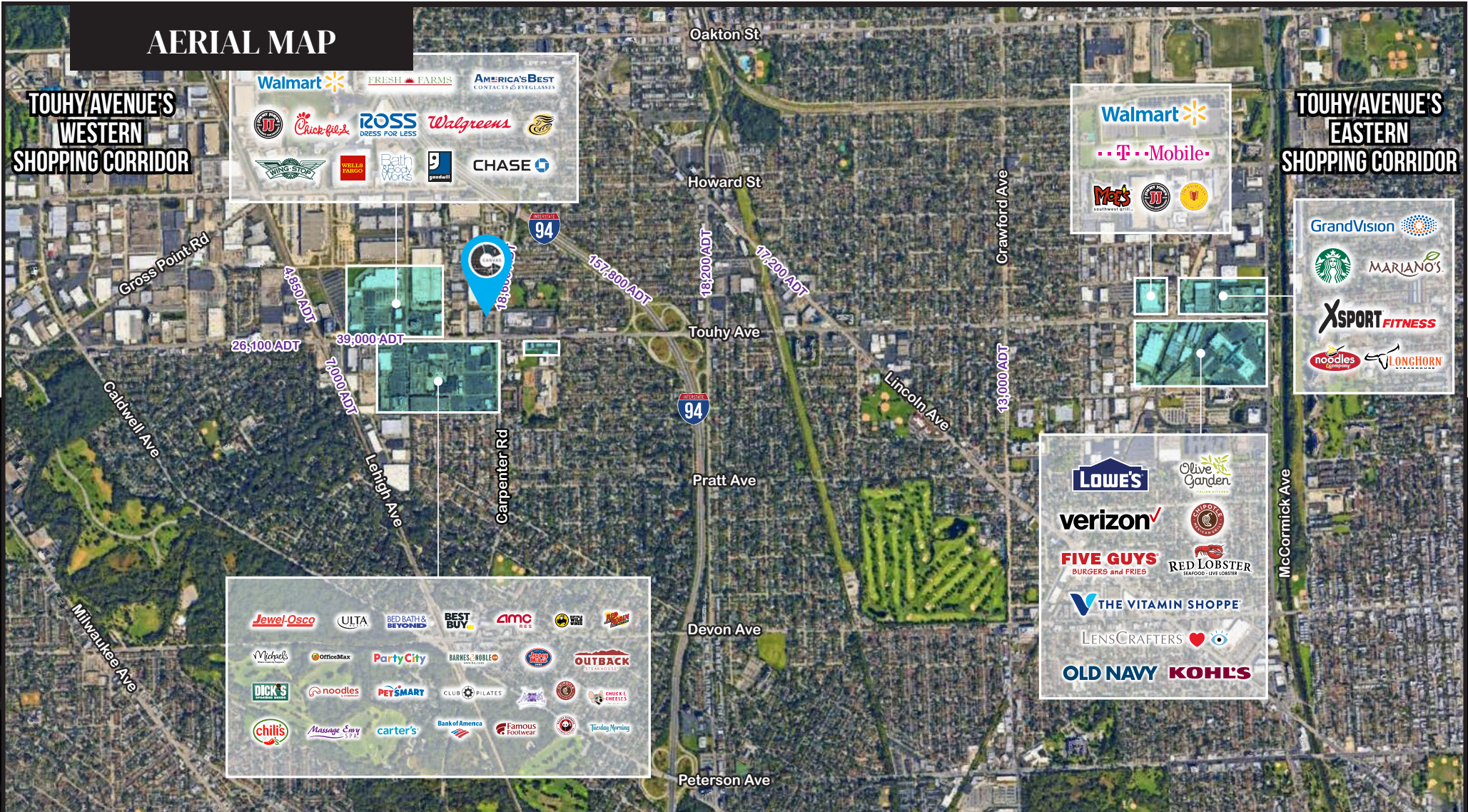
CANVAS



AERIAL MAP

**TOUHY/AVENUE'S
WESTERN
SHOPPING CORRIDOR**

**TOUHY/AVENUE'S
EASTERN
SHOPPING CORRIDOR**



FOR MORE INFORMATION,
PLEASE CONTACT

ANTHONY CAMPAGNI
ac@canvasrealestate.com
847.651.8669

ELAN RASANSKY
elan@canvasrealestate.com
414.380.1555



CANVAS