

5253-5255 N. Clark Street
CHICAGO, ILLINOIS

Retail/Restaurant Space Available
Southeast corner of Clark and Berwyn

FOR MORE INFORMATION,
PLEASE CONTACT

ANTHONY CAMPAGNI
ac@canvasrealestate.com
847.651.8669

ELAN RASANSKY
elan@canvasrealestate.com
414.380.1555

DEMOGRAPHICS



77.1k+

Total Population
1 Mile

15.9k+ 4.47k+
0.5 Miles 0.25 Miles



\$108k+

Average HH Income
1 Mile

\$142k+ \$156k+
0.5 Miles 0.25 Miles



53.9k+

Daytime Population
1 Mile

12.7k+ 3.66k+
0.5 Miles 0.25 Miles



ANDERSONVILLE

- Ground level retail / restaurant space located at the hard corner of North Clark Street and West Berwyn Avenue
- Formerly Reza's Restaurant & Andie's Café Mediterraneo
- Landlord delivering vanilla box space with new storefronts along Clark Street and Berwyn Avenue
- Opportunity for restaurant venting

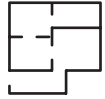
NEIGHBORING RETAILERS

Starbucks, Sweetgreen, Jeni's Ice Cream, Warby Parker, Potbelly, Ranalli's, Big City Optical, Lost Larsen, Lady Gregory's Restaurant, Pizza Lobo, Kanela and many more.

CANVAS

FLOOR PLANS - 5255 N. Clark

SPACE AVAILABLE



3,000 sqft

Space A



3,080 sqft

Leased to Dentologie

FRONTAGE



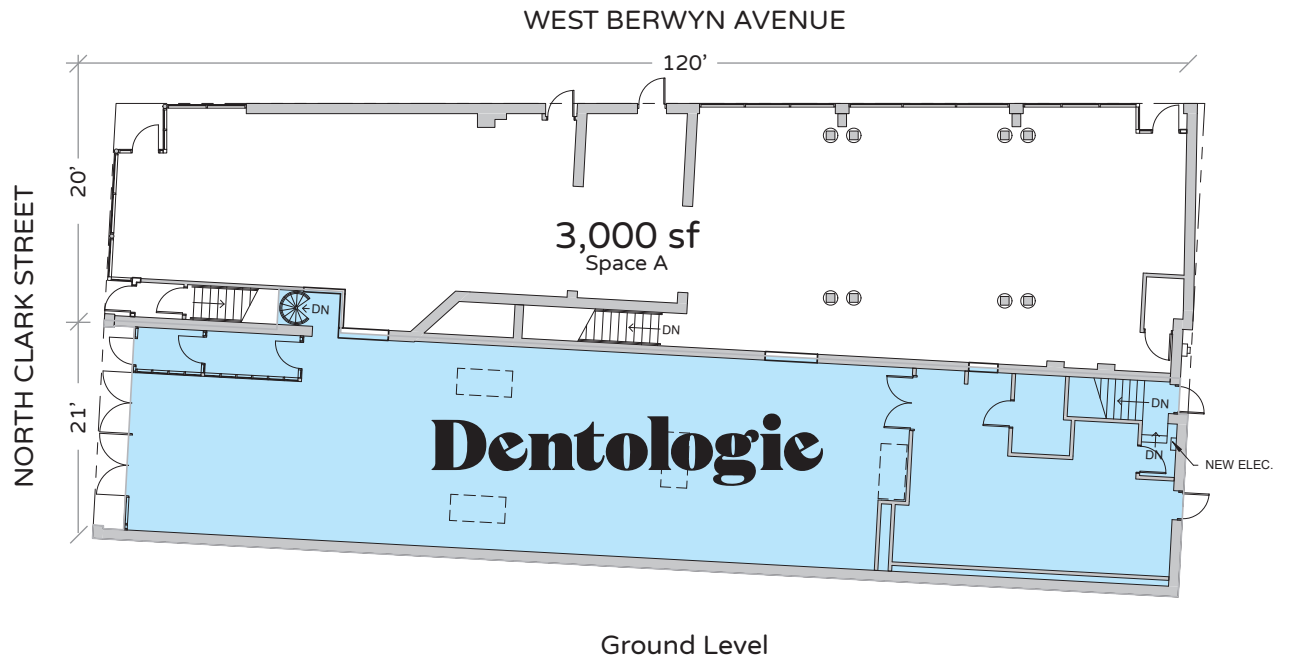
120'

Space A on W. Berwyn Avenue



20'

Space A on N. Clark Street



CANVAS



FLOOR PLANS - 5253 N. Clark

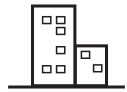
SPACE AVAILABLE



4,500 sqft

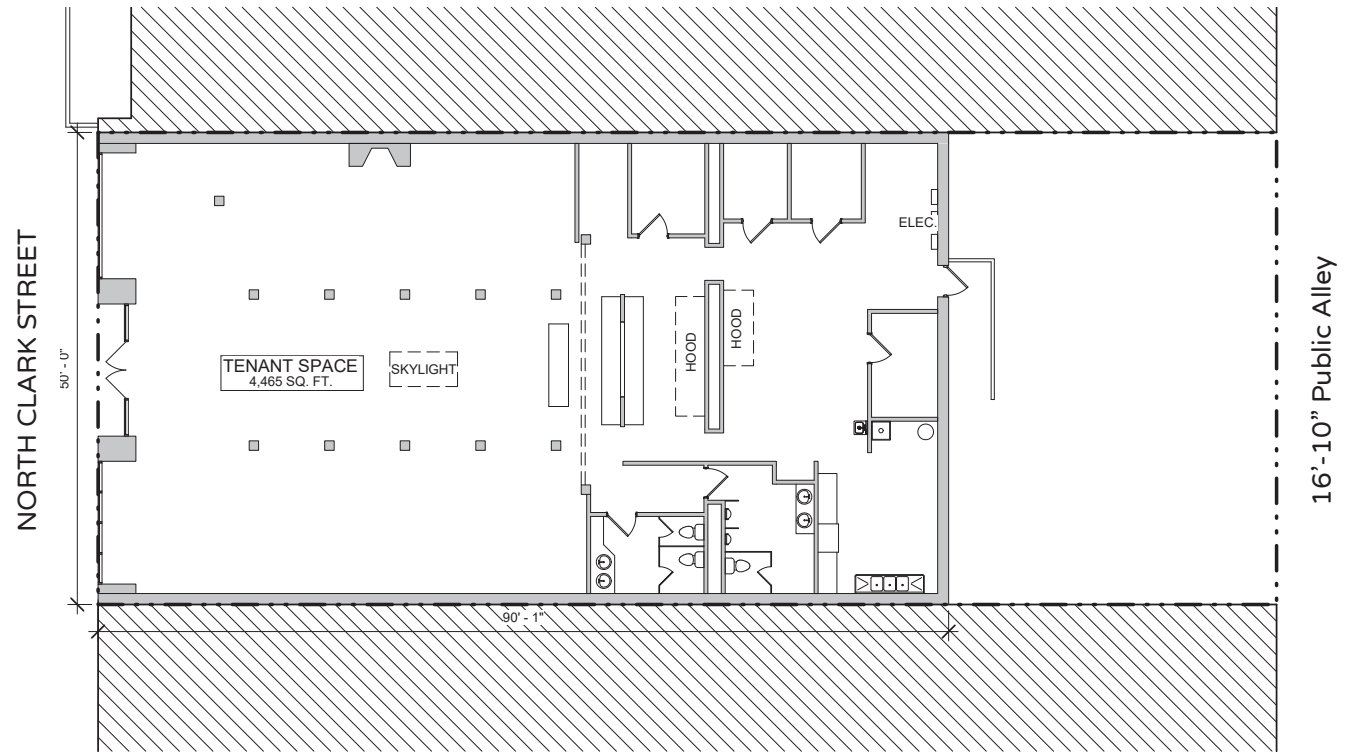
Ground Level (Divisible)

FRONTAGE



50'

on N. Clark Street

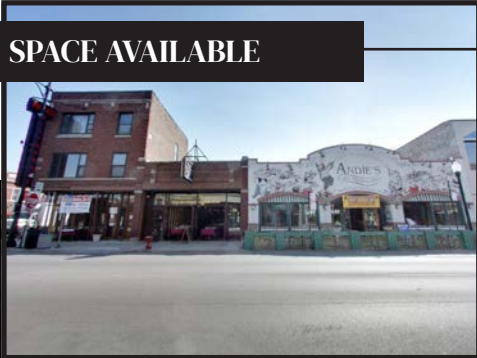


CANVAS

STREET MAP

5253-5255 N. Clark Street
CHICAGO, ILLINOIS

SPACE AVAILABLE



FOR MORE INFORMATION,
PLEASE CONTACT

ANTHONY CAMPAGNI

ac@canvasrealestate.com

847.651.8669

ELAN RASANSKY

elan@canvasrealestate.com

414.380.1555

CANVAS

