



188 W. Washington

CHICAGO, ILLINOIS

Retail Space for Lease

Northeast corner of Washington and Wells

FOR MORE INFORMATION,
PLEASE CONTACT

ANDREW BECKER

abecker@canvasrealestate.com

312.231.2600

DEMOGRAPHICS



67.9k+

Total Population
1 Mile

13.9k+ 6.26k+
0.5 Miles 0.25 Miles



\$170k+

Average HH Income
1 Mile

\$205k+ \$211k+
0.5 Miles 0.25 Miles



91.3k+

Daytime Population
1 Mile

14.7k+ 3.40k+
0.5 Miles 0.25 Miles



LOOP

- The subject property is located at the northeast corner of Washington Street and Wells Street in the heart of Chicago's CBD, the "Loop"
- The single level, freestanding retail building presents an extremely rare branding opportunity in this dense, urban, high rise environment
- Incredible daytime population and highly visible to morning and evening commuter traffic
- The space is ideal for small shop tenants seeking a presence in the "Loop"
- Area co-tenants include CVS, GRK Kitchen, Potbelly, ROTI, Protein Bar, Chipotle, Mojo Coffee, Jimmy John's, Starbucks, Randolph Tavern, City Social Kitchen & Bar, Qdoba and Naf Naf Grill

CANVAS

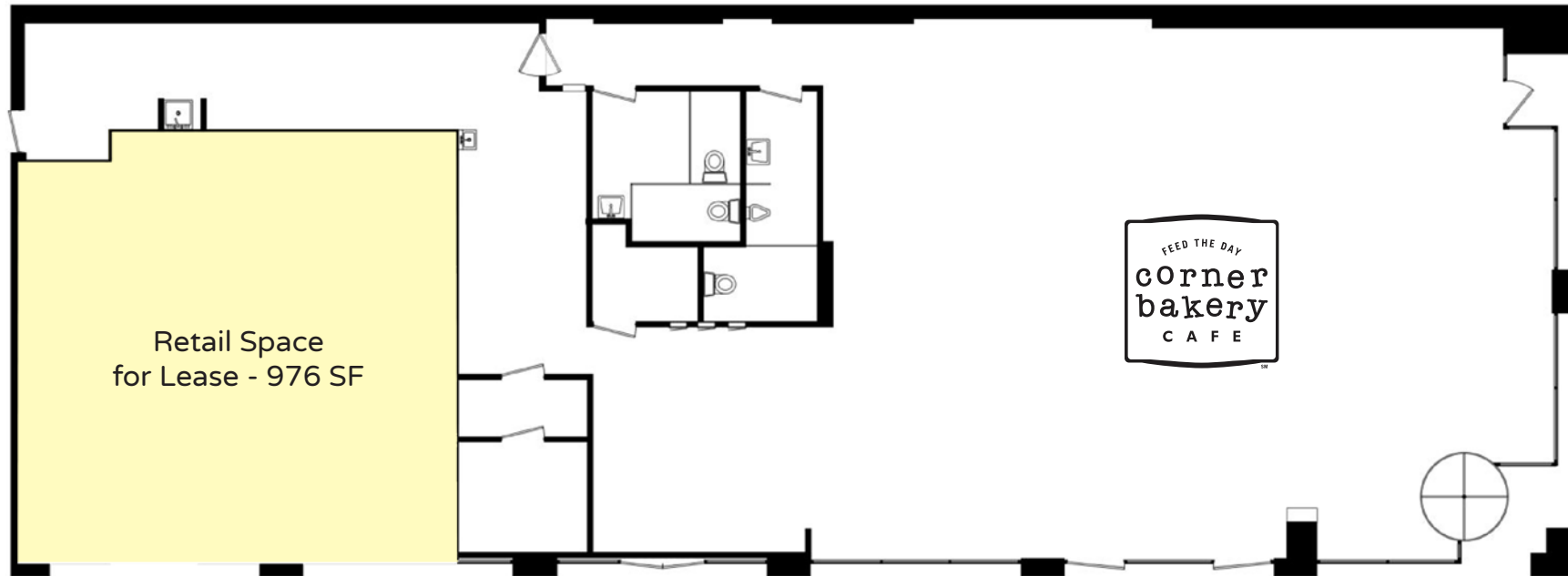
FLOOR PLAN

SPACE AVAILABLE



+/- **976** sqft

Ground Level



NORTH WELLS STREET

WEST WASHINGTON STREET

CANVAS



STREET MAP

188 W. Washington
CHICAGO, ILLINOIS

SPACE FOR LEASE



FOR MORE INFORMATION,
PLEASE CONTACT

ANDREW BECKER
abecker@canvasrealestate.com
312.231.2600

CANVAS

