



# 2036 S. Michigan Avenue

## CHICAGO, ILLINOIS

**Retail Space Available**  
Northwest corner of Chicago & Central

FOR MORE INFORMATION,  
PLEASE CONTACT

MICHAEL WEXLER  
mwexler@canvasrealestate.com  
773.426.1759

KATE WYANT  
kwyant@canvasrealestate.com  
630.730.5239

# DEMOGRAPHICS



**47.8k+**

Total Population  
1 Mile

14.3k+ 6.56k+  
0.5 Miles 0.25 Miles



**\$142k+**

Average HH Income  
1 Mile

\$143k+ \$117k+  
0.5 Miles 0.25 Miles



**44.5k+**

Daytime Population  
1 Mile

15.3k+ 5.57k+  
0.5 Miles 0.25 Miles

## SOUTH LOOP

- Second generation restaurant space available at the hard corner of S. Michigan Avenue and 21st Street, in Chicago's vibrant South Loop neighborhood.
- High open ceilings, two fully built out bathrooms, front of house and back of house kitchen infrastructure
- Excellent visibility with amazing frontage down 21st street, perfect for a large patio and outdoor seating.
- Located in a densely populated neighborhood, and in close proximity to McCormick Place, Soldier Field, Millennium Park, Grant Park, the Museum Campus, the lakefront, numerous shops, boutiques, restaurants and public transportation.



CANVAS

# FLOOR PLAN

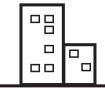
SPACE AVAILABLE



**3,400** sqft

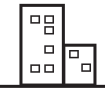
Total

FRONTAGE



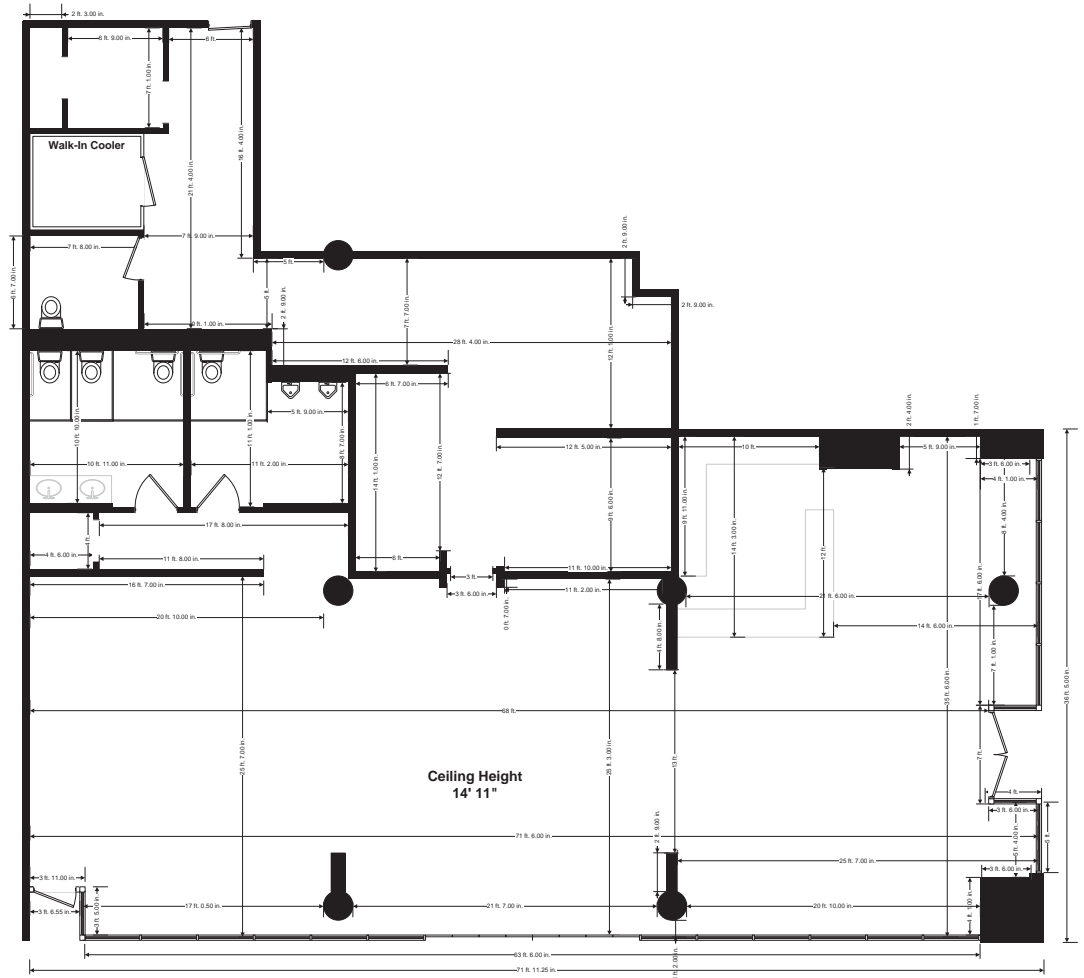
**72'**

on S. Michigan Avenue



**36'5"**

on E. 21st Street



E. 21ST STREET

S. MICHIGAN AVENUE

CANVAS



# STREET MAP

2036 S. Michigan Avenue  
CHICAGO, ILLINOIS

SPACE AVAILABLE



FOR MORE INFORMATION,  
PLEASE CONTACT

**MICHAEL WEXLER**  
mwexler@canvasrealestate.com  
773.426.1759

**KATE WYANT**  
kwyant@canvasrealestate.com  
630.730.5239

CANVAS

