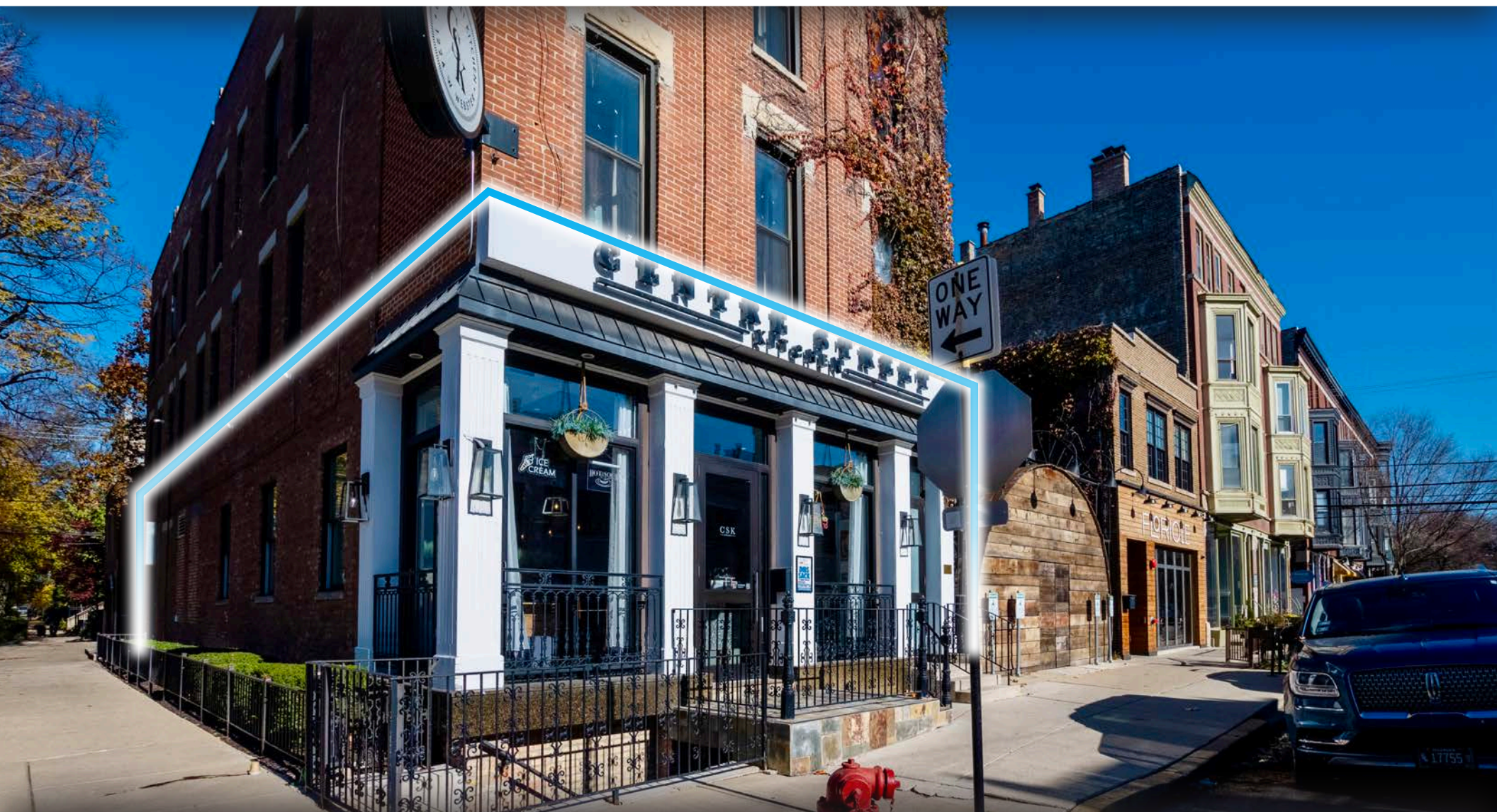


RETAIL/RESTAURANT SPACE
AVAILABLE FOR LEASE

1224 W. Webster Ave.
LINCOLN PARK - CHICAGO



CANVAS

LINCOLN PARK

Located at the Northeast corner
of Webster and Magnolia

HIGHLIGHTS

- Prime retail/restaurant opportunity in the heart of Lincoln Park
- Situated less than one block from the renowned 1.85 acre Trebes Park, known for drawing neighborhood residents of all ages
- Surrounded by a dense residential population with average household Income exceeding \$250,000 within one mile
- Just West of DePaul University and a stone's throw from Oscar F Mayer School
- Full kitchen with black iron ventilation plus usable lower level space with built out bathrooms, prep, storage, office, and refrigeration

NEIGHBORHOOD RETAILERS

amazon

Cotélac

THE
CryoBar^o
CRYOTHERAPY

FLORIOLE

Monograms
on
Webster

OLD PUEBLO
cantina

SALON V

Sweet Mandy B's
- OLD FASHIONED DESSERTS -

DEMOGRAPHICS



63.2k+

Total Population
1 Mile



\$215k+

Average HH Income
1 Mile

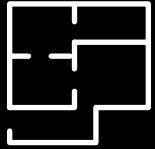


55.8k+

Daytime Population
1 Mile

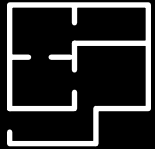
CANVAS

SPACE AVAILABLE



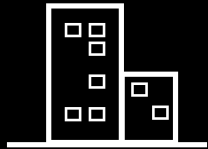
2,123 sf

First Floor



2,077 sf

Lower Level

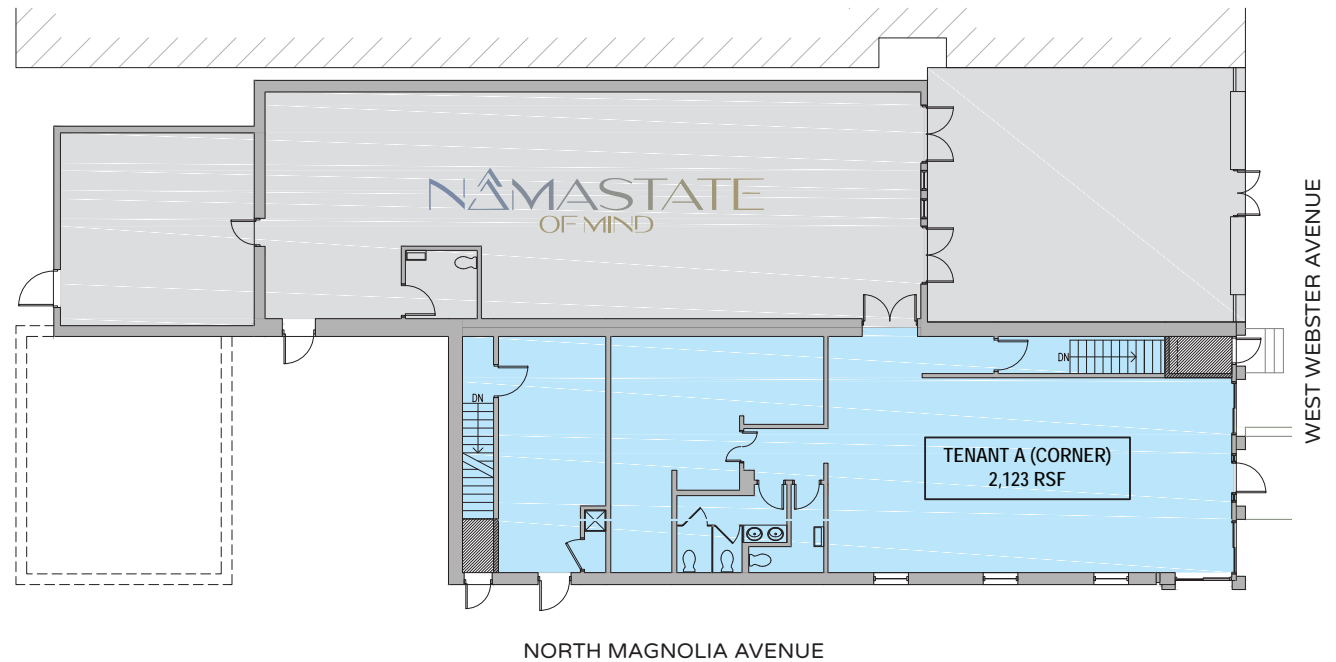


30'8"

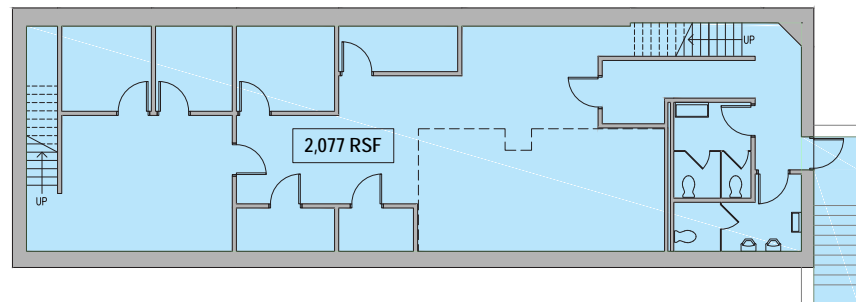
Frontage on W. Webster

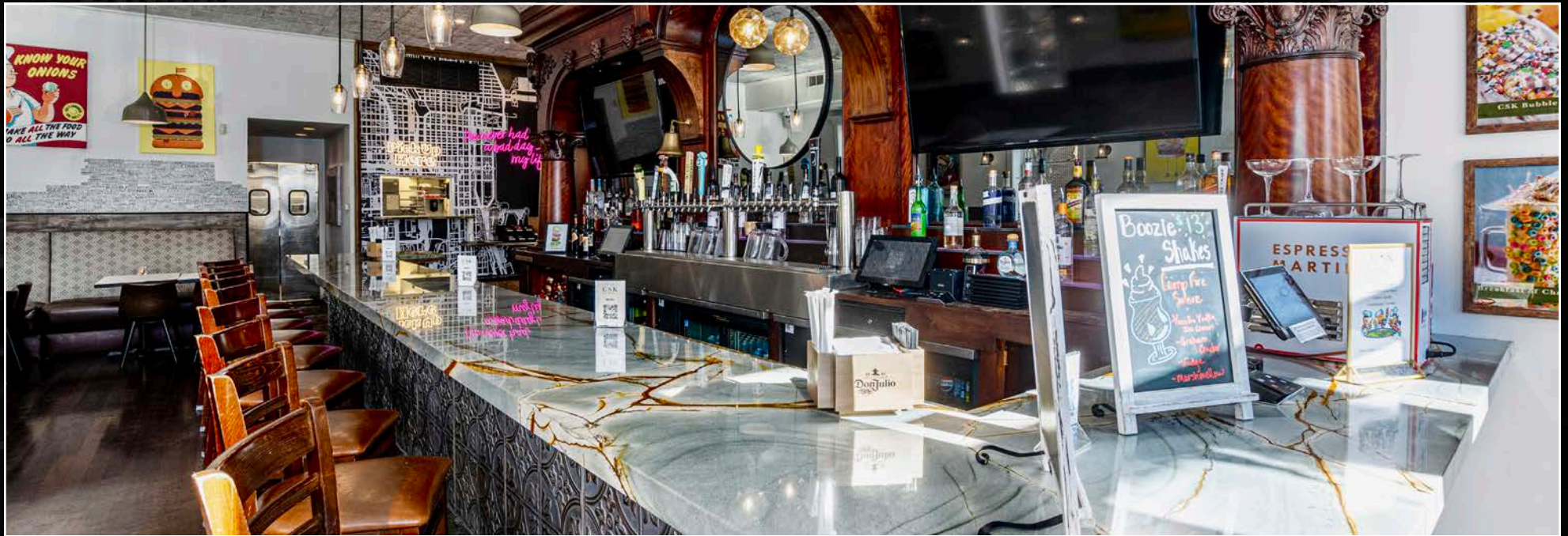
FLOOR PLANS

First Floor



Lower Level







FOR MORE INFORMATION, PLEASE CONTACT

ANTHONY CAMPAGNI
ac@canvasrealestate.com
847.651.8669

ELAN RASANSKY
 elan@canvasrealestate.com
 414.380.1555

QUINN THOMAS
qthomas@canvasrealestate.com
847.651.5589

CANVAS

2211 North Elston Avenue,
Suite 307, Chicago
www.canvasrealestate.com