



1224 W. Webster Avenue

CHICAGO, ILLINOIS

Retail/Restaurant Space for Lease
Northeast corner of Webster and Magnolia

FOR MORE INFORMATION, PLEASE CONTACT

ANTHONY CAMPAGNI • 847.651.8669
ac@canvasrealestate.com

ELAN RASANSKY • 414.380.1555
elan@canvasrealestate.com

QUINN THOMAS • 847.651.5589
qthomas@canvasrealestate.com

DEMOGRAPHICS



63.2k+

Total Population
1 Mile

15.2k+ 4.66k+
0.5 Miles 0.25 Miles



\$215k+

Average HH Income
1 Mile

\$249k+ \$253k+
0.5 Miles 0.25 Miles



55.8k+

Daytime Population
1 Mile

13.3k+ 4.36k+
0.5 Miles 0.25 Miles



LINCOLN PARK

- Prime retail/restaurant opportunity in the heart of Lincoln Park
- Situated less than one block from the renowned 1.85 acre Trebes Park, known for drawing neighborhood residents of all ages
- Surrounded by a dense residential population with average household Income exceeding \$250,000 within one mile
- Just West of DePaul University and a stone's throw from Oscar F Mayer School
- Full kitchen with black iron ventilation plus usable lower level space with built out bathrooms, prep, storage, office, and refrigeration

NEIGHBORING TENANTS

Floriolo, Monograms on Webster, Sweet Mandy B's, Old Pueblo Cantina, The CryoBar, Celina's Nail Spa, Cotelac, Good Games, Olor Coffee, Salon V, Amazon, and more

CANVAS

FLOOR PLANS

SPACE AVAILABLE



2,123 sqft

First Floor



2,077 sqft

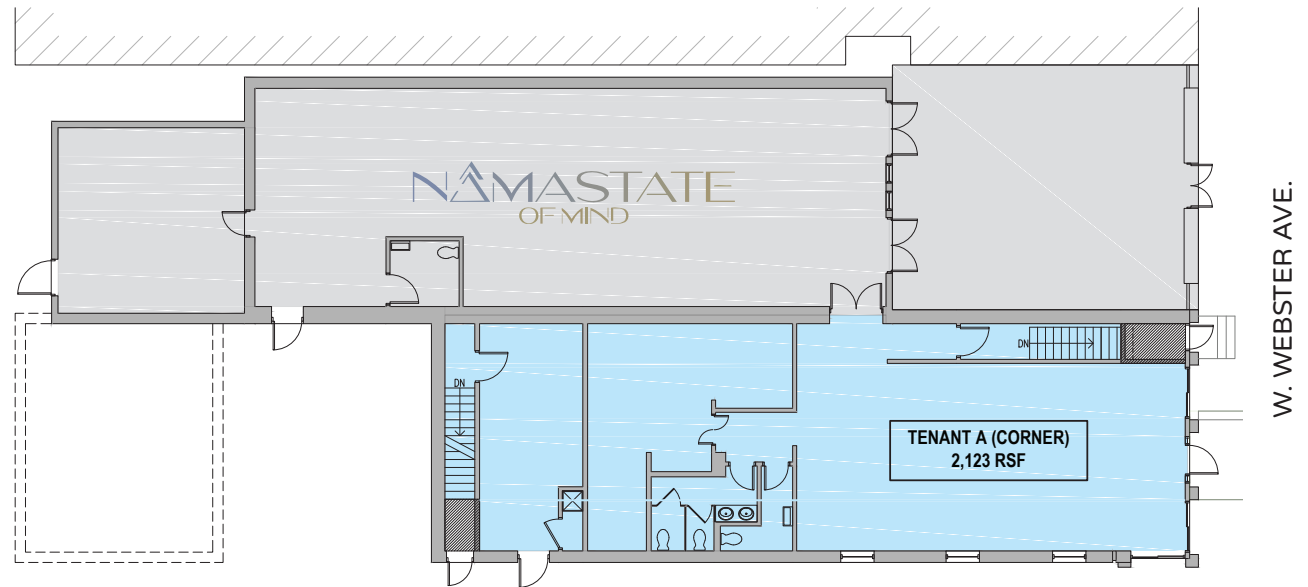
Lower Level

FRONTAGE

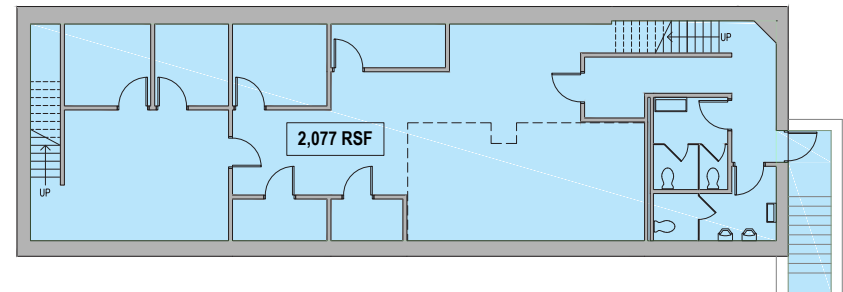


30 ft 8 in

on W. Webster



First Floor
N. MAGNOLIA AVE.



Lower Level

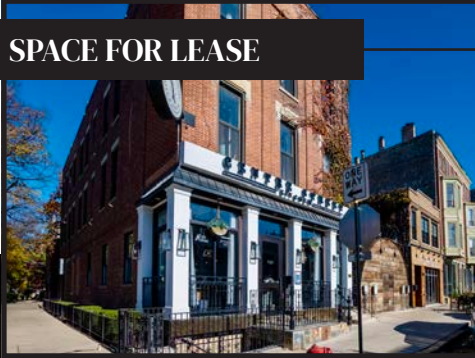
CANVAS



STREET MAP

1224 W. Webster Avenue
CHICAGO, ILLINOIS

SPACE FOR LEASE



FOR MORE INFORMATION,
PLEASE CONTACT

ANTHONY CAMPAGNI

ac@canvasrealestate.com
847.651.8669

ELAN RASANSKY

elan@canvasrealestate.com
414.380.1555

QUINN THOMAS

qthomas@canvasrealestate.com
847.651.5589

CANVAS

