



**Join Anine Bing in  
Chicago's Gold Coast**



**21 E. Chestnut Street**  
**CHICAGO, ILLINOIS**

**Retail Space Available**  
Southwest corner of Chestnut and Wabash

FOR MORE INFORMATION,  
PLEASE CONTACT

**ANTHONY CAMPAGNI**  
[ac@canvasrealestate.com](mailto:ac@canvasrealestate.com)  
847.651.8669

**ELAN RASANSKY**  
[elan@canvasrealestate.com](mailto:elan@canvasrealestate.com)  
414.380.1555



## DEMOGRAPHICS



**120k+**

Total Population  
1 Mile

43.7k+  
0.5 Miles

13.8k+  
0.25 Miles



**\$184k+**

Average HH Income  
1 Mile

\$167k+  
0.5 Miles

\$174k+  
0.25 Miles



**290k+**

Daytime Population  
1 Mile

86.7k+  
0.5 Miles

26.2k+  
0.25 Miles



## GOLD COAST

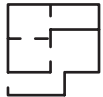
- Located at the base of 168 newly converted luxury apartment rentals
- Irreplaceable Gold Coast location steps from Rag & Bone, Tesla, Peter Millar, Jeni's Splendid Ice Creams and many other popular retailers and restaurants
- Immediate access to CTA bus and Red Line Chicago "L" train connection (3-minute walk), and the Brown/Purple Line Chicago "L" stop just six blocks away
- Less than two blocks west of Chicago's famed "Magnificent Mile" near Water Tower Place and 900 North Michigan shops, and two blocks south of the elite boutique shopping on Oak Street



CANVAS

FLOOR PLAN

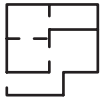
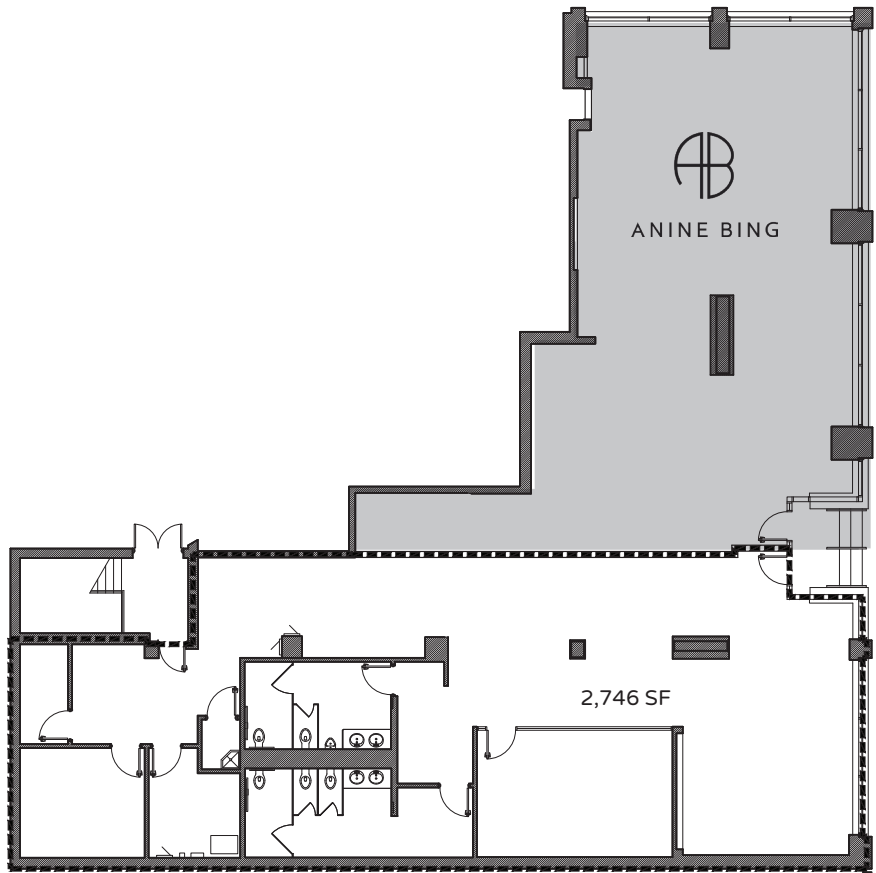
SPACE AVAILABLE



2,746 sqft

Ground Level

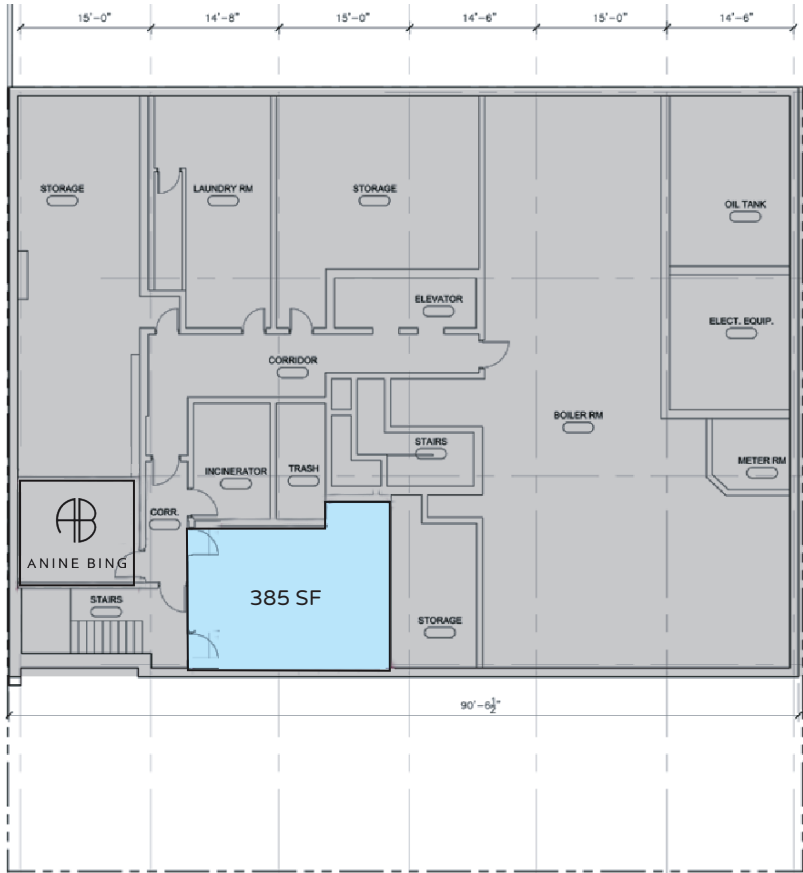
EAST CHESTNUT STREET



385 sqft

Lower Level

EAST CHESTNUT STREET



CANVAS



# STREET MAP

21 E. Chestnut Street  
CHICAGO, ILLINOIS

SPACE AVAILABLE



FOR MORE INFORMATION,  
PLEASE CONTACT

ANTHONY CAMPAGNI  
ac@canvasrealestate.com  
847.651.8669

ELAN RASANSKY  
elan@canvasrealestate.com  
414.380.1555

CANVAS

