

500 Skokie Blvd.

WILMETTE, ILLINOIS

Café/Restaurant Space Available
 Northeast corner of Skokie and Wilmette

FOR MORE INFORMATION, PLEASE CONTACT
ANTHONY CAMPAGNI • 847.651.8669
 ac@canvasrealestate.com

ELAN RASANSKY • 414.380.1555
 elan@canvasrealestate.com

QUINN THOMAS • 847.651.5589
 qthomas@canvasrealestate.com

DEMOGRAPHICS



129k+

Total Population
3 Miles

53.4k+
2 Miles

13.1k+
1 Mile



\$196k+

Average HH Income
3 Miles

203k+
2 Miles

199k+
1 Mile



130k+

Daytime Population
3 Miles

55.2k+
2 Miles

18.1k+
1 Mile



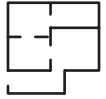
WILMETTE

- Ground lease opportunity at a stoplight intersection in the North Shore Suburb of Wilmette
- Multiple potential building uses including coffee, restaurant, retail, and medical with flexibility on design
- Over 13,200 vehicles per day
- Approx. 700 square foot building plus large outdoor space
- Very dense surrounding residential population and commercial daytime traffic
- Up to 17 parking spaces available on site
- Building can be expanded or replaced

CANVAS

PROPOSED SITE PLAN

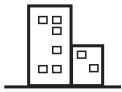
SPACE AVAILABLE



2,200 sqft

Total

FRONTAGE



130'

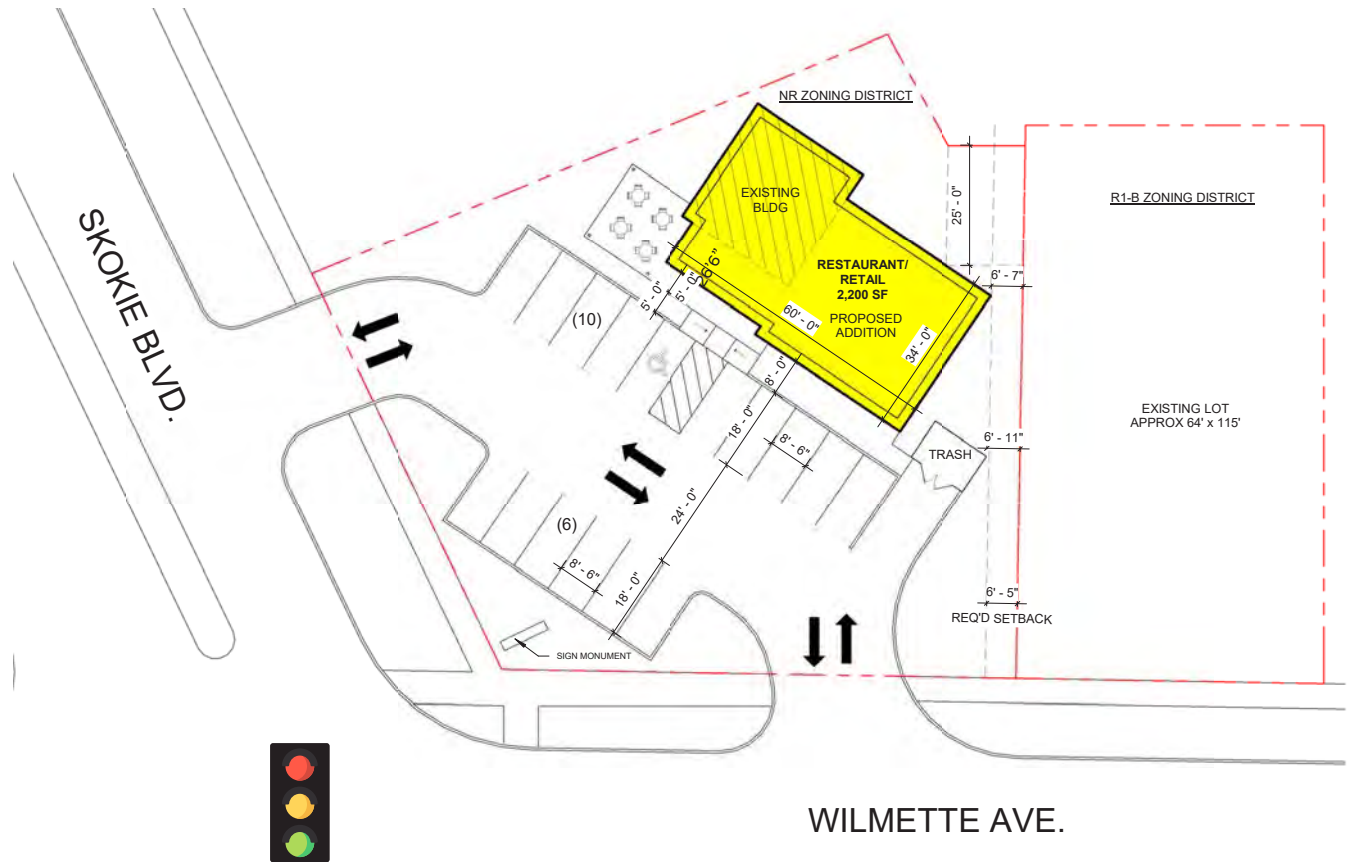
Wraparound Frontage

PARKING



16

Parking Spaces



CANVAS



EXISTING SITE PLAN

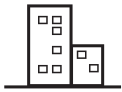
SPACE AVAILABLE



700 sqft

Approximate

FRONTAGE



50'

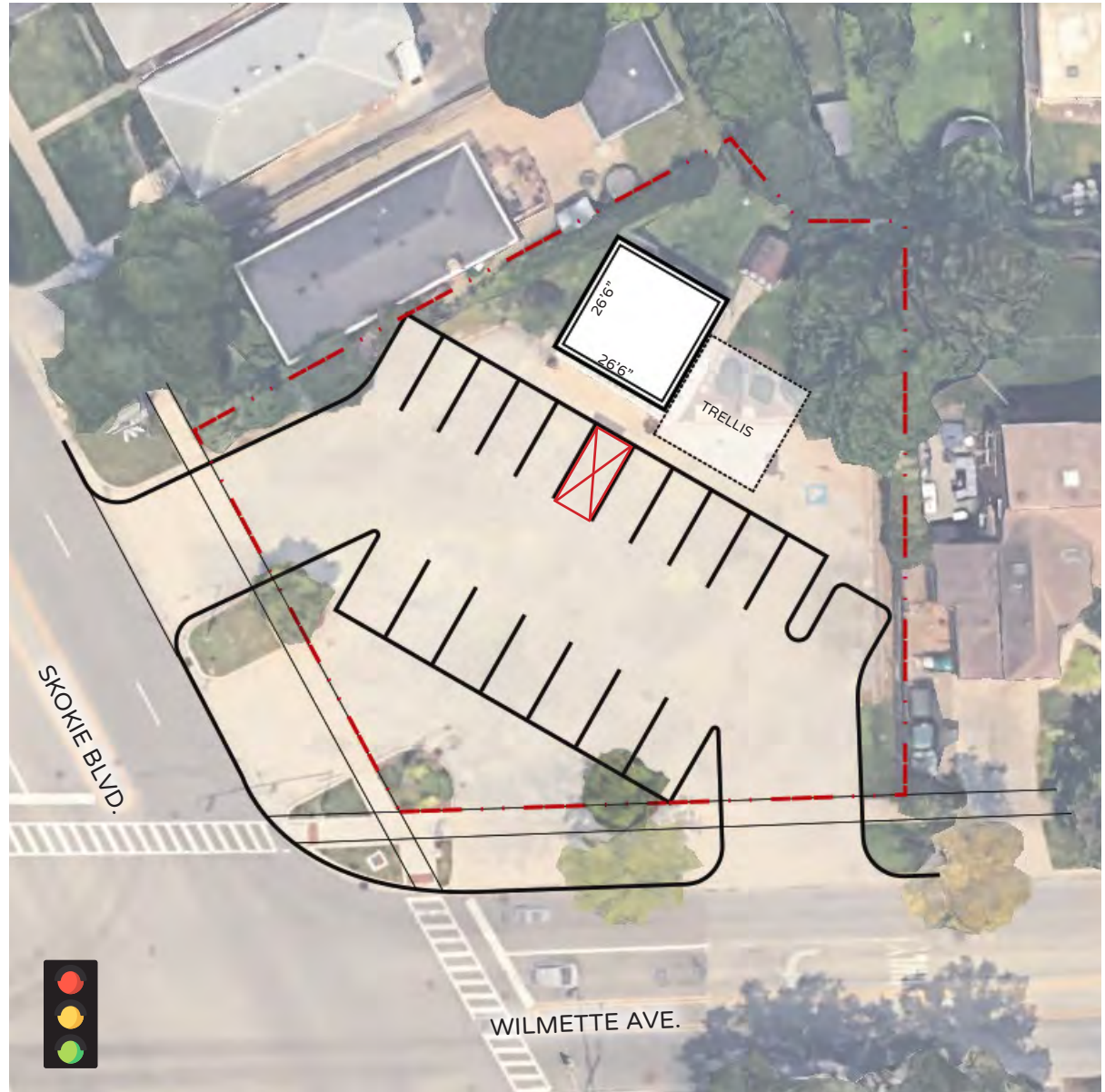
Wraparound

PARKING



17

Parking Spaces



CANVAS



STREET MAP

500 Skokie Blvd.
WILMETTE, ILLINOIS

SPACE AVAILABLE



FOR MORE INFORMATION,
PLEASE CONTACT

ANTHONY CAMPAGNI
ac@canvasrealestate.com
847.651.8669

ELAN RASANSKY
elan@canvasrealestate.com
414.380.1555

QUINN THOMAS
qthomas@canvasrealestate.com
847.651.5589

CANVAS

