



L3CAPITAL.COM

10 | NORTH 51 | RUSH

Where Retail Meets **Gold Coast** Prestige.

2,319 SF plus
Lower Level

L3 Capital

CANVAS

CHICAGO TRADE AREAS



GOLD COAST

CANVAS

10 | NORTH
51 | RUSH

Where Retail Meets
Gold Coast Prestige.

Neighborhood Overview



\$175K+
AVE. HH INCOME
WITHIN A ONE MILE RADIUS



\$100M
IN RESTAURANT SALES
WITHIN A ONE BLOCK RADIUS



\$10 BILLION+
IN RETAIL SALES IN 2022 IN
GOLD COAST X MAG MILE

Gold Coast is Chicago's most affluent and mature neighborhood. It is the preferred trade area among luxury and high-end contemporary retailers, and home to some of the highest grossing restaurants in the country. Ranging from internationally recognizable brands to independent boutiques and restaurants, it has established itself as Chicago's premier destination for shopping and entertainment.

IN THE AREA

Retail: Abercrombie, Alice + Olivia, Anine Bing, Arc'teryx, Aritzia, Away Luggage, Balenciaga, Cartier, Celine, Glossier, Golden Goose, Hermes, Lululemon, Madewell, On Running, Prada, Rivian, Urban Outfitters, Veronica Beard, Vuori, and Warby Parker.

Restaurant: Carmine's, Gibson's, Hugo's Frog Bar, Le Colonial, Lux Bar, Maple & Ash, Sparrow, Tavern on Rush, The Bellevue.

Hotel: Waldorf Astoria, The Thompson, The Viceroy, Four Seasons, Sofitel, Ambassador

Property Details

1051 North Rush Street is the premier retail leasing opportunity in Chicago's prized Gold Coast. The rarely available corner presents incomparable visibility and positioning in the market.

Located at the highly trafficked intersection at Rush, State & Cedar streets in the heart of the trade area, 1051 North Rush provides incredible branding with a double height facade and opportunity to join retailers such as On Running, Warby Parker, Away Luggage and Urban Outfitters.

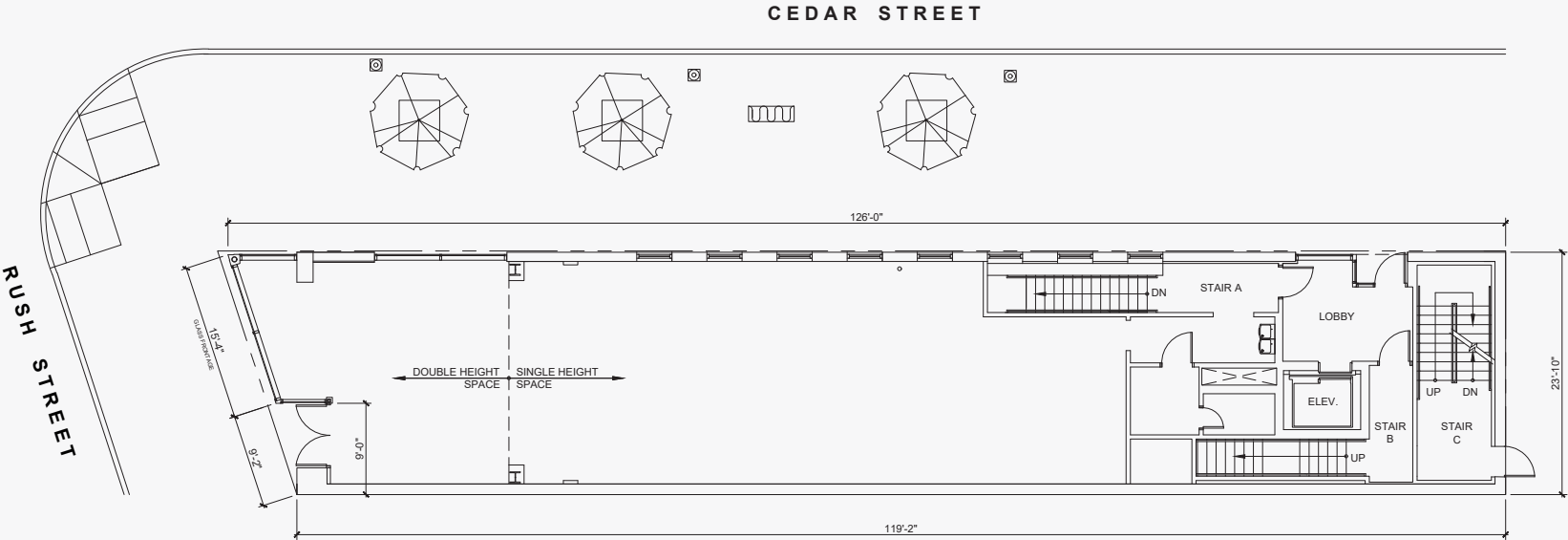
NEIGHBORHOOD: Gold Coast

ADDRESS: 1051 N. Rush Street

TOTAL SPACE: 2,319 Ground Floor
2,471 Lower Level

FRONTAGE: 24'6" on N. Rush Street
95' on E. Cedar Street

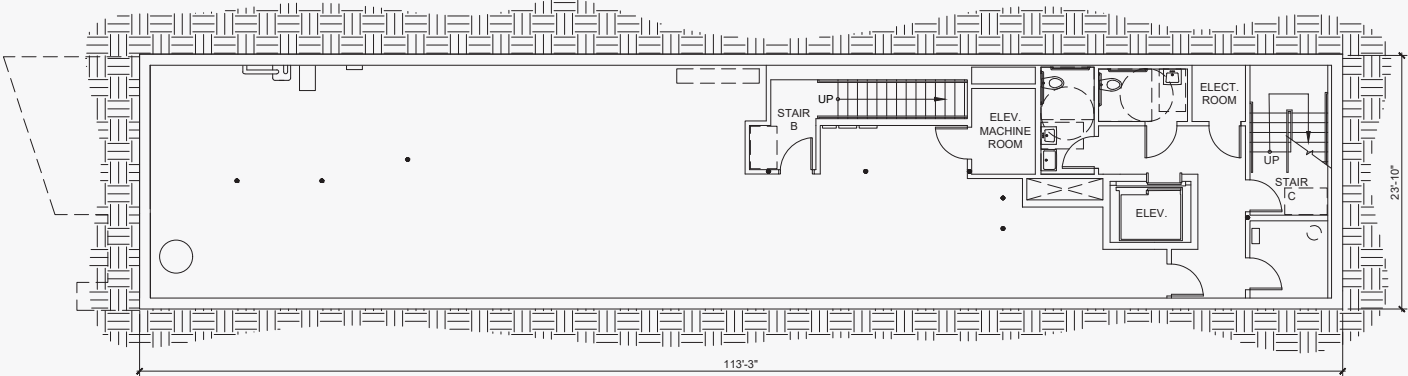
Floor Plans



1 LEVEL 1 LOD PLAN

SCALE: 3/32" = 1'-0"

Site Area	= 2,954 SF
Building Area	
Level 2	= 2,898 SF
Level 1	= 2,859 SF
Basement	= 2,719 SF
Total	= 8,476 SF
Rentable Area	
Level 2	= 1,984 SF
Level 1	= 2,319 SF
Basement	= 2,471 SF
Total	= 6,774 SF
Usable Area	
Level 2	= 1,783 SF
Level 1	= 2,084 SF
Basement	= 2,220 SF
Total	= 6,087 SF



B BASEMENT LOD PLAN

SCALE: 3/32" = 1'-0"



FOR MORE INFORMATION, PLEASE CONTACT

Michael Wexler • 773.426.1759
mwexler@canvasrealestate.com

Andrew Becker • 312.231.2600
abecker@canvasrealestate.com

John Bassi • 708.822.4583
jbassi@canvasrealestate.com



L3CAPITAL.COM

10 | NORTH
51 | RUSH

Where Retail Meets
Gold Coast Prestige.

2,319 SF plus
Lower Level

L3 Capital

CANVAS