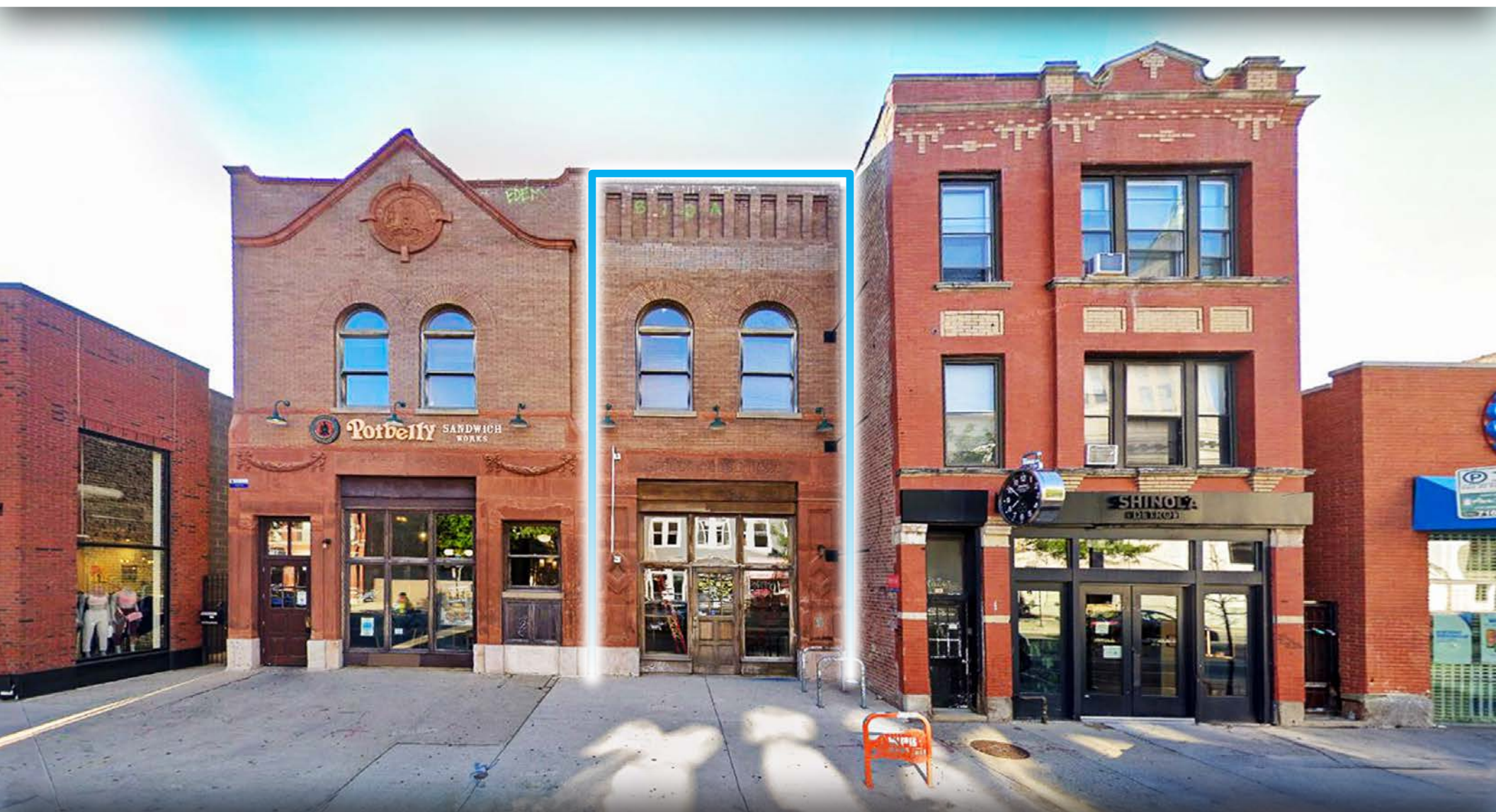


FIREHOUSE BUILDING FOR LEASE
MOVE-IN READY RETAIL SPACE

1623 N. Damen Ave.
BUCKTOWN - CHICAGO



CANVAS

BUCKTOWN

Located at the East block of Damen
between North and Wabansia

DEMOGRAPHICS

HIGHLIGHTS

- Situated just north of the dynamic North/Milwaukee/Damen intersection on the best block on Damen retail shopping corridor
- Join new to market retailers including Jones Road Beauty, Baggu & Big Bud Pres
- Just steps from Damen Avenue Blue Line "L" Stop and a short walk to the Bloomingdale "606" Trail
- Immediately surrounded by a strong mix of retailers and restaurants including Lululemon, Marine Layer, Warby Parker, Credo, Shinola, Bartaco, Goddess & The Grocer, Potbelly
- Unique branding opportunity to lease historically significant Firehouse Building
- Move-in ready

NEIGHBORHOOD RETAILERS

**BARNES
& NOBLE**

bluemercury

 **BondVet**



CHASE 




salomon

SHINOLA

VanLeeuwen

WARBY PARKER

**WELLS
FARGO**



66.7k+

Total Population
1 Mile



\$177k+

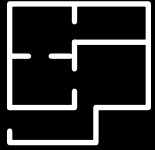
Average HH Income
1 Mile



54.3k+

Daytime Population
1 Mile

SPACE AVAILABLE

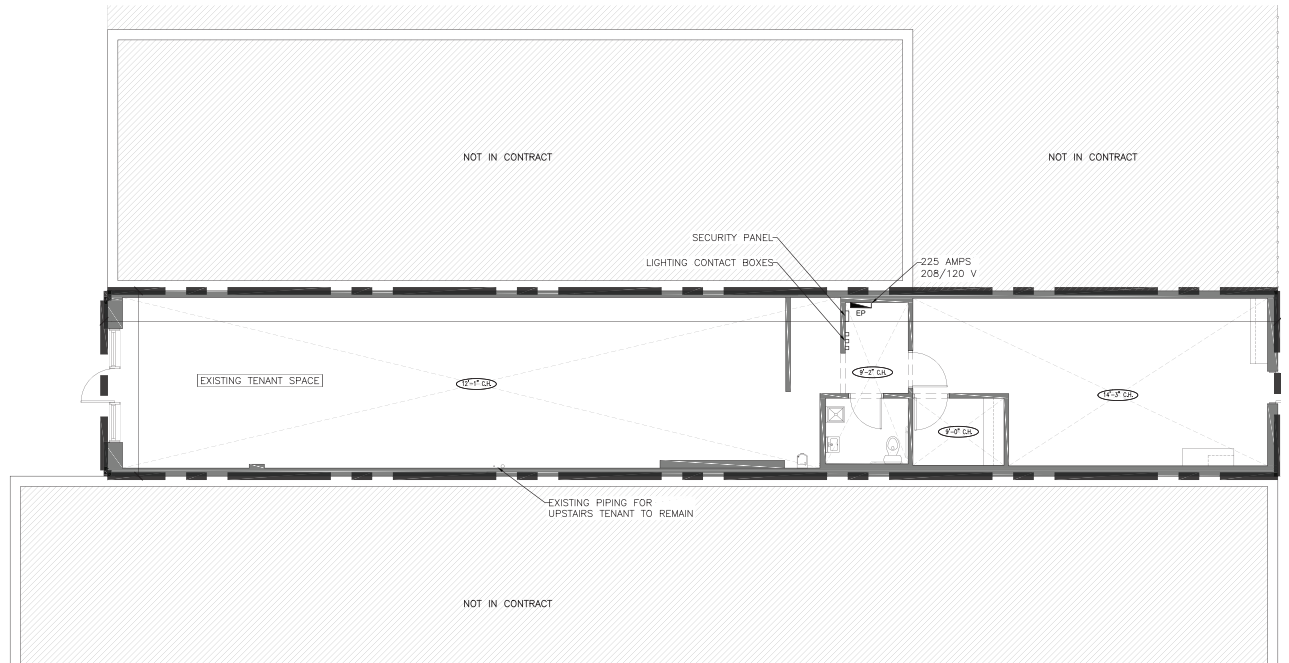


2,100 sf

Ground Floor

FLOOR PLAN

NORTH DAMEN AVENUE

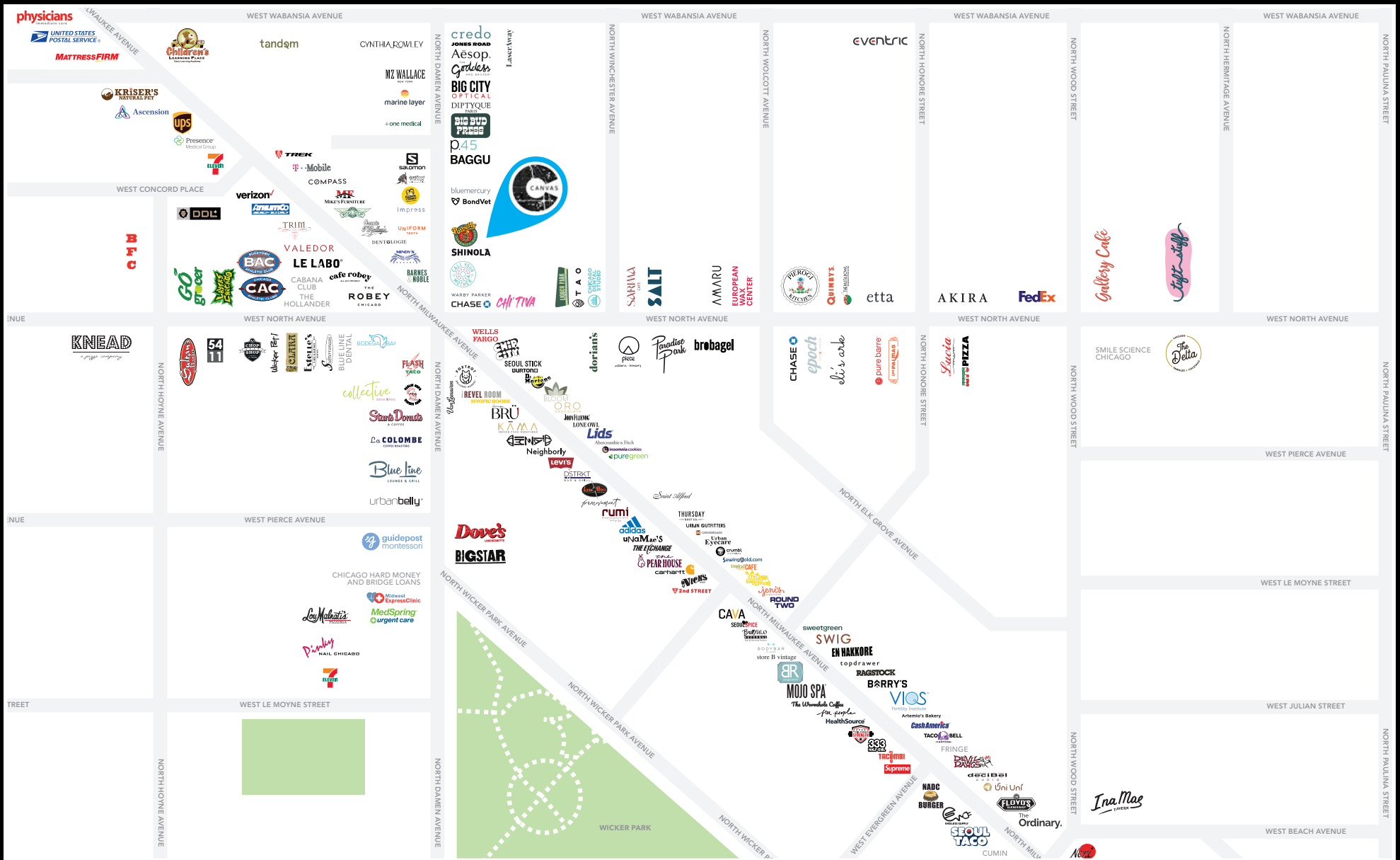






Most recently occupied by Pleasing,
Harry Style's coveted beauty & apparel brand





FOR MORE INFORMATION, PLEASE CONTACT

JOHN BASSI
 jbassi@canvasrealestate.com
 708.822.4583

MICHAEL WEXLER
 mwexler@canvasrealestate.com
 773.426.1759

CANVAS

2211 North Elston Avenue,
 Suite 307, Chicago
 www.canvasrealestate.com