

"FIREHOUSE" BUILDING FOR LEASE



1623 N. Damen Avenue
CHICAGO, ILLINOIS

Move-In Ready Retail Space
East block of Damen between North & Wabansia

FOR MORE INFORMATION, PLEASE CONTACT

JOHN BASSI • 708.822.4583
jbassi@canvasrealestate.com

MICHAEL WEXLER • 773.426.1759
mwexler@canvasrealestate.com

KATE WYANT • 630.730.5239
kwyant@canvasrealestate.com



Most recently occupied by Pleasing, Harry Style's coveted beauty & apparel brand

CANVAS

DEMOGRAPHICS



66.7k+
Total Population
1 Mile

19.1k+ 4.58k+
0.5 Miles 0.25 Miles



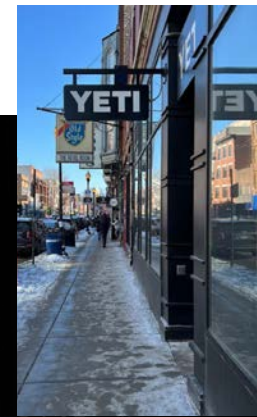
\$177k+
Average HH Income
1 Mile

\$213k+ \$205k+
0.5 Miles 0.25 Miles



54.3k+
Daytime Population
1 Mile

16.2k+ 5.77k+
0.5 Miles 0.25 Miles



BUCKTOWN

- Situated just north of the dynamic North/Milwaukee/Damen intersection on the best block on Damen retail shopping corridor
- Join new to market retailers including Jones Road Beauty, Baggu & Big Bud Pres
- Just steps from Damen Avenue Blue Line "L" Stop and a short walk to the Bloomingdale "606" Trail
- Immediately surrounded by a strong mix of retailers and restaurants including Lululemon, Marine Layer, Warby Parker, Credo, Shinola, Bartaco, Goddess & The Grocer, Potbelly
- Unique branding opportunity to lease historically significant Firehouse Building
- Move-in ready

NEIGHBORING TENANTS

Adidas, Aesop, Arc'Teryx, Barnes & Noble, Bartaco, Big Star, bluemercury, Cava, Diptyque, Etta, Fjallraven, Foxtrot, Le Labo, Lululemon, Marine Layer, Scotch & Soda, Small Cheval, Sweetgreen, YETI and many more.

CANVAS

FLOOR PLANS

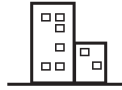
SPACE AVAILABLE



2,100 sqft

Ground Floor

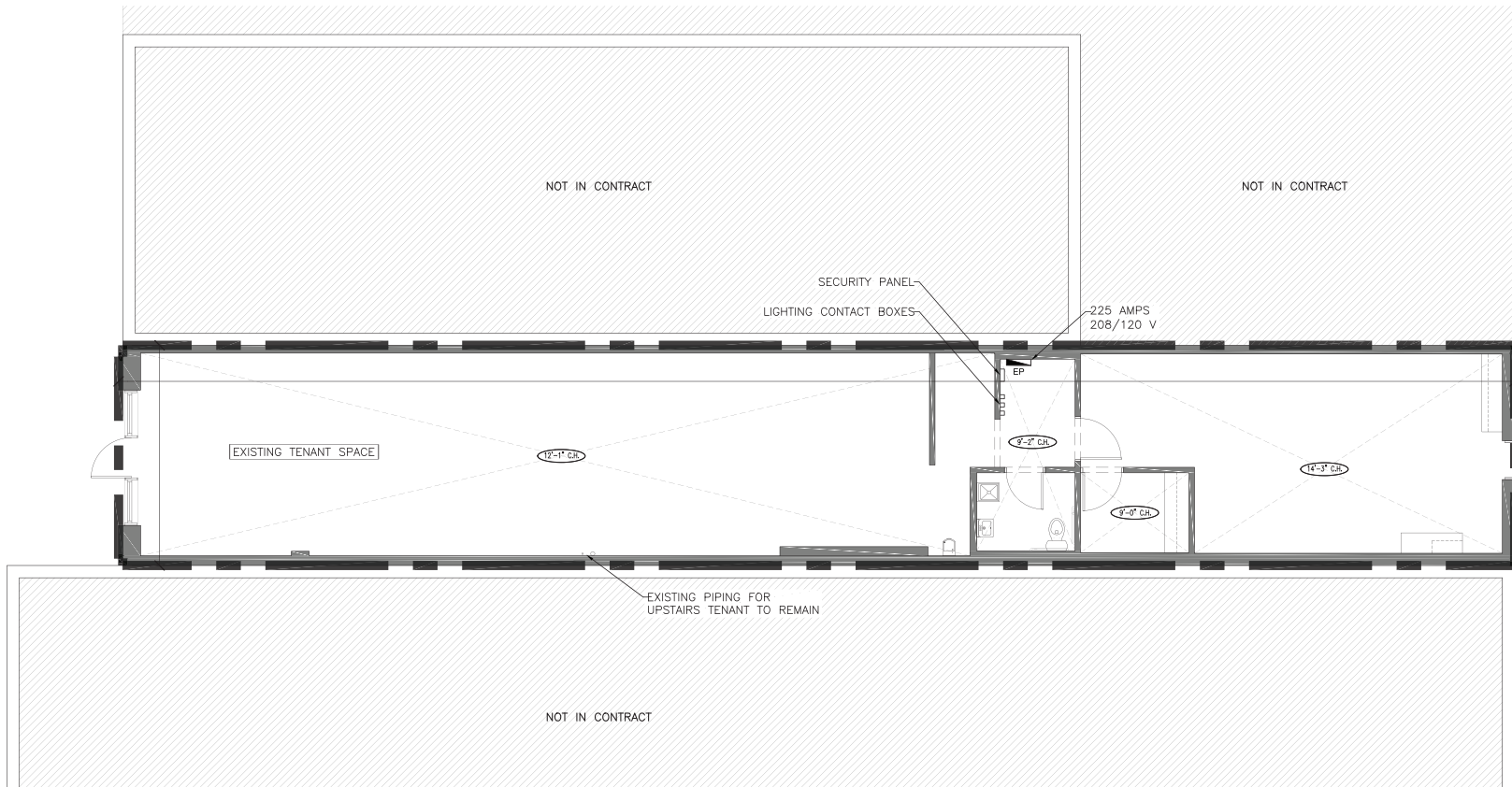
FRONTAGE



18'

on N. Damen Avenue

NORTH DAMEN AVENUE



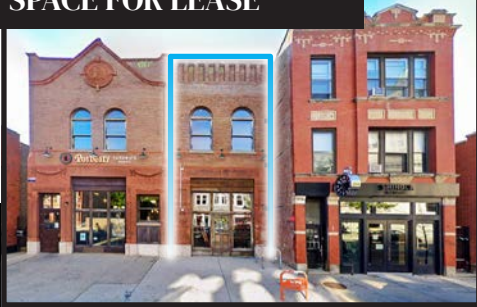
CANVAS



STREET MAP

1623 N. Damen Avenue
CHICAGO, ILLINOIS

SPACE FOR LEASE



FOR MORE INFORMATION,
PLEASE CONTACT

JOHN BASSI

jbassi@canvasrealestate.com
708.822.4583

MICHAEL WEXLER

mwexler@canvasrealestate.com
773.426.1759

KATE WYANT

kwyant@canvasrealestate.com
630.730.5239

CANVAS

