

"FIREHOUSE" BUILDING FOR LEASE



1623 N. Damen Avenue
CHICAGO, ILLINOIS

Move-In Ready Retail Space
East block of Damen between North & Wabansia

FOR MORE INFORMATION,
PLEASE CONTACT

JOHN BASSI
jbassi@canvasrealestate.com
708.822.4583

MICHAEL WEXLER
mwexler@canvasrealestate.com
773.426.1759



Most recently occupied by Pleasing, Harry Style's coveted beauty & apparel brand

CANVAS

DEMOGRAPHICS



66.7k+

Total Population
1 Mile

19.1k+ 4.58k+
0.5 Miles 0.25 Miles



\$177k+

Average HH Income
1 Mile

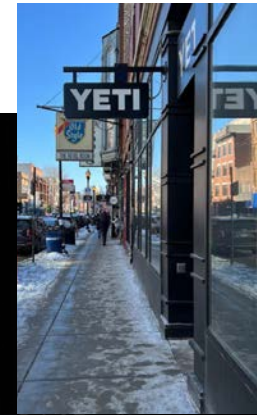
\$213k+ \$205k+
0.5 Miles 0.25 Miles



54.3k+

Daytime Population
1 Mile

16.2k+ 5.77k+
0.5 Miles 0.25 Miles



BUCKTOWN

- Situated just north of the dynamic North/Milwaukee/Damen intersection on the best block on Damen retail shopping corridor
- Join new to market retailers including Jones Road Beauty, Baggu & Big Bud Pres
- Just steps from Damen Avenue Blue Line "L" Stop and a short walk to the Bloomingdale "606" Trail
- Immediately surrounded by a strong mix of retailers and restaurants including Lululemon, Marine Layer, Warby Parker, Credo, Shinola, Bartaco, Goddess & The Grocer, Potbelly
- Unique branding opportunity to lease historically significant Firehouse Building
- Move-in ready

NEIGHBORING TENANTS

Adidas, Aesop, Arc'Teryx, Barnes & Noble, Bartaco, Big Star, bluemercury, Cava, Diptyque, Etta, Fjallraven, Foxtrot, Le Labo, Lululemon, Marine Layer, Scotch & Soda, Small Cheval, Sweetgreen, YETI and many more.

CANVAS

FLOOR PLANS

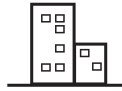
SPACE AVAILABLE



2,100 sqft

Ground Floor

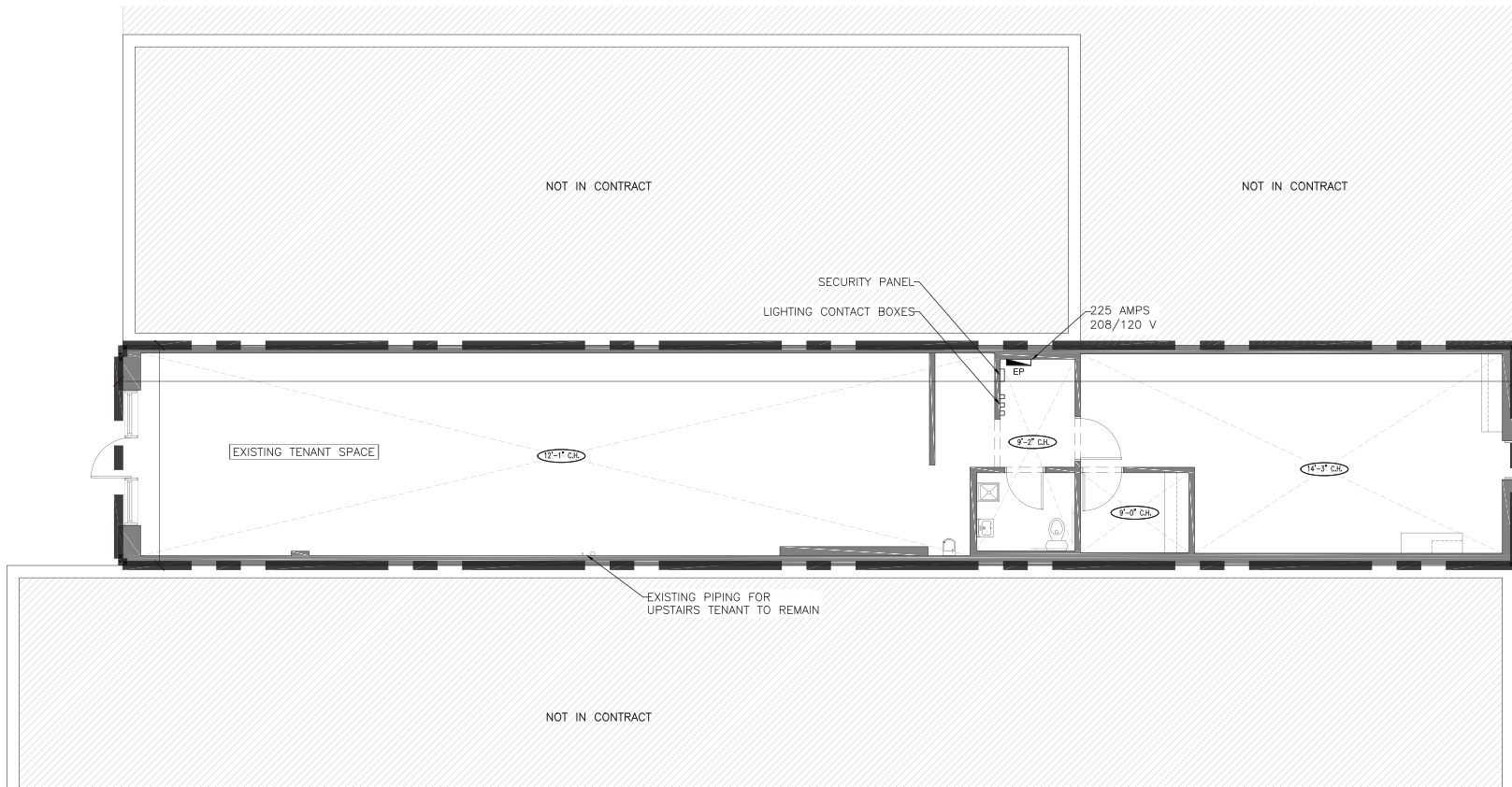
FRONTAGE



18'

on N. Damen Avenue

NORTH DAMEN AVENUE



CANVAS



