



# 1150 W. Leland Avenue

## CHICAGO, ILLINOIS

**Retail Space for Lease**  
Northeast corner of Leland and Racine

FOR MORE INFORMATION,  
PLEASE CONTACT

ANTHONY CAMPAGNI  
ac@canvasrealestate.com  
847.651.8669

KATE WYANT  
kwyant@canvasrealestate.com  
630.730.5239

# DEMOGRAPHICS



**78.7k+**

Total Population  
1 Mile

28.4k+      6.39k+  
0.5 Miles    0.25 Miles



**\$106k+**

Average HH Income  
1 Mile

\$85.2k+    \$130k+  
0.5 Miles    0.25 Miles



**58.1k+**

Daytime Population  
1 Mile

22.3k+      4.77k+  
0.5 Miles    0.25 Miles



## UPTOWN

1150 W Leland is located in Chicago's Uptown Neighborhood at the Northeast corner of Leland and Racine.

- Uptown is a highly sought after destination for entertainment and leisure with the Aragon Ballroom, Riviera Theatre, Montrose Beach, and area retail.
- The location benefits from strong vehicular and pedestrian traffic.
- Substantial frontage and modern storefront design present a great retail opportunity.
- Formerly occupied by YWCA.

## NEIGHBORING RETAILERS

Ace Hardware, Agami Sushi, First Ascent, Riviera Theatre, T-Mobile, Uptown Bikes, Uptown Recording and many more.

CANVAS

# FLOOR PLAN

SPACE AVAILABLE



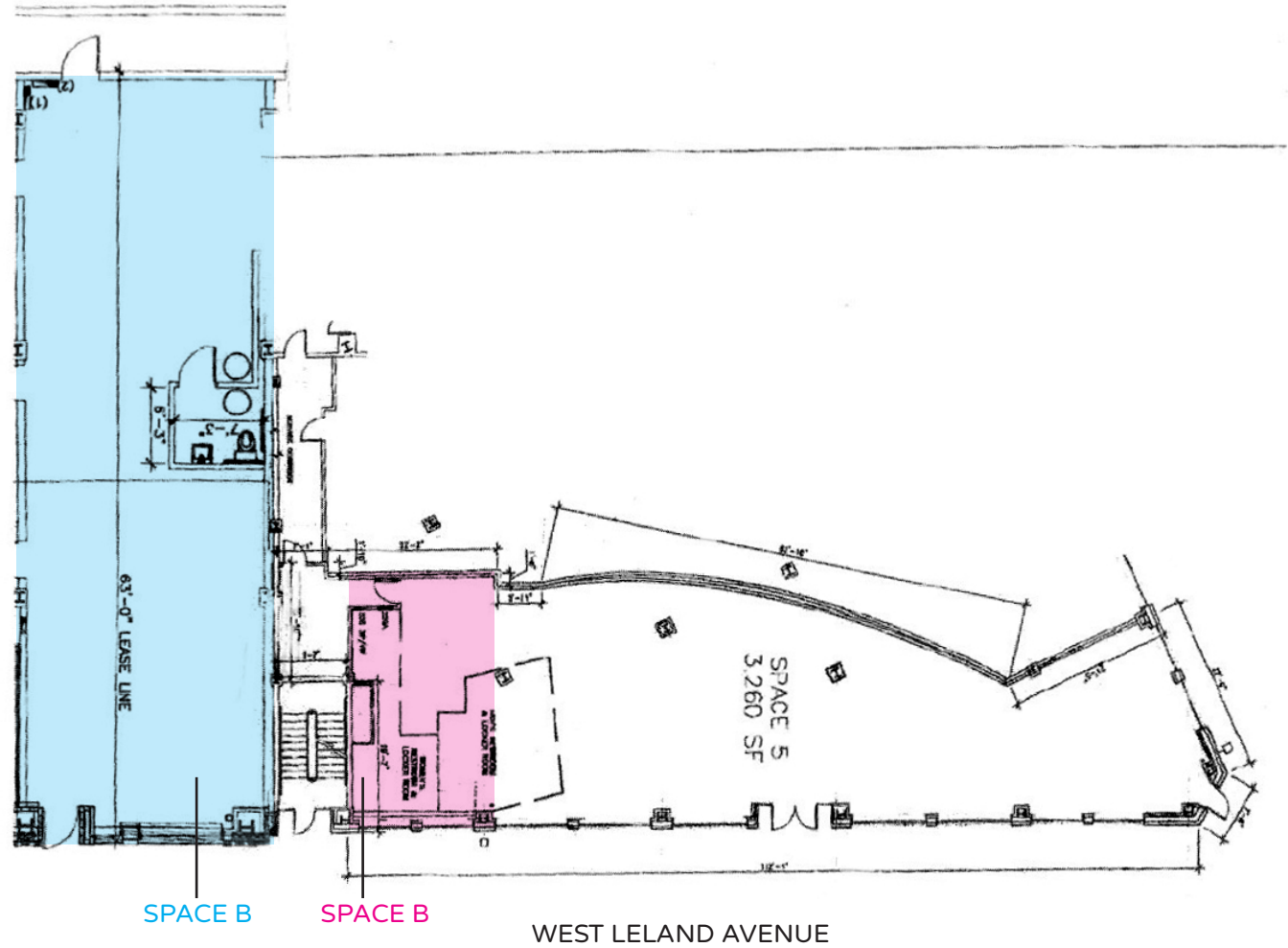
**1,274 sqft**

Space A



**500 sqft**

Space B



CANVAS



# STREET MAP

1150 W. Leland Avenue  
CHICAGO, ILLINOIS

SPACE FOR LEASE



FOR MORE INFORMATION,  
PLEASE CONTACT

ANTHONY CAMPAGNI  
ac@canvasrealestate.com  
847.651.8669

KATE WYANT  
kwyant@canvasrealestate.com  
630.730.5239

# CANVAS

