



# 1150 W. Leland Avenue

## CHICAGO, ILLINOIS

**Retail Space for Lease**

North block of Leland between Racine & Broadway

FOR MORE INFORMATION,  
PLEASE CONTACT

ANTHONY CAMPAGNI  
ac@canvasrealestate.com  
847.651.8669

KATE WYANT  
kwyant@canvasrealestate.com  
630.730.5239



## DEMOGRAPHICS



**78.7k+**

Total Population  
1 Mile

28.4k+      6.39k+  
0.5 Miles    0.25 Miles



**\$106k+**

Average HH Income  
1 Mile

\$85.2k+    \$130k+  
0.5 Miles    0.25 Miles



**58.1k+**

Daytime Population  
1 Mile

22.3k+      4.77k+  
0.5 Miles    0.25 Miles



### UPTOWN

1150 W Leland is located in Chicago's Uptown Neighborhood at the corner of Leland and Broadway.

- Uptown is a highly sought after destination for entertainment and leisure with the Aragon ballroom, Riviera Theatre, Montrose Beach, and area retail.
- The location benefits from strong vehicular and pedestrian traffic on Broadway.
- Substantial frontage and modern storefront design present a great retail opportunity.

### NEIGHBORING RETAILERS

Ace Hardware, Agami Sushi, First Ascent, Uptown Bikes, Uptown Recording, Riviera Theatre, T-Mobile

CANVAS

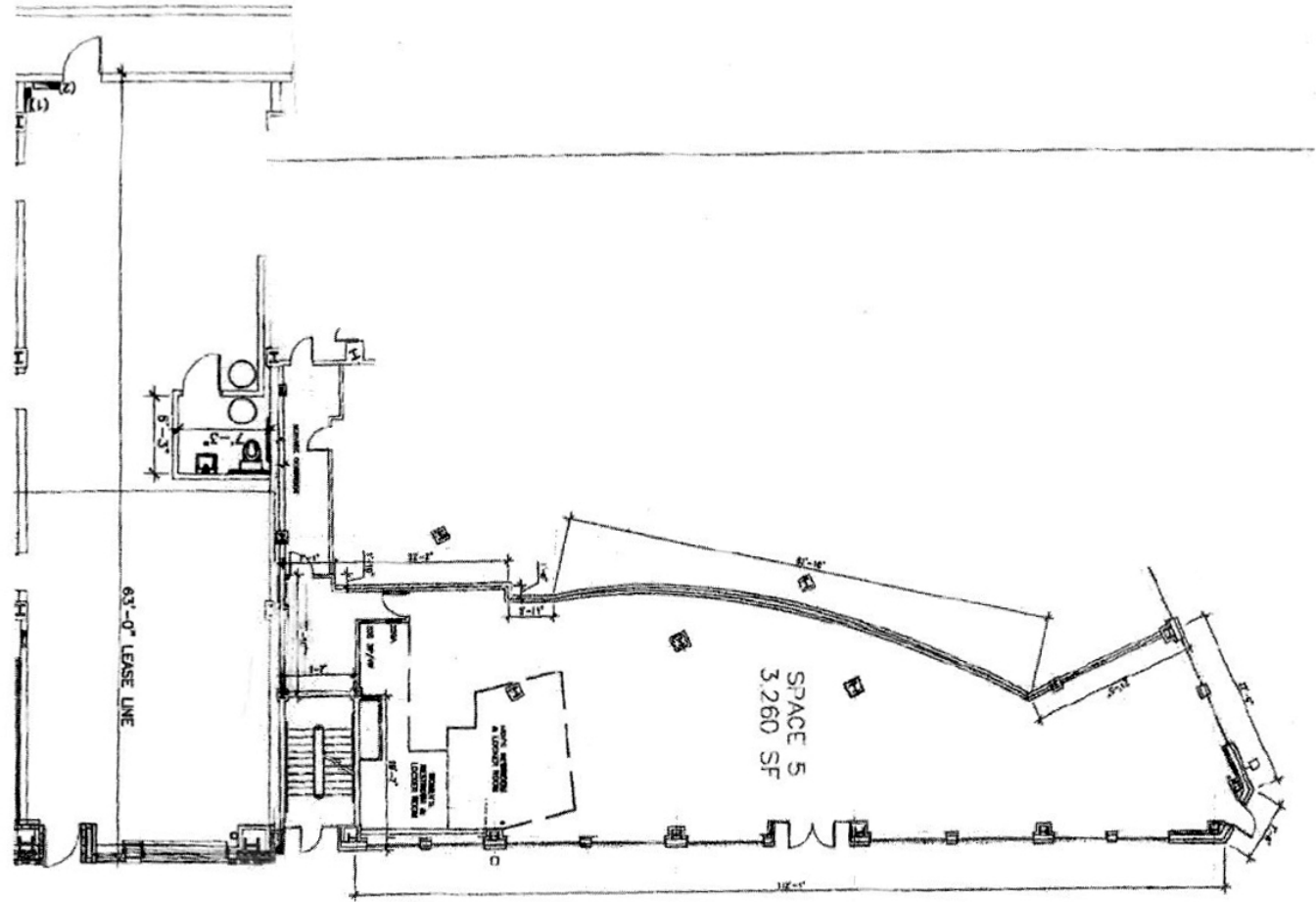
# FLOOR PLAN

SPACE AVAILABLE



**3,260** sqft

Total



WEST LELAND AVENUE

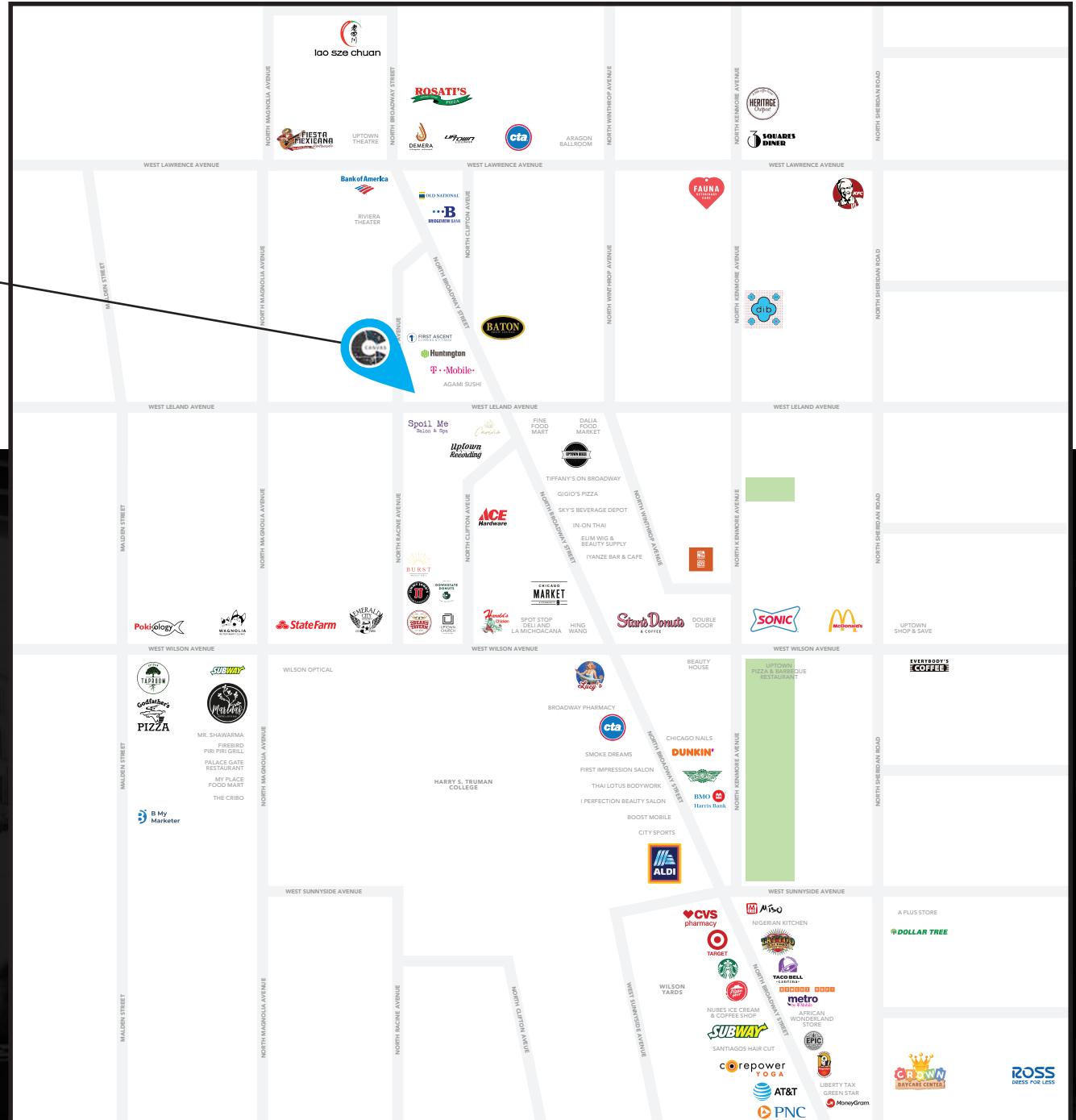
CANVAS



# STREET MAP

1150 W. Leland Avenue  
CHICAGO, ILLINOIS

SPACE FOR LEASE



FOR MORE INFORMATION,  
PLEASE CONTACT

ANTHONY CAMPAGNI  
ac@canvasrealestate.com  
847.651.8669

KATE WYANT  
kwyant@canvasrealestate.com  
630.730.5239

CANVAS

