



1308 N. Milwaukee Avenue CHICAGO, ILLINOIS

Space for Lease

Southwest block of Milwaukee between Hermitage & Paulina

FOR MORE INFORMATION,
PLEASE CONTACT

ANTHONY CAMPAGNI
ac@canvasrealestate.com
847.651.8669

QUINN THOMAS
qthomas@canvasrealestate.com
847.651.5589

DEMOGRAPHICS



58.8k+

Total Population
1 Mile

20.8k+ 5.48k+
0.5 Miles 0.25 Miles



\$185k+

Average HH Income
1 Mile

\$189k+ \$200k+
0.5 Miles 0.25 Miles



55.5k+

Daytime Population
1 Mile

15.3k+ 4.43k+
0.5 Miles 0.25 Miles



WICKER PARK

Restaurant/retail space located in the heart of Wicker Park, known for its artistic vibe and strong mix of dining, shopping, and nightlife.

- Space Available: 2,380 SF
- Fully built out restaurant space with black iron in place
- Lower level storage space included at no charge

NEIGHBORING RETAILERS

Advocate Medical Group, Antique Taco, Belmont Army Surplus, Big Mini Putt Club, Chengdu Impression, Cinnaholic, Club Pilates, Footlocker, Iron Age Korean Steakhouse, Jewel Osco, Komorebi Sushi, Lowe's, Pet Supplies Plus, Potbelly, Revolver, Verizon, Wicker Park Dental

CANVAS

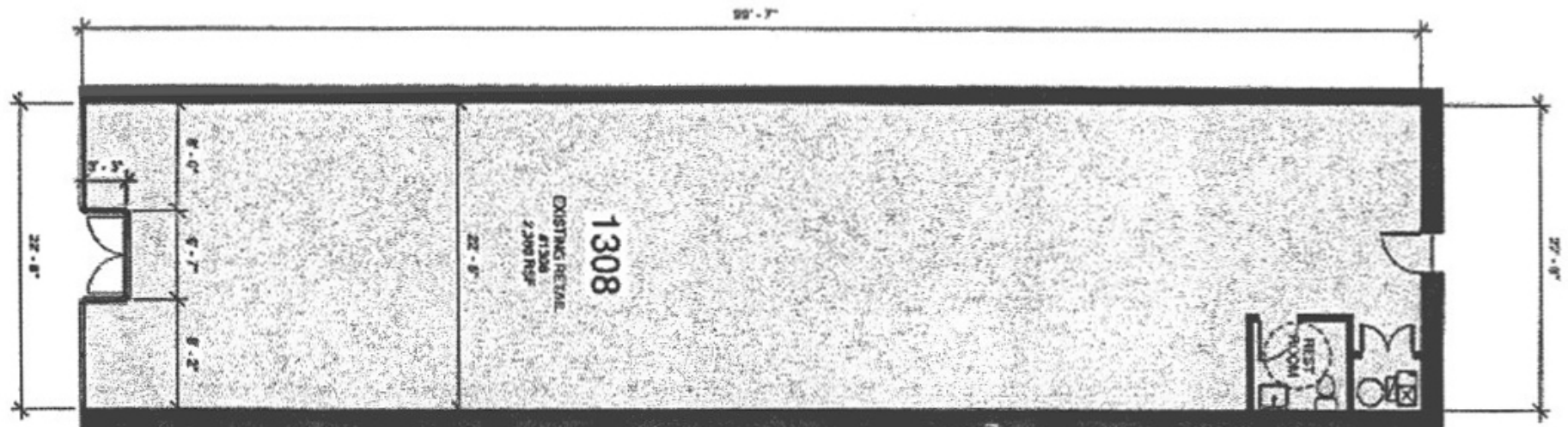
FLOOR PLAN

SPACE AVAILABLE



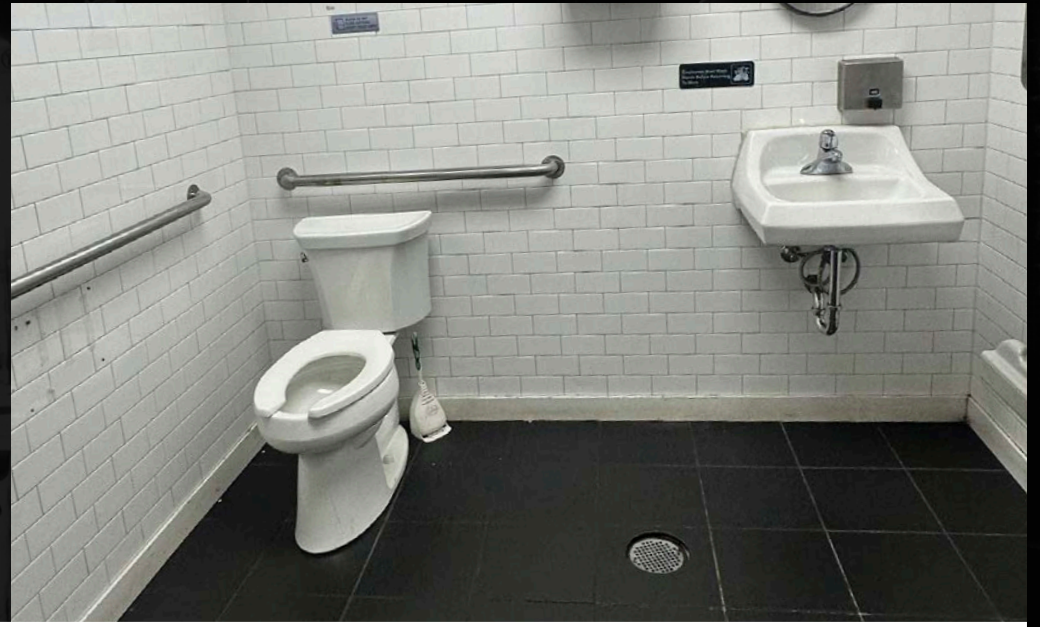
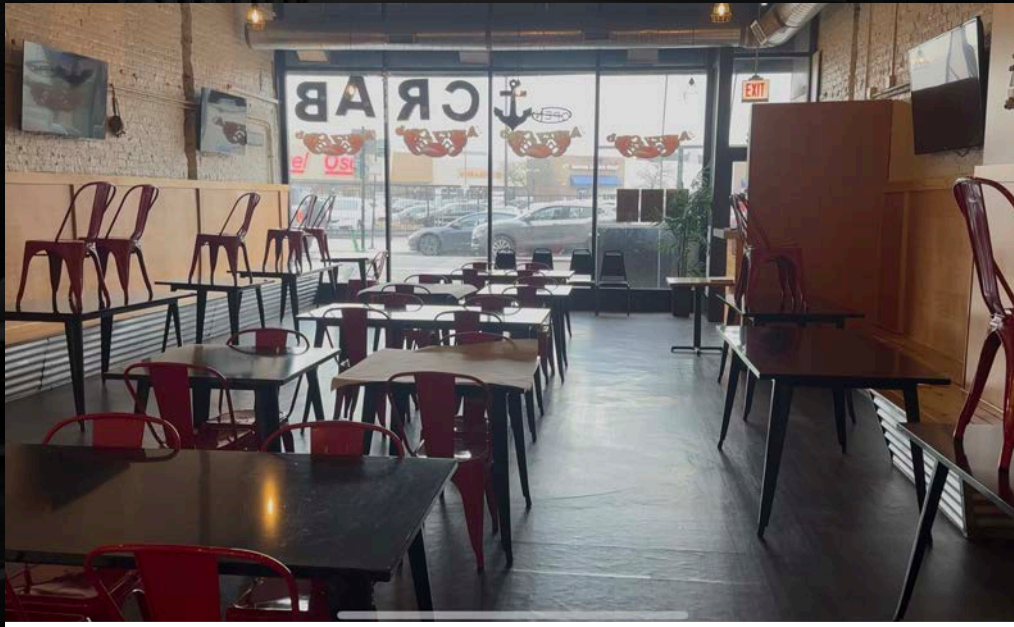
2,380 sqft

Total



CANVAS





Interior Images

CANVAS

STREET MAP

1308 N. Milwaukee Avenue
CHICAGO, ILLINOIS

SPACE FOR LEASE



FOR MORE INFORMATION,
PLEASE CONTACT

ANTHONY CAMPAGNI
ac@canvasrealestate.com
847.651.8669

QUINN THOMAS
qthomas@canvasrealestate.com
847.651.5589

CANVAS

