



1576 N. Milwaukee Avenue

CHICAGO, ILLINOIS

Retail/Restaurant Space For Lease
Southeast corner of Milwaukee and Damen

FOR MORE INFORMATION,
PLEASE CONTACT

ANTHONY CAMPAGNI
ac@canvasrealestate.com
847.651.8669

ELAN RASANSKY
elan@canvasrealestate.com
414.380.1555

DEMOGRAPHICS



67.8k+

Total Population
1 Mile

20.3k+ 4.53k+
0.5 Miles 0.25 Miles



\$178k+

Average HH Income
1 Mile

\$213k+ \$194k+
0.5 Miles 0.25 Miles



54.4k+

Daytime Population
1 Mile

16.9k+ 6.10k+
0.5 Miles 0.25 Miles

BUCKTOWN

- Located at the epicenter of Bucktown/Wicker Park's six-corner intersection at the southeast corner of Milwaukee and Damen Avenues.
- Walking distance to the Blue Line with over 2 million annual riders and the 606 elevated trail.

NEIGHBORING TENANTS

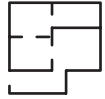
Adidas, Aesop, Arc'Teryx, Barnes & Noble, Bartaco, Big Star, Byline Bank, Cava, Chase Bank, Etta, Le Labo, Lululemon, Small Cheval, Stan's Donuts & Coffee, Sweetgreen, Wells Fargo, Yeti and many more.



CANVAS

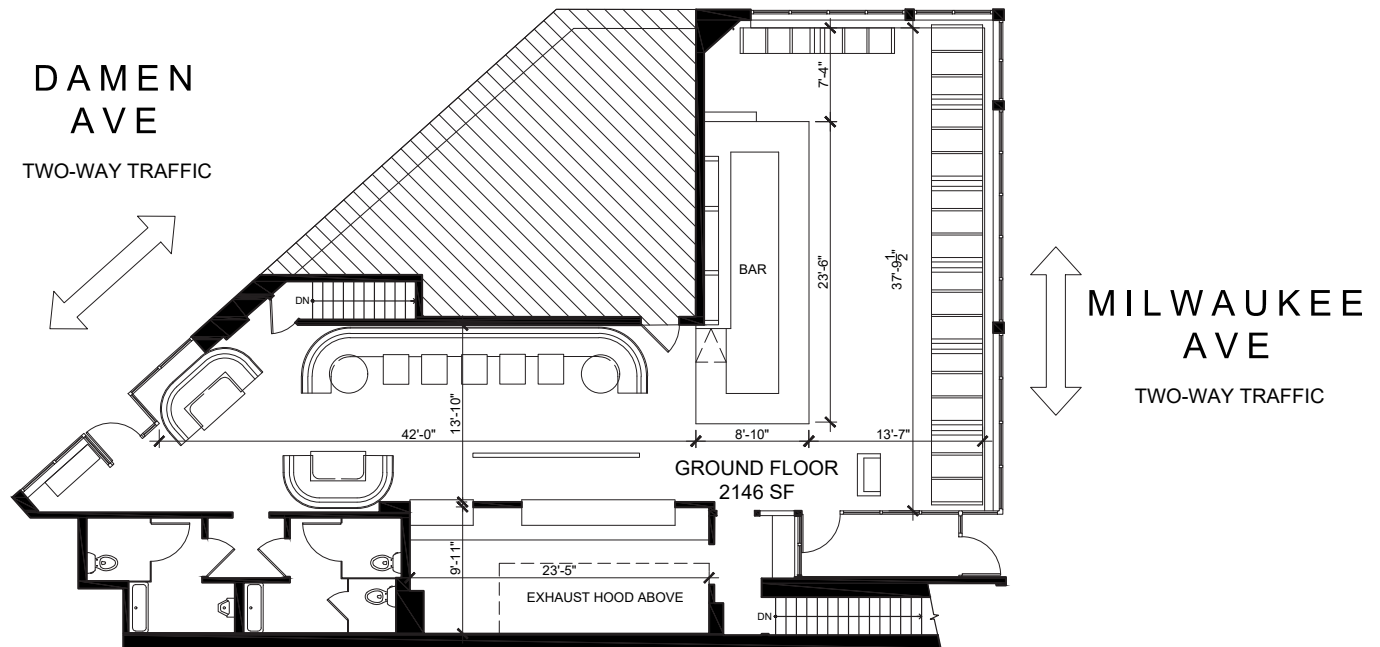
FLOOR PLAN

SPACE AVAILABLE



2,146 sqft

Ground Floor



CANVAS



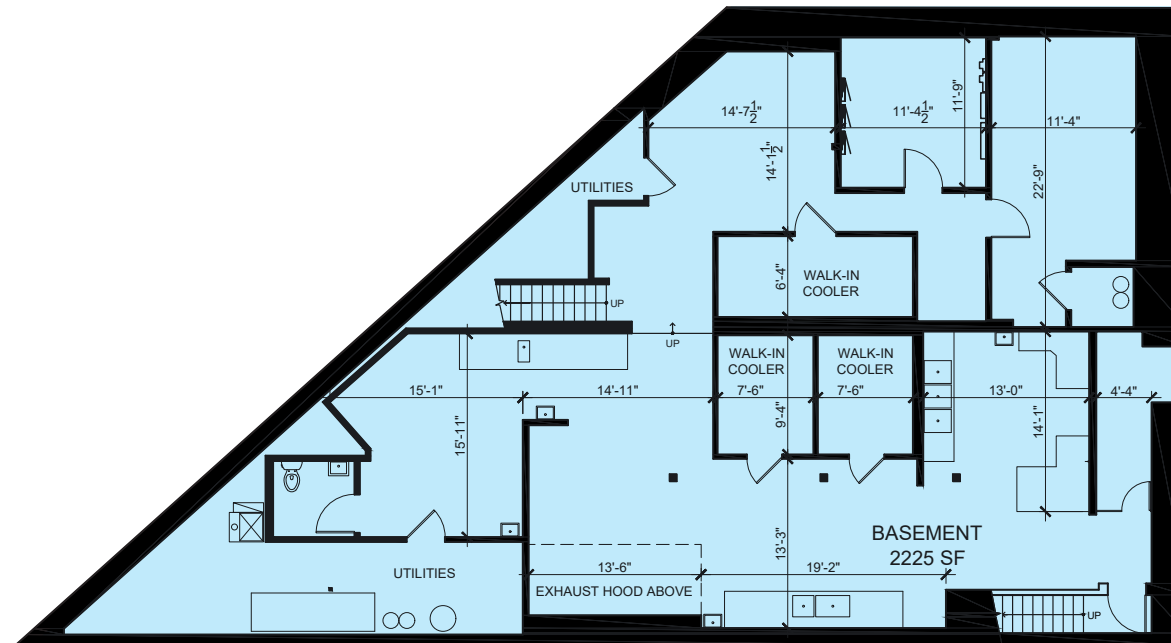
FLOOR PLAN

SPACE AVAILABLE



2,225 sqft

Lower Level



CANVAS



STREET MAP

1576 N. Milwaukee Avenue
CHICAGO, ILLINOIS

SPACE FOR LEASE



FOR MORE INFORMATION,
PLEASE CONTACT

ANTHONY CAMPAGNI
ac@canvasrealestate.com
847.651.8669

ELAN RASANSKY
elan@canvasrealestate.com
414.380.1555

CANVAS

