



23 W. Maple Street

CHICAGO, ILLINOIS

Retail/Restaurant Space For Lease
South block of Maple between State and Dearborn

FOR MORE INFORMATION,
PLEASE CONTACT

ANTHONY CAMPAGNI
ac@canvasrealestate.com
847.651.8669

ELAN RASANSKY
elan@canvasrealestate.com
414.380.1555

DEMOGRAPHICS



107k+

Total Population
1 Mile

45.7k+ 16.3k+
0.5 Miles 0.25 Miles



\$179k+

Average HH Income
1 Mile

\$164k+ \$151k+
0.5 Miles 0.25 Miles



181k+

Daytime Population
1 Mile

52.3k+ 18.8k+
0.5 Miles 0.25 Miles

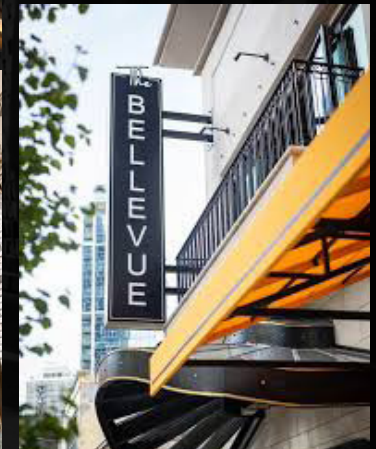
GOLD COAST

23 W. Maple Street is located in Chicago's premier destination for luxury living, shopping, dining and entertainment in the prestigious Gold Coast neighborhood within four blocks of +6,000 keys and 35 hotels, including the Four Seasons, The Waldorf Astoria, The Viceroy, The Ritz Carlton, Thompson Hotel and The Peninsula.

Chicago's Gold Coast is one of the most affluent neighborhoods in the country, with abundant upscale shops, hotels, and restaurants concentrated along Oak, Rush and Walton Streets.

NEIGHBORING TENANTS

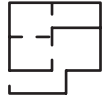
Adalina, Arc'Teryx, Away, Bellevue, Carmine's, Frog Bar & Fish House, Gibson's Bar & Steakhouse, Hugo's, Maple & Ash, Tavern on Rush, ON Running, Warby Parker, Vuori, among many others.



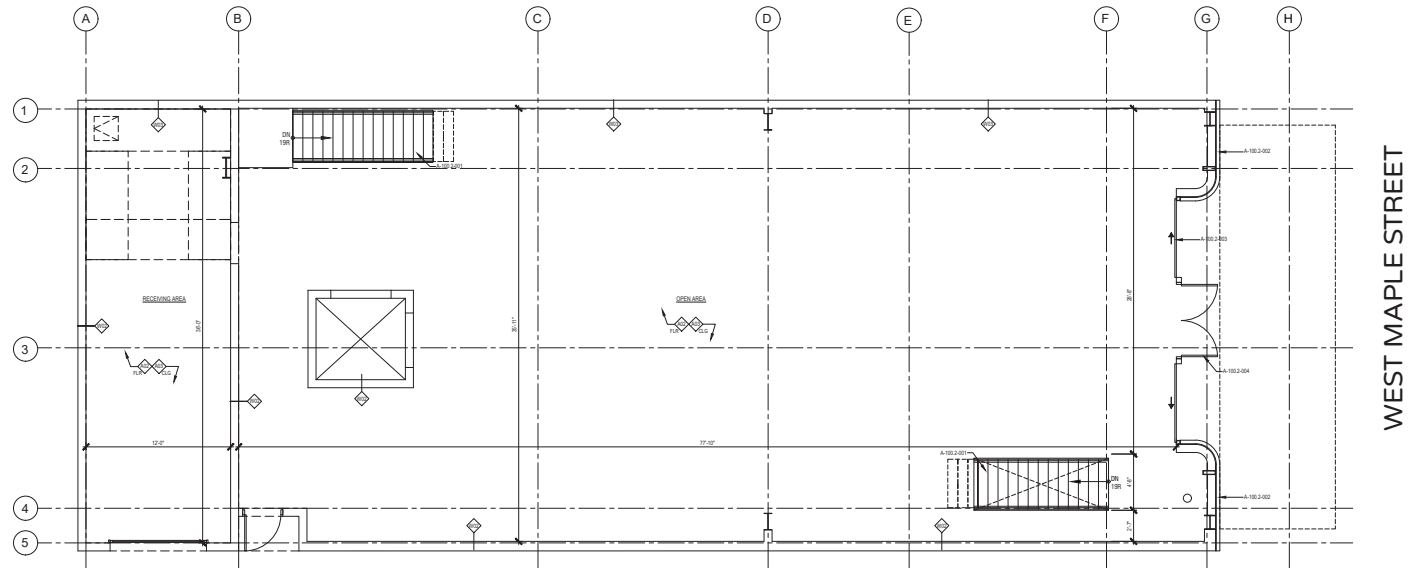
CANVAS

FLOOR PLAN

SPACE AVAILABLE



3,610 sqft
Ground Floor



CANVAS



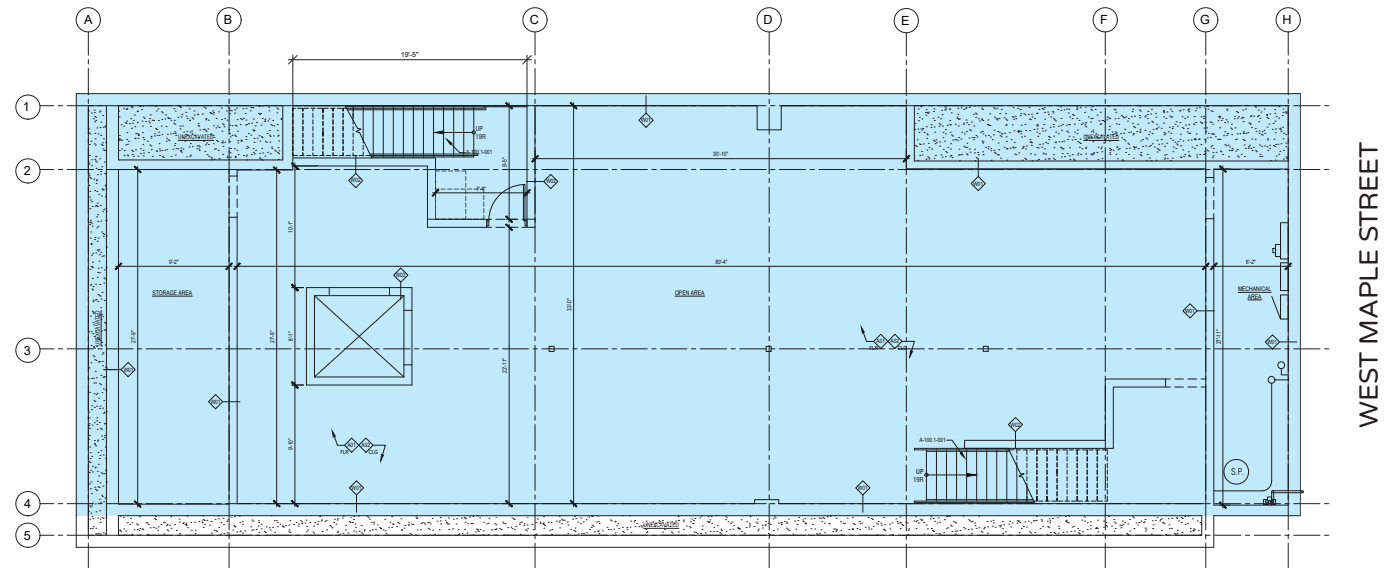
FLOOR PLAN

SPACE AVAILABLE



2,500 sqft

Lower Level



CANVAS



STREET MAP

23 W. Maple Street
CHICAGO, ILLINOIS

SPACE FOR LEASE



FOR MORE INFORMATION,
PLEASE CONTACT

ANTHONY CAMPAGNI
ac@canvasrealestate.com
847.651.8669

ELAN RASANSKY
elan@canvasrealestate.com
414.380.1555

CANVAS

