

RETAIL SPACE  
AVAILABLE FOR LEASE

2827 N. Clark St.  
LAKEVIEW - CHICAGO



CANVAS

## LAKEVIEW

Located at the Northeast block of  
N. Clark between W. Surf and W. Diversey

### HIGHLIGHTS

The Clark/Diversey/Broadway intersection in Chicago is a bustling hub with a mix of retail, dining, and entertainment, attracting diverse foot traffic and easily accessible via public transportation. This vibrant area offers a promising opportunity for retailers seeking to tap into Chicago's dynamic market.

- Space Available: 1,500 SF

### NEIGHBORHOOD RETAILERS

 **2nd STREET**

**bluemercury**  
makeup • skincare • spa

 **CHIPOTLE**

**Dentologie**

**EXPRESS**

**ME** Massage Envy

 **Nando's**  
Peri-Peri

**THE Original**  
**PANCAKE HOUSE**

**Stan's Donuts**  
& COFFEE

**TJ-maxx**

**TRADER JOE'S**

**tropical CAFE**  
SMOOTHIE

## DEMOGRAPHICS



**93.7k+**

Total Population  
1 Mile



**\$156k+**

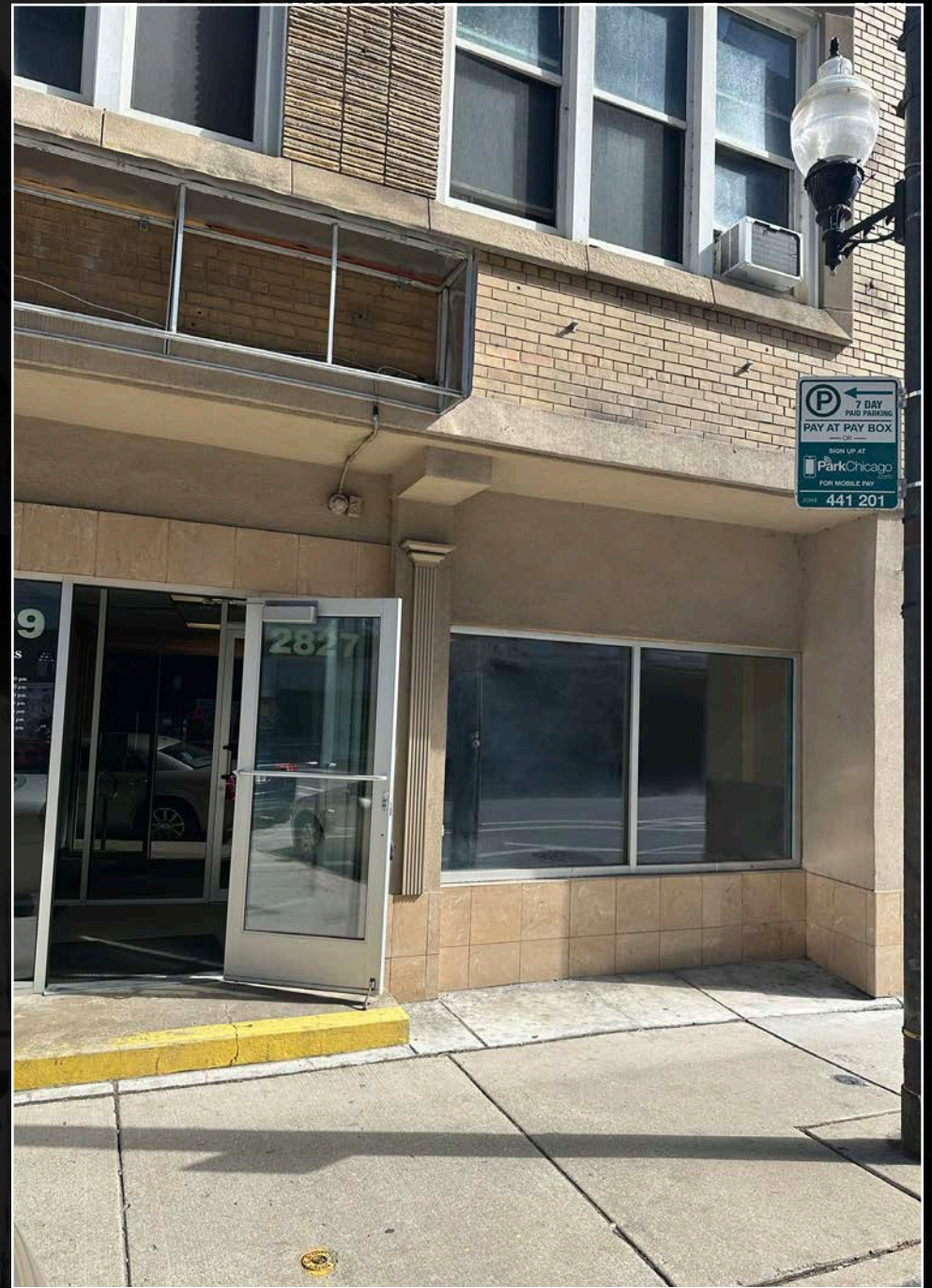
Average HH Income  
1 Mile



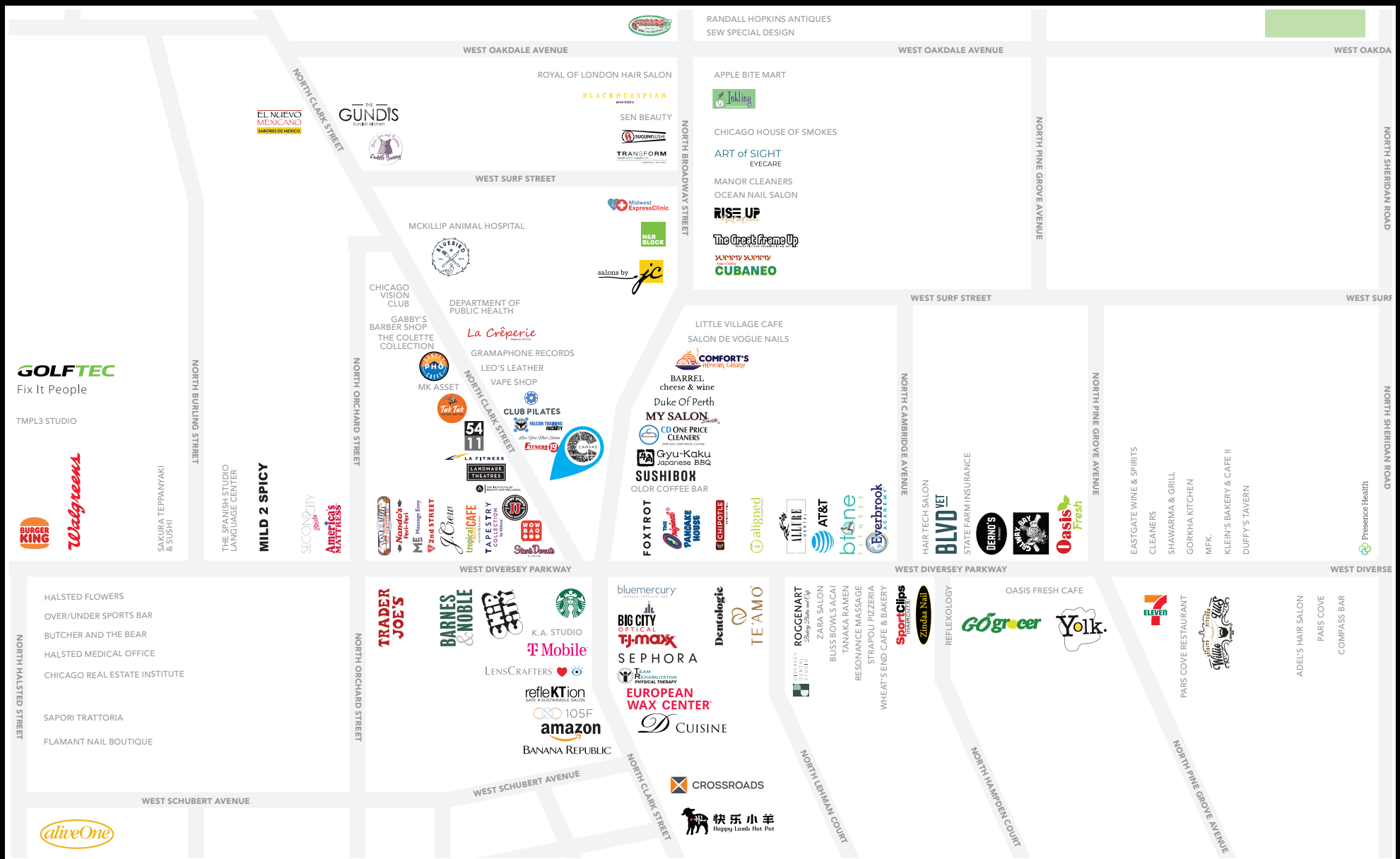
**65.9k+**

Daytime Population  
1 Mile









FOR MORE INFORMATION, PLEASE CONTACT

**ANTHONY CAMPAGNI**  
 ac@canvasrealestate.com  
 847.651.8669

**QUINN THOMAS**  
 qthomas@canvasrealestate.com  
 847.651.5589

CANVAS