



900 W. Armitage Avenue

CHICAGO, ILLINOIS

Retail/Restaurant Space For Lease
Northwest corner of Armitage and Fremont

FOR MORE INFORMATION,
PLEASE CONTACT

ANTHONY CAMPAGNI
ac@canvasrealestate.com
847.651.8669

ELAN RASANSKY
elan@canvasrealestate.com
414.380.1555

DEMOGRAPHICS



69.5k+

Total Population
1 Mile

17.2k+ 5.53k+
0.5 Miles 0.25 Miles



\$194k+

Average HH Income
1 Mile

\$240k+ \$268k+
0.5 Miles 0.25 Miles



63.7k+

Daytime Population
1 Mile

15.2k+ 3.95k+
0.5 Miles 0.25 Miles



34.9k+

Households
1 Mile

7.49k+ 2.53k+
0.5 Miles 0.25 Miles



32.8k+

Median Age
1 Mile

30.9k+ 29.6k+
0.5 Miles 0.25 Miles



1.3M

CTA Riders
(Armitage/Sheffield
Brown L stop)

LINCOLN PARK

Armitage Avenue in Lincoln Park is truly a retail hub and amongst the premier retail corridors in Chicago. It's home to many of the country's most coveted retailers and continues to be highly sought after by new-to-market and direct-to-consumer brands.

It is one of the most walkable corridors in Chicago and benefits from high pedestrian traffic counts given the significant residential density and proximity to CTA Brown/Purple "L" Stop in the immediate area.

- Opportunity to lease the best corner on Armitage Avenue
- 1,975sf of usable lower level space



CANVAS

THE NEIGHBORHOOD

RETAIL

Aēsop.

amazon

BONOBOS

INDOCHINO



Kiehl's
SINCE 1851

Marine Layer

ROTHY'S

SPECIALIZED

State & Liberty

allbirds

bluemercury

BUCK MASON

INTERIOR DEFINE

jenni kayne

LIVELY

monica + andy

SERENA & LILY

TODD SNYDER

WARBY PARKER

WELLNESS

BARRY'S

corepower
YOGA

EQUINOX



KOHLER Waters SPA.

Orangetheory
FITNESS

pure barre

STUDIO///

FOOD/BEVERAGE

ALINEA

ATHENIAN ROOM

BLUE DOOR
FARM STAND

CAFE BA-BA-REEBA!
TAPAS, PINTXOS & SANGRIA

galit

Lou Malnati's
PIZZERIA

拉麵さん
(RAMEN-SAN)

Sweet
Mandy's



SUMMER
HOUSE

ARMITAGE
ALEHOUSE

avli
INSPIRED GREEK

BOKA
RESTAURANT + BAR



juno

Parson's

SMALL Cheval

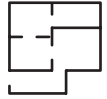
sweetgreen



Sushi Taku
SUSHI-SAN
寿司さん

FLOOR PLANS

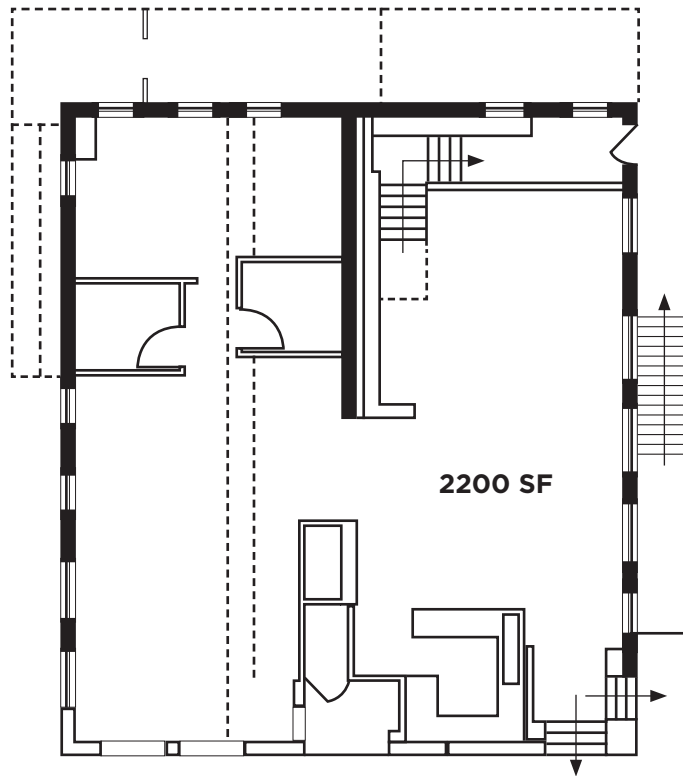
SPACE AVAILABLE



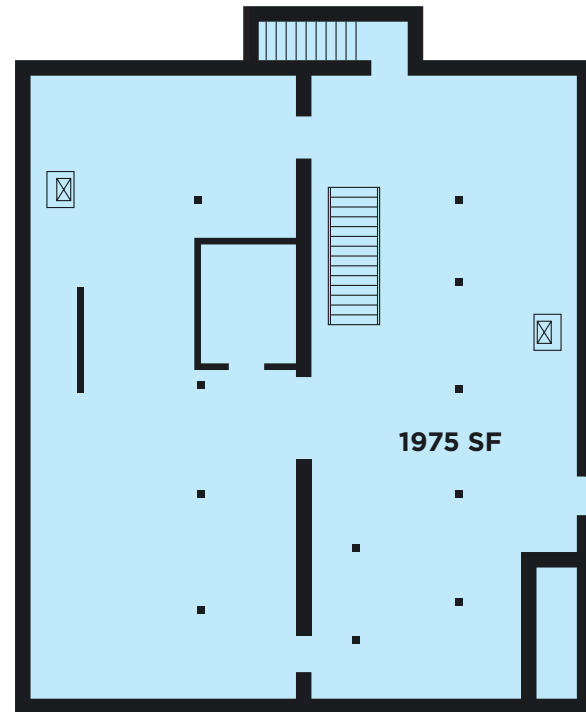
2,200 sqft
Ground Floor



1,975 sqft
Lower Level



Ground Floor
W. ARMITAGE AVENUE



Lower Level
W. ARMITAGE AVENUE

CANVAS



STREET MAP

900 W. Armitage Avenue
CHICAGO, ILLINOIS

SPACE FOR LEASE



FOR MORE INFORMATION,
PLEASE CONTACT

ANTHONY CAMPAGNI

ac@canvasrealestate.com

847.651.8669

ELAN RASANSKY

elan@canvasrealestate.com

414.380.1555

CANVAS

