

THE RETAIL/RESTAURANT OPPORTUNITY AT
— THE —
NEIGHBORHOOD[®]
• HOTEL •



801 W. MADISON

West Loop, Chicago





801 W. MADISON

Located at the heavily trafficked intersection of Madison & Halsted Streets, 801 W. Madison presents a flagship opportunity at the gateway to Chicago's West Loop and Fulton Market District. This bi-level space sits at the base of The Neighborhood Hotel - a new boutique hotel surrounded by the West Loop's dense residential population and Fulton Market's robust office market - enjoying true 7 day-a-week traffic. Historic architecture at a lighted corner intersection in one of the country's most talked about neighborhoods awaits your arrival.



Neighboring Retailers

allbirds

AuCheval

GIRL & THE GOAT

the hoxton

Levain
BAKERY

Madewell

MARIANO'S


MONTEVERDE
Restaurant & Pastificio

NOBU HOTEL

Orangetheory
FITNESS

SOHO HOUSE



ULTA
BEAUTY

Walgreens

WARBY PARKER

WHOLE
FOODS
MARKET

Demographics



152K

Total Population
1.5 Mile Radius



636K

Daytime Population
1.5 Mile Radius



\$176K

Average HH Income
1.5 Mile Radius



34K

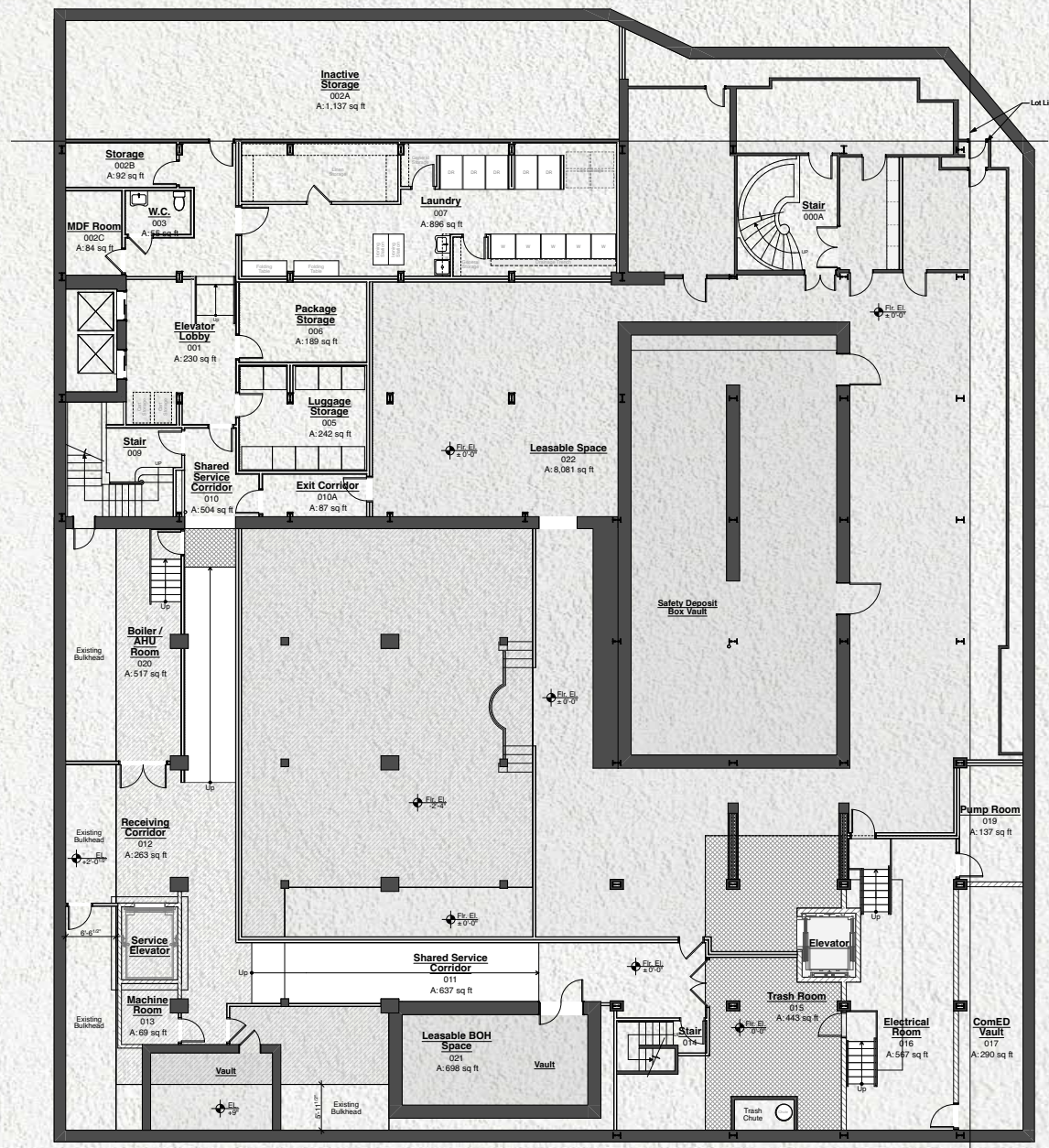
Intersection Vehicles
per Day



MADISON AVE.
(ABOVE)

MADISON AVE.

ALLEY
(BELOW)



1 Basement Plan

SCALE: 1/8" = 1'-0"

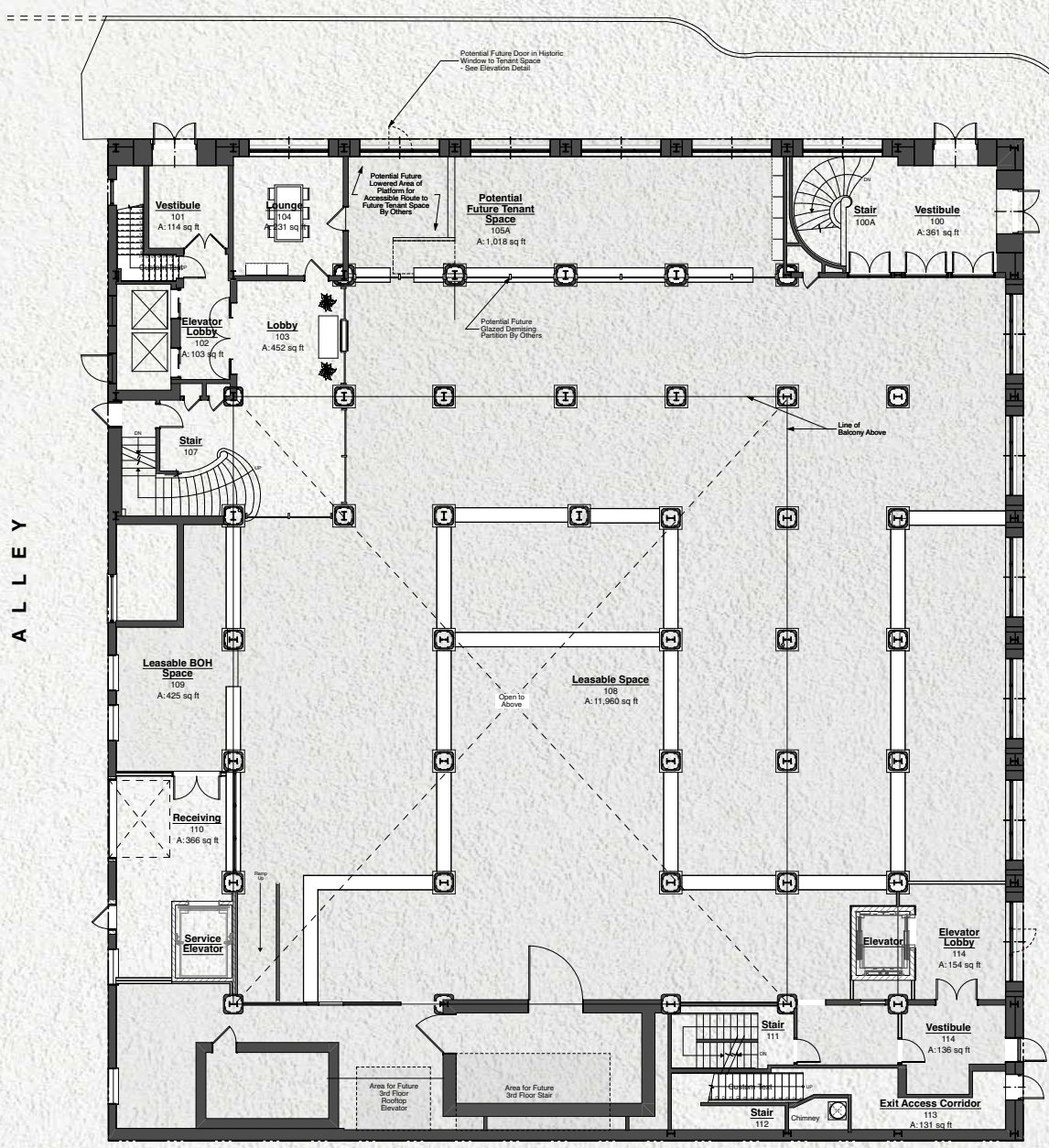
HALSTED ST.
(ABOVE)

Lower Level:

Size:
8,779 square feet

Ceiling Heights:
up to 11 feet

ALLEY



1 1st Floor Plan

SCALE: 1/8" = 1'-0"

HALSTED ST.

Ground Floor

Size:
11,960 square feet


Ceiling Heights:
up to 24 feet


801 W. MADISON

801 W. Madison Street is surrounded by residential towers, hotels, entertainment venues, award-winning eateries, trendy boutiques, and the Fulton Market's next wave of planned & proposed office, retail and residential developments.

Proximity to numerous transportation options and routes makes 801 W. Madison easily accessible to commuters from surrounding suburbs, neighbourhoods or down the street.

- Ogilvie Transportation Center (2-minute drive)
- Chicago Union Station (6-minute drive)
- Morgan Green/Pink Line stop (4-minute drive)
- Clinton Green/Pink Line stop (4-minute drive)
- Highway access at Lake/Randolph (2-minute drive)

 15-minute walk

 Fulton Market District



