



# DEMOGRAPHICS



**54.8k+**  
Total Population  
1 Mile

15.1k+ 3.66k+  
0.5 Miles 0.25 Miles



**\$101k+**  
Average HH Income  
1 Mile

\$102k+ \$106k+  
0.5 Miles 0.25 Miles

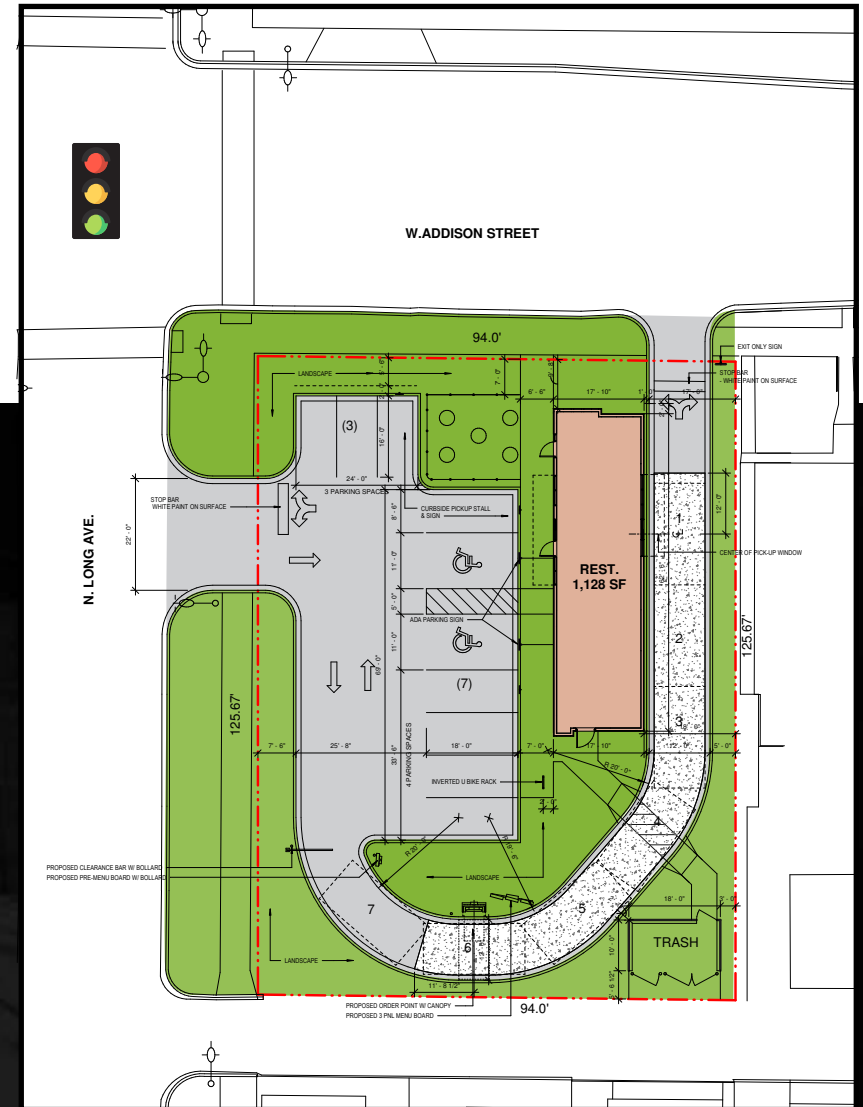


**38.6k+**  
Daytime Population  
1 Mile

10.2k+ 1.88k+  
0.5 Miles 0.25 Miles

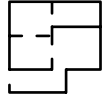
## PORTAGE PARK

- An in-fill intersection on the northwest side of Chicago.
- Multiple potential building uses including drive-thru restaurant, retail auto use and medical with flexibility on design
- Over 14,400 vehicles per day
- Dense surrounding residential population and commercial daytime traffic



# EXISTING CONDITION

## LAND AREA



**11,813** sf

Total

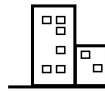
## PARKING



**12**

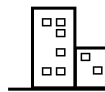
Spaces

## FRONTAGE



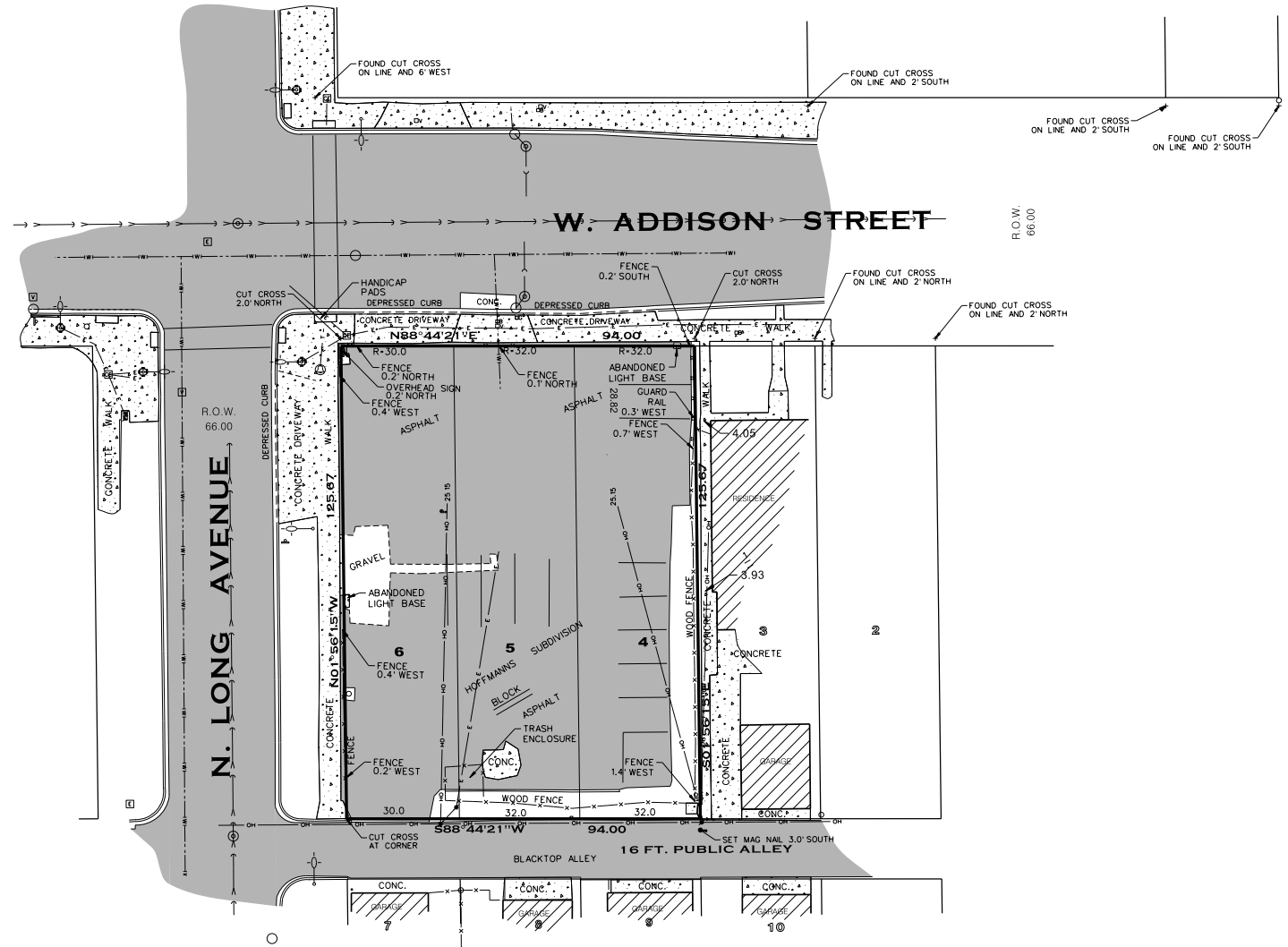
**95'**

on W. Addison



**125'**

on N. Long



CANVAS



# AERIAL MAP



**5357 W. ADDISON STREET**

FOR MORE INFORMATION, PLEASE CONTACT

ANTHONY CAMPAGNI  
ac@canvasrealestate.com  
847.651.8669

ELAN RASANSKY  
elan@canvasrealestate.com  
414.380.1555

MICHAEL WALLACE  
mwallace@canvasrealestate.com  
614.537.2403



CANVAS