

CANVAS



75 WEST ELM STREET

• SPACE FOR LEASE •

THE PROPERTY

75 W. Elm is located in Chicago's affluent Gold Coast neighborhood, an area offering an abundance of dining and shopping options, while surrounded by one of the City's most dense and sought after residential markets. The space features direct elevator access with ample garage parking located directly above.

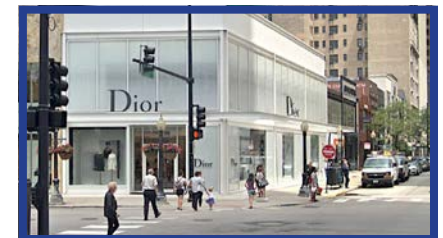
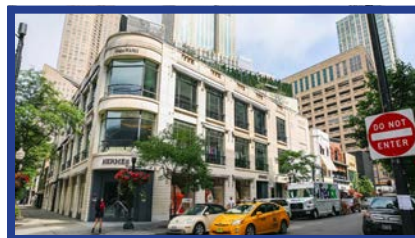
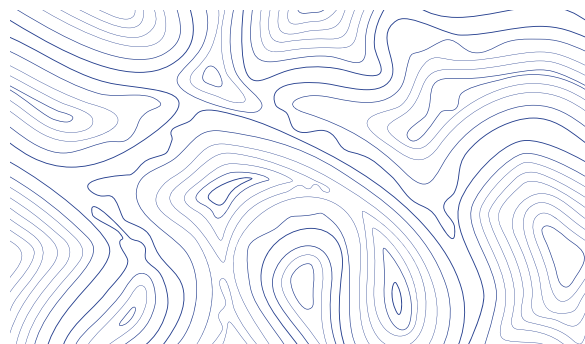
THE NEIGHBORHOOD

Chicago's Gold Coast epitomizes Chicago luxury: affluent residents, premium property values, and sophisticated consumers come together to draw in elite retailers and restaurateurs. 75 West Elm presents a unique opportunity to occupy a larger footprint to welcome a range of options for both retailers and/or food and beverages operators to call the Gold Coast their home.

IN THE AREA

Notable Retailers: Aritzia, Amiri, Brandy Melville, Cartier, Chanel, Dior, Gibson's, Glossier, Golden Goose, Graff, Hermes, Lululemon, Moncler, ON Running, Rag & Bone, Saint Laurent, Stone Island, Versace, and Vuori.

Notable Restaurants: Adalina, Gibson's, Hugo's Frog Bar, Maple & Ash, Le Colonial, Lux Bar, Sparrow, Tavern On Rush, The Bellevue, Carmine's, and Lou Malnati's.



DEMOGRAPHICS

101K+
Total Population
1 Mile

\$177K+
Average HH Income
1 Mile

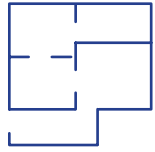


154K+
Daytime Population
1 Mile

2.5M+
Clark & Division
Annual Riders



FLOOR PLAN



SINGLE TENANT SCENARIO

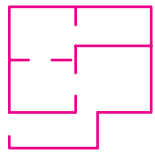
20,728 SQFT



TWO TENANT SCENARIO

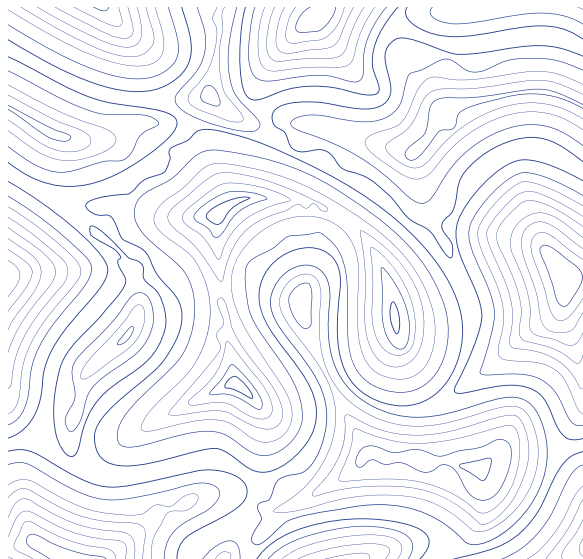
TENANT 1

7,446 SQFT

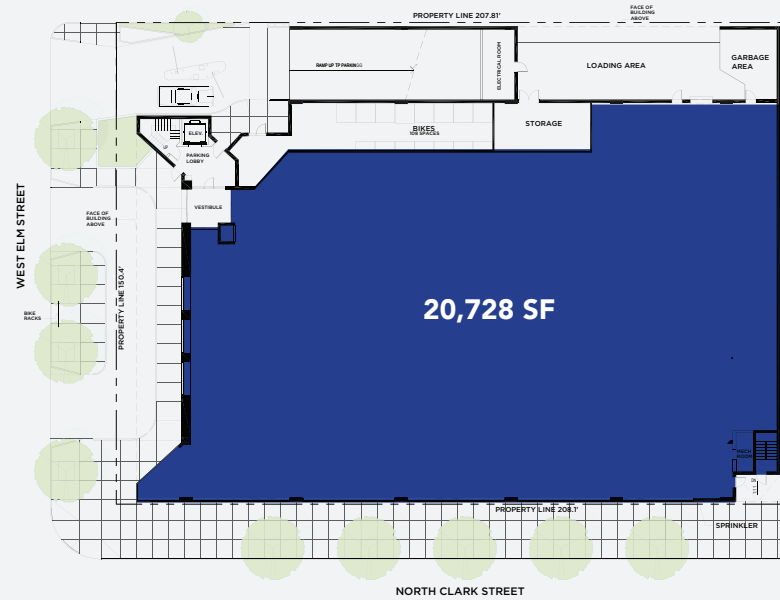


TENANT 2

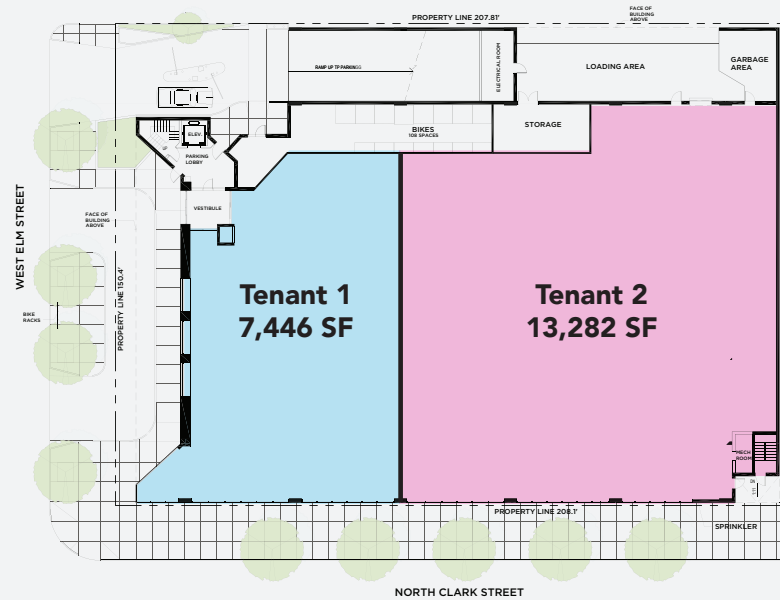
13,282 SQFT



SINGLE TENANT SCENARIO



TWO TENANT SCENARIO



FOR MORE INFORMATION, PLEASE CONTACT



ANTHONY CAMPAGNI

ac@canvasrealestate.com

847.651.8669

ELAN RASANSKY

elan@canvasrealestate.com

414.380.1555

QUINN THOMAS

qthomas@canvasrealestate.com

847.651.5589