



5220 S. Harper

HYDE PARK, ILLINOIS

Retail Space for Lease

West block of Harper
between 52nd and 53rd

**FOR MORE INFORMATION,
PLEASE CONTACT**

ANTHONY CAMPAGNI
ac@canvasrealestate.com
847.651.8669

ELAN RASANSKY
elan@canvasrealestate.com
414.380.1555

MICHAEL WALLACE
mwallace@canvasrealestate.com
614.537.2403



DEMOGRAPHICS



499k+

Total Population
5 Miles

195k+ 45.5k+
3 Miles 1 Mile



\$74.1k+

Average HH Income
5 Miles

\$69.7k+ \$103k+
3 Miles 1 Mile



448k+

Daytime Population
5 Miles

190k+ 45.8k+
3 Miles 1 Mile

HYDE PARK

Located just six miles south of Downtown Chicago on the southwest shore of Lake Michigan, Hyde Park is anchored by the University of Chicago and home to some of the area's most popular tourist destinations, such as the Museum of Science and Industry, the Frank Lloyd Wright Robie House, and the The Barack Obama Presidential Center. Since 1892, Hyde Park has been home to The University of Chicago. The university encompasses some 200 acres, features an enrollment of 16,445 students, and employs approximately 22,000 people, many living in the immediate neighborhood.

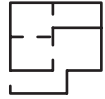
- Located across the street from Harper Court. Situated at the ground floor of a renovated 64-unit residential apartment building.



CANVAS

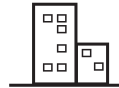
5220 S. HARPER FLOOR PLAN

SPACE AVAILABLE



1,160 sqft
Ground Level

FRONTAGE

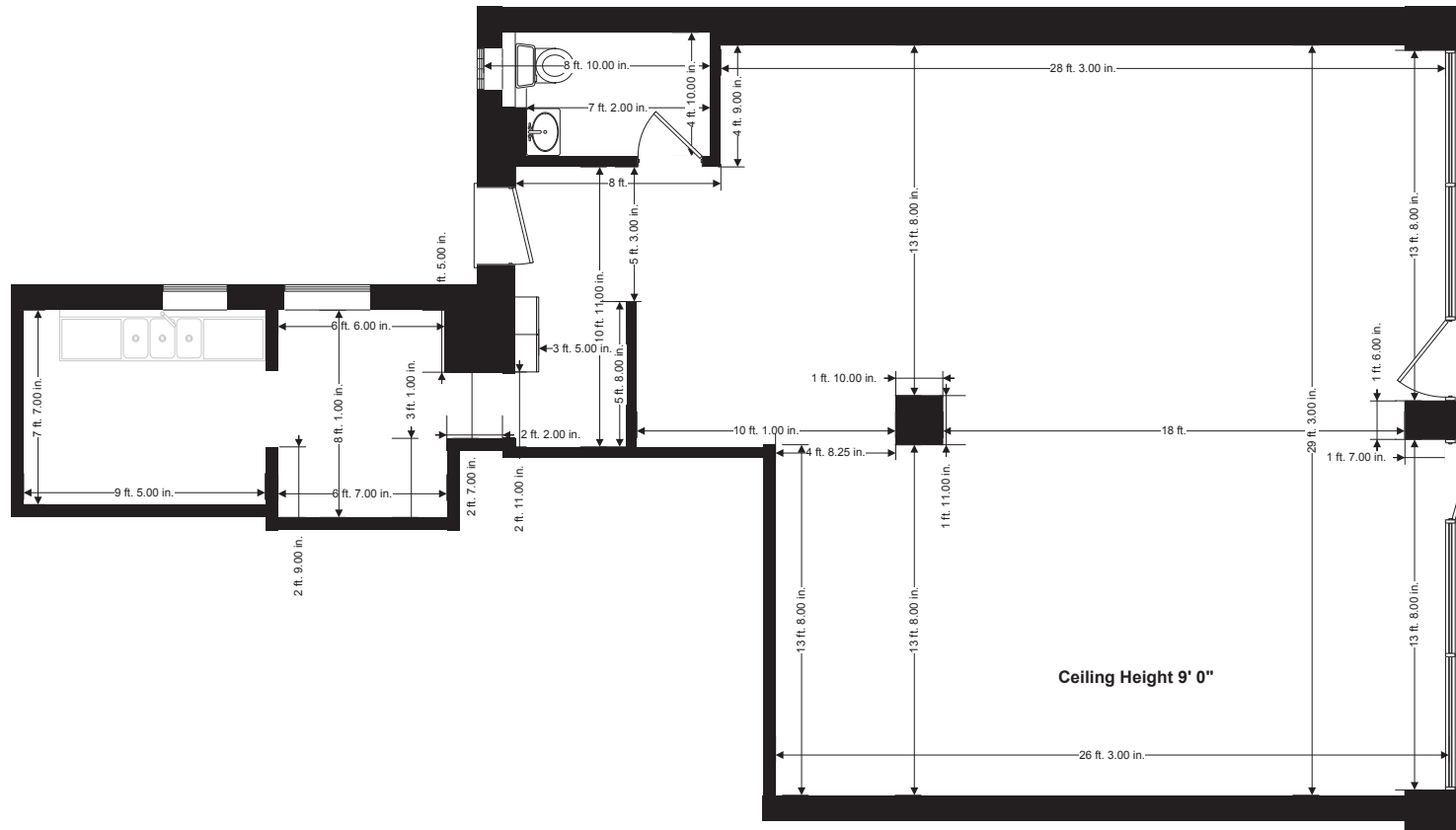


30'
on Harper Avenue

CEILING HEIGHT



9 ft
Ground Level



S. HARPER AVENUE

CANVAS



5224 S. HARPER FLOOR PLAN

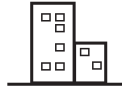
SPACE AVAILABLE



825 sqft

Ground Level

FRONTAGE



25'

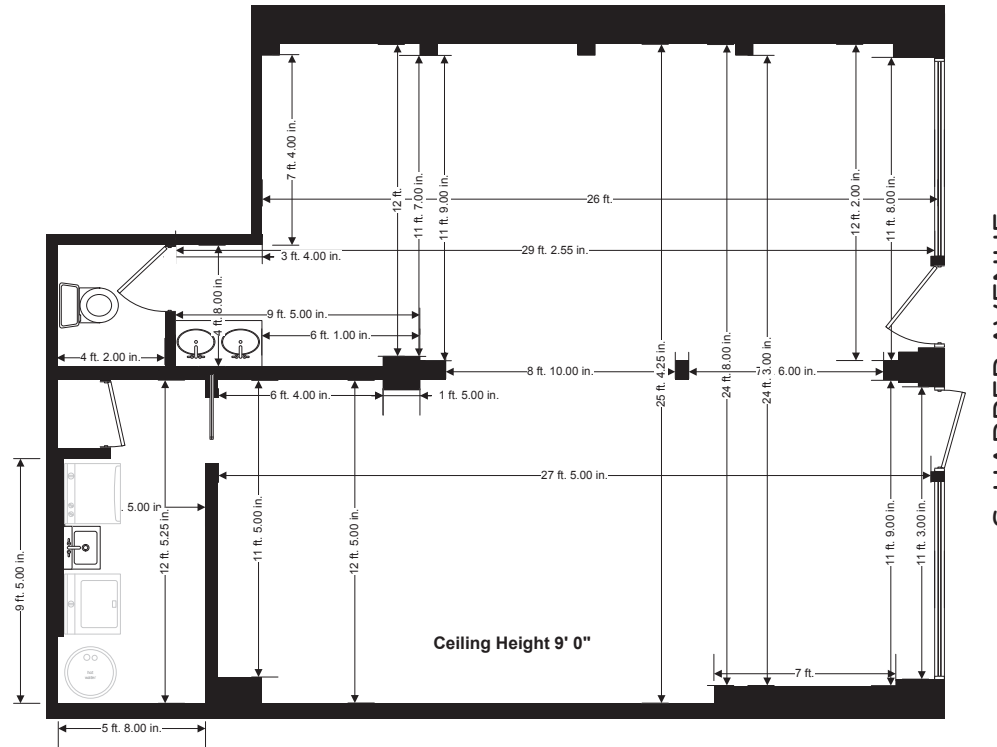
on Harper Avenue

CEILING HEIGHT



9 ft

Ground Level



CANVAS



STREET MAP

5220 S. HARPER AVENUE



SITE AERIAL



FOR MORE INFORMATION, PLEASE CONTACT

ANTHONY CAMPAGNI
ac@canvasrealestate.com
847.651.8669

ELAN RASANSKY
elan@canvasrealestate.com
414.380.1555

MICHAEL WALLACE
mwallace@canvasrealestate.com
614.537.2403



CANVAS