



11500 S. Pulaski Road

ALSIP, ILLINOIS

Retail/Office Space for Lease
Southwest corner of W. 115th & S. Pulaski

FOR MORE INFORMATION, PLEASE CONTACT

ANTHONY CAMPAGNI • 847.651.8669
ac@canvasrealestate.com

ELAN RASANSKY • 414.380.1555
elan@canvasrealestate.com

MICHAEL WALLACE • 614.537.2403
mwallace@canvasrealestate.com

DEMOGRAPHICS



383k+

Total Population
5 Miles

134k+ 17.1k+
3 Miles 1 Mile



\$98.9k+

Average HH Income
5 Miles

\$109k+ \$117k+
3 Miles 1 Mile



337k+

Daytime Population
5 Miles

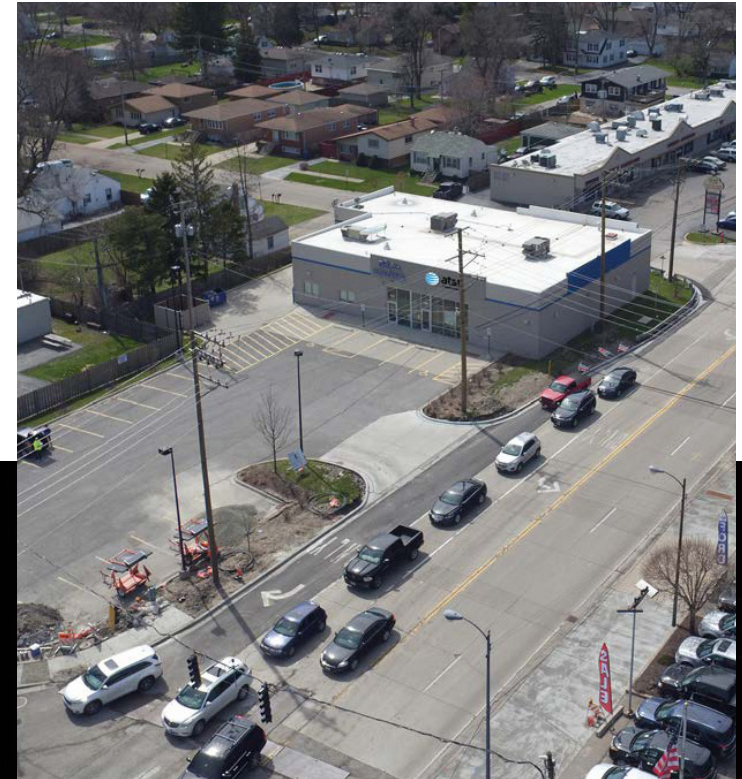
128k+ 11.8k+
3 Miles 1 Mile

ALSIP

- 3,174 SF space available next to DaVita Dialysis
- Located at the intersection of West 115th & South Pulaski
- Strong traffic counts, with 44,600 vehicles passing by everyday
 - 29,500 VPD along S Pulaski
 - 15,100 VPD along W 115th

NEIGHBORING RETAILERS

ALDI, El Don Pollo Y Carne Al Carbon, Firewater BBQ, Ford, Jewel Osco, Las Fuentes, Mariscos Estilo Nayarit, Marist High School, McDonald's, NICKY'S The Real McCoy, Poor Dog, Russo's, Star Daze and more.



CANVAS

SITE SURVEY

SPACE AVAILABLE



3,174 sqft

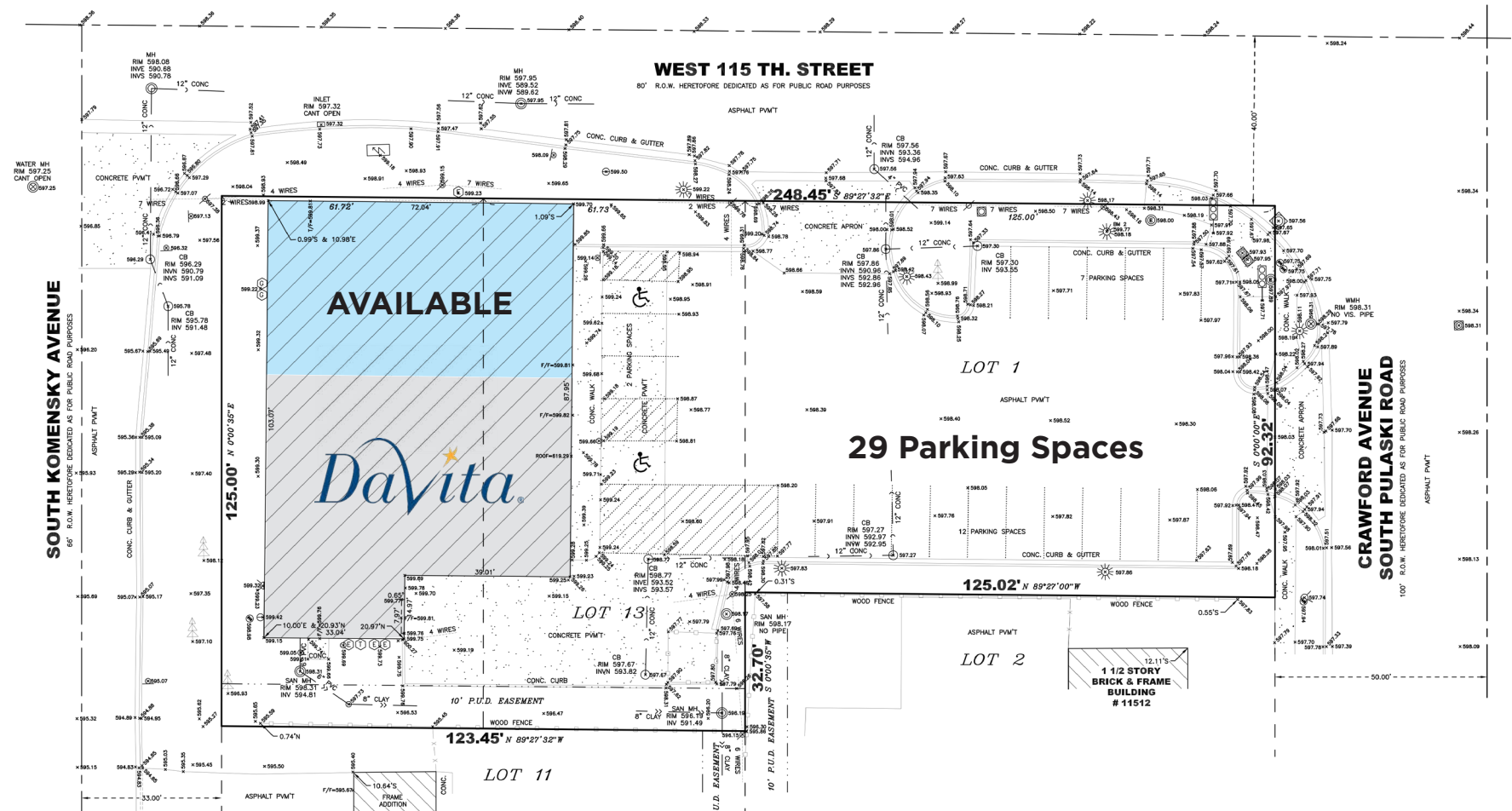
Total

PARKING



29

Parking Spaces



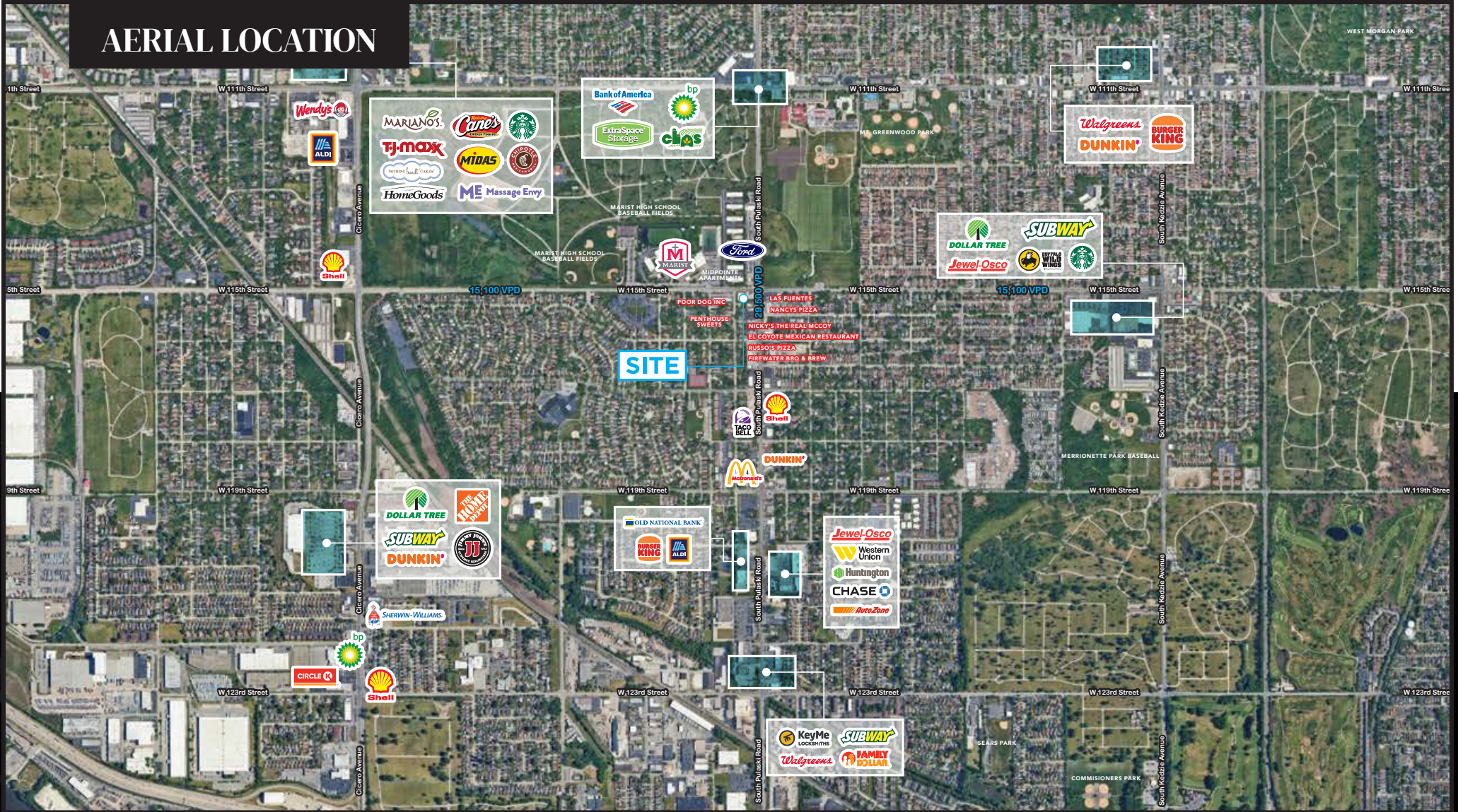
CANVAS





CANVAS

AERIAL LOCATION



FOR MORE INFORMATION, PLEASE CONTACT

ANTHONY CAMPAGNI
 ac@canvasrealestate.com
 847.651.8669

ELAN RASANSKY
 elan@canvasrealestate.com
 414.380.1555

MICHAEL WALLACE
 mwallace@canvasrealestate.com
 614.537.2403



CANVAS