



1101 W. Lawrence Avenue

CHICAGO, ILLINOIS

Retail Space for Lease
Southwest corner of Lawrence & Winthrop

FOR MORE INFORMATION, PLEASE CONTACT

ANDREW BECKER • 312.231.2600
abecker@canvasrealestate.com

ELAN RASANSKY • 414.380.1555
elan@canvasrealestate.com

MICHAEL WALLACE • 614.537.2403
mwallace@canvasrealestate.com

DEMOGRAPHICS



75.9k+

Total Population
1 Mile

31.3k+ 8.47k+
0.5 Miles 0.25 Miles



\$107k+

Average HH Income
1 Mile

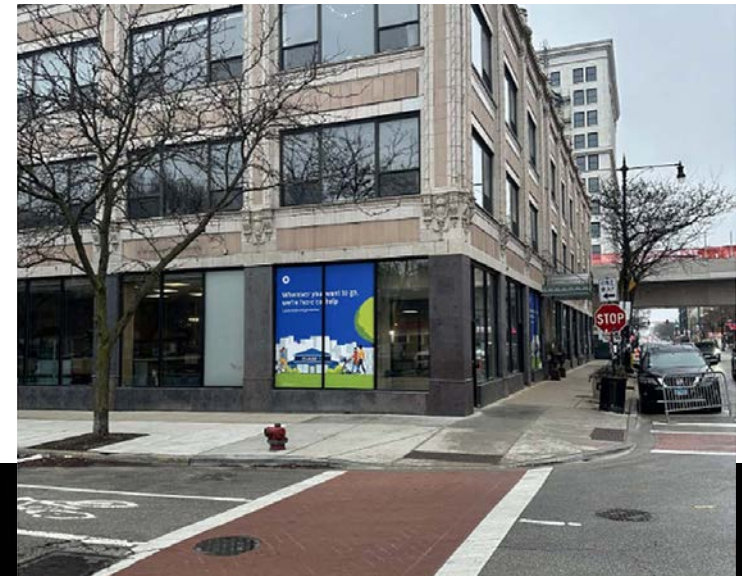
\$87.1k+ \$92.8k+
0.5 Miles 0.25 Miles



57.4k+

Daytime Population
1 Mile

25.1k+ 6.52k+
0.5 Miles 0.25 Miles



UPTOWN

- Corner unit on ground floor of three-story mixed-use condo building in Uptown
- Former Chase Bank at the corner of W Lawrence and N Winthrop
- Adjacent to the “Lawrence” CTA Red Line stop (re-opening Summer 2025)
- Close proximity to the Byline Bank Aragon Ballroom (250,000 annual visitors) and The Riviera Theatre (100,000 annual visitors)

NEIGHBORING RETAILERS

Agami Sushi, Aragon Ballroom, Demera Restaurant, Fiesta Mexicana Restaurants, First Ascent, Rosati’s Pizza, The Baton Show Lounge, The Riviera Theatre, Uptown Lounge, Uptown Theatre and more.



CANVAS

SITE PLAN



Byline Bank
Aragon Ballroom

15,000 VPD

W. LAWRENCE AVENUE

15,000 VPD

N. CLIFTON AVENUE



N. WINTHROP AVENUE

**10 Dedicated
Parking Spaces
AVAILABLE FOR LEASE**

The Winnie
Uptown Apartments
(84 Units)



Up to **6,050 sqft**
Space Available

CANVAS

FLOOR PLAN

SPACE AVAILABLE



2,800 sqft

Tenant A



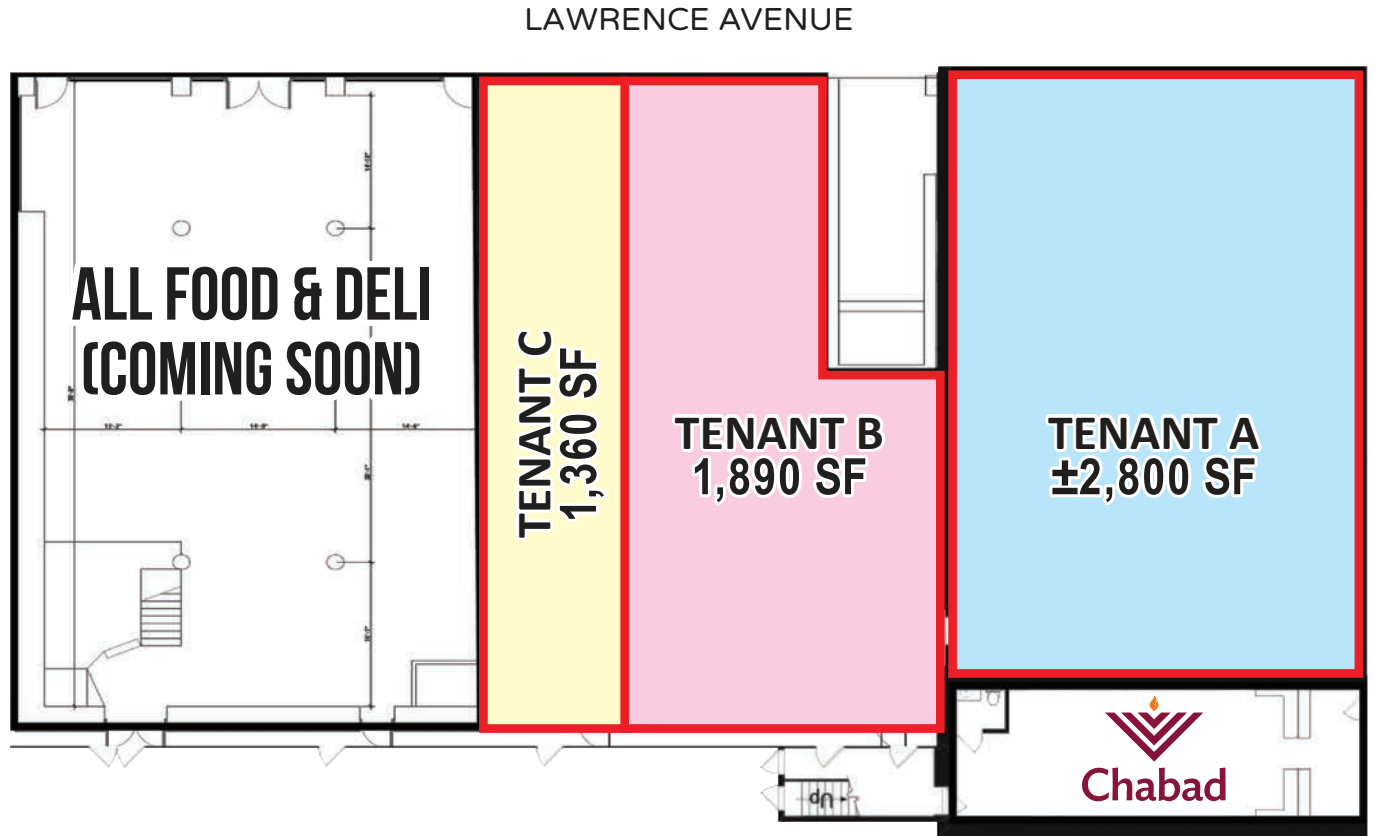
1,890 sqft

Tenant B



1,360 sqft

Tenant C



CANVAS



STREET MAP

1101 W. Lawrence Avenue
CHICAGO, ILLINOIS

SPACE AVAILABLE



FOR MORE INFORMATION,
PLEASE CONTACT

ANDREW BECKER
abecker@canvasrealestate.com
312.231.2600

ELAN RASANSKY
elan@canvasrealestate.com
414.380.1555

MICHAEL WALLACE
mwallace@canvasrealestate.com
614.537.2403

CANVAS

