

RETAIL SPACE
AVAILABLE FOR LEASE

1101 W. Lawrence Ave. UPTOWN - CHICAGO



CANVAS

UPTOWN

Located at Southwest corner of
Lawrence and Winthrop

HIGHLIGHTS

- Corner unit on ground floor of three-story mixed-use condo building in Uptown
- Former Chase Bank at the corner of W Lawrence and N Winthrop
- Adjacent to the "Lawrence" CTA Red Line stop (re-opening Summer 2025)
- Close proximity to the Byline Bank Aragon Ballroom (250,000 annual visitors) and The Riviera Theatre (100,000 annual visitors)

NEIGHBORHOOD RETAILERS

- Agami Sushi, Aragon Ballroom, Demera Restaurant, Fiesta Mexicana Restaurants, First Ascent, Rosati's Pizza, The Baton Show Lounge, The Riviera Theatre, Uptown Lounge, Uptown Theatre and more.

DEMOGRAPHICS



75.9k+

Total Population
1 Mile



\$107k+

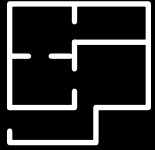
Average HH Income
1 Mile



57.4k+

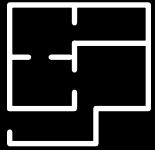
Daytime Population
1 Mile

SPACE AVAILABLE



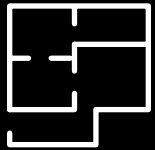
2,800 sf

Tenant A (IN LEASE)



1,890 sf

Tenant B (IN LEASE)

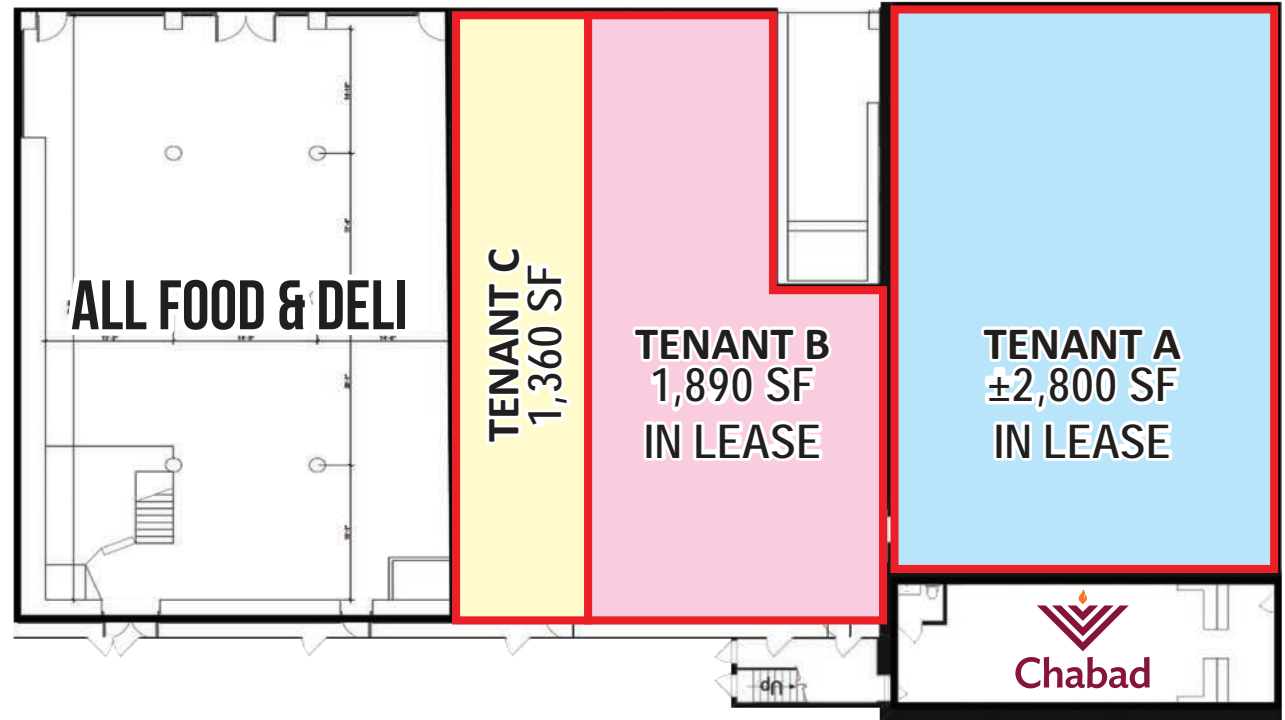


1,360 sf

Tenant C

SITE PLAN

LAWRENCE AVENUE

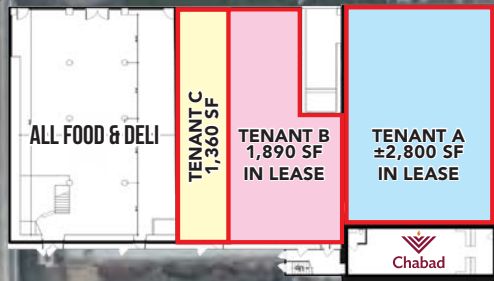




**Byline Bank
Aragon Ballroom**

W. LAWRENCE AVENUE

15,000 VPD

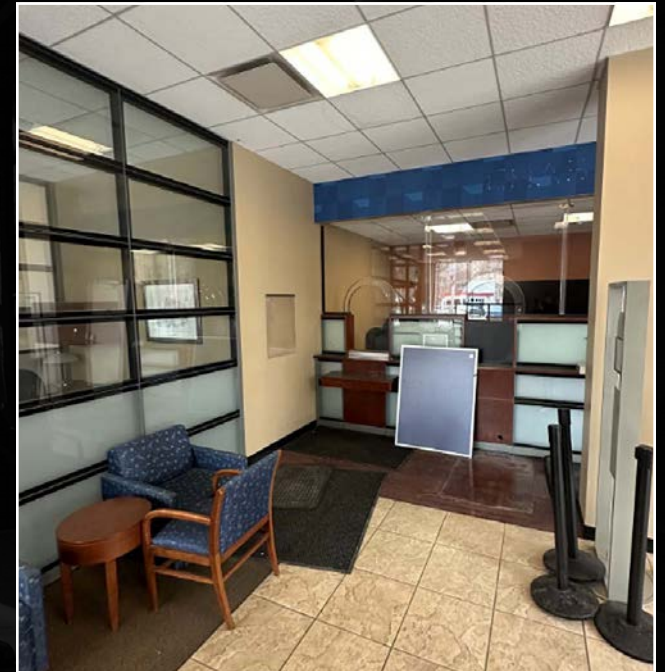


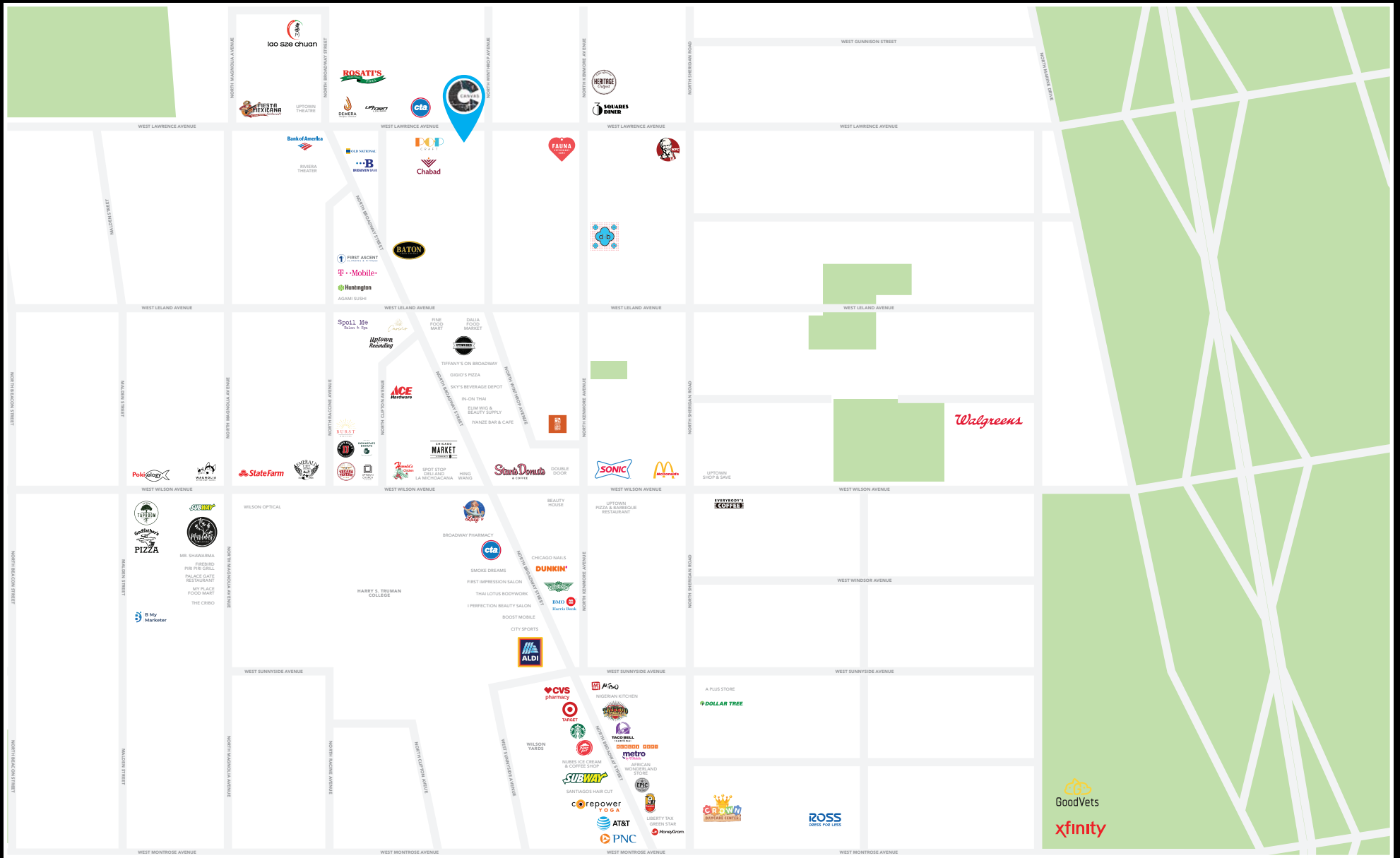
N. WINTHROP AVENUE

**10 Dedicated
Parking Spaces
AVAILABLE FOR LEASE**

**The Winnie
Uptown Apartments
(84 Units)**

**UP
TO 6,050 sf
SPACE AVAILABLE**





FOR MORE INFORMATION, PLEASE CONTACT

ANDREW BECKER
 abecker@canvasrealestate.com
 312.231.2600

ELAN RASANSKY
 elan@canvasrealestate.com
 414.380.1555

MICHAEL WALLACE
 mwallace@canvasrealestate.com
 614.537.2403

CANVAS

2211 North Elston Avenue,
 Suite 307, Chicago
 www.canvasrealestate.com