

RETAIL/RESTAURANT SPACE  
AVAILABLE FOR LEASE

1953 N. Clybourn Ave.  
LINCOLN PARK - CHICAGO



CANVAS

# LINCOLN PARK

Located at the Southeast corner of  
Clybourn, Cortland and Racine

# DEMOGRAPHICS

## HIGHLIGHTS

- Clybourn corridor retail opportunities at the signalized intersection of N. Clybourn, N. Racine, and W. Cortland
- Up to 8,380 SF available with significant branding opportunity and 56' of frontage along Clybourn
- Strong traffic counts along Clybourn Avenue - 11,700 VPD
- Brand-new two-story entry tower available for Retail C

## NEIGHBORHOOD RETAILERS



### 56.8k+

Total Population  
1 Mile



### \$214k+

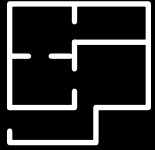
Average HH Income  
1 Mile



### 58.6k+

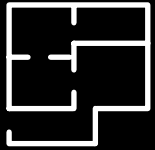
Daytime Population  
1 Mile

# SPACE AVAILABLE



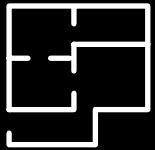
**1,157 sf**

Retail A



**675 sf**

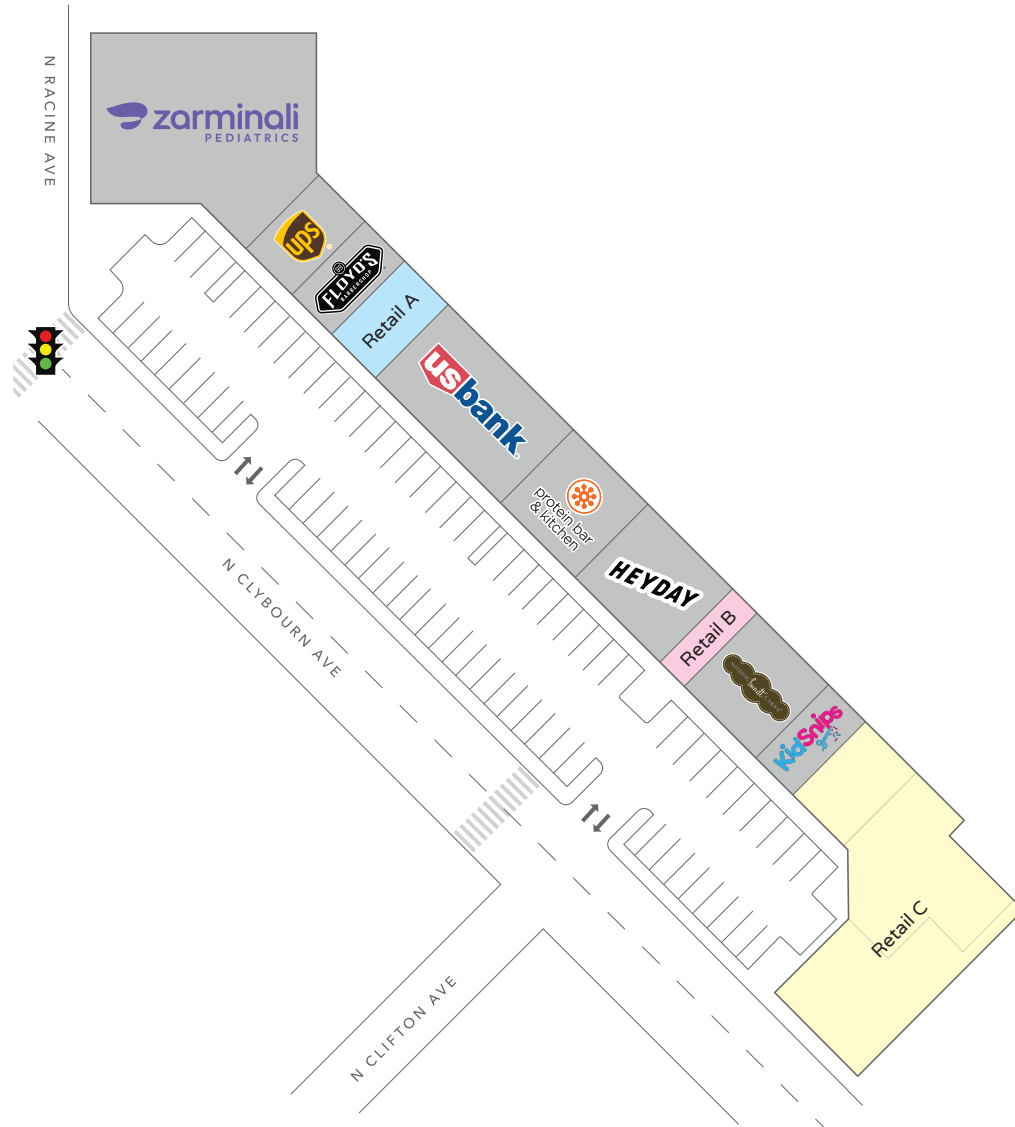
Retail B



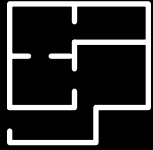
**8,380 sf**

Retail C

# SITE PLAN

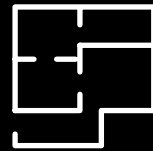


# SPACE AVAILABLE



**3,880 sf**

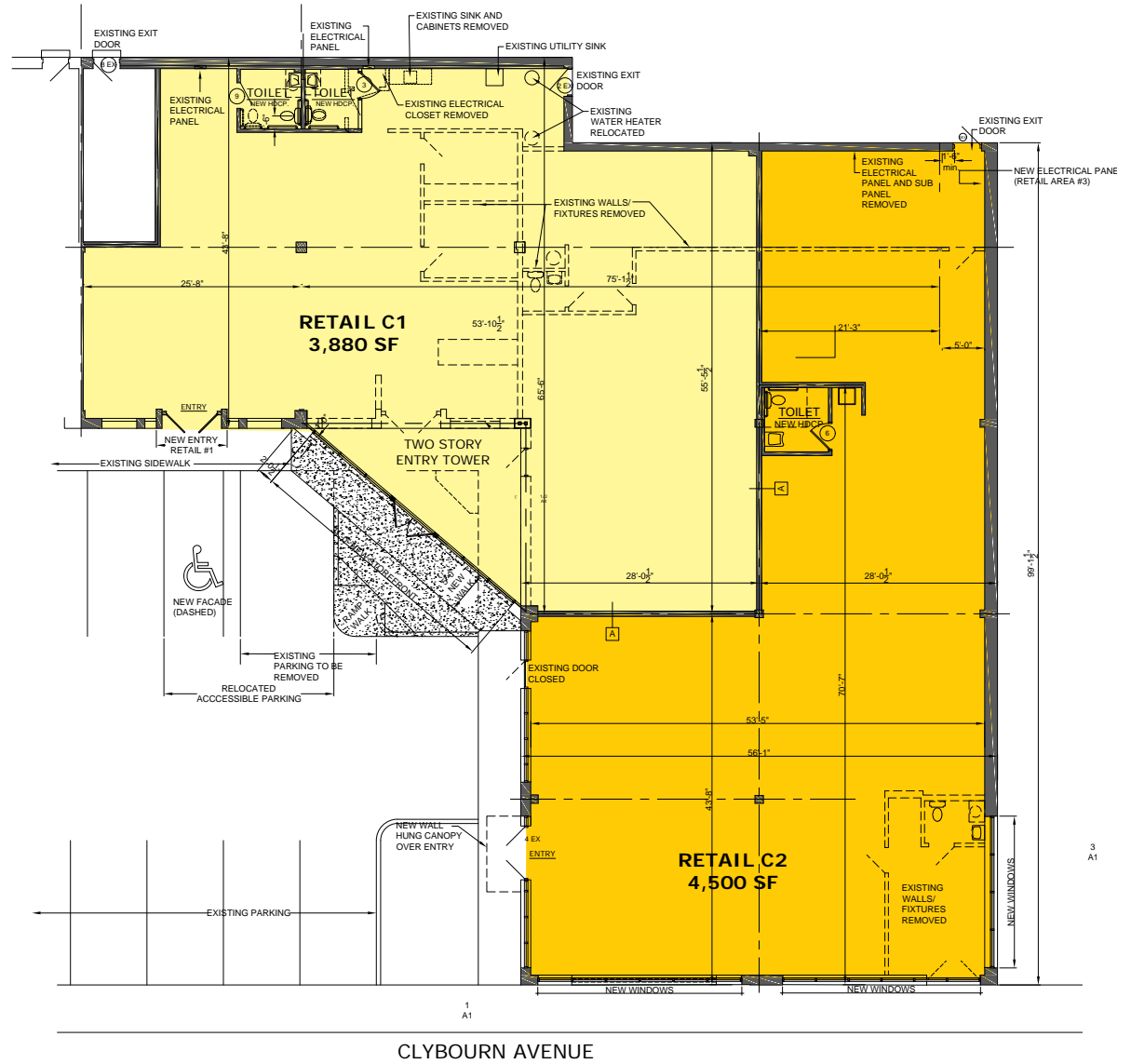
Retail C1



**4,500 sf**

Retail C2

## RETAIL C FLOOR PLAN





Retail A



Retail B



Retail C

