



218 N. Halsted Street

CHICAGO, ILLINOIS

Brand New 2nd Gen Medical Salon Available For Lease
West block of Halsted between Webster & Dickens

FOR MORE INFORMATION, PLEASE CONTACT

ANTHONY CAMPAGNI • 847.651.8669
ac@canvasrealestate.com

ELAN RASANSKY • 414.380.1555
elan@canvasrealestate.com

MICHAEL WALLACE • 614.537.2403
mwallace@canvasrealestate.com

DEMOGRAPHICS



72.7k+

Total Population
1 Mile

21.0k+ 4.09k+
0.5 Miles 0.25 Miles



\$190k+

Average HH Income
1 Mile

\$215k+ \$240k+
0.5 Miles 0.25 Miles



67.1k+

Daytime Population
1 Mile

16.6k+ 3.54k+
0.5 Miles 0.25 Miles



LINCOLN PARK

- Situated in Lincoln Park's dynamic Armitage and Halsted shopping district comprised of approximately 100,000 SF of national and local boutique retailers.
- Located less than one block from DePaul University.
- Surrounded by a dense residential market of over 65,000 people with an average annual income in excess of \$125,000 within one mile.
- Basement included for storage.

NEIGHBORING RETAILERS

Athenian Room, Bluemercury, Blue Door Farm Stand, Brown Bag Seafood, Café-ba-ba-reeba, Face Foundrie, LaserAway, Monica & Andy, Pure Barre, Specialized Bikes, Starbucks, among others.



CANVAS

FLOOR PLAN

SPACE AVAILABLE



2,200 sqft

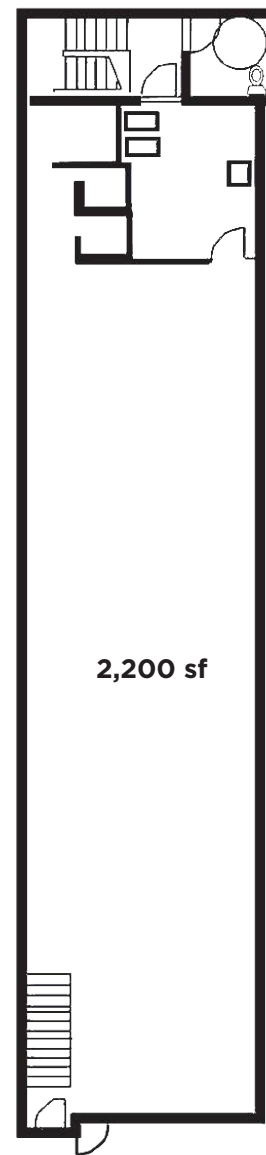
Ground Floor

FRONTAGE



22 ft

Ground Floor



2,200 sf

CANVAS

N. Halsted Street



STREET MAP

2118 N. Halsted Street
CHICAGO, ILLINOIS

SPACE AVAILABLE



FOR MORE INFORMATION,
PLEASE CONTACT

ANTHONY CAMPAGNI
ac@canvasrealestate.com
847.651.8669

ELAN RASANSKY
elan@canvasrealestate.com
414.380.1555

MICHAEL WALLACE
mwallace@canvasrealestate.com
614.537.2403

CANVAS

