



# 218 N. Halsted Street

## CHICAGO, ILLINOIS

**Brand New 2<sup>nd</sup> Gen Medical Salon Available For Lease**  
West block of Halsted between Webster & Dickens

FOR MORE INFORMATION, PLEASE CONTACT

ANTHONY CAMPAGNI • 847.651.8669  
ac@canvasrealestate.com

ELAN RASANSKY • 414.380.1555  
elan@canvasrealestate.com

MICHAEL WALLACE • 614.537.2403  
mwallace@canvasrealestate.com

## DEMOGRAPHICS



**72.7k+**

Total Population  
1 Mile

21.0k+      4.09k+  
0.5 Miles    0.25 Miles



**\$190k+**

Average HH Income  
1 Mile

\$215k+      \$240k+  
0.5 Miles    0.25 Miles



**67.1k+**

Daytime Population  
1 Mile

16.6k+      3.54k+  
0.5 Miles    0.25 Miles



## LINCOLN PARK

- Situated in Lincoln Park's dynamic Armitage and Halsted shopping district comprised of approximately 100,000 SF of national and local boutique retailers.
- Located less than one block from DePaul University.
- Surrounded by a dense residential market of over 65,000 people with an average annual income in excess of \$125,000 within one mile.
- Basement included for storage.

## NEIGHBORING RETAILERS

Athenian Room, Bluemercury, Blue Door Farm Stand, Brown Bag Seafood, Café-ba-reeba, Face Foundrie, LaserAway, Monica & Andy, Pure Barre, Specialized Bikes, Starbucks, among others.



CANVAS

# FLOOR PLAN

## SPACE AVAILABLE



**2,200** sqft

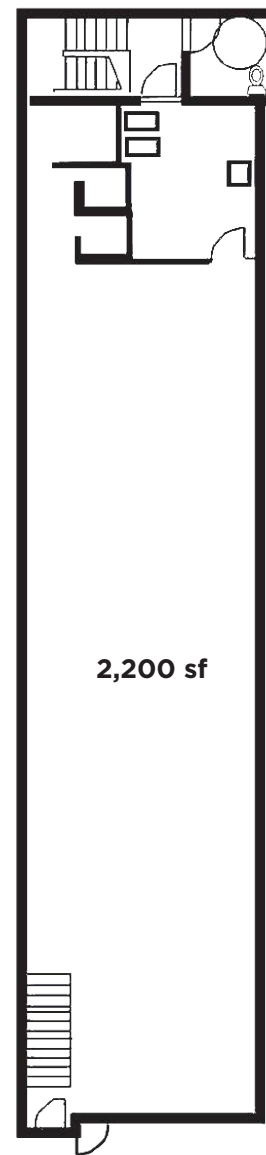
Ground Floor

## FRONTAGE



**22** ft

Ground Floor



2,200 sf

CANVAS

N. Halsted Street



# STREET MAP

2118 N. Halsted Street  
CHICAGO, ILLINOIS

SPACE AVAILABLE



FOR MORE INFORMATION,  
PLEASE CONTACT

ANTHONY CAMPAGNI  
ac@canvasrealestate.com  
847.651.8669

ELAN RASANSKY  
elan@canvasrealestate.com  
414.380.1555

MICHAEL WALLACE  
mwallace@canvasrealestate.com  
614.537.2403

CANVAS

