



INSPIRATIONAL RENDERING



1844-46 N. Damen Avenue

CHICAGO, ILLINOIS

Ground Lease or Build-to-Suit Opportunity
West block of Damen between Moffat & Churchill

FOR MORE INFORMATION, PLEASE CONTACT

ANTHONY CAMPAGNI • 847.651.8669
ac@canvasrealestate.com

ELAN RASANSKY • 414.380.1555
elan@canvasrealestate.com

QUINN THOMAS • 847.651.5589
qthomas@canvasrealestate.com

DEMOGRAPHICS



56.9k+

Total Population
1 Mile

17.4k+ 4.70k+
0.5 Miles 0.25 Miles



\$197k+

Average HH Income
1 Mile

\$220k+ \$231k+
0.5 Miles 0.25 Miles



54.6k+

Daytime Population
1 Mile

15.7k+ 4.75k+
0.5 Miles 0.25 Miles



BUCKTOWN

- Ground Lease or Build-to-Suit opportunity on a 48'x100' lot in the heart of Bucktown
- B3-2 Zoning in place allowing for a wide range of uses

NEIGHBORING RETAILERS

Bartaco, Belle Atelier, Chipotle, Club Monaco, Cult, Face Foundrie, George's Hotdogs, Juice RX, Kensington School, Le Bouchon, Lemming's Chicago, Lush, Oak + Fort, Playa Bowls, Pompette, Sarpino's Pizza, The Goddess and Grocer, The Pop Up, ZaZaZoo and many more.

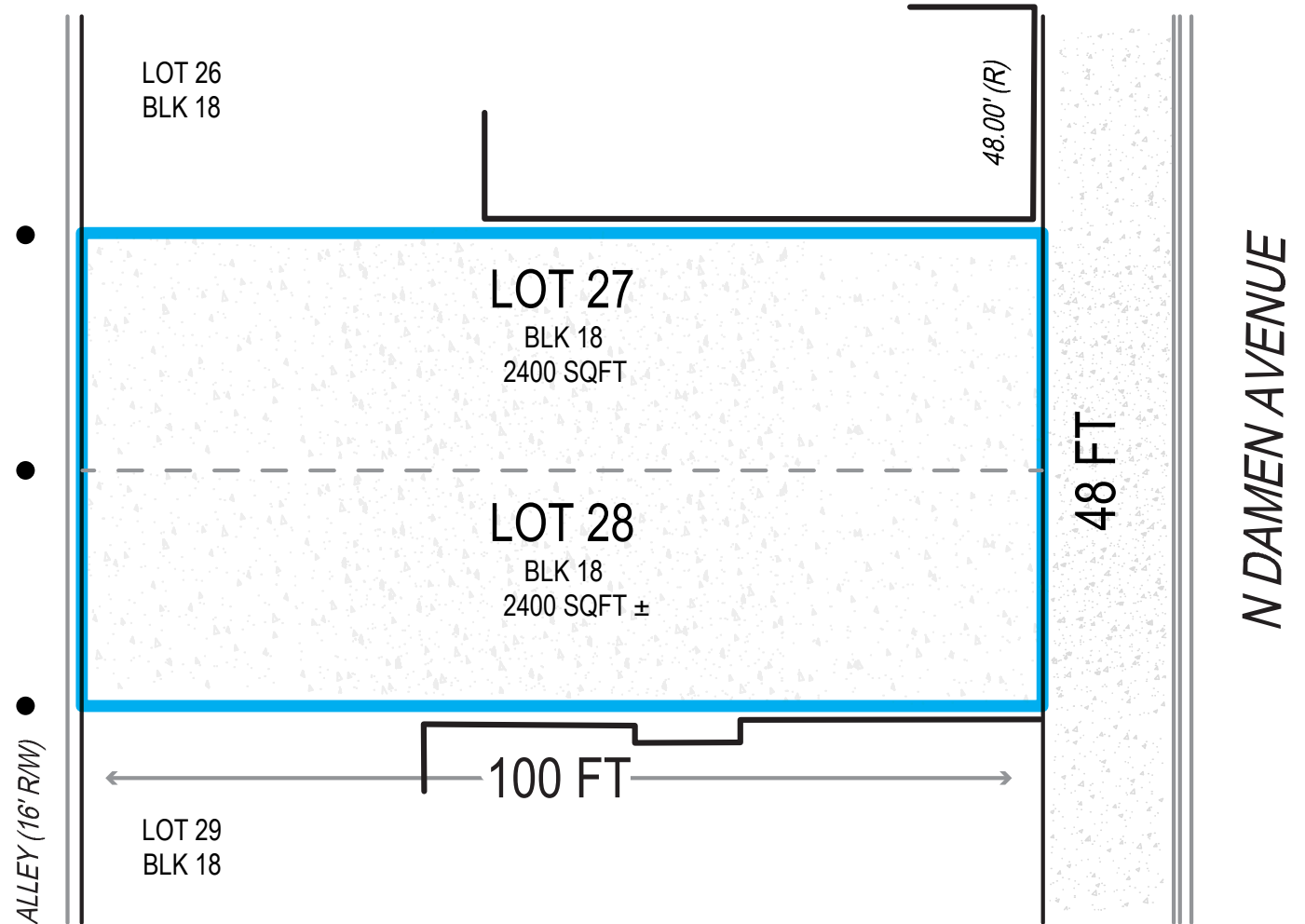
CANVAS

SITE PLAN

SPACE AVAILABLE



4,800 sqft
Total



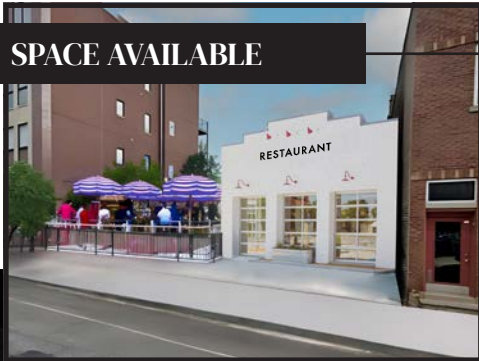
CANVAS



STREET MAP

1844-46 N. Damen Avenue
CHICAGO, ILLINOIS

SPACE AVAILABLE



FOR MORE INFORMATION,
PLEASE CONTACT

ANTHONY CAMPAGNI
ac@canvasrealestate.com
847.651.8669

ELAN RASANSKY
elan@canvasrealestate.com
414.380.1555

QUINN THOMAS
qthomas@canvasrealestate.com
847.651.5589

CANVAS

