



# 2005-07 W. Division Street CHICAGO, ILLINOIS

**Restaurant Building for Lease or Sale**  
South block of Division between Damen & Hoyne

FOR MORE INFORMATION, PLEASE CONTACT

ANTHONY CAMPAGNI • 847.651.8669  
ac@canvasrealestate.com

ELAN RASANSKY • 414.380.1555  
elan@canvasrealestate.com

QUINN THOMAS • 847.651.5589  
qthomas@canvasrealestate.com



## DEMOGRAPHICS



**72.4k+**

Total Population  
1 Mile

20.1k+      5.78k+  
0.5 Miles    0.25 Miles



**\$186k+**

Average HH Income  
1 Mile

\$205k+      \$203k+  
0.5 Miles    0.25 Miles



**57.1k+**

Daytime Population  
1 Mile

16.3k+      3.63k+  
0.5 Miles    0.25 Miles



### WICKER PARK

- Prime retail/restaurant building along West Division Street in Wicker Park's vibrant restaurant corridor
- Sidewalk cafe capabilities fronting Division St. with operable storefront windows
- Existing black iron ventilation in place
- The real estate is offered for sale or lease. The business is not included in the sale

### NEIGHBORING RETAILERS

Bourbon on Division, Casa Tequila, Cheba Hut, Colectivo Coffee, Easy Bar, Janik's, Jimmy Johns, Little Wok, Modern Dental, Phodega, Silli Kori, Sushi Taku, The Perch, Typica Café, Valhalla, Velvet Goldmine and more.

CANVAS

# FLOOR PLAN

## SPACE AVAILABLE



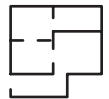
**4,008.59 sqft**  
Ground Floor



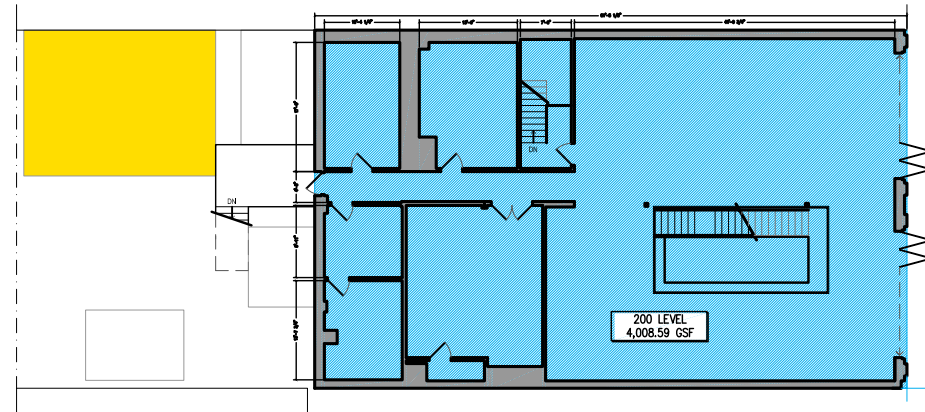
**4,008.59 sqft**  
Second Floor



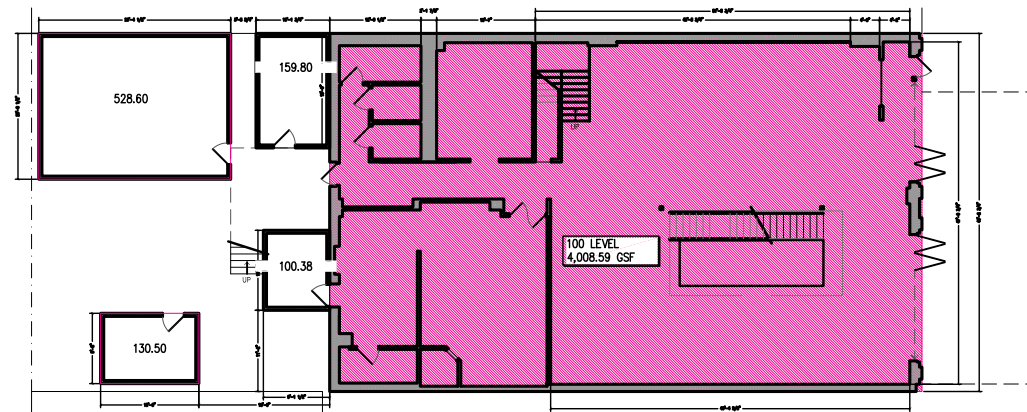
**528.60 sqft**  
Garage



**8,545.78 sqft**  
Total



GROUND FLOOR



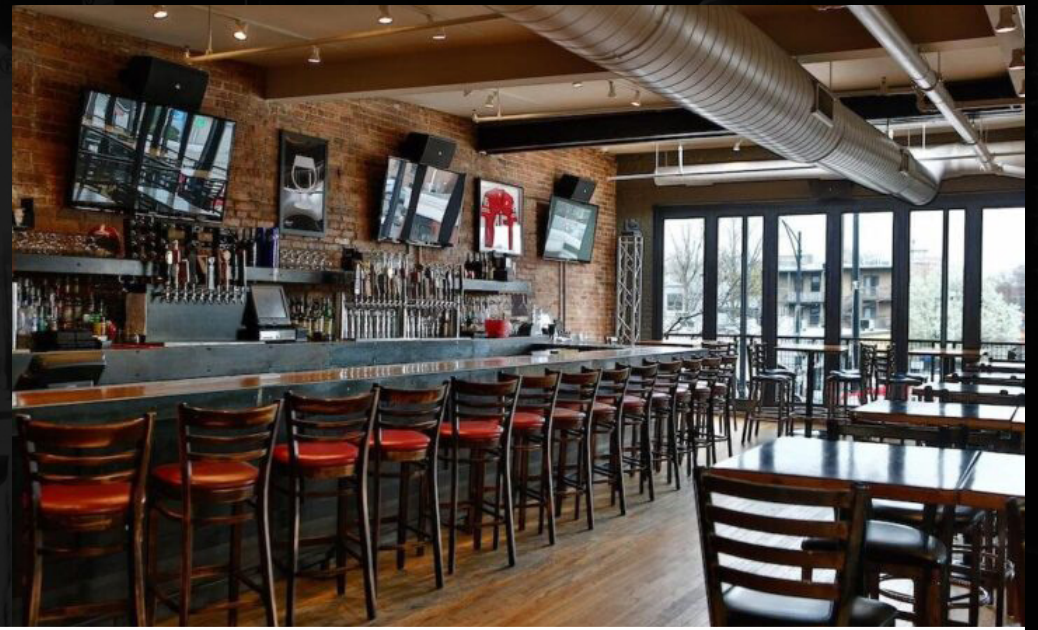
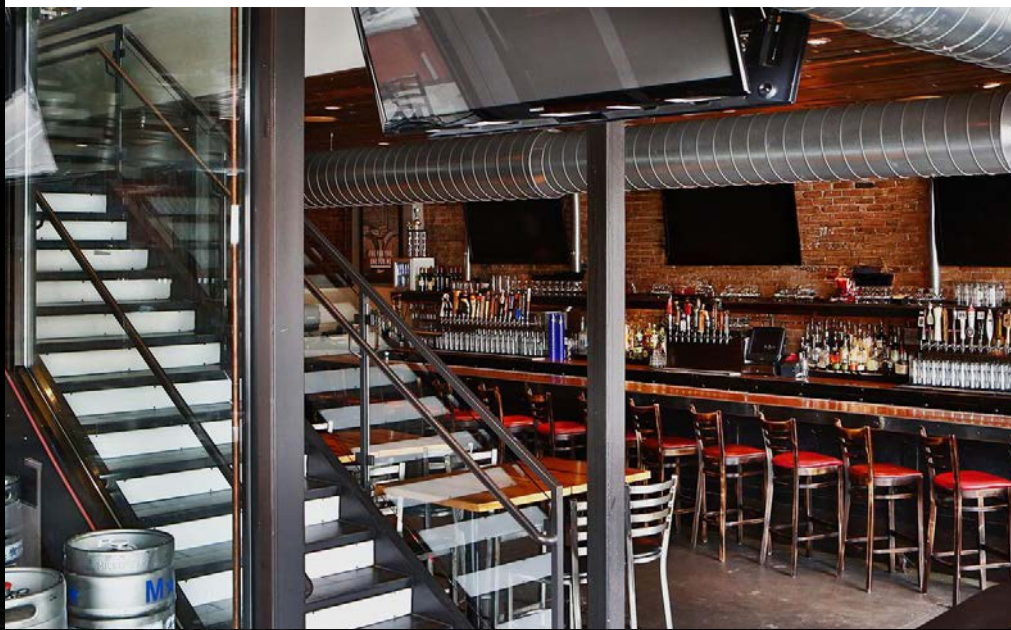
SECOND FLOOR

W. Division Street

CANVAS







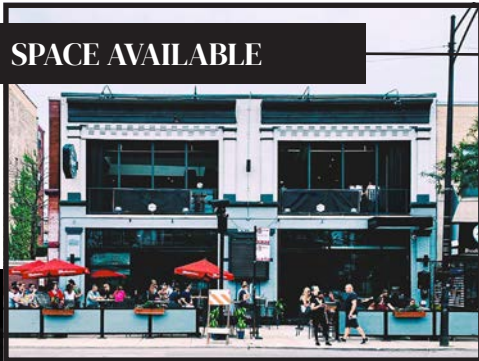
CANVAS



# STREET MAP

2005-07 W. Division Street  
CHICAGO, ILLINOIS

SPACE AVAILABLE



FOR MORE INFORMATION,  
PLEASE CONTACT

ANTHONY CAMPAGNI  
ac@canvasrealestate.com  
847.651.8669

ELAN RASANSKY  
elan@canvasrealestate.com  
414.380.1555

QUINN THOMAS  
qthomas@canvasrealestate.com  
847.651.5589

CANVAS

