

2639 N. Milwaukee Avenue

CHICAGO, ILLINOIS

Retail/Restaurant Building for Lease
Northeast corner of Milwaukee & Kedzie

FOR MORE INFORMATION, PLEASE CONTACT

ANTHONY CAMPAGNI • 847.651.8669
ac@canvasrealestate.com

ELAN RASANSKY • 414.380.1555
elan@canvasrealestate.com

MICHAEL WALLACE • 614.537.2403
mwallace@canvasrealestate.com

DEMOGRAPHICS



530k+

Total Population
3 Miles

229k+ 38.3k+
2 Miles 1 Mile



\$147k+

Average HH Income
3 Miles

\$139k+ \$127k+
2 Miles 1 Mile



407k+

Daytime Population
3 Miles

169k+ 43.4k+
2 Miles 1 Mile

LOGAN SQUARE

- Rare opportunity to occupy a large, single tenant building on a corner
- Located at the signalized intersection of Milwaukee and Kedzie
- Directly across from the newly renovated (\$25+ million) Logan Square CTA Blue Line Station (2 million annual riders)
- Newly widened sidewalks and curb extensions along Milwaukee Ave allow for outdoor dining

NEIGHBORING RETAILERS

Chicago Athletic Club (coming soon) Club Pilates, Daisies, The Logan Theatre, Longman & Eagle, Lula Cafe, McDonald's, Modern Dental Chicago, Pedestrian Coffee, Sploot Veterinary Care, sweetgreen, Target, Tropical Smoothie Cafe (coming soon)



SITE SURVEY

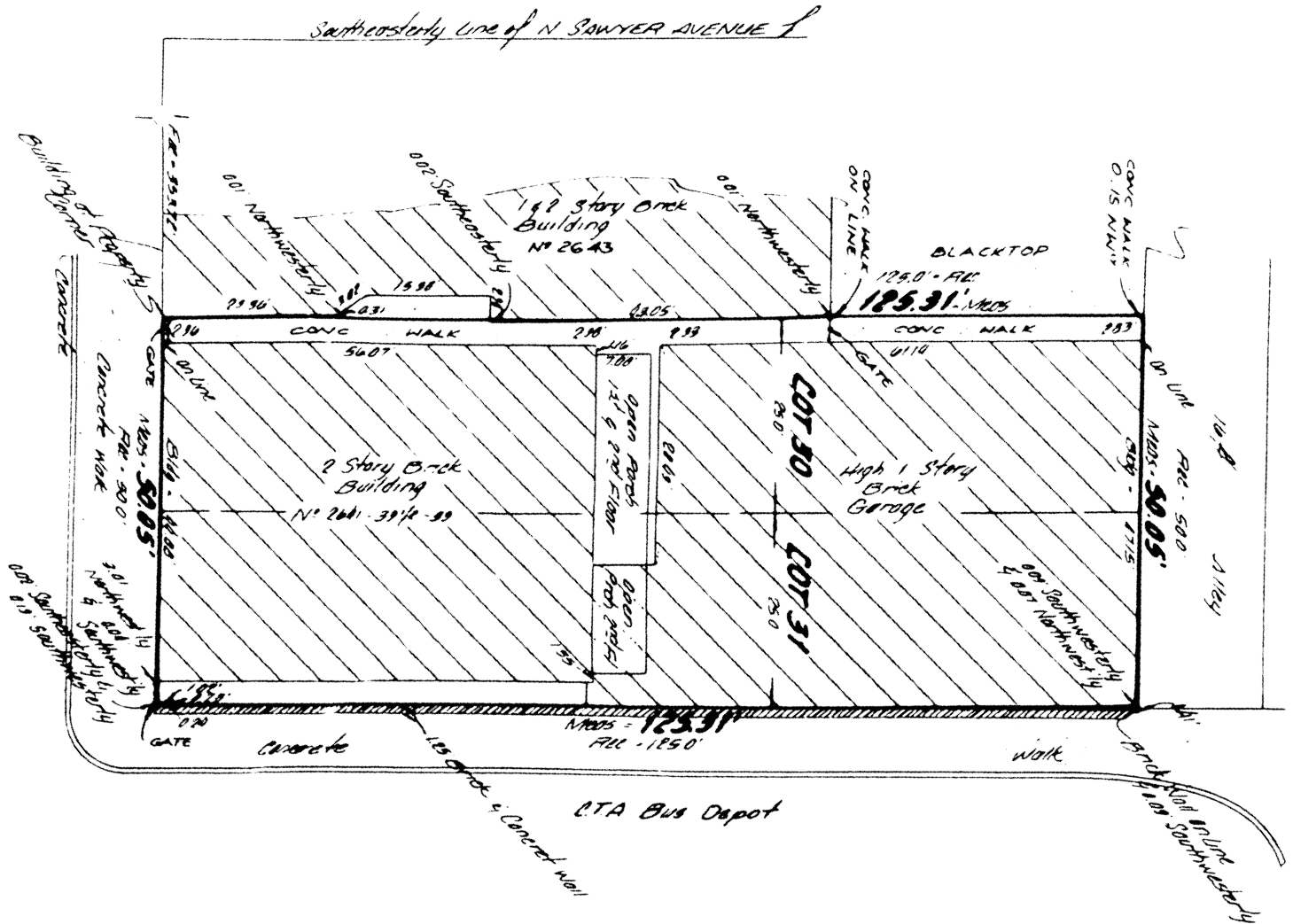
SPACE AVAILABLE



6,250^{sf}

Total

N. MILWAUKEE AVENUE



N. KEDZIE AVENUE

CANVAS





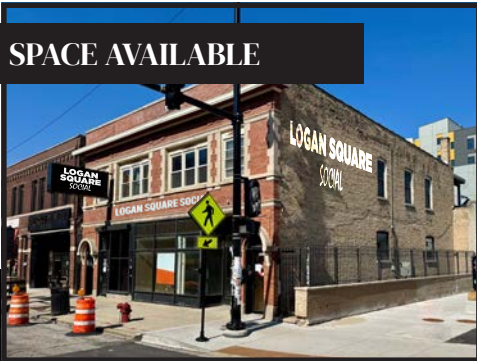
LOGAN SQUARE STATION REMODEL

CANVAS

STREET MAP

2639 N. Milwaukee Avenue
CHICAGO, ILLINOIS

SPACE AVAILABLE



FOR MORE INFORMATION,
PLEASE CONTACT

ANTHONY CAMPAGNI
ac@canvasrealestate.com
847.651.8669

ELAN RASANSKY
elan@canvasrealestate.com
414.380.1555

MICHAEL WALLACE
mwallace@canvasrealestate.com
614.537.2403

CANVAS

