



2659 N. Milwaukee Avenue

CHICAGO, ILLINOIS

Multi-use Building for Lease
North block of Milwaukee between Sawyer & Kedzie

FOR MORE INFORMATION, PLEASE CONTACT

ANTHONY CAMPAGNI • 847.651.8669
ac@canvasrealestate.com

ELAN RASANSKY • 414.380.1555
elan@canvasrealestate.com

MICHAEL WALLACE • 614.537.2403
mwallace@canvasrealestate.com

DEMOGRAPHICS



530k+

Total Population
3 Miles

229k+ 38.3k+
2 Miles 1 Mile



\$147k+

Average HH Income
3 Miles

\$139k+ \$127k+
2 Miles 1 Mile



407k+

Daytime Population
3 Miles

169k+ 43.4k+
2 Miles 1 Mile



LOGAN SQUARE

- Rare opportunity to occupy a large, single tenant building
- Majority of first floor has 15' high ceilings
- Newly widened sidewalks and curb extensions along Milwaukee Ave allow for outdoor dining

NEIGHBORING RETAILERS

Chicago Athletic Club (coming soon) Club Pilates, Daisies, The Logan Theatre, Longman & Eagle, Lula Cafe, McDonald's, Modern Dental Chicago, Pedestrian Coffee, Sploot Veterinary Care, sweetgreen, Target, Tropical Smoothie Cafe (coming soon)

CANVAS

SITE SURVEY

SPACE AVAILABLE



6,250 sf
Ground Floor

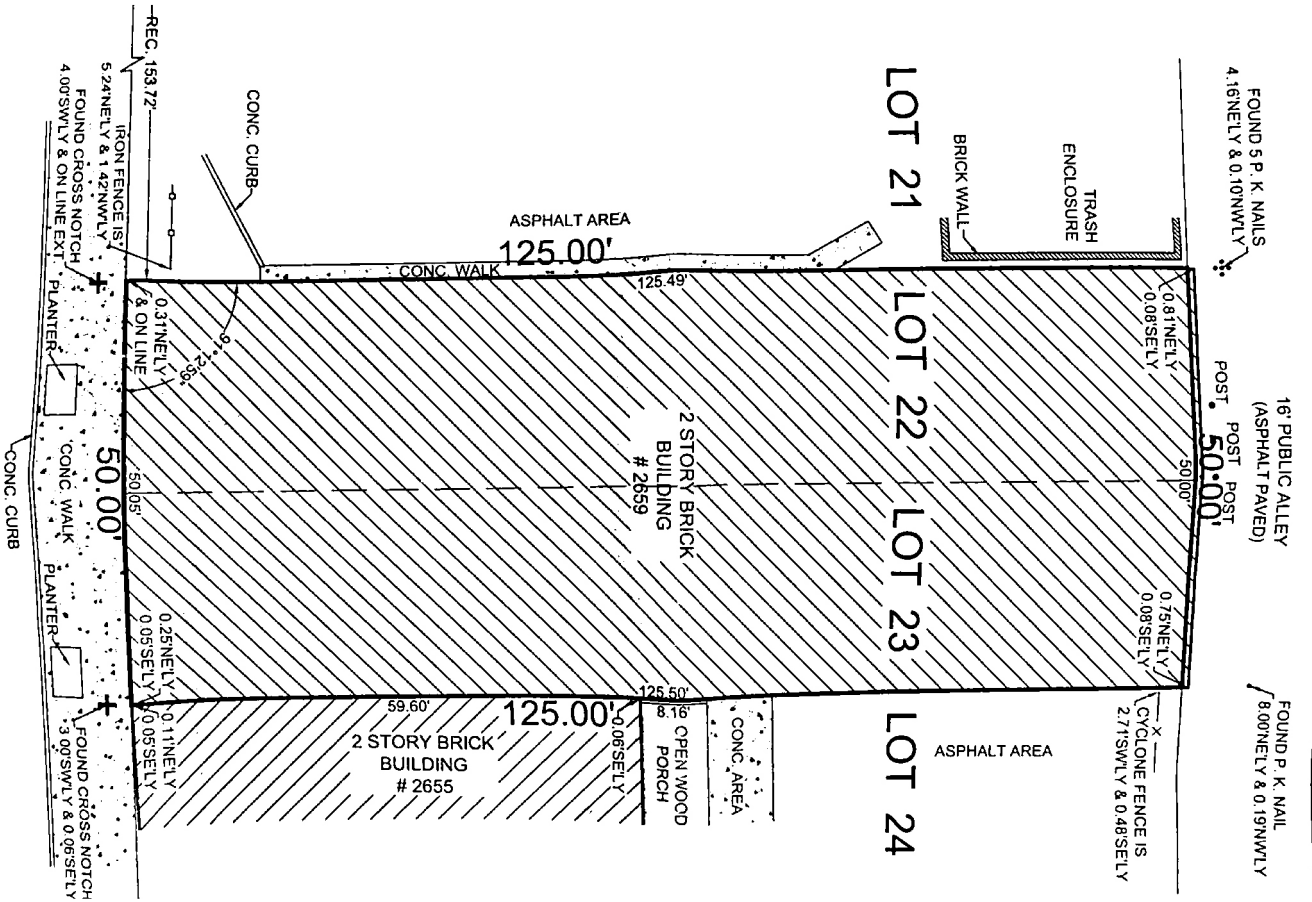


3,000 sf
Mezzanine



9,250 sf
Total

N. MILWAUKEE AVENUE



CANVAS



STREET MAP

2659 N. Milwaukee Avenue
CHICAGO, ILLINOIS

SPACE AVAILABLE



FOR MORE INFORMATION,
PLEASE CONTACT

ANTHONY CAMPAGNI
ac@canvasrealestate.com
847.651.8669

ELAN RASANSKY
elan@canvasrealestate.com
414.380.1555

MICHAEL WALLACE
mwallace@canvasrealestate.com
614.537.2403

CANVAS

